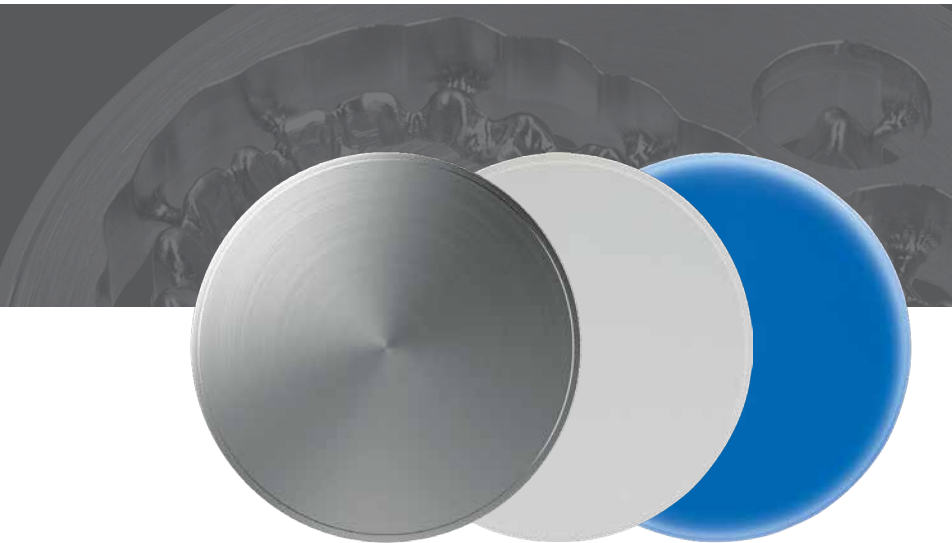


CAD/CAM materials.



DENTAURUM
**ONLINE
SHOP**
shop.dentaurum.com



Premium quality for every requirement.

remanium®
star MD I + II

rematitan®
Ti2+Ti5

STAR *WAX*

High-tech CoCr bonding alloy for CAD/CAM milling systems.

remanium® star MD I: Using specific metallurgical processes, a fine-grained, homogeneous microstructure can be produced.

In addition to improving the mechanical properties, the hot isostatic pressing process also guarantees that no porosity or contraction cavities occur.

Optimized standard version in implant quality.

A distinguishing feature of remanium® star MD II is its homogeneous composition which guarantees very high strength (type 4) and high ductility. Good laser weldability and proven excellent ceramic bonding are further properties which provide the basis for the high degree of safety potential.

Titanium of low hardness.

Pure titanium blank for all applications in crown and bridge work. Highly biocompatible and gentle on the tools during milling.

For high demands.

Titanium alloy (Ti 6AL 4V) with increased mechanical hardness. Particularly suitable for long-span, delicate framework structures and for implant work.

Wax milling made easy.

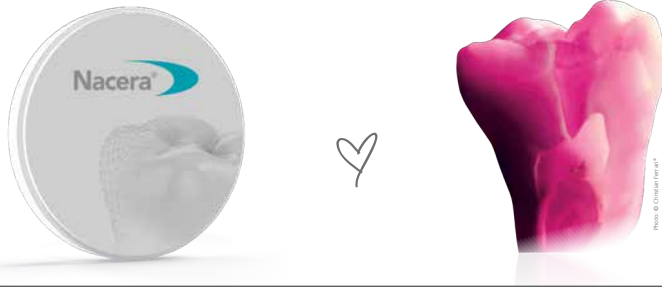
Wax blanks with excellent milling properties for the manufacture of crowns and bridges or cast partial dentures using the CAD/Vest process. Can be processed on all milling machines suitable for milling blanks with standard dimensions.

StarWax Blank grey is ideal for CAD/Vest crowns and bridges to be pressed or cast.

StarWax Blank blue is ideal for CAD/Vest cast partial dentures to be cast.



ceraMotion® One Touch Concept.



The ceraMotion® One Touch Concept combines two strong brands – Nacera® and ceraMotion®.

Nacera®* and ceraMotion® – two strong brands combined to form a unique product range for all indications and processing techniques for the manufacture of all-ceramic restorations made of zirconium oxide. They are individually tailored to the needs and requirements of the user.



Be it opaque, highly translucent, ultra-highly translucent or single- or multi-layered – Nacera®, a high-performance ceramics made of zirconium oxide, is available for many indications. The high-quality and extremely precise milling blanks are manufactured in Germany. They can be used to create sophisticated, natural dental restorations.



ceraMotion® Zr veneering ceramics unite the highest demands on aesthetics with the most modern materials technology within a logical system. The resulting products are developed and produced in our own company. The One Touch Concept combines two strong brands – Nacera® and ceraMotion®.

* Nacera® is a registered trademark of Doceram Medical Ceramics GmbH, Germany.

Zirconium oxide. Shade stability. Aesthetics.

- White zirconium oxide, semi-translucent and highly translucent.
- Highly translucent colored zirconium oxide in the 16 V-classic shades (A1–D4 + 2 bleach colors).
- Multi-layered and highly translucent zirconium oxide in 4 basic colors (A–D) Light & Dark.
- Multi-layered and ultra-highly translucent zirconium oxide in 3 basic colors (A–C) Light & Dark.
- Veneering porcelain concept for build-up / cut back / staining and minimal stratification technique.
- Unique 2D and 3D pastes for a quick, aesthetic finish to fully-anatomical restorations.
- Coloring liquids in the classic V-shades (A1–D4) and shade modifiers for the dipping and brush technique.
- Nacera® Blue X liquid to increase translucency in highly translucent zirconium oxide.



CoCr blanks



remanium® star MD I milling blank

ø 98.4 mm

Proven high-tech CoCr bonding alloy for CAD/CAM milling systems.

Powder metallurgical manufacture with extremely homogeneous structure.

Advantages:

- proven remanium® star composition
- certified and time-tested base material for all applications in crown and bridge work
- hot isostatically compressed, 100 % free of porosity and contraction cavities
- fine-grained microstructure of the milling discs
- homogeneous structure of the material facilitates uniform, easy machinability on the respective milling machine
- maximum strength Type 5, DIN EN ISO 22674
- ideal for ceramic veneering using the conventional CTE range
- excellent laser weldability

Indication: for all constructions manufactured using milling technique such as crowns, bridges, supra-structures, ceramic bonding with suitable ceramics

Norm: DIN EN ISO 9693, DIN EN ISO 22674

Thickness	Border	REF	Quantity
8 mm	without	102-650-00	1 piece
10 mm	without	102-651-00	1 piece
12 mm	10 mm	102-652-00	1 piece
13.5 mm	10 mm	102-653-00	1 piece
15 mm	10 mm	102-654-00	1 piece



Special sizes for remanium® star MD I:
Special sizes with a thickness of up to 25 mm and a minimum purchase quantity of 50 blanks are available on request.
Please note the extended delivery time: 8–10 weeks.

remanium® star is also processed as SLM powder for the laser-melting technique by leading suppliers.
Information is available on request!

Technical data

0.2% Yield strength $R_{p0.2}$	635 MPa
Tensile strength R_m	1120 MPa
Hardness	330 HV 10
Elongation A_5	10.2 %
Modulus of elasticity E	230 GPa
Density	8.6 g/cm ³
CTE 25–500 °C / 77–932 °F	14.1 x 10 ⁻⁶ K ⁻¹
Solidus temperature	1320 °C / 2408 °F
Liquidus temperature	1420 °C / 2588 °F

Composition (percentage by mass)

Co	Cr	W	Si
60.5	28.0	9.0	1.5

Additional elements < 1 %: Fe, Mn, N, Nb



remanium® star MD II milling blank

∅ 98.4 mm

Proven CoCr bonding alloy for CAD/CAM milling systems. Optimized casting structure in implant quality.

Advantages:

- proven remanium® star composition
- certified and time-tested base material for all applications in crown and bridge work
- very high ductility
- very high strength Type 4, DIN EN ISO 22674
- ideal for ceramic veneering using the conventional CTE range
- excellent laser weldability

Indication: for all constructions manufactured using milling technique such as crowns, bridges, supra-structures, ceramic bonding with suitable ceramics

Norm: DIN EN ISO 22674, Type 4



Thickness	Border	REF	Quantity
8 mm	without	102-750-01	1 piece
10 mm	without	102-751-01	1 piece
12 mm	10 mm	102-752-01	1 piece
13.5 mm	10 mm	102-753-01	1 piece
15 mm	10 mm	102-754-01	1 piece
18 mm	10 mm	102-755-01	1 piece
20 mm	10 mm	102-756-01	1 piece
25 mm	10 mm	102-757-01	1 piece

CE 0483

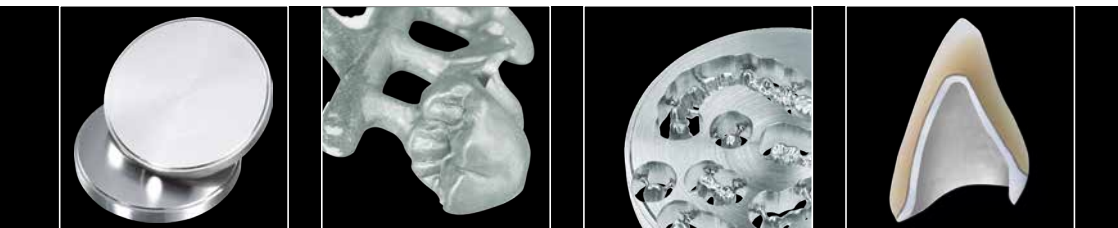
Technical data

0.2% Yield strength $R_{p0.2}$	364 MPa
Tensile strength R_m	506 MPa
Hardness	281 HV 10
Elongation A_5	5.9 %
Modulus of elasticity E	202 GPa
Density	8.5 g/cm ³
CTE 25–500 °C / 77–932 °F	14.1 x 10 ⁻⁶ K ⁻¹
Solidus temperature	1320 °C / 2408 °F
Liquidus temperature	1420 °C / 2588 °F

Composition (percentage by mass)

Co	Cr	W	Si
60.5	28.0	9.0	1.5

Additional elements < 1 %: Fe, Mn, N, Nb



Titanium blanks



rematitan® blank Ti2

Titanium grade 2

Norm: DIN EN ISO 9693, DIN EN ISO 22674, ISO 5832-2

Pure titanium blank for all applications in crown and bridge work.

Highly biocompatible and gentle on the tools during milling.

Product advantages:

- High level of biocompatibility.
- Ideal for ceramic veneering using bonding ceramics suitable for titanium such as ceraMotion® Ti
- High degree of corrosion resistance
- Good milling properties due to low hardness

Indication: for all constructions manufactured using milling technique such as crowns, bridges, supra-structures, ceramic bonding with suitable ceramics

Thickness	Border	REF	Quantity
10 mm	without	100-202-10	1 piece
12 mm	10 mm	100-202-12	1 piece
15 mm	10 mm	100-202-15	1 piece
20 mm	10 mm	100-202-20	1 piece

CE⁰⁴⁸³

Technical data

0.2% Yield strength $R_{p0.2}$	360 MPa
Tensile strength R_m	505 MPa
Hardness	225 HV 10
Modulus of elasticity E	103 GPa
Density	4.5 g/cm ³
Melting point	1.665 °C
CTE 25–500 °C / 77–932 °F	9.6 x 10 ⁻⁶ K ⁻¹



NEW

rematitan® blank Ti5

Titanium grade 5

Norm: DIN EN ISO 9693, DIN EN ISO 22674, ISO 5832-3

Titanium alloy (Ti Al6 V4) with increased mechanical hardness. Particularly suitable for long-span, delicate framework structures and for implant work.

Product advantages:

- High mechanical strength
- High level of biocompatibility in implant quality
- Ideal for ceramic veneering using bonding ceramics suitable for titanium such as ceraMotion® Ti
- High degree of corrosion resistance

Indication: implant supported supra-structures, for all constructions manufactured using milling technique such as crowns, bridges, supra-structures, ceramic bonding with suitable ceramics



Thickness	Border	REF	Quantity
10 mm	without	100-205-10	1 piece
12 mm	10 mm	100-205-12	1 piece
15 mm	10 mm	100-205-15	1 piece
20 mm	10 mm	100-205-20	1 piece

CE 0483

Technical data

0.2% Yield strength $R_{p0.2}$	832 MPa
Tensile strength R_m	908 MPa
Hardness	285 HV 10
Modulus of elasticity E	105 GPa
Density	4.3 g/cm ³
CTE 25–500 °C / 77–932 °F	10.0 x 10 ⁻⁶ K ⁻¹

**NEW**

DENTAURUM
**ONLINE
SHOP**
shop.dentaurum.com



Wax blanks



StarWax Blank blue

ø 98.4 mm

StarWax Blank blue is ideal for CAD/Vest cast partial dentures to be cast.

Product advantages:

- Tension-free
- High fracture strength
- Accurate fit

Indication: wax-ups in crown and bridge technique, stabilizing of wax constructions

Thickness	Border	Color	REF	Quantity
25.0 mm	10 mm	blue	120-235-00	1 piece

Technical data

Dropping point	100-130 °C / 212-266 °F
Density	0.92-0.97 g/cm ³

NEW



StarWax Blank grey

ø 98.4 mm

StarWax Blank grey is ideal for CAD/Vest crowns and bridges to be pressed or cast.

Product advantages:

- Residue-free burnout
- High edge strength
- Slightly elastic

Indication: wax-ups in crown and bridge technique, stabilizing of wax constructions

Thickness	Border	Color	REF	Quantity
20.0 mm	10 mm	grey	120-230-00	1 piece

Technical data

Dropping point	100-130 °C / 212-266 °F
Density	0.92-0.97 g/cm ³

NEW

Nacera® Pearl Q³ Multi-Shade MS

ø 98.3 mm

Polychromatic, ultra-high translucent zirconium oxide.

Advantages & indication:

- Revolutionary match of the Vita* shades and lifelike smooth color transitions
- Make monolithic crowns and bridges up to 3 units, veneers, inlays, onlays
- Finish in one bake, e.g. with ceraMotion® One Touch
- Ergonomic system to achieve the most common shades
- Extremely high-precision fitting thanks to Instant Fit Process (I.F.P.)



Color	REF (16 mm)	REF (20 mm)	Quantity
MS-A-Light	270-060-16	270-060-20	1 piece
MS-A-Dark	270-070-16	270-070-20	1 piece
MS-B-Light	270-061-16	270-061-20	1 piece
MS-B-Dark	270-071-16	270-071-20	1 piece
MS-C-Light	270-062-16	270-062-20	1 piece
MS-C-Dark	270-072-16	270-072-20	1 piece

CE 0481

*Vita is a registered trademark of Vita Zahnfabrik H. Rauter GmbH & Co.KG, 79704 Bad Säckingen, Germany.

Hardness	1300 HV 0.5
Material	ZrO ₂ 3Y-TZP
Thermal conductivity	2 W/mK
Bending strength	1400 MPa
Density	> 6.04 g/cm ³
Radioactivity	< 0.02 Bq/g
Impact resistance	8 MPa m ^{1/2}
Medium grain size	< 0.4 µm
Solubility	< 10 µg/cm ²
CTE	10 x 10 ⁻⁶ K ⁻¹
Compression resistance	3000 MPa

NEW

Zirconium oxide blanks



Nacera® Pearl Multi-Shade MS

ø 98,3 mm

Nacera® Pearl Multi-Shade blanks in zirconium oxide.

Advantages & indications:

- highly translucent multi-layered system with a natural look
- natural and smooth shade transitions from cervical to incisal
- extremely efficient – one blank covers several shades
- quick and economical for natural-looking monolithic restorations
- excellent machinability without fracturing or chipping
- extremely high-precision fitting thanks to Instant Fit Process (I.F.P.)

NEW

Color	REF (14 mm)	REF (18 mm)	REF (22 mm)	Quantity
MS-A	270-050-14	270-050-18	270-050-22	1 piece
MS-B	270-051-14	270-051-18	270-051-22	1 piece
MS-C	270-052-14	270-052-18	270-052-22	1 piece
MS-D	270-053-14	270-053-18	270-053-22	1 piece
MS-A-Light	270-084-14	270-084-18	270-084-22	1 piece
MS-A-Dark	270-054-14	270-054-18	270-054-22	1 piece
MS-B-Light	270-085-14	270-085-18	270-085-22	1 piece
MS-B-Dark	270-055-14	270-055-18	270-055-22	1 piece
MS-C-Light	270-086-14	270-086-18	270-086-22	1 piece
MS-C-Dark	270-056-14	270-056-18	270-056-22	1 piece
MS-D-Light	270-087-14	270-087-18	270-087-22	1 piece
MS-D-Dark	270-057-14	270-057-18	270-057-22	1 piece

CE⁰⁴⁸¹

Technical data

Hardness	1300 HV 0.5
Material	ZrO ₂ 3Y-TZP
Thermal conductivity	2 W/mK
Bending strength	1400 MPa
Density	> 6.04 g/cm ³
Radioactivity	< 0.02 Bq/g
Impact resistance	8 MPa m ^{1/2}
Medium grain size	< 0.4 µm
Solubility	< 10 µg/cm ²
CTE	10 x 10 ⁻⁶ K ⁻¹
Compression resistance	3000 MPa

Nacera® Pearl Shaded 16+2

ø 98.3 mm

Colored, highly translucent zirconium oxide in 16 V-Classic colors and two bleach colors.

Advantages & indications:

- for multiple indications – highly stable while highly translucent, meeting all demands
- shade and process stability thanks to homogeneous coloring, ensuring consistent color results
- economic solution, as the dipping process and the use of coloring liquids are no longer necessary
- excellent machinability without fracturing or chipping
- delivers flawless monolithic restorations with a natural aesthetic
- extremely high-precision fitting thanks to Instant Fit Process (I.F.P.)



Color	REF (12 mm)	REF (14 mm)	REF (16 mm)	REF (18 mm)	REF (20 mm)	REF (25 mm)	Quantity
OM2	270-009-12	270-009-14	270-009-16	270-009-18	270-009-20	270-009-25	1 piece
OM3	270-010-12	270-010-14	270-010-16	270-010-18	270-010-20	270-010-25	1 piece
A1	270-011-12	270-011-14	270-011-16	270-011-18	270-011-20	270-011-25	1 piece
A2	270-012-12	270-012-14	270-012-16	270-012-18	270-012-20	270-012-25	1 piece
A3	270-013-12	270-013-14	270-013-16	270-013-18	270-013-20	270-013-25	1 piece
A3,5	270-014-12	270-014-14	270-014-16	270-014-18	270-014-20	270-014-25	1 piece
A4	270-015-12	270-015-14	270-015-16	270-015-18	270-015-20	270-015-25	1 piece
B1	270-021-12	270-021-14	270-021-16	270-021-18	270-021-20	270-021-25	1 piece
B2	270-022-12	270-022-14	270-022-16	270-022-18	270-022-20	270-022-25	1 piece
B3	270-023-12	270-023-14	270-023-16	270-023-18	270-023-20	270-023-25	1 piece
B4	270-024-12	270-024-14	270-024-16	270-024-18	270-024-20	270-024-25	1 piece
C1	270-031-12	270-031-14	270-031-16	270-031-18	270-031-20	270-031-25	1 piece
C2	270-032-12	270-032-14	270-032-16	270-032-18	270-032-20	270-032-25	1 piece
C3	270-033-12	270-033-14	270-033-16	270-033-18	270-033-20	270-033-25	1 piece
C4	270-034-12	270-034-14	270-034-16	270-034-18	270-034-20	270-034-25	1 piece
D2	270-042-12	270-042-14	270-042-16	270-042-18	270-042-20	270-042-25	1 piece
D3	270-043-12	270-043-14	270-043-16	270-043-18	270-043-20	270-043-25	1 piece
D4	270-044-12	270-044-14	270-044-16	270-044-18	270-044-20	270-044-25	1 piece

CE 0481

Technical data

Hardness	1300 HV 0.5
Material	ZrO ₂ 3Y-TZP
Thermal conductivity	2 W/mK
Bending strength	1400 MPa
Density	> 6.04 g/cm ³
Radioactivity	< 0.02 Bq/g
Impact resistance	8 MPa m ^{1/2}
Medium grain size	< 0.4 µm
Solubility	< 10 µg/cm ²
CTE	10 x 10 ⁻⁶ K ⁻¹
Compression resistance	3000 MPa

Zirconium oxide blanks



Nacera® Pearl white

ø 98.3 mm

White, highly translucent zirconium oxide.

Advantages and indications:

- for multiple indications – from veneers to wide span bridges supported by implants
- highly translucent and extremely stable: flexural strength 1400 MPa, hardness 1300 HV
- natural translucency for aesthetic monolithic restorations
- flexible sintering temperature 1450 °C - 1550 °C / 2642 °F - 2822 °F
- extremely high-precision fitting thanks to Instant Fit Process (I.F.P.)

Also available in semi-translucent (Nacera® Shell white).

Thickness	Color	REF	Quantity
10 mm	White, highly translucent	270-001-10	1 piece
12 mm	White, highly translucent	270-001-12	1 piece
14 mm	White, highly translucent	270-001-14	1 piece
16 mm	White, highly translucent	270-001-16	1 piece
18 mm	White, highly translucent	270-001-18	1 piece
20 mm	White, highly translucent	270-001-20	1 piece
25 mm	White, highly translucent	270-001-25	1 piece

CE 0481

Technical data

Hardness	1300 HV 0.5
Material	ZrO ₂ 3Y-TZP
Thermal conductivity	2 W/mK
Bending strength	1400 MPa
Density	> 6.04 g/cm ³
Radioactivity	< 0.02 Bq/g
Impact resistance	8 MPa m ^{1/2}
Medium grain size	< 0.4 µm
Solubility	< 10 µg/cm ²
CTE	10 x 10 ⁻⁶ K ⁻¹
Compression resistance	3000 MPa

Nacera® Shell white

ø 98.3 mm

White, semi-translucent zirconium oxide.

Advantages and indications:

- excellent cover of discolored stumps and metal abutments
 - extremely high-precision fitting thanks to Instant Fit Process (I.F.P.)
- Also available in highly translucent (Nacera® Pearl white).



Thickness	Color	REF	Quantity
10 mm	White, opaque	270-002-10	1 piece
12 mm	White, opaque	270-002-12	1 piece
14 mm	White, opaque	270-002-14	1 piece
16 mm	White, opaque	270-002-16	1 piece
18 mm	White, opaque	270-002-18	1 piece
20 mm	White, opaque	270-002-20	1 piece
25 mm	White, opaque	270-002-25	1 piece

CE 0481

Technical data

Hardness	1300 HV 0.5
Material	ZrO ₂ 3Y-TZP
Thermal conductivity	2 W/mK
Bending strength	1400 MPa
Density	> 6.04 g/cm ³
Radioactivity	< 0.02 Bq/g
Impact resistance	8 MPa m ^{1/2}
Medium grain size	< 0.4 µm
Solubility	< 10 µg/cm ²
CTE	10 x 10 ⁻⁶ K ⁻¹
Compression resistance	3000 MPa

Zirconium oxide / Coloring liquids



Nacera® Classic Liquids Set

Coloring liquids for perfect, natural results.
Set with 16 body colors and 8 different shade modifiers
incl. chronometer, funnel, tweezers and brush.

REF 271-100-00	1 set
CE 0481	Contents:
1 x CL Body A1	REF 271-011-50
1 x CL Body A2	REF 271-012-50
1 x CL Body A3	REF 271-013-50
1 x CL Body A 3.5	REF 271-014-50
1 x CL Body A4	REF 271-015-50
1 x CL Body B1	REF 271-021-50
1 x CL Body B2	REF 271-022-50
1 x CL Body B3	REF 271-023-50
1 x CL Body B4	REF 271-024-50
1 x CL Body C1	REF 271-031-50
1 x CL Body C2	REF 271-032-50
1 x CL Body C3	REF 271-033-50
1 x CL Body C4	REF 271-034-50
1 x CL Body D2	REF 271-042-50
1 x CL Body D3	REF 271-043-50
1 x CL Body D4	REF 271-044-50
1 x CL Body Diluting	REF 271-050-50
1 x CL Enamel I	REF 271-051-20
1 x CL Enamel II	REF 271-052-20
1 x CL Effect Blue	REF 271-061-20
1 x CL Effect Brown	REF 271-071-20
1 x CL Effect Grey	REF 271-065-20
1 x CL Effect Orange	REF 271-075-20
1 x CL Balancer	REF 271-074-20
1 x Chrono	REF 271-105-00
1 x Tweezer	REF 271-107-00
1 x Funnel	REF 271-104-00
1 x Brush I, Kolinsky-M	REF 271-101-00

Nacera® Classic Liquids

Nacera® Classic Liquids can either be applied directly using a brush, or by dipping. A combination of the two is also possible using shade modifiers in the incisal area. It is also possible to individualize pre-dyed zirconium oxide.

Nacera® Classic Liquids were developed especially for Nacera® Pearl zirconium oxide in order to achieve maximum shading reliability, highest aesthetics and efficiency.



Abbreviation	REF	Quantity	REF	Quantity
CL Body A1	271-011-50	50 ml		
CL Body A2	271-012-50	50 ml		
CL Body A3	271-013-50	50 ml		
CL Body A3,5	271-014-50	50 ml		
CL Body A4	271-015-50	50 ml		
CL Body B1	271-021-50	50 ml		
CL Body B2	271-022-50	50 ml		
CL Body B3	271-023-50	50 ml		
CL Body B4	271-024-50	50 ml		
CL Body C1	271-031-50	50 ml		
CL Body C2	271-032-50	50 ml		
CL Body C3	271-033-50	50 ml		
CL Body C4	271-034-50	50 ml		
CL Body D2	271-042-50	50 ml		
CL Body D3	271-043-50	50 ml		
CL Body D4	271-044-50	50 ml		
CL Body Diluting	271-050-50	50 ml		
CL Enamel I			271-051-20	20 ml
CL Enamel II			271-052-20	20 ml
CL Effect Blue			271-061-20	20 ml
CL Effect Grey			271-065-20	20 ml
CL Effect Brown			271-071-20	20 ml
CL Effect Orange			271-075-20	20 ml
CL Balancer			271-074-20	20 ml

CE 0481



Zirconium oxide / Coloring liquids



Brush I, Kolinsky-M

Brush for the application of Nacera® Classic Liquids.

REF 271-101-00

1 piece



Brush II, Kolinsky-S

Brush for the application of Nacera® Classic Liquids.

REF 271-102-00

1 piece



Nacera® Pipette

Accessory for Nacera® Classic Liquids.

REF 271-103-00

1 piece



Nacera® Funnel

Accessory for Nacera® Classic Liquids.

REF 271-104-00

1 piece



Nacera® Chrono

Chronometer as accessory for Nacera® Classic Liquids.

REF 271-105-00

1 piece



Nacera® Blue X set

Fluid to increase translucency.

- Individual. Increase translucency – at selected points
- Flexible. Anterior areas, incisal edges – wherever it is requested
- Efficient. No need for additional UHT zirconium blanks.

Indication: anterior and posterior region, bridges up to three units

REF 271-090-00

1 set

CE 0481

Zirconium oxide – accessories

Nacera® Clean powder starter kit

REF 271-120-00

1 x 200 g

Advantages:

- No more yellow or green discoloration of the sintered objects
- No particles on the zirconium oxide surface
- Absorbs coloring liquid sediments from the furnace chamber
- Ensures reliable, translucent results



Nacera® Clean powder bundle

REF 271-122-00

1 set

Advantages:

- No more yellow or green discoloration of the sintered objects
- No particles on the zirconium oxide surface
- Absorbs coloring liquid sediments from the furnace chamber
- Ensures reliable, translucent results

Set = 1 x 200 g, 4 x 30 g



Nacera® Calibrate

REF 271-135-00

1 set

Measuring equipment for the calibration of sintering and ceramic furnaces. Set with 15 calibration rings, reference ring and dial gauge.

NEW



Nacera® Calibration rings for sintering furnaces

REF 271-136-15

15 pieces

Calibration rings for sintering furnace.

NEW



Zirconium oxide – accessories



Nacera® Shine Zr

Nacera® Shine Zr is a diamond polishing paste to quickly achieve a long-lasting high-quality shine on zirconium oxide.

- high gloss finish of the fully-ceramic restoration in 90 seconds
- long-lasting high-quality shine on zirconium oxide
- very high diamond content and an exceptionally hard consistency – for less work and lower costs
- easy to handle and efficient in terms of consumption
- effective and time-saving to use

Indication: for shiny ceramic surfaces

REF 271-130-14

14 g

NEW



Nacera® Shine Zr Special Edition

Nacera® Shine Zr is a diamond polishing paste to quickly achieve a long-lasting high-quality shine on zirconium oxide.

- high gloss finish of the fully-ceramic restoration in 90 seconds
- long-lasting high-quality shine on zirconium oxide
- very high diamond content and an exceptionally hard consistency – for less work and lower costs
- easy to handle and efficient in terms of consumption
- effective and time-saving to use

Indication: for shiny ceramic surfaces

REF 271-131-14

14 g

NEW

