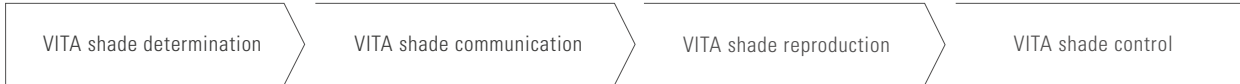


VITAVM[®]LC *flow* - the brilliant veneering composite

Precise modelling. Simple polishing.



Date of issue: 02.19

VITA – perfect match.

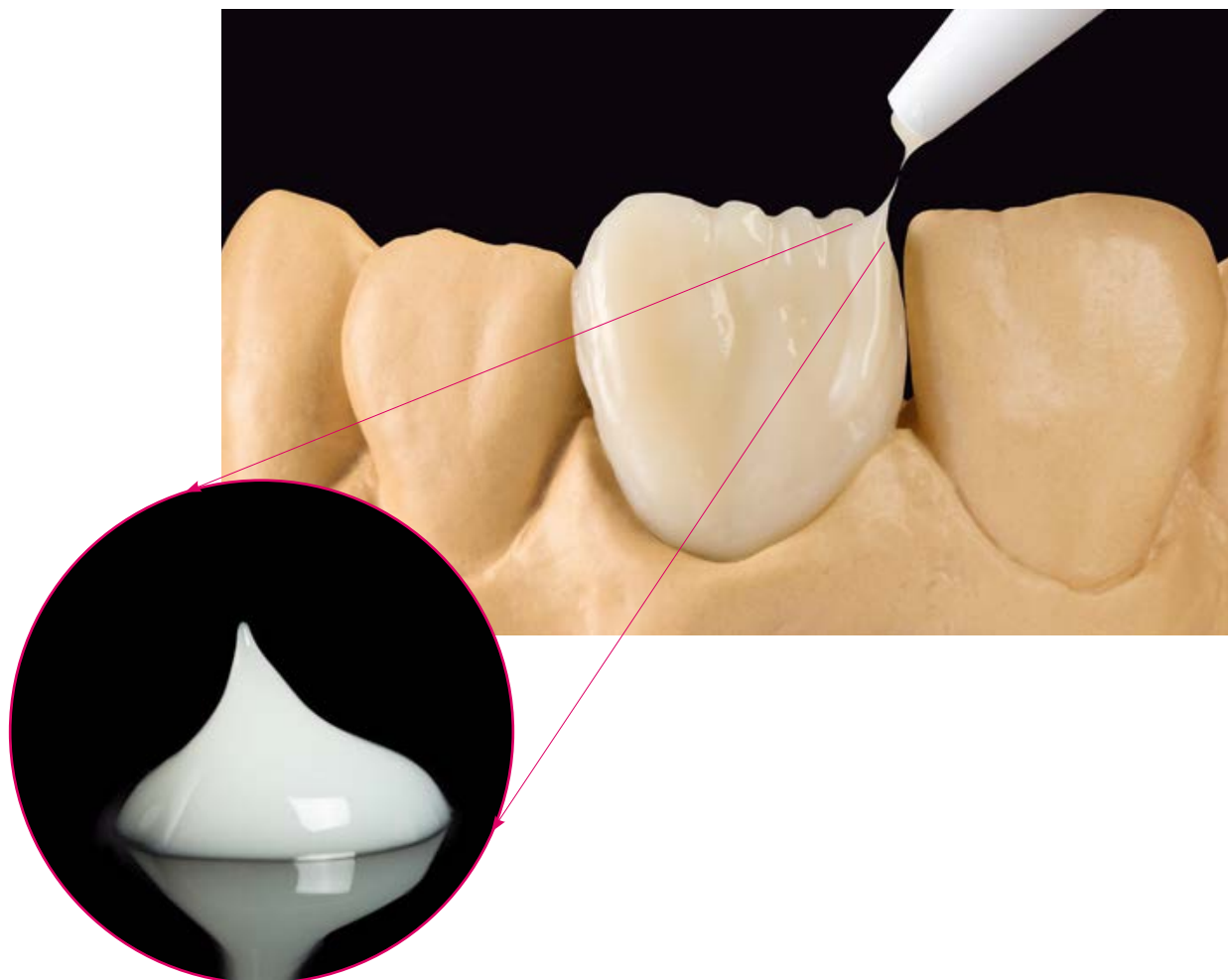
VITA

Product description

VITA VM LC flow is a flowable, light-curing veneering composite for permanent and removable restorations. The flowable consistency and high stability enable precise modelling of the

composite. The special material composition ensures simple polishing and produces homogeneous surfaces with brilliant high gloss.

FLOWABLE AND STABLE



What?

- VITA VM LC flow is a low-viscosity, light-curing veneering composite for permanent and removable restorations. The modern veneering system is characterized by excellent flowability with high stability.

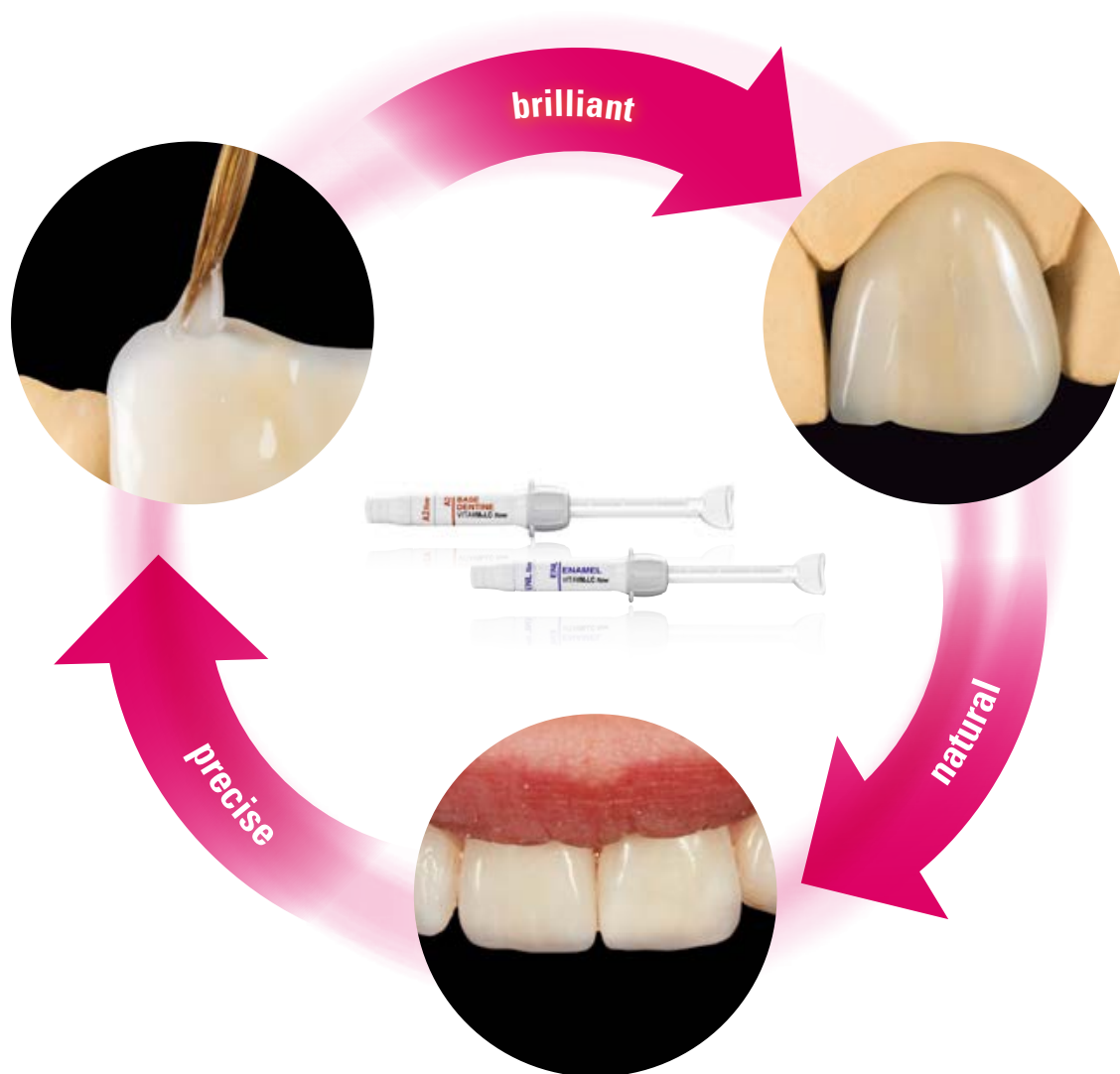
What for?

- VITA VM LC flow is suitable for a wide range of applications:
 - Veneering crowns, bridges, telescopic crowns, implant superstructures
 - Individualization of denture teeth
 - Reconstruction of gingival areas

With what?

- The main components of the VITA VM LC flow veneering system are: OPAQUE, BASE DENTINE, ENAMEL and various additional materials. Can be modelled directly using a syringe, brush or a probe.

Benefits



Precise

- Precise modelling, thanks to very good flowability and high stability, due to thixotropic consistency

Natural

- Lifelike results that look like natural teeth, thanks to ENAMEL and EFFECT materials with integrated translucency, opalescence and fluorescence.

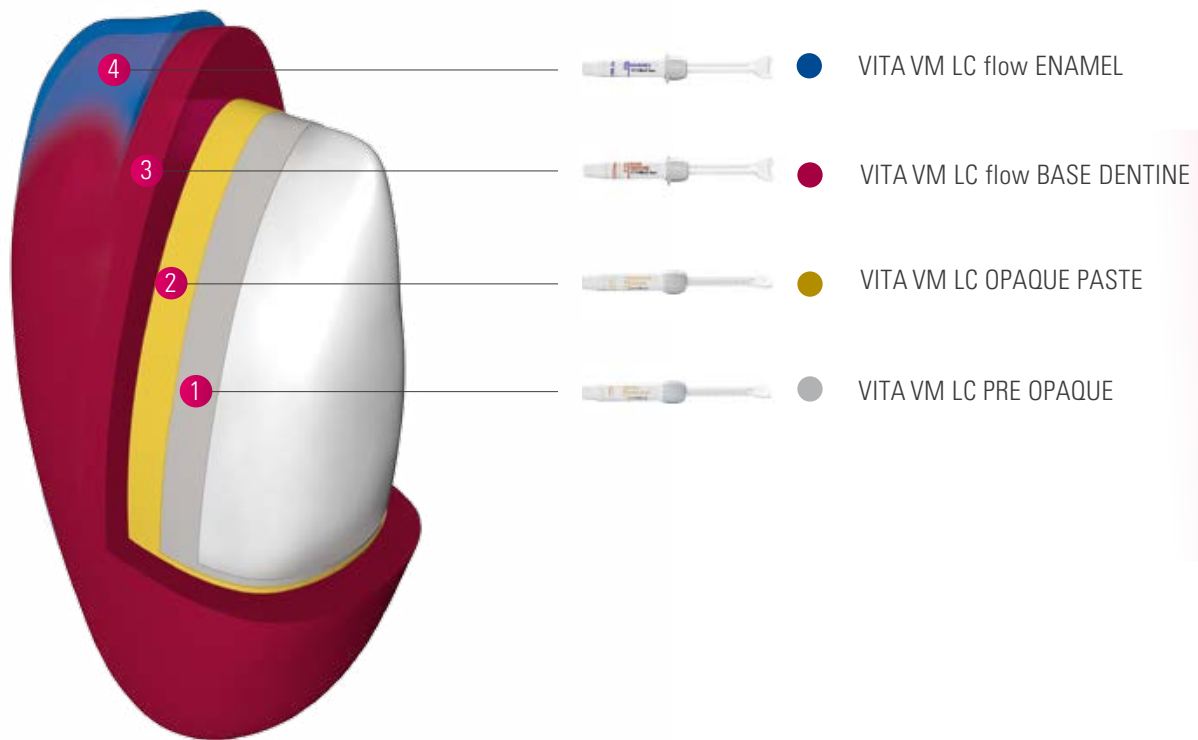
Brilliant

- Homogenous surfaces with brilliant high gloss, thanks to easy polishability based on a highly cross-linked polymer matrix with homogeneously distributed microfiller particles.

Durable

- High load capacity and surface resistance result in durable restorations, thanks to a material that provides excellent mechanical properties.

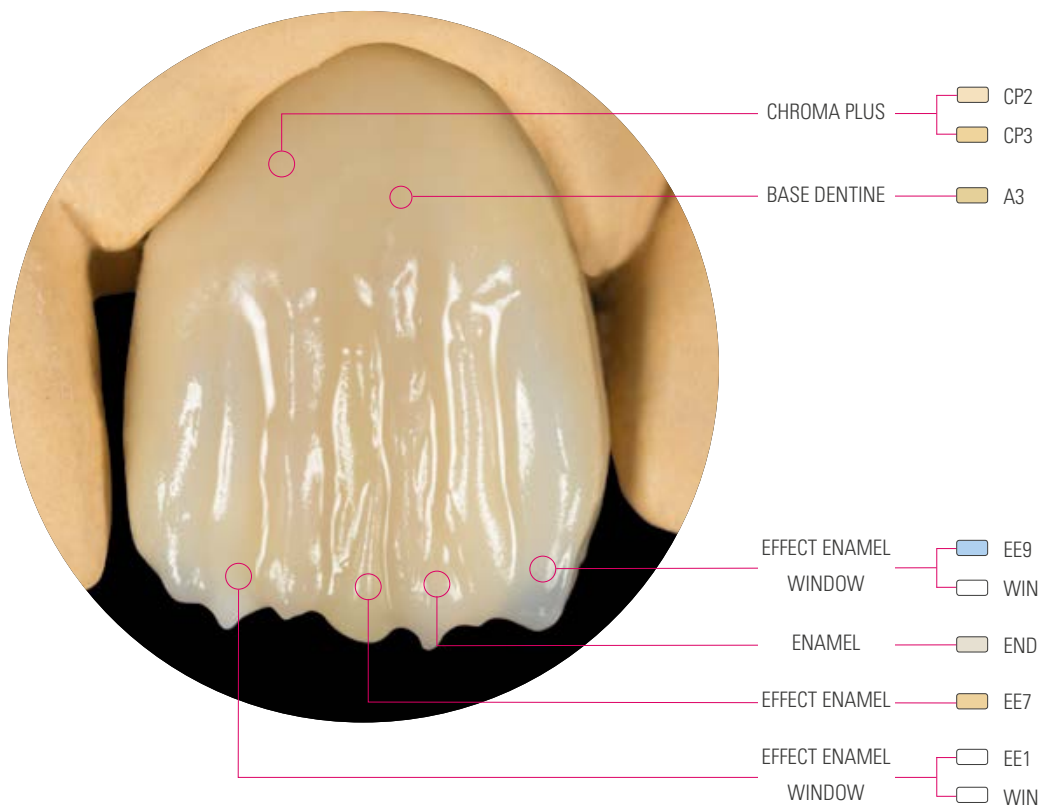
SYSTEM AND CONCEPT



VITAVM®**LC flow SYSTEM**: BASIC COMPONENTS

- VITA VM LC PRE OPAQUE and OPAQUE PASTE materials for masking framework structures
- VITA VM LC flow BASE DENTINE materials for neck and body areas
- VITA VM LC flow ENAMEL materials for the incisal area

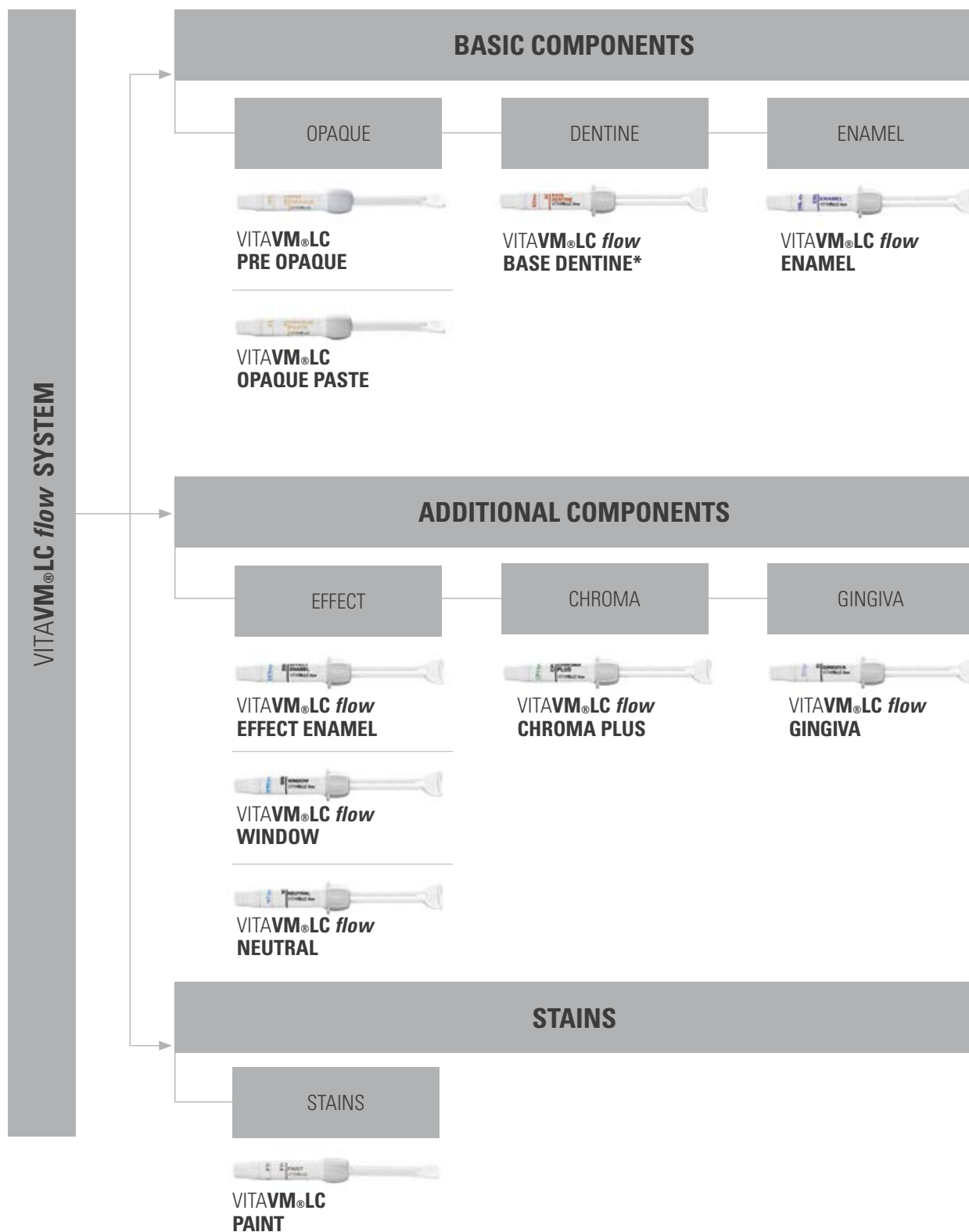
CASE EXAMPLE



VITAVM[®]LC *flow* SYSTEM: ADDITIONAL COMPONENTS

- VITA VM LC flow EFFECT materials for the incisal area
- VITA VM LC flow CHROMA PLUS materials for intensifying the shade in the neck and body areas
- VITA VM LC flow GINGIVA materials for reconstruction of gingival areas
- VITA VM LC PAINT stains for reproducing shade effects

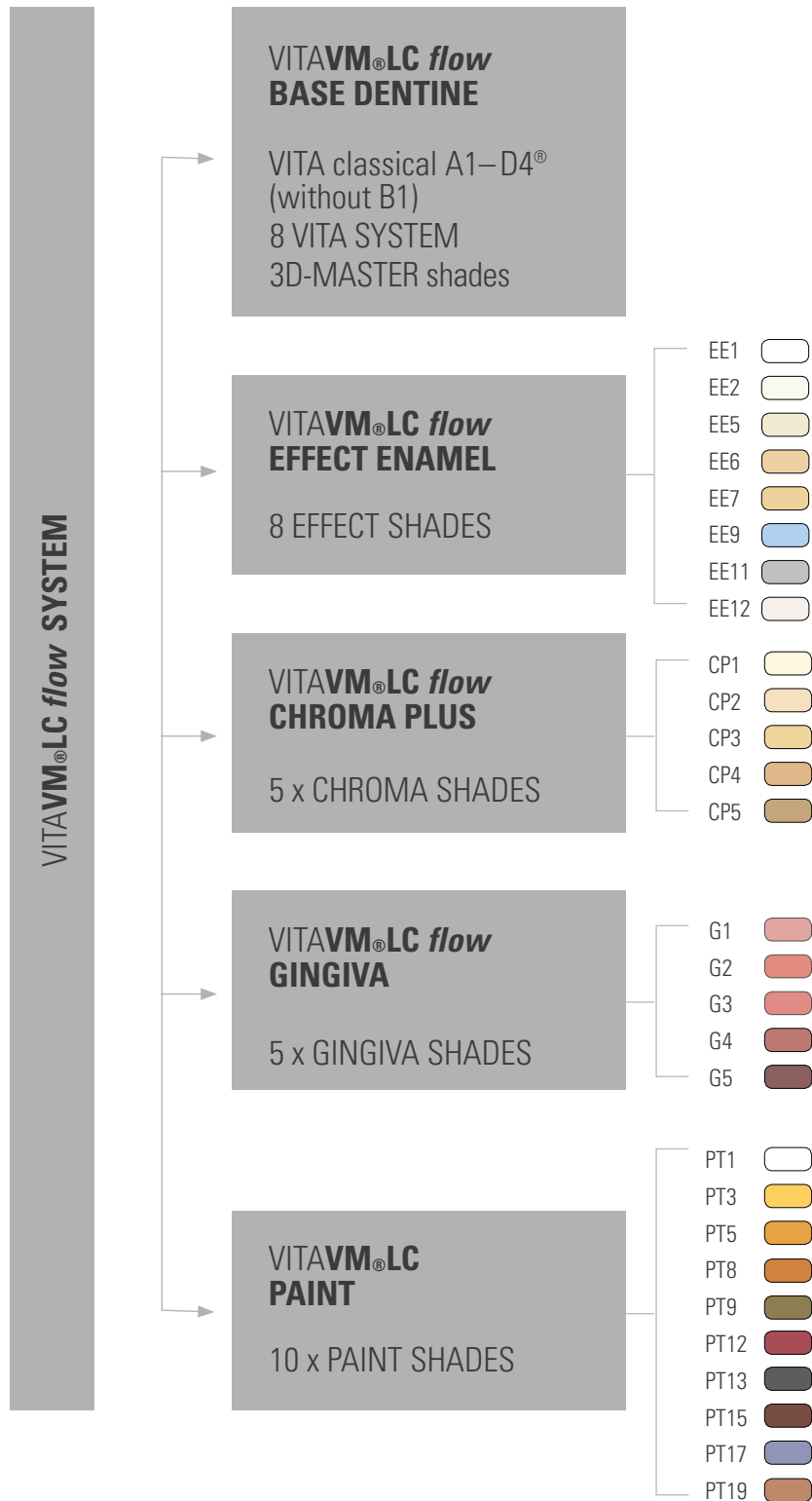
OVERVIEW OF COMPONENTS



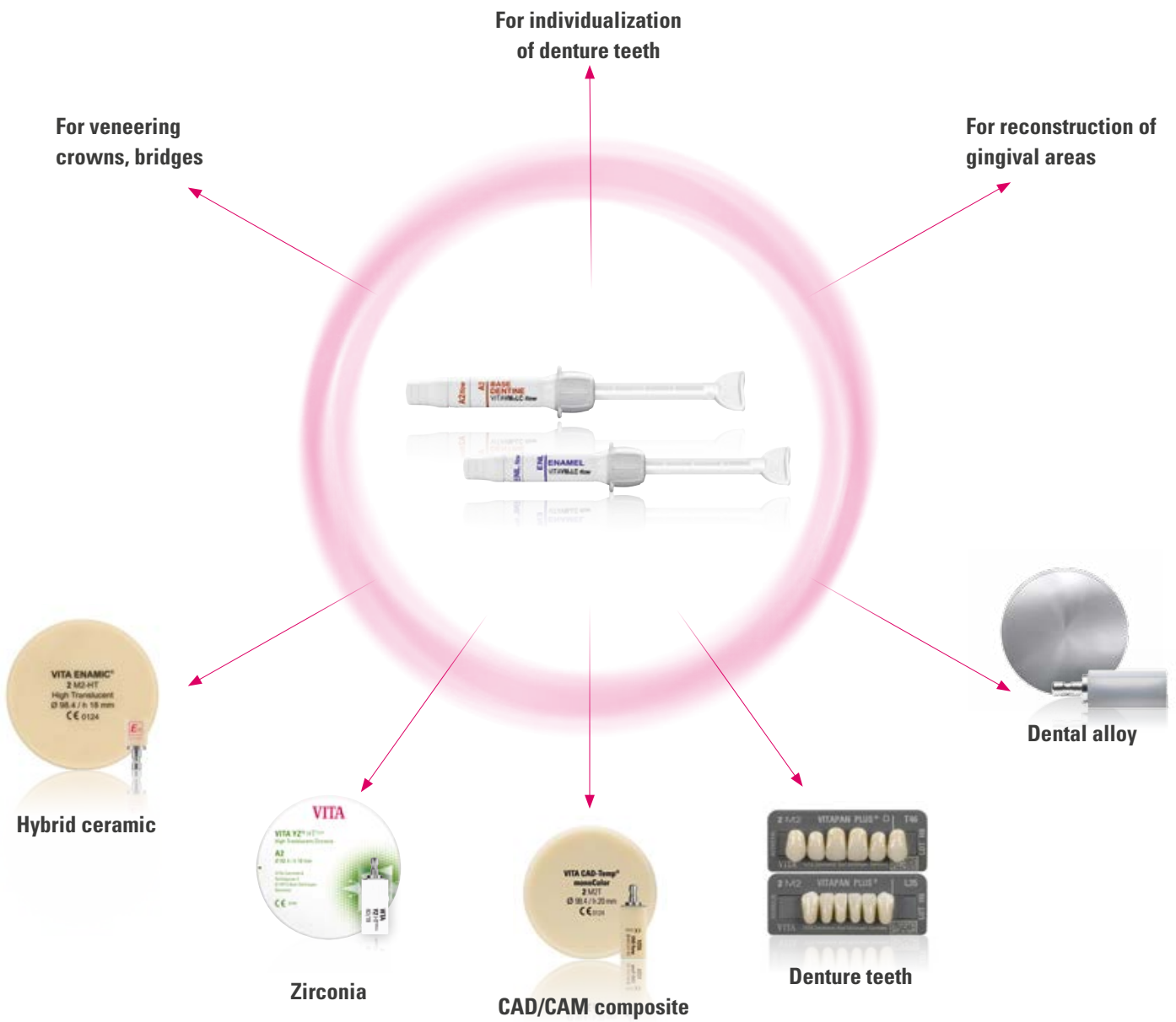
Note: The VITA VM LC flow SYSTEM is compatible with standard light-curing devices and bonding systems (primer) and ready for immediate use. A detailed overview is available at www.vita-zahnfabrik.com.

* Available in 8 VITA SYSTEM 3D-MASTER and 15 VITA classical A1 – D4 shades.

AVAILABLE SHADES



INDICATION RANGE AND MATERIALS



For which indications?

- Veneering crowns, bridges, telescopic crowns, implant superstructures
- Individualization of denture teeth
- Reconstruction of gingival areas

For which materials?

- Dental alloys
- Hybrid ceramic
- Zirconia
- CAD/CAM composite, PEEK
- Composite/polymer denture teeth

PROCESSING TOOLS



- **Brushes:**

VITA brush No. 1 (VITA Zahnfabrik), for example, and lay:art style brushes (Renfert GmbH) are suitable for modeling.



- **Polishing instruments:**

The polishers of the VITA ENAMIC Polishing Set technical (VITA Zahnfabrik) are particularly suitable for pre-polishing.



- **Polishing pastes:**

Polishing pastes suitable for composites, such as Renfert all-in-one (Renfert GmbH), are recommended for high gloss polishing.



- **Light-curing devices:**

Standard light-curing devices, such as Speed-Labolight (Hager & Werken), HiLite Power (Heraeus Kulzer), Visio Beta vario (3M ESPE) and many others, are suitable for polymerization.*



- **Bonding systems:**

For adhesive bonding of metal framework and VITA VM LC flow, the following bonding systems are recommended: Alloy Primer (Kuraray), Signum Metal Bond I + II (Heraeus Kulzer), Rocatec with ESPE Sil (3M ESPE) and many others.*



*) A comprehensive list of recommended light-curing devices is available at www.vita-zahnfabrik.com.

OVERVIEW OF ASSORTMENTS



VITAVM®**LC flow** BASIC KIT VITA classical A1–D4® (Prod. No. CVLCFBKCV2)

Basic kit for BASIC layering (DENTINE - paste / ENAMEL & additional flow materials)

Quantity	Contents	Product
1	3 g	VITA VM LC PRE OPAQUE
15	3 g	VITA VM LC OPAQUE PASTE A1-D4 (without B1)
15	4 g	VITA VM LC flow BASE DENTINE A1-D4 (without B1)
2	4 g	VITA VM LC flow ENAMEL ENL, END
1	4 g	VITA VM LC flow NEUTRAL NT
1	3 g	VITA VM LC flow WINDOW WIN
5	3 g	VITA VM LC flow CHROMA PLUS CP1 – CP5
1	5 ml	VITA VM LC GEL
1	10 ml	VITA VM LC MODELLING LIQUID
1	30 ml	VITA VM LC SEPARATOR
1	50 ml	VITA VM LC CLEANER
Accessories: mixing plate, brush holder, brush tips, brush, shade guide, shade indicator		

VITAVM®**LC flow** BASIC KIT SMALL* VITA classical A1-D4® (Prod. No. CVLCFBKSCV1)

Small basic kit for BASIC layering (DENTINE, ENAMEL & additional flow materials)

Quantity	Contents	Product
1	3 g	VITA VM LC PRE OPAQUE
6	3 g	OPAQUE PASTE A1, A2, A3, A3.5 B3, D3
6	4 g	flow BASE DENTINE A1, A2, A3, A3.5 B3, D3
2	4 g	VITA VM LC flow ENAMEL ENL, END
1	5 ml	VITA VM LC GEL
1	10 ml	VITA VM LC MODELLING LIQUID
1	30 ml	VITA VM LC SEPARATOR
1	50 ml	VITA VM LC CLEANER
Accessories: mixing plate, brush holder, brush tips, brush, shade guide, shade indicator		

*also available in VITA SYSTEM 3D-MASTER (Prod. No. CVLCFBKSV1)



VITAVM®LC flow TEST KIT* A3 (Prod. No. CVLCFTA3)

Single-shade kit for initial tests (DENTINE, ENAMEL & additional flow materials)

Quantity	Contents	Product
1	3 g	VITA VM LC PRE OPAQUE
1	3 g	VITA VM LC OPAQUE PASTE A3
1	4 g	VITA VM LC flow BASE DENTINE A3
1	4 g	VITA VM LC flow ENAMEL ENL
1	3 g	VITA VM LC flow CHROMA PLUS CP2
1	5 ml	VITA VM LC GEL
1	10 ml	VITA VM LC MODELLING LIQUID
1		Shade tabs A3
Accessories: brush		

VITAVM®LC flow PROFESSIONAL KIT (Prod. No. CVLCFPKV1)

For natural effects and characteristics

Quantity	Contents	Product
8	3 g	VITA VM LC flow EFFECT ENAMEL EE1, EE2, EE5, EE6, EE7, EE9, EE11, EE12
1	3 g	VITA VM LC flow WINDOW WIN
1	4 g	VITA VM LC flow NEUTRAL NT
1		VITA VM shade indicator "Individual"

VITAVM®LC flow CREATIVE KIT (Prod. No. CVLCFCKV1)

For layering over CAD-Temp and for individualizing VITA acrylic teeth.

Quantity	Contents	Product
4	2 g	VITA VM LC PAINT PT1, PT5, PT15, PT17
1	4 g	VITA VM LC flow ENAMEL ENL
2	3 g	VITA VM LC flow EFFECT ENAMEL EE6, EE9
1	4 g	VITA VM LC flow NEUTRAL NT
1	3 g	VITA VM LC flow WINDOW WIN
1	5 ml	VITA VM LC GEL
1	10 ml	VITA VM LC MODELLING LIQUID
Accessories: brush		

VITAVM®LC flow CHROMA KIT (Prod. No. CVLCFCHK)

Assortment for shade intensification in the neck/body areas

Quantity	Contents	Product
5	3 g	VITA VM LC flow CHROMA PLUS CP1–CP5
1		VITA VM INDIVIDUAL shade indicator

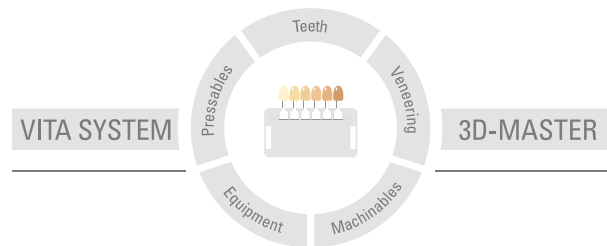
VITAVM®LC flow GINGIVA KIT (Prod. No. CVLCFGK)

Assortment for reconstruction of gingival areas

Quantity	Contents	Product
1	3 g	VITA VM LC GINGIVA OPAQUE PASTE GOL
5	3 g	VITA VM LC flow GINGIVA G1–G5
1		VITA VM INDIVIDUAL shade indicator

*Also available in VITA SYSTEM 3D-MASTER 2M2 (Prod. No. CVLCFTK2M2)

More information on VITA VM LC flow
is available at www.vita-zahnfabrik.com



Please note: Our products must be used in accordance with the instructions for use. We accept no liability for any damage resulting from incorrect handling or usage. The user is furthermore obliged to check the product before use with regard to its suitability for the intended area of applications. We cannot accept any liability if the product is used in conjunction with materials and equipment from other manufacturers that are not compatible or not authorized for use with our product and this results in damage. The VITA Modulbox is not necessarily a component of the product. Date of issue of this information: 02.19

After the publication of this information for use any previous versions become obsolete. The current version can be found at www.vita-zahnfabrik.com

VITA Zahnfabrik has been certified and the following products bear the CE mark **CE 0124** :

VITAVM[®] **LC flow**

The products/systems of other manufacturers mentioned in this document are registered trademarks of the respective manufacturers.

VITA

VITA Zahnfabrik H. Rauter GmbH & Co.KG
Spitalgasse 3 · D-79713 Bad Säckingen · Germany
Tel. +49(0)7761/562-0 · Fax +49(0)7761/562-299
Hotline: Tel. +49(0)7761/562-222 · Fax +49(0)7761/562-446
www.vita-zahnfabrik.com · info@vita-zahnfabrik.com
 facebook.com/vita.zahnfabrik