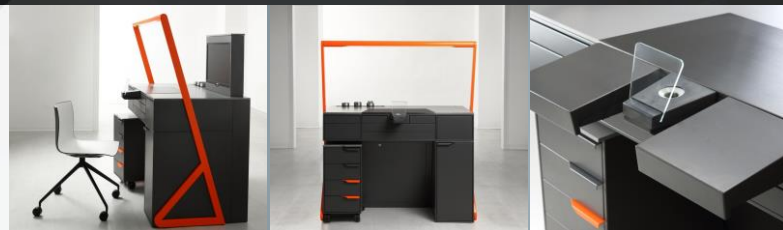




**S\_LAB**

Saratoga Srl Italy | All Rights Reserved - 2023

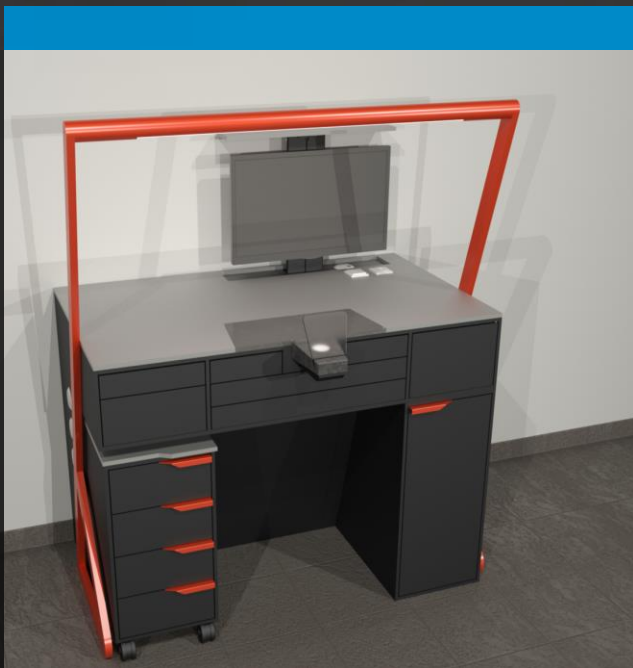


**SARATOGADENTAL.IT**



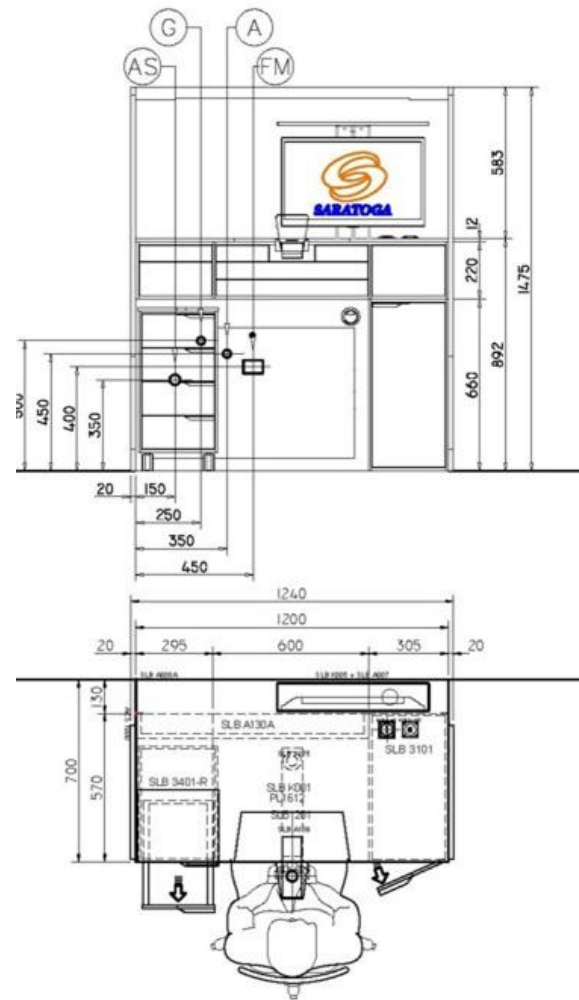
# S\_LAB

SLB S01



## Laboratory bench made of:

- Steel bench with 2 push-pull drawers
- Control panel with housing for micromotor, air syringe, retractable door
- Wood suction pad with glass protection
- polished steel protection for the counter top
- Dimmable LED lamp integrated in the structure, 5000K, with adjustable diffusion.
- 4 drawer trolley, soft closing
- Door side cabinet with internal shelf, housing for suction motor
- Lockable front panel, to allow easy access to the technical channel
- Lift system for disappearing monitor
- N.1 electrical socket and 1 usb socket

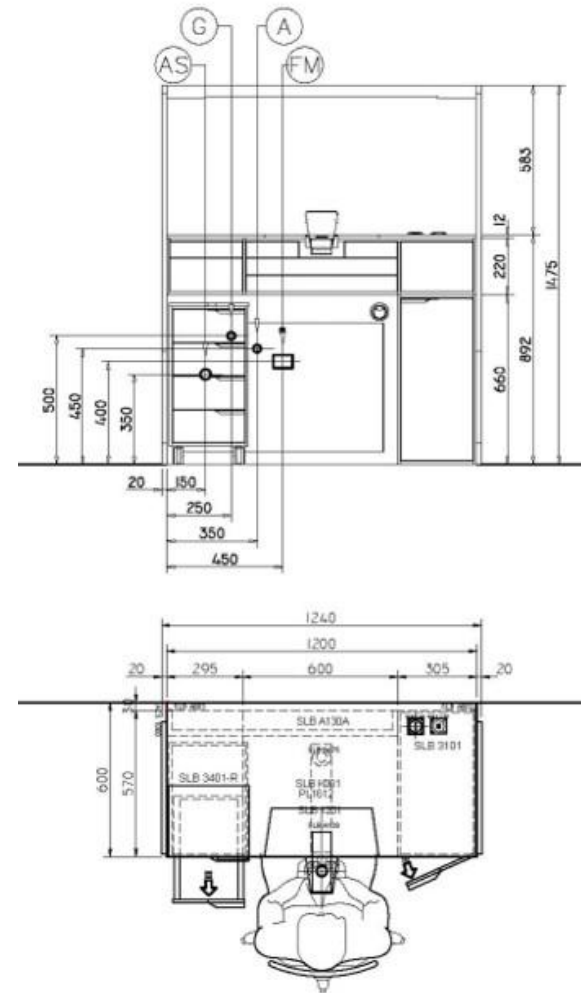


# S\_LAB

# SLB S02



- Steel bench with 2 push-pull drawers
- Control panel with housing for micromotor, air syringe, retractable door
- Wood suction pad with glass protection
- polished steel protection for the counter top
- Dimmable LED lamp integrated in the structure, 5000K, with adjustable diffusion.
- 4 drawer trolley, soft closing
- Door side cabinet with internal shelf, housing for suction motor
- Lockable front panel, to allow easy access to the technical channel
- N.1 electrical socket and 1 usb socket





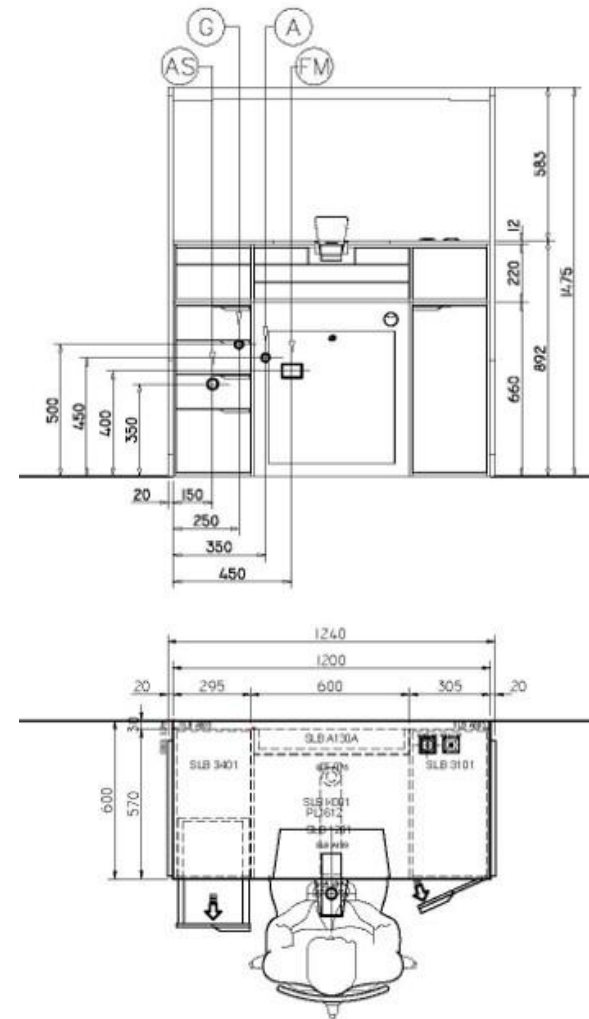
# S\_LAB

SLB S03



## Laboratory bench made of:

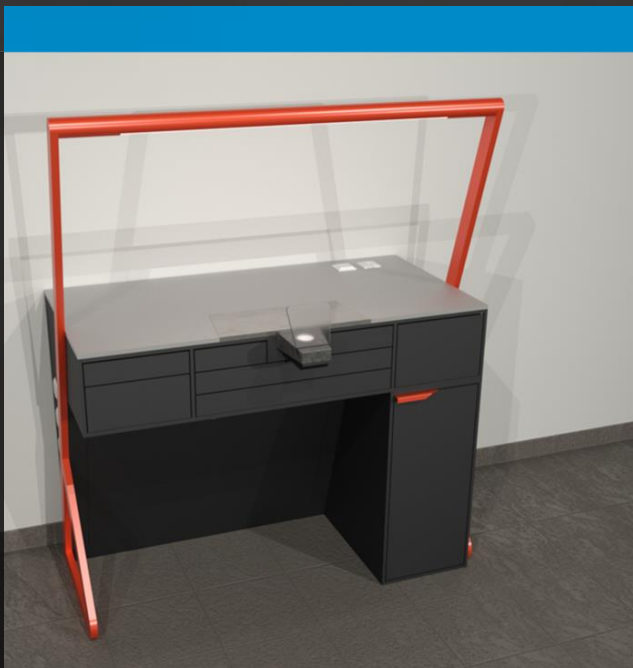
- Steel bench with 2 push-pull drawers
- Control panel with housing for micromotor, air syringe, retractable door
- Wood suction pad with glass protection
- polished steel protection for the counter top
- Dimmable LED lamp integrated in the structure, 5000K, with adjustable diffusion.
- 4 drawer cabinet, soft closing
- Door side cabinet with internal shelf, housing for suction motor
- Lockable front panel, to allow easy access to the technical channel
- N.1 electrical socket and 1 usb socket





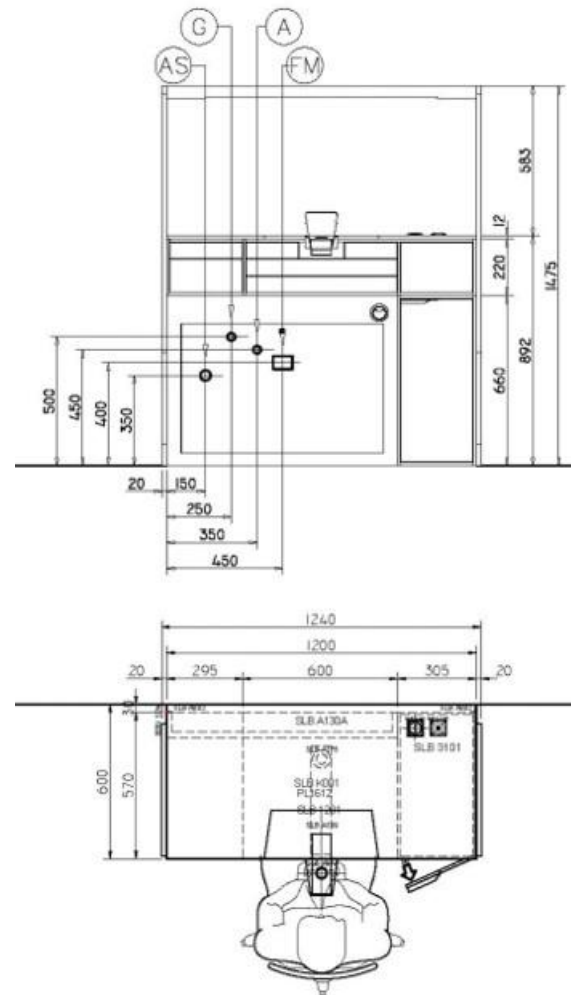
# S\_LAB

SLB S04



## Laboratory bench made of:

- Steel bench with 2 push-pull drawers
- Control panel with housing for micromotor, air syringe, retractable door
- Wood suction pad with glass protection
- polished steel protection for the counter top
- Dimmable LED lamp integrated in the structure, 5000K, with adjustable diffusion.
- Door side cabinet with internal shelf, housing for suction motor
- Lockable front panel, to allow easy access to the technical channel
- N.1 electrical socket and 1 usb socket





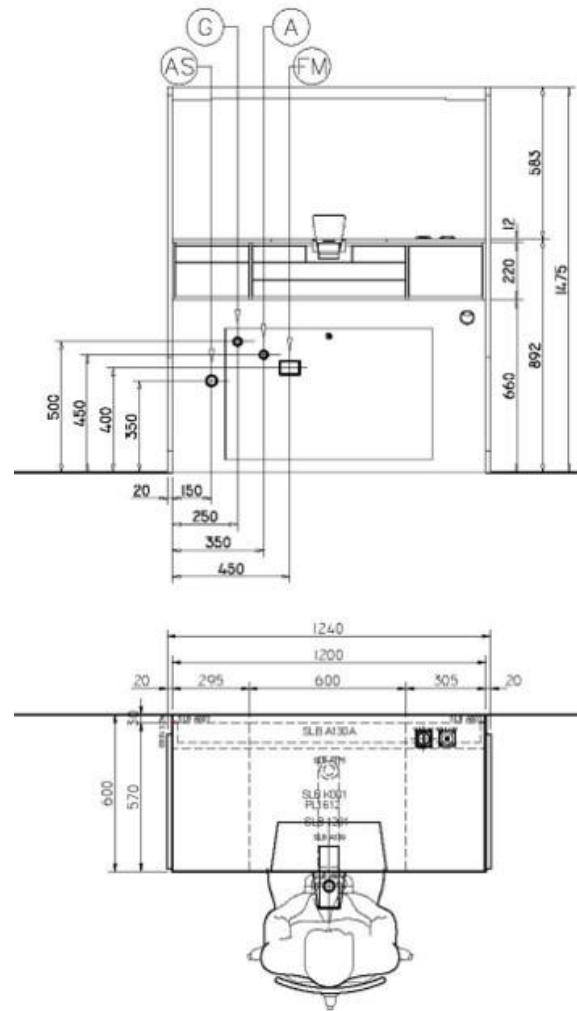
# S\_LAB

SLB S05



## Laboratory bench made of:

- Steel bench with 2 push-pull drawers
- Control panel with housing for micromotor, air syringe, retractable door
- Wood suction pad with glass protection
- polished steel protection for the counter top
- Dimmable LED lamp integrated in the structure, 5000K, with adjustable diffusion.
- Lockable front panel, to allow easy access to the technical channel
- N.1 electrical socket and 1 usb socket





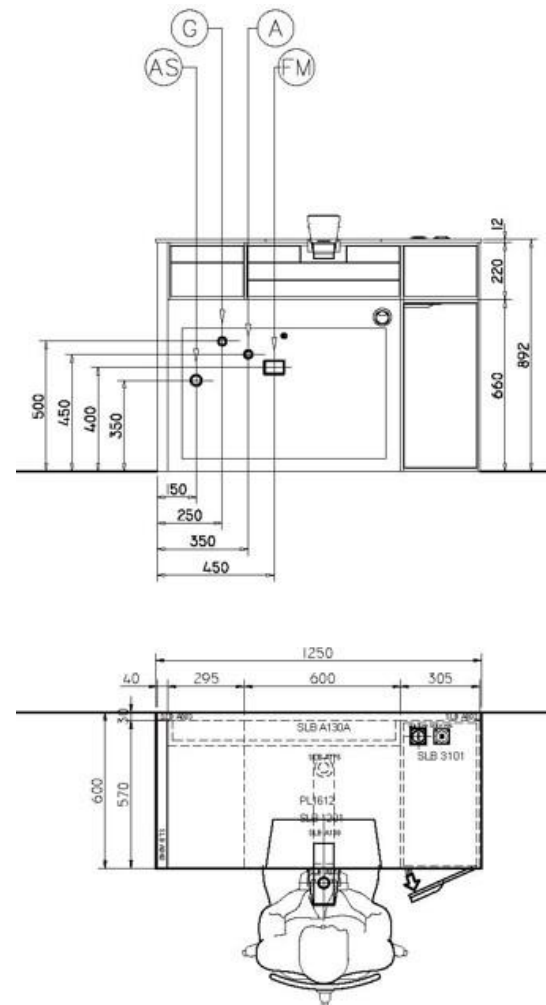
# S\_LAB

SLB S06



## Laboratory bench made of:

- Steel bench with 2 push-pull drawers
- Control panel with housing for micromotor, air syringe, retractable door
- Wood suction pad with glass protection
- polished steel protection for the counter top
- Dimmable LED lamp integrated in the structure, 5000K, with adjustable diffusion.
- Lockable front panel, to allow easy access to the technical channel
- Lift system for disappearing monitor
- N.1 electrical socket and 1 usb socket







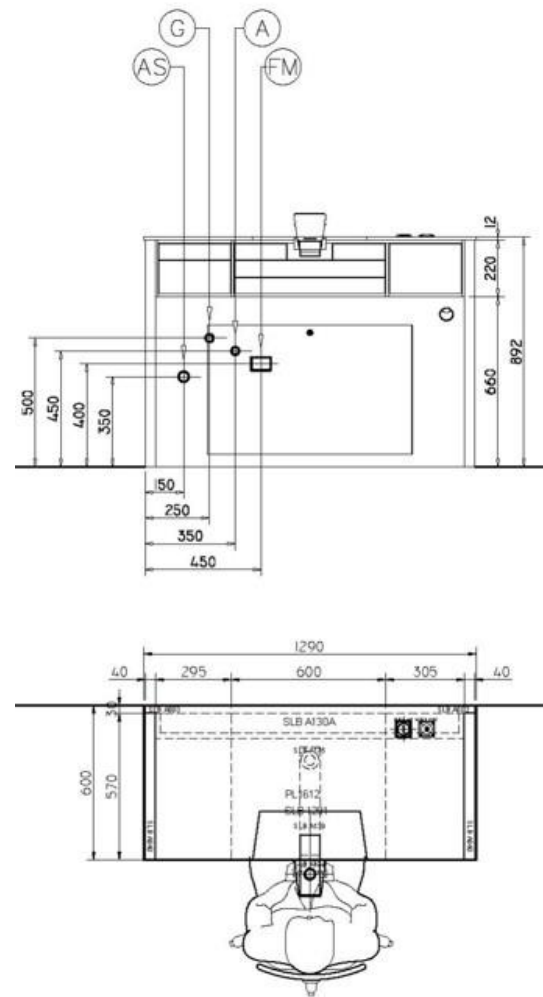
# S\_LAB

SLB S07



## Laboratory bench made of:

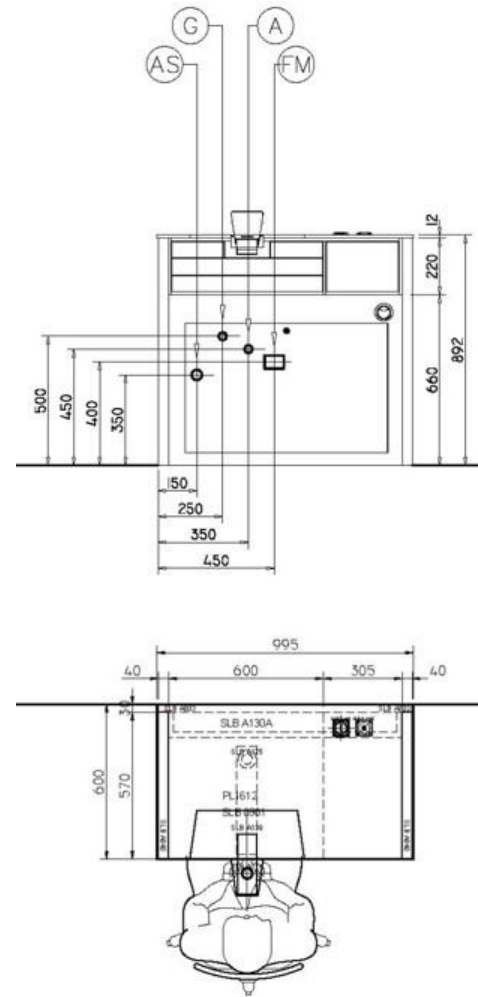
- Posto lavoro con due cassetti apertura push
- Pannello comandi con alloggiamento per micromotore, siringa aria sportello a scomparsa
- Zeppa in legno grigio antracite
- Lamiera di protezione in inox grigio satinato
- Pannello di finitura dotato di serratura, con vano ispezionabile
- Colori RAL o ARC a scelta







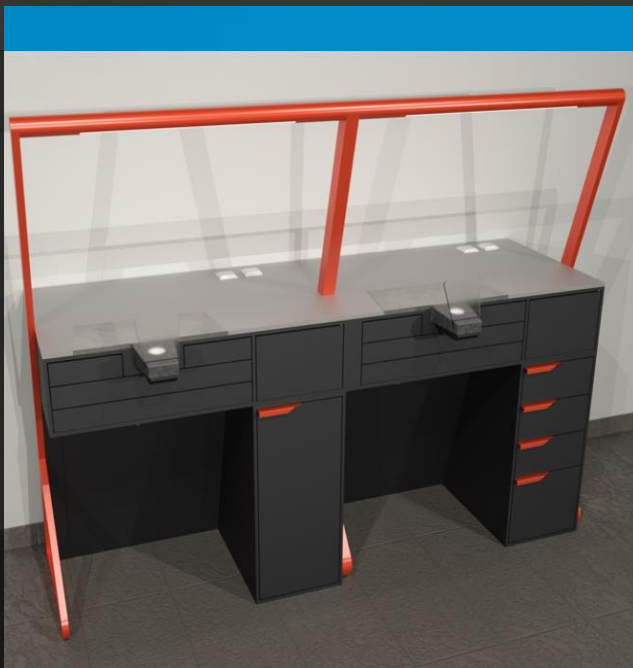
- Steel bench with 2 push-pull drawers
- Control panel with housing for micromotor, air syringe, retractable door
- Wood suction pad with glass protection
- polished steel protection for the counter top
- Dimmable LED lamp integrated in the structure, 5000K, with adjustable diffusion.
- Lockable front panel, to allow easy access to the technical channel
- Lift system for disappearing monitor
- N.1 electrical socket and 1 usb socket





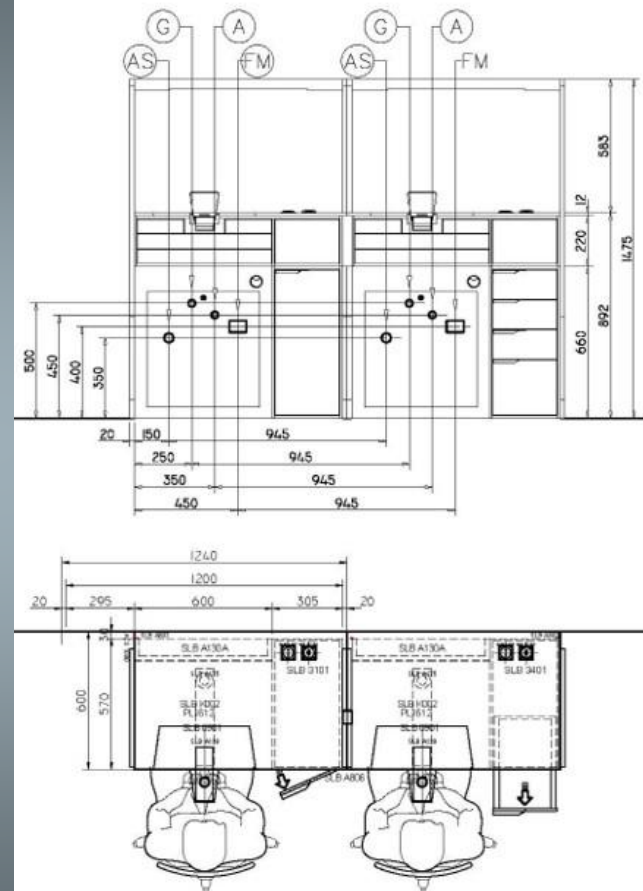
# S\_LAB

SLB S09



## Laboratory bench for 2 operators made of:

- Laboratory bench for 2 operators made of:
- Steel benches with 2 push-pull drawers
- Control panel with housing for micromotor, air syringe, retractable door
- Wood suction pad with glass protection
- polished steel protection for the counter top
- Dimmable LED lamp integrated in the structure, 5000K, with adjustable diffusion.
- 4 drawer cabinet, soft closing
- Door side cabinet with internal shelf, housing for suction motor
- Lockable front panel, to allow easy access to the technical channel
- N.1 electrical socket and 1 usb socket

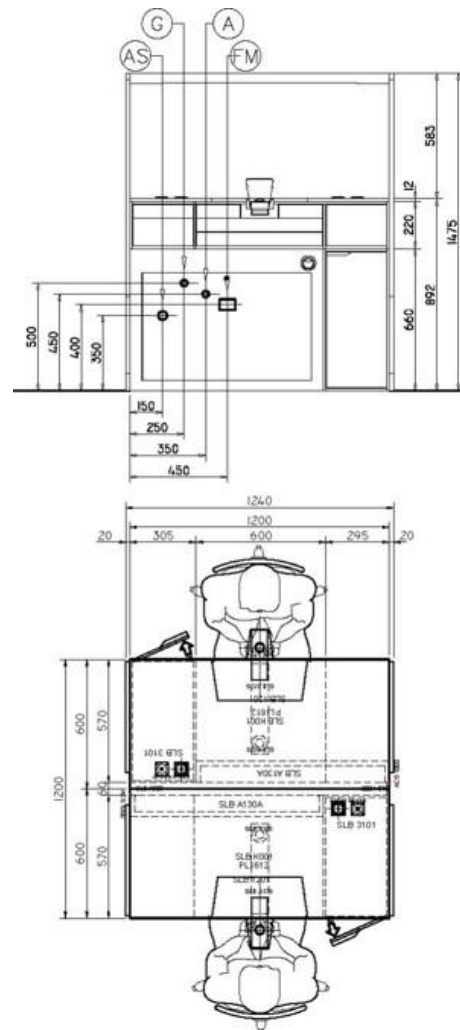


# S\_LAB

# SLB S10



- Steel benches with 2 push-pull drawers
- Control panel with housing for micromotor, air syringe, retractable door
- Wood suction pad with glass protection
- polished steel protection for the counter top
- Dimmable LED lamp integrated in the structure, 5000K, with adjustable diffusion.
- 4 drawer cabinet, soft closing
- Door side cabinet with internal shelf, housing for suction motor
- Lockable front panel, to allow easy access to the technical channel
- N.1 electrical socket and 1 usb socket each





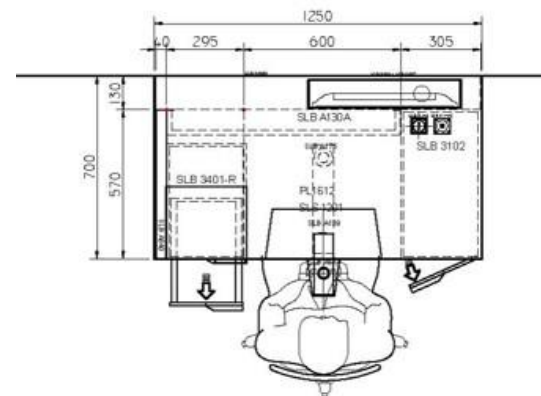
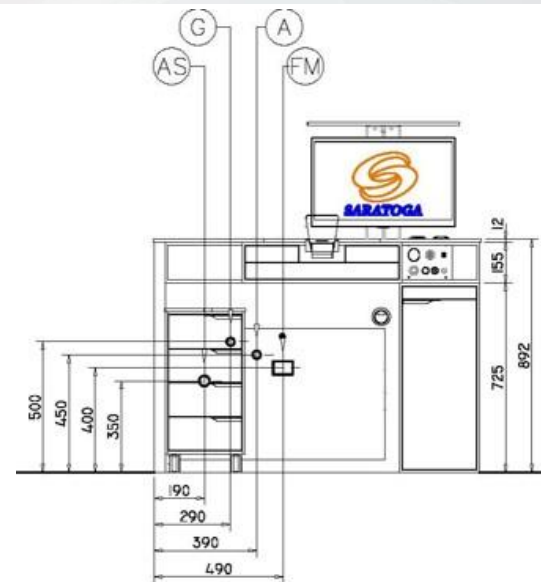
# S\_LAB SLIM

SLS S01



## Laboratory bench made of:

- Steel bench with 1 push-pull drawers
- Control panel with housing for micromotor, air syringe, retractable door
- Wood suction pad with glass protection
- polished steel protection for the counter top
- 4 drawer trolley, soft closing
- Door side cabinet with internal shelf, housing for suction motor
- Lockable front panel, to allow easy access to the technical channel
- Lift system for disappearing monitor
- N.1 electrical socket and 1 usb socket





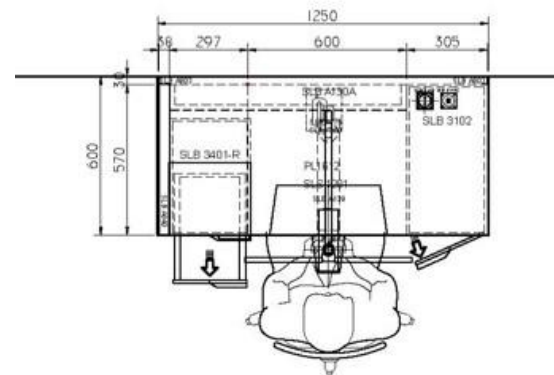
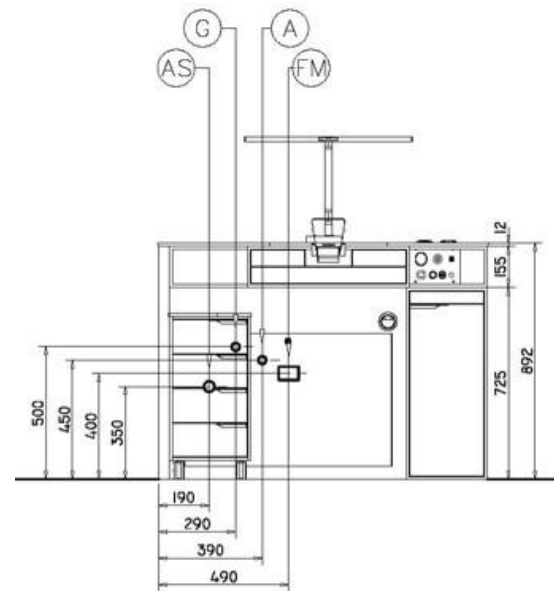
# S\_LAB SLIM

SLS S02



## Laboratory bench made of:

- Steel bench with 1 push-pull drawers
- Control panel with housing for micromotor, air syringe, retractable door
- Wood suction pad with glass protection
- polished steel protection for the counter top
- 4 drawer trolley, soft closing
- Door side cabinet with internal shelf, housing for suction motor
- Lamp with 3 light sources, 2700°-5700°K, 1000 lumen with USB
- Lockable front panel, to allow easy access to the technical channel
- N.1 electrical socket and 1 usb socket





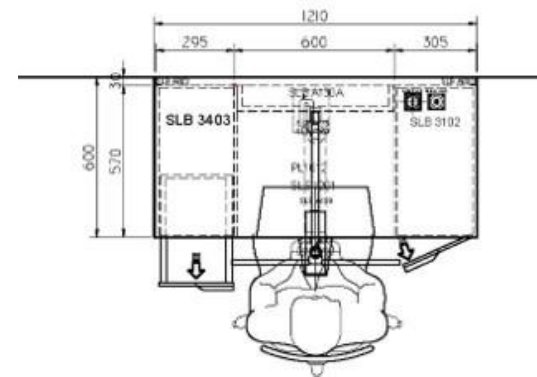
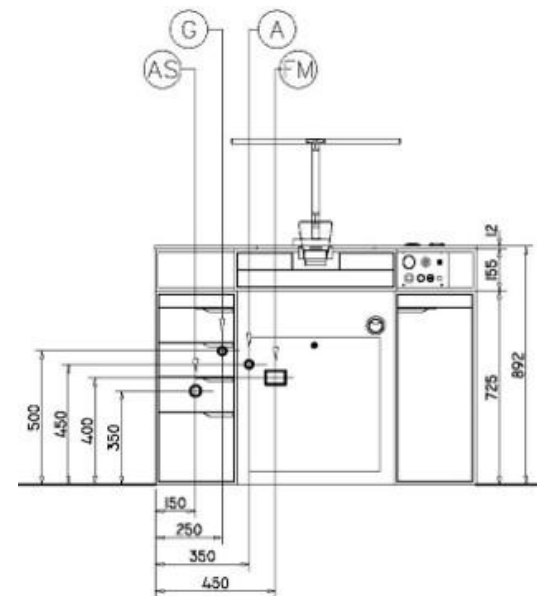
# S\_LAB SLIM

SLS S03



## Laboratory bench made of:

- Steel bench with 1 push-pull drawers
- Control panel with housing for micromotor, air syringe, retractable door
- Wood suction pad with glass protection
- polished steel protection for the counter top
- 4 drawer cabinet, soft closing
- Door side cabinet with internal shelf, housing for suction motor
- Lamp with 3 light sources, 2700°-5700°K, 1000 lumen with USB
- Lockable front panel, to allow easy access to the technical channel
- N.1 electrical socket and 1 usb socket







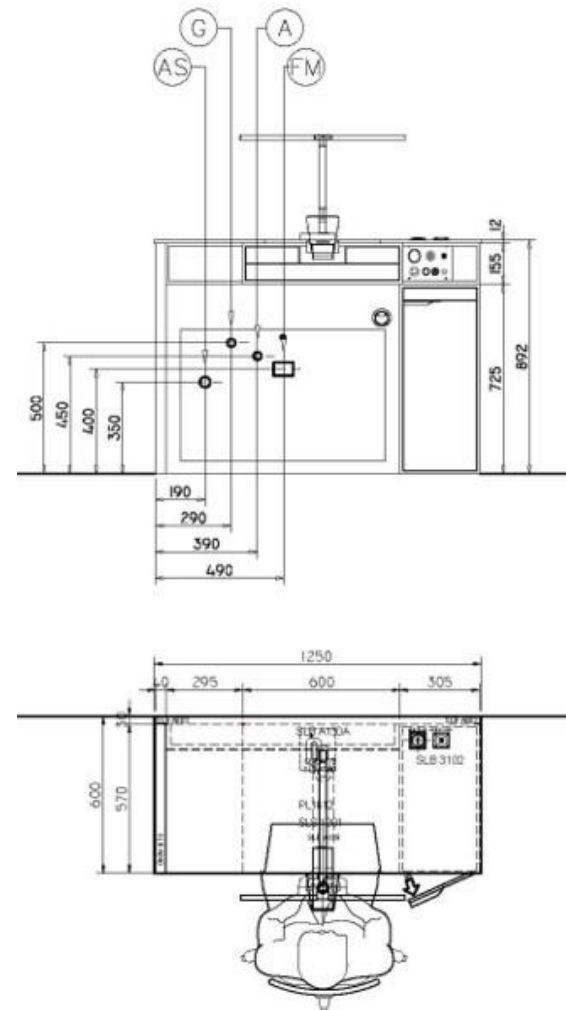
# S\_LAB SLIM

SLS S04



## Laboratory bench made of:

- Control panel with housing for micromotor, air syringe, retractable door
- Wood suction pad with glass protection
- polished steel protection for the counter top
- Door side cabinet with internal shelf, housing for suction motor
- Lamp with 3 light sources, 2700°-5700°K, 1000 lumen with USB
- Lockable front panel, to allow easy access to the technical channel
- N.1 electrical socket and 1 usb socket







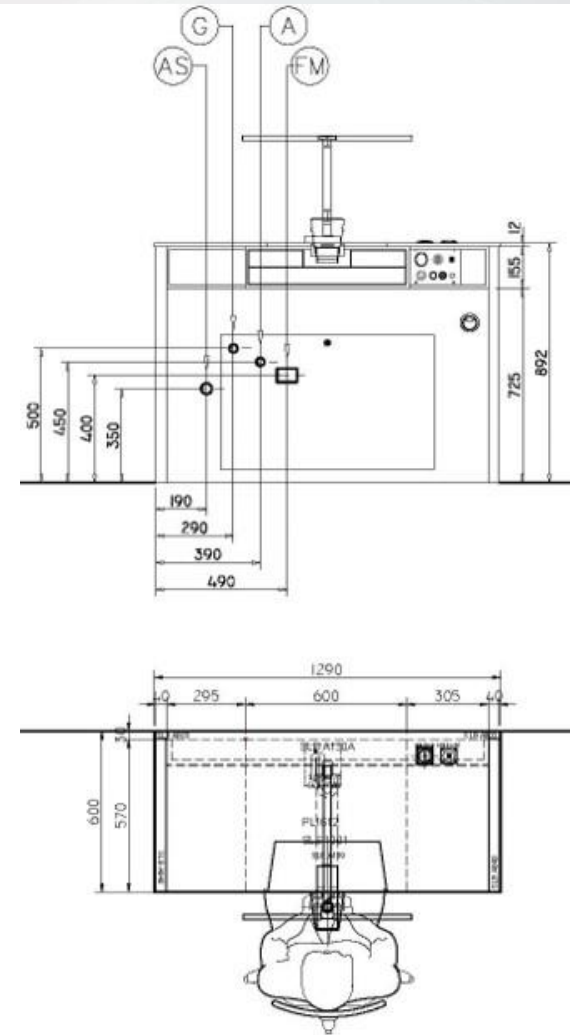
# S\_LAB SLIM

SLS S05



## Laboratory bench made of:

- Steel bench with 1 push-pull drawers
- Control panel with housing for micromotor, air syringe, retractable door
- Wood suction pad with glass protection
- polished steel protection for the counter top
- Lamp with 3 light sources, 2700°-5700°K, 1000 lumen with USB
- Lockable front panel, to allow easy access to the technical channel
- N.1 electrical socket and 1 usb socket





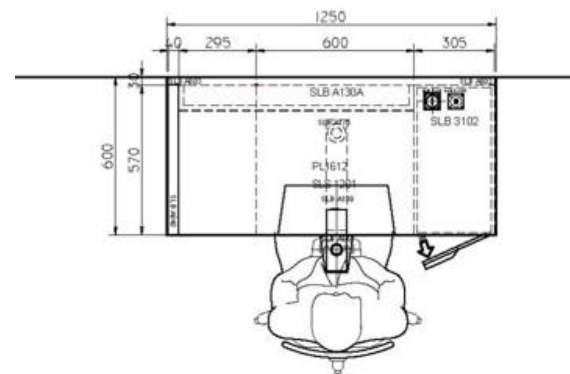
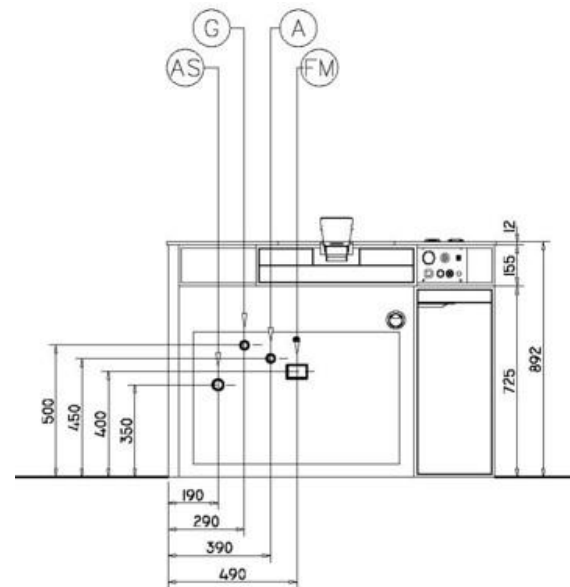
# S\_LAB SLIM

SLS S06



## Laboratory bench made of:

- Steel bench with 1 push-pull drawers
- Control panel with housing for micromotor, air syringe, retractable door
- Wood suction pad with glass protection
- polished steel protection for the counter top
- Door side cabinet with internal shelf, housing for suction motor
- Lockable front panel, to allow easy access to the technical channel
- N.1 electrical socket and 1 usb socket





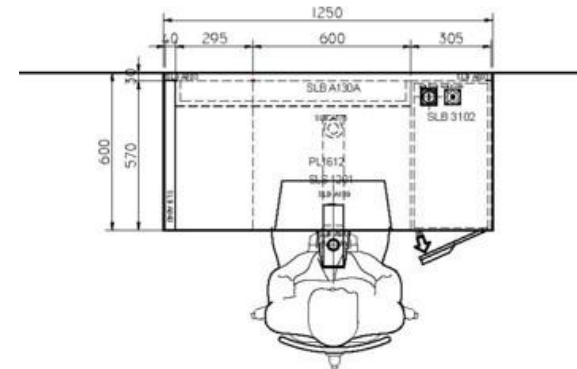
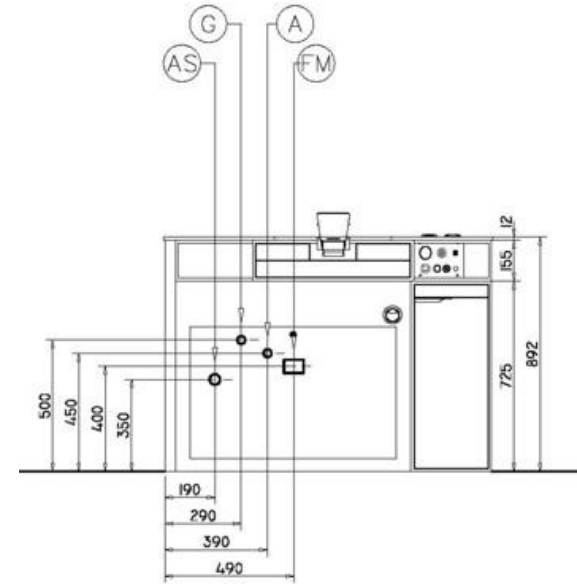
# S\_LAB SLIM

SLS S07



## Laboratory bench made of:

- Steel bench with 1 push-pull drawers
- Control panel with housing for micromotor, air syringe, retractable door
- Wood suction pad with glass protection
- polished steel protection for the counter top
- Lockable front panel, to allow easy access to the technical channel
- N.1 electrical socket and 1 usb socket





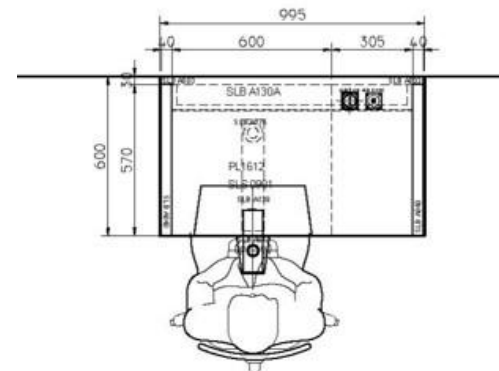
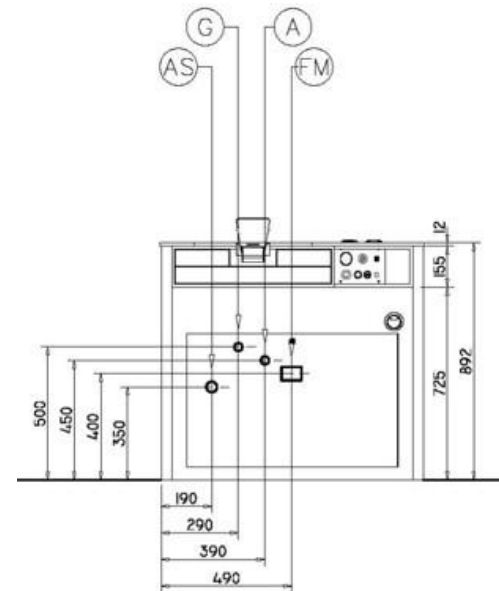
# S\_LAB SLIM

SLS S08



## Laboratory bench made of:

- Steel bench with 1 push-pull drawers
- Control panel with housing for micromotor, air syringe, retractable door
- Wood suction pad with glass protection
- polished steel protection for the counter top
- Lockable front panel, to allow easy access to the technical channel
- N.1 electrical socket and 1 usb socket





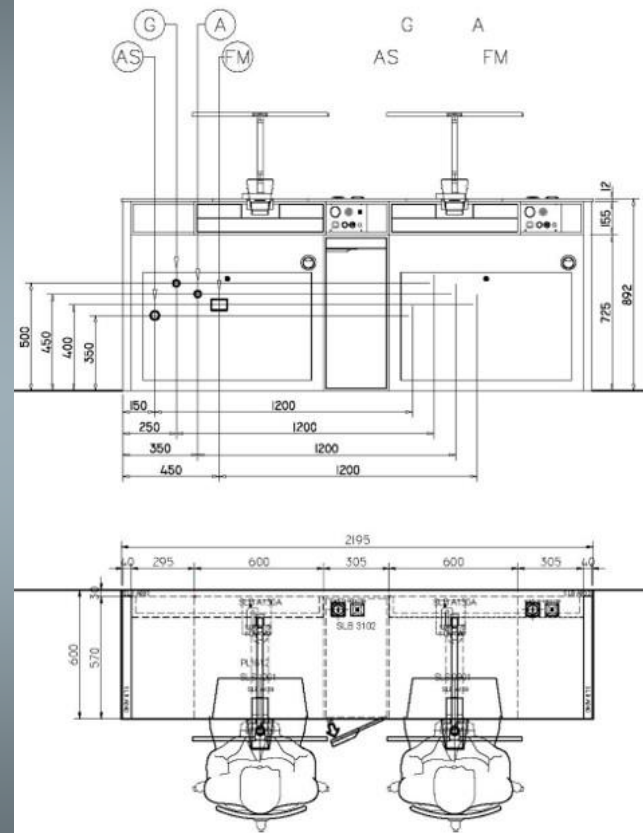
# S\_LAB SLIM

SLS S09  
STS



## Double laboratory bench made of:

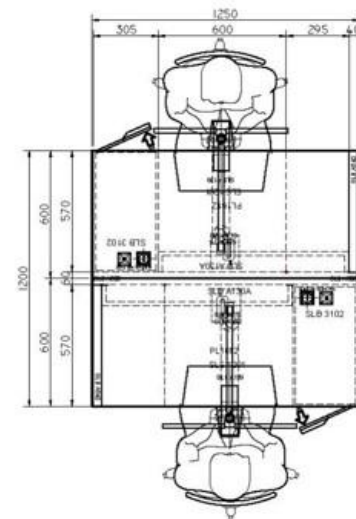
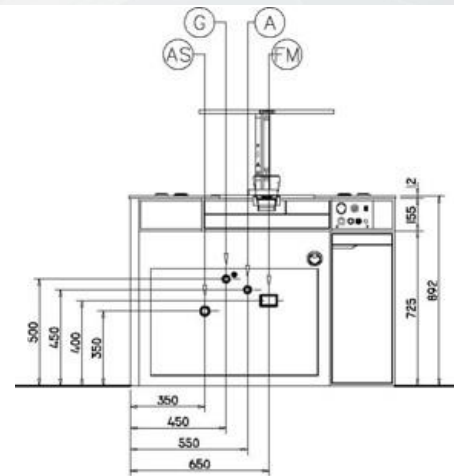
- Steel benches with 1 push-pull drawers
- Control panel with housing for micromotor, air syringe, retractable door
- Wood suction pad with glass protection
- polished steel protection for the counter top
- Door side cabinet with internal shelf, housing for suction motor
- 2 lamps with 3 light sources, 2700°-5700°K, 1000 lumen with USB
- Lockable front panel, to allow easy access to the technical channel
- N.2 electrical socket and 2 usb socket



# SLS10



- Steel benches with 1 push-pull drawers
- Control panel with housing for micromotor, air syringe, retractable door
- Wood suction pad with glass protection
- polished steel protection for the counter top
- Door side cabinet with internal shelf, housing for suction motor
- Lamp with 3 light sources, 2700°-5700°K, 1000 lumen with USB
- Lockable front panel, to allow easy access to the technical channel
- N.1 electrical socket and 1 usb socket





# .contact

## Saratoga SRL Italy

[tamara@saratogadental.it](mailto:tamara@saratogadental.it)

[Customer Service Director](#)

[mario@saratogadental.it](mailto:mario@saratogadental.it)

[Export Manager](#)

### OFFICE HOURS

Monday - Friday  
09.00 - 13.00  
14.00 - 17.30

### FOLLOW US

[www.saratogadental.it](http://www.saratogadental.it)

### GET IN TOUCH

(+39) 0434 572600

### OUR ADDRESS

Via Luciano Savio, 7,  
33170 Pordenone PN  
Italy