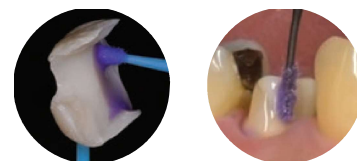


DENTAL CLEANING AGENT

KATANA™ Cleaner

For all restorative procedures
Intra- and extra-oral use



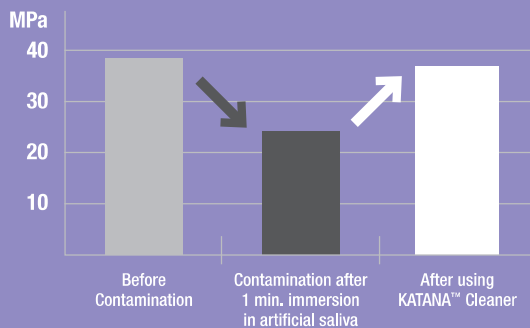
REMOVE CONTAMINATION TO OPTIMISE YOUR ADHESIVE PROCEDURES

During trial fitting your restoration might become contaminated with proteins reducing the bond strength. KATANA™ Cleaner has a high cleaning effect due to the surface active characteristic of MDP Salt.

In contrast to other cleaners, KATANA™ Cleaner has a pH value of 4.5¹ which allows usage not only extra-orally but also intra-orally. It is the easy way to optimise your bondings including cementation procedures.

1. Measuring method: JIS Z 8802:2011

Shear bond strength to KATANA™ Zirconia HT



Measurement conditions:
Substrate surface:
After #1000 sanding, alumina sandblasting.
Coverage area ø 5mm, measured at 37°C
underwater storage for 1 day.

Cement: PANAVIA™ V5

Data source: Kuraray Noritake Dental Inc.

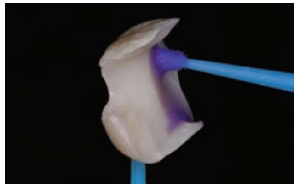
* Numerical values vary depending on measurement conditions.



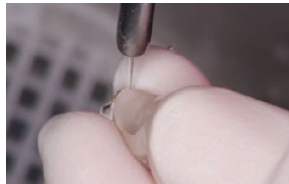
EASY & FAST PROCEDURE



Rub in, rinse and dry. That's all you need to do to optimise your adhesive procedure. Unlike other cleaners that require longer rubbing time, and are limited to extra-oral use only, **KATANA™ Cleaner only requires 10 seconds and can be used both intra- and extra-orally.**



Apply and rub KATANA™ Cleaner for at least 10 seconds. Both to the prosthetic and the intra-oral substrate.



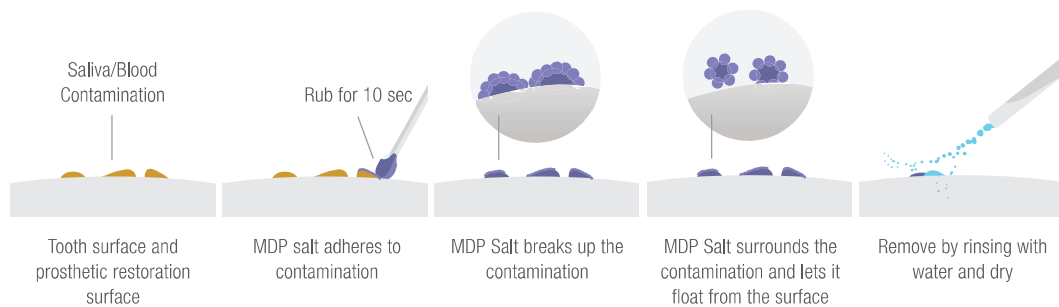
Rinse and dry.



Cement the restoration according to the manufacturer instructions.

Pictures courtesy of Dr. Shoji Kato

HOW IT WORKS



WIDE INDICATION RANGE: INTRA-ORAL AND EXTRA-ORAL

Due to its mild pH value of 4.5, KATANA™ Cleaner can be used not only extra-orally but also intra-orally, making it an all-purpose universal cleaner for both - tooth structure and prosthetics.



Intra-oral:

Cavity, Abutment, Root Canal



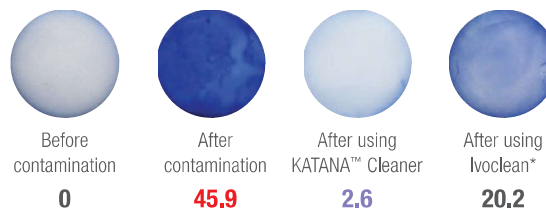
Prosthetics:

Ceramics (Zirconia, Lithium Disilicate, Dental Porcelain)
Resin Based Materials (CAD/CAM Crowns, Composite Resin)
Metals (Precious/Non Precious Metal Alloys)
Posts (Glass Fiber Posts, Metal Posts)

PROTEIN STAINING TEST CLEANING EFFECT ON ZIRCONIA

Contamination with artificial saliva

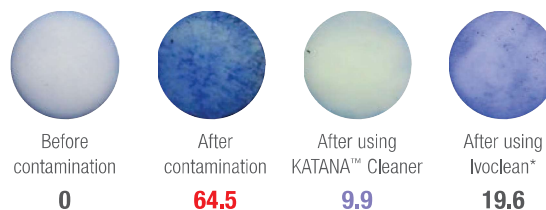
Contamination assessment based on the degree of staining with a stain that binds to proteins present in saliva.



Contamination with blood (human plasma)

The degree of contamination is evaluated by the degree of staining with an agent that binds to (albumin, fibrinogen, immunoglobulin) proteins present in human plasma.

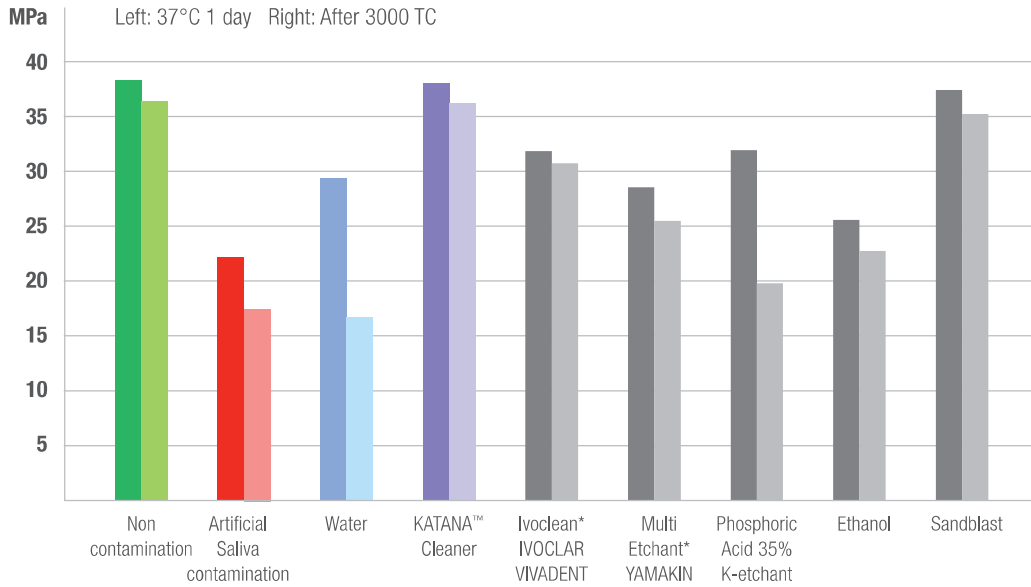
Data source: Kuraray Noritake Dental Inc.



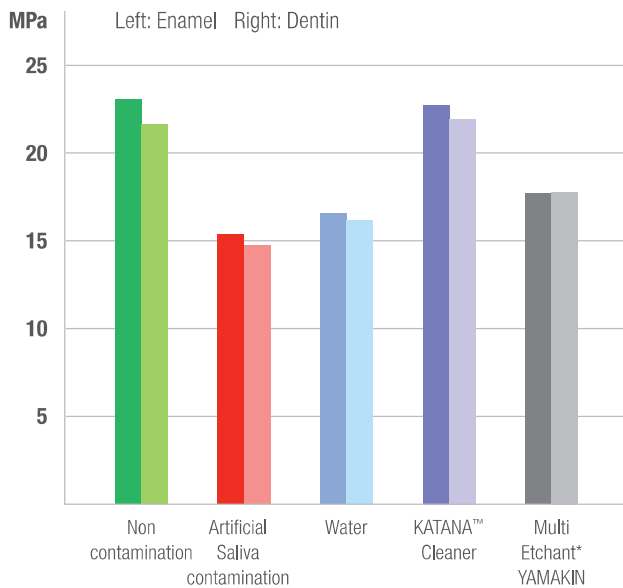
HIGH CLEANING EFFECT

During intra-oral try-in of restorations, contamination might occur reducing the bond strength. KATANA™ Cleaner's high cleaning effectiveness ensures for an optimised bonding surface.

Shear bond strength to KATANA™ Zirconia HT after cleaning with:



Shear bond strength to bovine enamel and dentin after cleaning with:



Cement: PANAVIA™ V5
 Data courtesy of Dr. Shoji Kato, The 38th Annual Meeting of Japan Society for Adhesive Dentistry
 Effect of various surface cleaning procedures on bonding performance
 * Not a trademark of Kuraray Noritake Dental Inc.

CLEANERS COMPARISON*

	KATANA™ CLEANER	IVOCLEAN** (IVOCLEAR VIVADENT)	ZIRCLEAN** (BISCO)
Intra-oral Use on Tooth Structure	Yes	No	No
Intra-oral Use on Implant Abutments	Yes	No	No
Extra-oral Use	Yes	Yes	Yes
Active Ingredient	MDP Salt (Surfactant)	Sodium Hydroxide	Potassium Hydroxide
pH	4.5	13-13.5	13
Application Time	10 Seconds	20 Seconds	20 Seconds
Handling	No Shaking	Shake Before Use	No Shaking

* According to the Instructions for Use and official documentation

** Not a trademark of Kuraray Noritake Dental Inc.

ORDERING INFORMATION

ARTICLE NUMBER	DESCRIPTION
#3970-EU	KATANA™ Cleaner (4.0ml)

SINGLE-
HANDED
FLIP TOP
CAP



YOUR IDEAL TEAMMATES:



PANAVIA™ V5

PANAVIA™ V5 is our strongest cement ever developed. And with five shades, our most esthetic one too. This makes a totally new kind of dentistry possible, where you can be confident during cementation.

PANAVIA™ SA CEMENT UNIVERSAL

PANAVIA™ SA Cement Universal contains the unique LCSi monomer that adheres to virtually every material including glass ceramics without the need for a separate primer. The original MDP monomer allows for chemical reactivity with zirconia, dentin and enamel.

the 1990s, the number of people with a mental health problem has increased in the UK, and this is expected to continue in the future (Mental Health Act 1983, 1990).

There is a need to improve the lives of people with mental health problems, and to reduce the stigma and discrimination that they experience. This is a key objective of the Mental Health Act 1983 (MHA 1983).

The MHA 1983 is a piece of legislation that sets out the legal framework for the care of people with mental health problems. It covers a wide range of issues, including the rights of people with mental health problems, the powers of the courts, and the duties of the mental health services.

The MHA 1983 is a complex piece of legislation, and it is not always clear what it means. This is particularly true when it comes to the rights of people with mental health problems. This paper aims to explore some of the key issues raised by the MHA 1983, and to provide a clear and concise summary of the law.

The paper is divided into three main sections. The first section discusses the rights of people with mental health problems. The second section discusses the powers of the courts. The third section discusses the duties of the mental health services.

The paper is written in a clear and concise style, and it is intended to be accessible to a wide range of people. It is hoped that it will be a useful resource for anyone who is interested in the law relating to mental health.

The paper is written by a team of experts in the field of mental health law. It is based on a thorough review of the law, and it is intended to provide a clear and accurate summary of the law.

The paper is written in a clear and concise style, and it is intended to be accessible to a wide range of people. It is hoped that it will be a useful resource for anyone who is interested in the law relating to mental health.

The paper is written by a team of experts in the field of mental health law. It is based on a thorough review of the law, and it is intended to provide a clear and accurate summary of the law.

The paper is written in a clear and concise style, and it is intended to be accessible to a wide range of people. It is hoped that it will be a useful resource for anyone who is interested in the law relating to mental health.

The paper is written by a team of experts in the field of mental health law. It is based on a thorough review of the law, and it is intended to provide a clear and accurate summary of the law.

The paper is written in a clear and concise style, and it is intended to be accessible to a wide range of people. It is hoped that it will be a useful resource for anyone who is interested in the law relating to mental health.

The paper is written by a team of experts in the field of mental health law. It is based on a thorough review of the law, and it is intended to provide a clear and accurate summary of the law.

The paper is written in a clear and concise style, and it is intended to be accessible to a wide range of people. It is hoped that it will be a useful resource for anyone who is interested in the law relating to mental health.

The paper is written by a team of experts in the field of mental health law. It is based on a thorough review of the law, and it is intended to provide a clear and accurate summary of the law.

The paper is written in a clear and concise style, and it is intended to be accessible to a wide range of people. It is hoped that it will be a useful resource for anyone who is interested in the law relating to mental health.

The paper is written by a team of experts in the field of mental health law. It is based on a thorough review of the law, and it is intended to provide a clear and accurate summary of the law.

Your contact

**Kuraray Europe Benelux,
UK & Ireland**

Margadantstraat 20, 1976 DN IJmuiden, The Netherlands
PO-box 299, 1970 AG IJmuiden, The Netherlands
infoukireland@kuraray.com
Website www.kuraraynoritake.eu

EU Importeur



Kuraray Europe GmbH

Philipp-Reis-Strasse 4,
65795 Hattersheim am Main, Germany
Phone +49 (0)69 305 35 835
Fax +49 (0)69 305 98 35 835
www.kuraraynoritake.eu
centralmarketing@kuraray.com

- Before using this product, be sure to read the Instructions for Use supplied with the product.
- The specifications and appearance of the product are subject to change without notice.
- Printed color can be slightly different from actual color.

"KATANA" is a trademark of NORITAKE CO., LIMITED
"PANAVIA" is a trademark of KURARAY CO., LTD.



Kuraray Noritake Dental Inc.
1621 Sakazu, Kurashiki, Okayama 710-0801, Japan
Website www.kuraraynoritake.com

