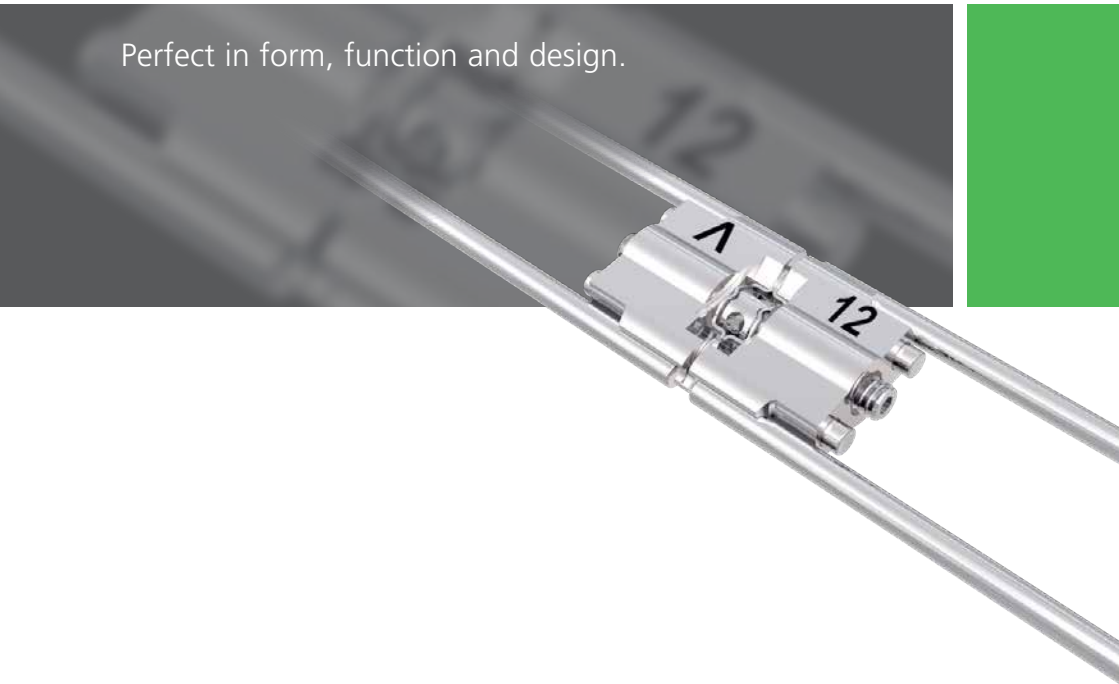


# Expansion screws.

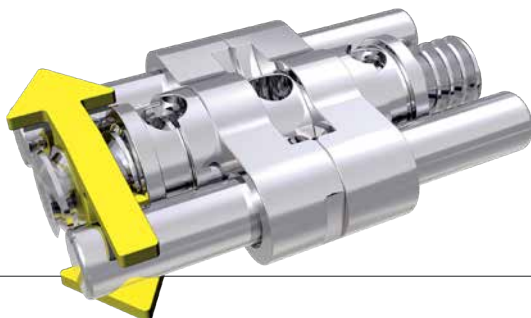
Perfect in form, function and design.



DENTAURUM  
**ONLINE  
SHOP**  
[shop.dentaurum.com](http://shop.dentaurum.com)



## Perfect in form, function and design.

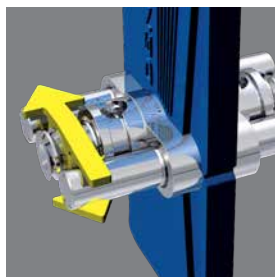


### **A wide range of products.**

Dentaurum's selection of stainless steel expansion screws ranges from standard expansion screws to more complex special expansion screws. Titan hyrax® and rematitan® expansion screws, the biocompatible alternatives in pure titanium, round off this wide selection.

### **Perfect in every detail.**

Dentaurum's expansion screws achieve wide expansion despite their small size. Built-in stops prevent the screws from coming apart. The screws are guaranteed to open evenly and not reverse inadvertently thanks to the friction on the thread, which has been carefully calculated, and an integrated stop mechanism. High precision manufacture and excellent quality ensure that the screw construction is strong and stable. Additional holes in the body ensure optimal retention in the acrylic.



---

## Dentaurum expansion screws

The right solution for every type of treatment.

---

## Forward thrust double plate system acc. to Schaneng

The flexible system.

---

## hyrax®

Special expansion screw for palatal expansion.

---

## hyrax® click

The RPE screw with special feature  
to prevent unwanted reversing.

---

## Titan hyrax®

The world's first RPE screw in titanium.

---

## Variety

The versatile, multi-functional expansion screw.

---

## Variety click

The special expansion screw with special feature  
to prevent unwanted reversing.

---

# Expansion screws

## Standard expansion screws



### Expansion screw Mini

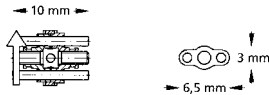
Material: Stainless steel

- with **cone-shaped** expansion screw holder
  - skeleton design
  - holes in body of screws for better retention in acrylic
  - built-in stops prevent screws from coming apart
- With expansion screw key straight, small – standard.

**Indication: for transverse expansion and distalization in the mandible or for especially narrow maxillae**

Maximum expansion	4 x 1/4 turn	Directional arrow	REF	Quantity
6.5 mm	= 0.7 mm	Plastic, white	<b>600-300-10</b>	1 piece
6.5 mm	= 0.7 mm	Plastic, white	<b>600-300-30</b>	10 pieces
6.5 mm	= 0.7 mm	Plastic, white	<b>600-300-60</b>	100 pieces

CE



### Expansion screw Mini

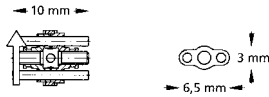
Material: Stainless steel

- with **wide** expansion screw holder
  - skeleton design
  - holes in body of screws for better retention in acrylic
  - built-in stops prevent screws from coming apart
- With expansion screw key straight, small – standard.

**Indication: for transverse expansion and distalization in the mandible or for especially narrow maxillae**

Maximum expansion	4 x 1/4 turn	Directional arrow	REF	Quantity
6.5 mm	= 0.7 mm	Plastic, white	<b>600-320-10</b>	1 piece
6.5 mm	= 0.7 mm	Plastic, white	<b>600-320-30</b>	10 pieces
6.5 mm	= 0.7 mm	Plastic, white	<b>600-320-60</b>	100 pieces

CE



### Expansion screw Medium

Material: Stainless steel

- with **cone-shaped** expansion screw holder
  - skeleton design
  - holes in body of screws for better retention in acrylic
  - built-in stops prevent screws from coming apart
- With expansion screw key straight, small – standard.

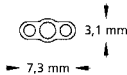
**Indication: for transverse expansion and distalization in maxilla and mandible**

Maximum expansion	4 x 1/4 turn	Directional arrow	REF	Quantity
7.5 mm	= 0.8 mm	Plastic, neon yellow	<b>600-301-10</b>	1 piece
7.5 mm	= 0.8 mm	Plastic, neon yellow	<b>600-301-30</b>	10 pieces
7.5 mm	= 0.8 mm	Plastic, neon yellow	<b>600-301-60</b>	100 pieces



CE

→ 11 mm →



### Expansion screw Medium

Material: Stainless steel

- with **wide** expansion screw holder
  - skeleton design
  - holes in body of screws for better retention in acrylic
  - built-in stops prevent screws from coming apart
- With expansion screw key straight, small – standard.

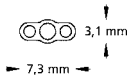
**Indication: for transverse expansion and distalization in maxilla and mandible**

Maximum expansion	4 x 1/4 turn	Directional arrow	REF	Quantity
7.5 mm	= 0.8 mm	Plastic, neon yellow	<b>600-321-10</b>	1 piece
7.5 mm	= 0.8 mm	Plastic, neon yellow	<b>600-321-30</b>	10 pieces
7.5 mm	= 0.8 mm	Plastic, neon yellow	<b>600-321-60</b>	100 pieces



CE

→ 11 mm →



# Expansion screws

## Standard expansion screws



### Expansion screw Maxi

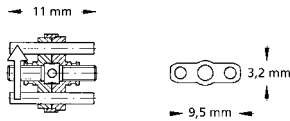
Material: Stainless steel

- with **cone-shaped** expansion screw holder
  - skeleton design
  - holes in body of screws for better retention in acrylic
  - built-in stops prevent screws from coming apart
- With expansion screw key straight, small – standard.

**Indication: for transverse expansion in the maxilla**

Maximum expansion	4 x 1/4 turn	Directional arrow	REF	Quantity
7.5 mm	= 0.8 mm	Plastic, neon yellow	<b>600-302-10</b>	1 piece
7.5 mm	= 0.8 mm	Plastic, neon yellow	<b>600-302-30</b>	10 pieces
7.5 mm	= 0.8 mm	Plastic, neon yellow	<b>600-302-60</b>	100 pieces

CE



### Expansion screw Maxi

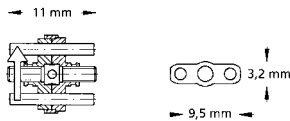
Material: Stainless steel

- with **wide** expansion screw holder
  - skeleton design
  - holes in body of screws for better retention in acrylic
  - built-in stops prevent screws from coming apart
- With expansion screw key straight, small – standard.

**Indication: for transverse expansion in the maxilla**

Maximum expansion	4 x 1/4 turn	Directional arrow	REF	Quantity
7.5 mm	= 0.8 mm	Plastic, neon yellow	<b>600-322-10</b>	1 piece
7.5 mm	= 0.8 mm	Plastic, neon yellow	<b>600-322-30</b>	10 pieces
7.5 mm	= 0.8 mm	Plastic, neon yellow	<b>600-322-60</b>	100 pieces

CE



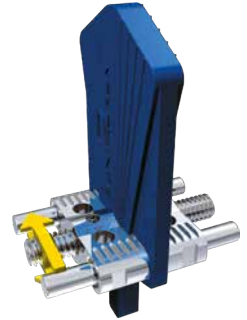
### Expansion screw Magnum

Material: Stainless steel

- with **cone-shaped** expansion screw holder
  - skeleton design
  - version: extra strong, with larger screw body
  - holes in body of screws for better retention in acrylic
  - built-in stops prevent screws from coming apart
- With expansion screw key straight, small – standard.

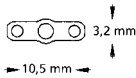
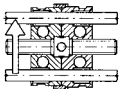
**Indication: for transverse expansion in the maxilla and bimaxillary functional gnatho-orthopedic appliances**

Maximum expansion	4 x 1/4 turn	Directional arrow	REF	Quantity
11.0 mm	= 0.8 mm	Plastic, neon yellow	<b>600-303-10</b>	1 piece
11.0 mm	= 0.8 mm	Plastic, neon yellow	<b>600-303-30</b>	10 pieces
11.0 mm	= 0.8 mm	Plastic, neon yellow	<b>600-303-60</b>	100 pieces



CE

→ 14,5 mm →



### rematitan® expansion screw Medium

Material: Titanium

- with **cone-shaped** expansion screw holder
  - skeleton design
  - holes in body of screws for better retention in acrylic
  - built-in stops prevent screws from coming apart
- With expansion screw key straight, small – standard.

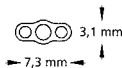
**Indication: for transverse expansion and distalization in maxilla and mandible**

Maximum expansion	4 x 1/4 turn	Directional arrow	REF	Quantity
7.5 mm	= 0.8 mm	Plastic, pearl-blue	<b>600-400-10</b>	1 piece
7.5 mm	= 0.8 mm	Plastic, pearl-blue	<b>600-400-30</b>	10 pieces



CE

→ 11 mm →



# Expansion screws

## Standard expansion screws



### Trapezoidal expansion screw

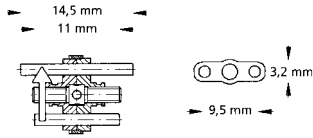
Material: Stainless steel

- with **cone-shaped** expansion screw holder
  - skeleton design
  - holes in body of screws for better retention in acrylic
  - built-in stops prevent screws from coming apart
- With expansion screw key straight, small – standard.

**Indication: for transverse expansion of narrow maxillae and as activation screw for bimaxillary functional gnatho-orthopedic appliances**

Maximum expansion	4 x $\frac{1}{4}$ turn	Directional arrow	REF	Quantity
7.5 mm	= 0.8 mm	Plastic, neon yellow	<b>600-310-30</b>	10 pieces

CE





### Sectional screw Mini

Material: Stainless steel

- with **wide** expansion screw holder
- skeleton design
- guide pins: U-shaped, **straight**

With expansion screw key straight, small – standard.

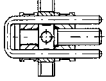
**Indication: for movement of individual teeth**

Maximum expansion	4 x 1/4 turn	Directional arrow	REF	Quantity
4.0 mm	= 0.35 mm	printed, blue-yellow	<b>600-502-10</b>	1 piece
4.0 mm	= 0.35 mm	printed, blue-yellow	<b>600-502-30</b>	10 pieces
4.0 mm	= 0.35 mm	printed, blue-yellow	<b>600-502-60</b>	100 pieces



CE

← 9,5 mm →



### Sectional screw Mini

Material: Stainless steel

- with **wide** expansion screw holder
- skeleton design
- guide pins: U-shaped, **angulated facing down**

With expansion screw key straight, small – standard.

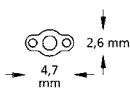
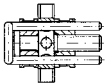
**Indication: for movement of individual teeth**

Maximum expansion	4 x 1/4 turn	Directional arrow	REF	Quantity
4.0 mm	= 0.35 mm	printed, blue-yellow	<b>600-503-10</b>	1 piece
4.0 mm	= 0.35 mm	printed, blue-yellow	<b>600-503-30</b>	10 pieces
4.0 mm	= 0.35 mm	printed, blue-yellow	<b>600-503-60</b>	100 pieces

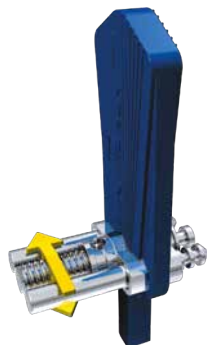


CE

← 9,5 mm →



## Special expansion screws



### Sectional screw Medium

Material: Stainless steel

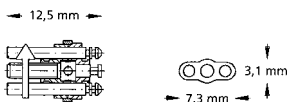
- with **cone-shaped** expansion screw holder
- skeleton design
- guide pins: **straight**, with mushroom head retention
- holes in body of screws for better retention in acrylic
- built-in stops prevent screws from coming apart

With expansion screw key straight, small – standard.

**Indication: for distalization and segmentation of appliances, Y plates**

Maximum expansion	4 x 1/4 turn	Directional arrow	REF	Quantity
6.0 mm	= 0.4 mm	Plastic, neon yellow	<b>600-500-10</b>	1 piece
6.0 mm	= 0.4 mm	Plastic, neon yellow	<b>600-500-30</b>	10 pieces
6.0 mm	= 0.4 mm	Plastic, neon yellow	<b>600-500-60</b>	100 pieces

CE



### Sectional screw Medium

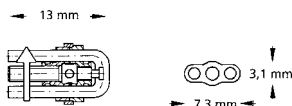
Material: Stainless steel

- with **cone-shaped** expansion screw holder
- skeleton design
- guide pins: U-shaped, **angulated facing down**
- holes in body of screws for better retention in acrylic
- With expansion screw key straight, small – standard.

**Indication: for distalization and segmentation of appliances, protrusion of an anterior segment**

Maximum expansion	4 x 1/4 turn	Directional arrow	REF	Quantity
6.0 mm	= 0.4 mm	Plastic, neon yellow	<b>600-501-10</b>	1 piece
6.0 mm	= 0.4 mm	Plastic, neon yellow	<b>600-501-30</b>	10 pieces
6.0 mm	= 0.4 mm	Plastic, neon yellow	<b>600-501-60</b>	100 pieces

CE



### Retraction screw Extra Mini

Material: Stainless steel

- with **cone-shaped** expansion screw holder
- screw body: closed
- guide pins: U-shaped, straight

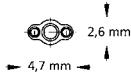
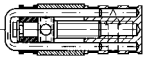
With expansion screw key straight, small – standard.

**Indication: for space closing and movement of individual teeth**

Maximum retraction	4 x 1/4 turn	Directional arrow	REF	Quantity
3.0 mm	= 0.4 mm	printed, blue-yellow	<b>600-602-30</b>	10 pieces

CE

← 13,5 mm →



### Retraction screw Mini

Material: Stainless steel

- with **cone-shaped** expansion screw holder
- screw body: closed
- guide pins: U-shaped, straight

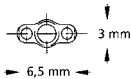
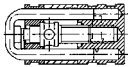
With expansion screw key straight, small – standard.

**Indication: for space closing and movement of individual teeth**

Maximum retraction	4 x 1/4 turn	Directional arrow	REF	Quantity
2.5 mm	= 0.4 mm	printed, blue-yellow	<b>600-601-30</b>	10 pieces

CE

← 13 mm →



# Expansion screws

## Special expansion screws



### Retraction screw Medium

Material: Stainless steel

- with **cone-shaped** expansion screw holder
- screw body: closed
- guide pins: U-shaped, straight

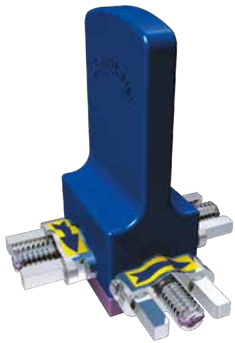
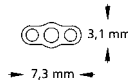
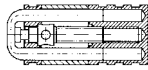
With expansion screw key straight, small – standard.

**Indication: for space closing and movement of individual teeth**

Maximum retraction	4 x 1/4 turn	Directional arrow	REF	Quantity
4.5 mm	= 0.4 mm	printed, blue-yellow	<b>600-600-30</b>	10 pieces

CE

← 17 mm →



### Three dimensional screw acc. to Bertoni – three movements (Type A)

Material: Stainless steel

- strengthened guides
- three independently controlled movements
- same total expansion per segment

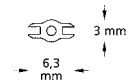
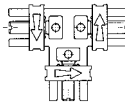
With expansion screw key straight, small – standard.

**Indication: for combined transverse and protrusion movements with Y plates**

Maximum expansion	4 x 1/4 turn	Directional arrow	REF	Quantity
4.0 mm/segment	= 0.35 mm/segment	printed, blue-yellow	<b>602-605-10</b>	1 piece

CE

← 16 mm →



### Three dimensional screw acc. to Bertoni – two movements (Type B)

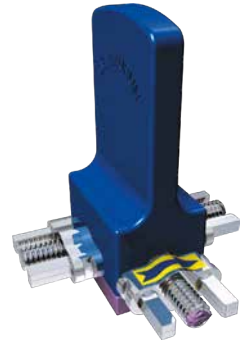
Material: Stainless steel

- strengthened guides
- two independently controlled movements (symmetrical transverse expansion)
- same total expansion per segment

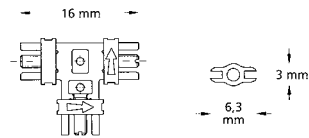
With expansion screw key straight, small – standard.

**Indication: for combined transverse and protrusion movements with Y plates**

Maximum expansion	4 x 1/4 turn	Directional arrow	REF	Quantity
4.0 mm/segment	= 0.35 mm/segment	printed, blue-yellow	<b>602-606-10</b>	1 piece



CE



### Three dimensional screw acc. to Steiner

Material: Stainless steel

- strengthened guides
- individually adjustable middle bar for adapting to different palatal vault curvatures
- two independently controlled movements (symmetrical transverse expansion)
- same total expansion per segment

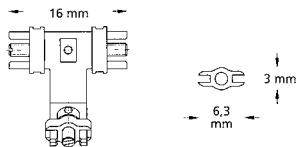
With expansion screw key straight, small – standard.

**Indication: for combined transverse and protrusion movements with Y plates**

Maximum expansion	4 x 1/4 turn	Directional arrow	REF	Quantity
4.0 mm/segment	= 0.35 mm/segment	printed, blue-yellow	<b>602-604-10</b>	1 piece



CE



# Expansion screws

## Special expansion screws



### Fan-type expansion screw

Material: Stainless steel

- with **wide** expansion screw holder
- plate sections are opened fanwise

With expansion screw key straight, small – standard.

**Indication: for maxillary anterior or posterior expansion**

Maximum expansion	4 x 1/4 turn	Directional arrow	REF	Quantity
7.0 mm	= 0.8 mm	printed, blue-yellow	<b>606-600-00</b>	1 piece
7.0 mm	= 0.8 mm	printed, blue-yellow	<b>606-600-30</b>	10 pieces

CE

← 12 mm →



### Mandibular bow screw acc. to Müller

Material: Stainless steel

- with **cone-shaped** expansion screw holder
- minimal fan-type opening of the arch screw, according to the anterior arch

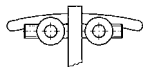
With expansion screw key straight, small – standard.

**Indication: for transverse expansion of the mandibular anterior arch**

Maximum expansion	4 x 1/4 turn	Directional arrow	REF	Quantity
5.0 mm	= 0.8 mm	Plastic, neon yellow	<b>606-701-00</b>	1 piece
5.0 mm	= 0.8 mm	Plastic, neon yellow	<b>606-701-30</b>	10 pieces

CE

← 20 mm →



### Flexible forward thrust double plate system acc. to Schaneng

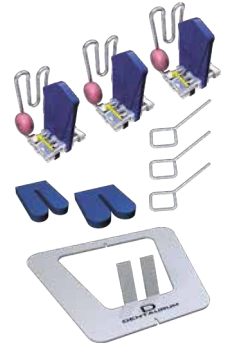
Material: Stainless steel

- flexibility of the intermaxillary element
- screws with guide ridge for forward thrust double plate. Double loop, wax coated

With expansion screw key straight, small – standard.

**Indication: for treatment of Angle Class II/1 (distocclusion), for advancement of the mandible**

REF 600-000-00	1 assortment
CE	Contents:
3 x Screws with guide ridge for forward thrust double plate	REF 600-001-00
1 x Adapter, narrow	REF 600-003-00
1 x Adapter, wide	REF 600-004-00
1 x Locating template	REF 600-005-00



### Guide ridge for flexible forward thrust double plate system acc. to Schaneng

With double loop, wax coated.

Material: stainless steel

Length of guide ridge: 14.0 mm

Version	REF	Quantity	REF	Quantity
with palatal expansion screw	600-001-00	1 piece	600-001-30	10 pieces
without palatal expansion screw	600-002-00	1 piece	600-002-30	10 pieces

CE



### Guide ridge adapter for flexible forward thrust double plate system acc. to Schaneng

To produce the diagonal level in the mandibular.

Adapter	Width	REF	Quantity
narrow	14.0 mm	600-003-00	10 pieces
wide	18.0 mm	600-004-00	10 pieces



### Locating template acc. to Schaneng

The locating template supplied with the system ensures that the guide ridge slides properly on the lingual plate at a 60° angle.

Material: stainless steel

REF 600-005-00	1 piece
----------------	---------



# Expansion screws

## Special expansion screws



### Expansion screw for split activator

Material: Stainless steel

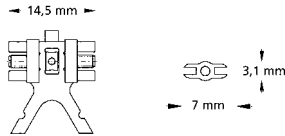
- with **cone-shaped** expansion screw holder
- strengthened guides

With expansion screw key straight, small – standard.

**Indication: for separate expansion of maxilla and mandible**

Maximum expansion	4 x 1/4 turn	Directional arrow	REF	Quantity
7.0 mm	= 0.8 mm	printed, blue-yellow	<b>600-610-00</b>	1 piece
7.0 mm	= 0.8 mm	printed, blue-yellow	<b>600-610-30</b>	10 pieces

CE



### Expansion screw for progenesis activator acc. to Weise

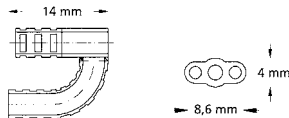
Material: Stainless steel

- without expansion screw holder
  - for fabricating horizontally split activators, which allow connection and shifting of both split planes
  - stable connection of the maxillary plate with the mandibular plate using a strong U-shaped bar
- With expansion screw key straight, small – standard.

**Indication: for the treatment of Angle Class III (progenesis), for distal shifting of the mandible**

Maximum expansion	4 x 1/4 turn	Directional arrow	REF	Quantity
5.0 mm	= 0.9 mm	printed, blue-yellow	<b>603-000-00</b>	1 piece

CE





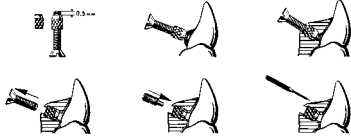
### Piston spring screws assortment

Material: Stainless steel

- delicate design
- constant, elastic and easily controllable pressure on the tooth to be moved
- a protrusion of up to 7 mm can be attained according to the progress of treatment using three different lengths of screws (4 / 6 / 8 mm)

**Indication: for movement of individual teeth**

4 x 1/4 turn = 0.35 mm



REF 609-500-00	1 assortment
<b>CE</b>	
<b>Contents:</b>	
10 x Piston spring screws, length 4 mm	REF 609-004-00
10 x Piston spring screws, length 6 mm	REF 609-006-00
10 x Piston spring screws, length 8 mm	REF 609-008-00
10 x Positioning screws	REF 609-100-00
10 x Serrated housing nuts	REF 609-200-30
1 x Reamer	REF 609-300-00
1 x Screwdriver	REF 609-400-00



### Piston spring screw

Material: Stainless steel

- delicate design
- constant, elastic and easily controllable pressure on the tooth to be moved

**Indication: for movement of individual teeth**

Length	4 x 1/4 turn	REF	Quantity
4.0 mm	= 0.35 mm	<b>609-004-00</b>	10 pieces
6.0 mm	= 0.35 mm	<b>609-006-00</b>	10 pieces
8.0 mm	= 0.35 mm	<b>609-008-00</b>	10 pieces



**CE**

### Positioning screw

**For piston spring screw.**

To position the piston spring screw into the acrylic.

Material: stainless steel

Length	REF	Quantity
12.0 mm	<b>609-100-00</b>	10 pieces



### Serrated housing nut

**For piston spring screw.**

To position into acrylic or to weld onto wire elements.

Material: stainless steel

Length	REF	Quantity
3.0 mm	<b>609-200-30</b>	10 pieces



**CE**

# Expansion screws

## Special expansion screws



### Reamer

For piston spring screw.

Material: stainless steel

REF 609-300-00	1 piece
----------------	---------



### Screwdriver

For piston spring screw.

To activate the piston spring screws.

Material: stainless steel

REF 609-400-00	1 piece
----------------	---------

### Variety click Mini – 8

**Monoguided special expansion screw with click feature to prevent unwanted reversing. Primarily for treatment of malocclusions in the mandible using fixed appliances, e.g. for distalization, mesialization or for space closure by moving individual teeth. Also for early palatal expansion.**

- optimal screw locking during the active treatment phase
  - small dimensions with maximum expansion
  - reliable activation/deactivation of the screw with clearly perceptible click after a  $\frac{1}{4}$  turn
  - break resistant retention legs and stable guidance throughout the entire expansion
  - permanently laser marked arrow on the body of the screw indicates the opening direction and max. expansion
- Pack (1 piece) with 1 safety key, pack (10 pieces) with 10 safety keys.

Assembly dimension: 12.9 mm

Screw body: 9.6 mm

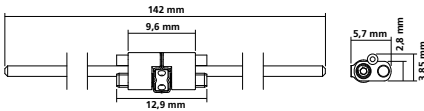
Maximum expansion: 8.0 mm

4 x  $\frac{1}{4}$  turn = 0.8 mm

Material: stainless steel

Retention legs	REF	Quantity	REF	Quantity
without	602-836-12	1 piece	602-836-32	10 pieces
straight	602-836-10	1 piece	602-836-30	10 pieces

CE 0483



**NEW**

### Variety click SP (small palate) Mini – 8

**Monoguided special expansion screw with click feature to prevent unwanted reversing. For the fixed appliance technique. Can be widely used in the upper and lower jaw, for distalization, mesialization of posterior teeth, or for space closure by moving individual teeth. Also for early palatal expansion.**

- optimal screw locking during the active treatment phase
  - especially suitable for very narrow jaws
  - retention legs can be bent very close to the screw body
  - small dimensions with maximum expansion
  - reliable activation/deactivation of the screw with clearly perceptible click after a  $\frac{1}{4}$  turn
  - break resistant retention legs and stable guidance throughout the entire expansion
  - permanently laser marked arrow on the body of the screw indicates the opening direction and max. expansion
- Pack (1 piece) with 1 safety key, pack (10 pieces) with 10 safety keys.

Assembly dimension: 12.9 mm

Screw body: 9.6 mm

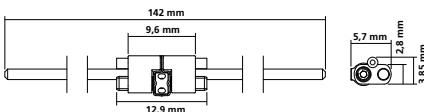
Maximum expansion: 8.0 mm

4 x  $\frac{1}{4}$  turn = 0.8 mm

Material: stainless steel

Retention legs	REF	Quantity	REF	Quantity
without	602-838-12	1 piece	602-838-32	10 pieces
straight	602-838-10	1 piece	602-838-30	10 pieces

CE 0483



**NEW**

# Expansion screws

## Variety expansion screws



### Variety click Maxi – 12

**Monoguided special expansion screw with click feature to prevent unwanted reversing. Primarily for treatment of malocclusions in the mandible using fixed appliances, e.g. for distalization, mesialization or for space closure by moving individual teeth. Also for early palatal expansion.**

- optimal screw locking during the active treatment phase
- small dimensions with maximum expansion
- reliable activation/deactivation of the screw with clearly perceptible click after a  $\frac{1}{4}$  turn
- break resistant retention legs and stable guidance throughout the entire expansion
- permanently laser marked arrow on the body of the screw indicates the opening direction and max. expansion

Pack (1 piece) with 1 safety key, pack (10 pieces) with 10 safety keys.

Assembly dimension: 17.2 mm

Screw body: 9.6 mm

Maximum expansion: 12.0 mm

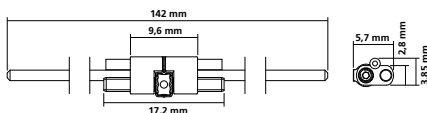
$4 \times \frac{1}{4}$  turn = 0.8 mm

Material: stainless steel

**NEW**

Retention legs	REF	Quantity	REF	Quantity
without	<b>602-837-12</b>	1 piece	<b>602-837-32</b>	10 pieces
straight	<b>602-837-10</b>	1 piece	<b>602-837-30</b>	10 pieces

CE 0483



### Variety click SP (small palate) Maxi – 12

**Monoguided special expansion screw with click feature to prevent unwanted reversing. For treatment of malocclusions in the mandible using fixed appliances, e.g. for distalization, mesialization or for space closure by moving individual teeth. Also for early palatal expansion.**

- optimal screw locking during the active treatment phase
- especially suitable for very narrow jaws
- retention legs can be bent very close to the screw body
- small dimensions with maximum expansion
- reliable activation/deactivation of the screw with clearly perceptible click after a  $\frac{1}{4}$  turn
- break resistant retention legs and stable guidance throughout the entire expansion
- permanently laser marked arrow on the body of the screw indicates the opening direction and max. expansion

Pack (1 piece) with 1 safety key, pack (10 pieces) with 10 safety keys.

Assembly dimension: 17.2 mm

Screw body: 9.6 mm

Maximum expansion: 12.0 mm

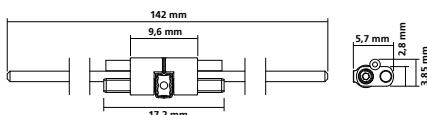
$4 \times \frac{1}{4}$  turn = 0.8 mm

Material: stainless steel

**NEW**

Retention legs	REF	Quantity	REF	Quantity
without	<b>602-839-12</b>	1 piece	<b>602-839-32</b>	10 pieces
straight	<b>602-839-10</b>	1 piece	<b>602-839-30</b>	10 pieces

CE 0483



### Variety Mini – 8

**Monoguided special expansion screw. Primarily for treatment of malocclusions in the mandible using fixed appliances, e.g. for distalization, mesialization or for space closure by moving individual teeth. Also for early palatal expansion.**

- small dimensions with maximum expansion
- break resistant retention legs and stable guidance throughout the entire expansion
- the integrated spindle friction prevents unwanted reversing
- permanently laser marked arrow on the body of the screw indicates the opening direction and max. expansion
- screw can be tied down once desired expansion has been reached

Pack (1 piece) with 1 safety key, pack (10 pieces) with 10 safety keys.

Assembly dimension: 12.9 mm

Screw body: 9.6 mm

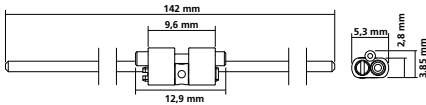
Maximum expansion: 8.0 mm

4 x 1/4 turn = 0.8 mm

Material: stainless steel

Retention legs	REF	Quantity	REF	Quantity
without	602-815-12	1 piece	602-815-32	10 pieces
straight	602-815-10	1 piece	602-815-30	10 pieces

CE 0483



**NEW**

### Variety SP (small palate) Mini – 8

**Monoguided special expansion screw. For treatment of malocclusions in the mandible using fixed appliances, e.g. for distalization, mesialization or for space closure by moving individual teeth. Also for early palatal expansion.**

- especially suitable for very narrow jaws
- retention legs can be bent very close to the screw body
- small dimensions with maximum expansion
- break resistant retention legs and stable guidance throughout the entire expansion
- the integrated spindle friction prevents unwanted reversing
- permanently laser marked arrow on the body of the screw indicates the opening direction and max. expansion
- screw can be tied down once desired expansion has been reached

Pack (1 piece) with 1 safety key, pack (10 pieces) with 10 safety keys.

Assembly dimension: 12.9 mm

Screw body: 9.6 mm

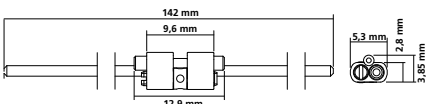
Maximum expansion: 8.0 mm

4 x 1/4 turn = 0.8 mm

Material: stainless steel

Retention legs	REF	Quantity	REF	Quantity
without	602-819-12	1 piece	602-819-32	10 pieces
straight	602-819-10	1 piece	602-819-30	10 pieces

CE 0483



**NEW**

# Expansion screws

## Variety expansion screws



### Variety Maxi – 12

**Monoguided special expansion screw. Primarily for treatment of malocclusions in the mandible using fixed appliances, e.g. for distalization, mesialization or for space closure by moving individual teeth. Also for early palatal expansion.**

- small dimensions with maximum expansion
  - break resistant retention legs and stable guidance throughout the entire expansion
  - the integrated spindle friction prevents unwanted reversing
  - permanently laser marked arrow on the body of the screw indicates the opening direction and max. expansion
  - screw can be tied down once desired expansion has been reached
- Pack (1 piece) with 1 safety key, pack (10 pieces) with 10 safety keys.

Assembly dimension: 14.9 mm

Screw body: 9.6 mm

Maximum expansion: 12.0 mm

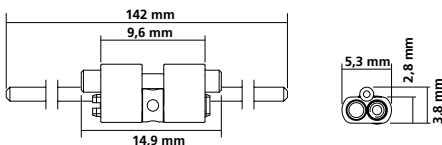
4 x 1/4 turn = 0.8 mm

Material: stainless steel

**NEW**

Retention legs	REF	Quantity	REF	Quantity
without	602-806-12	1 piece	602-806-32	10 pieces
straight	602-806-10	1 piece	602-806-30	10 pieces

CE 0483



### Variety SP (small palate) Maxi – 12

**Monoguided special expansion screw. For treatment of malocclusions in the mandible using fixed appliances, e.g. for distalization, mesialization or for space closure by moving individual teeth. Also for early palatal expansion.**

- especially suitable for very narrow jaws
- retention legs can be bent very close to the screw body
- small dimensions with maximum expansion
- break resistant retention legs and stable guidance throughout the entire expansion
- the integrated spindle friction prevents unwanted reversing
- permanently laser marked arrow on the body of the screw indicates the opening direction
- screw can be tied down once desired expansion has been reached

Pack (1 piece) with 1 safety key, pack (10 pieces) with 10 safety keys.

Assembly dimension: 14.9 mm

Screw body: 9.6 mm

Maximum expansion: 12.0 mm

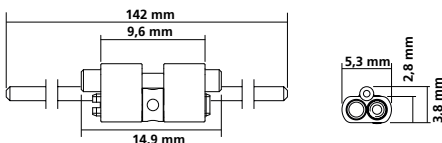
4 x 1/4 turn = 0.8 mm

Material: stainless steel

**NEW**

Retention legs	REF	Quantity	REF	Quantity
without	602-809-12	1 piece	602-809-32	10 pieces
straight	602-809-10	1 piece	602-809-30	10 pieces

CE 0483



### Titan hyrax® Maxi – 12

#### RPE screw of titanium

#### For rapid palatal expansion by means of fixed appliances.

The screw is anchored to the teeth using cast titanium and laser-welded cap splints or alternatively using acrylic cap splints fabricated from Orthocryl® acrylic.

Pack (1 piece) with 1 safety key, pack (10 pieces) with 10 safety keys.

Screw body: 14.4 mm

Maximum expansion: 12.0 mm

4 x 1/4 turn = 0.8 mm

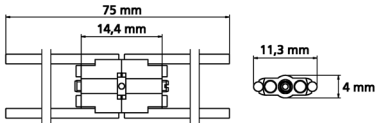
Material: titanium



Retention legs	REF	Quantity	REF	Quantity
without	602-810-12	1 piece	602-810-32	10 pieces
straight	602-810-10	1 piece	602-810-30	10 pieces

**NEW**

CE 0483



### rematitan® straight wire

Titanium grade 1

Norm: DIN 17850

For laser welding.

Recommended as reinforcing wire for fixed titanium RPE appliances (Titan hyrax® Maxi – 12).

ø	Length	REF	Quantity
1.00 mm / 39	each 100 mm	528-041-00	10 pieces
1.20 mm / 47	each 100 mm	528-042-00	10 pieces

CE 0483



**DENTAURUM**  
**ONLINE SHOP**  
shop.dentaurum.com



## RPE screws



### hyrax® click Mini – 7

**RPE screw with click feature to prevent unwanted reversing**

**For effective and reliable rapid palatal expansion by means of fixed appliances.**

- optimal screw locking during the active treatment phase
- built-in stops prevent the screws from coming apart once maximum expansion has been obtained
- reliable activation/deactivation of the screw with clearly perceptible click after a  $\frac{1}{4}$  turn
- no accidental reversing when pulling out safety key during activation
- minimal dimensions with maximum expansion range
- permanently laser marked arrow on the body of the screw indicates the opening direction and max. expansion

Pack (1 piece) with 1 safety key, pack (10 pieces) with 10 safety keys.

Screw body: 9.8 mm

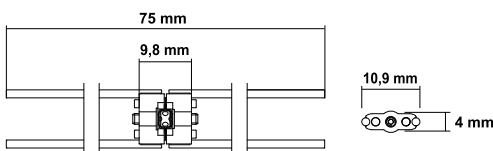
Maximum expansion: 7.0 mm

4 x  $\frac{1}{4}$  turn = 0.8 mm

Material: stainless steel

Retention legs	REF	Quantity	REF	Quantity
without	602-830-12	1 piece	602-830-32	10 pieces
straight	602-830-10	1 piece	602-830-30	10 pieces
angulated	602-831-10	1 piece	602-831-30	10 pieces

CE 0483



### hyrax® click Medium – 10

**RPE screw with click feature to prevent unwanted reversing**

**For effective and reliable rapid palatal expansion by means of fixed appliances.**

- optimal screw locking during the active treatment phase
- built-in stops prevent the screws from coming apart once maximum expansion has been obtained
- reliable activation/deactivation of the screw with clearly perceptible click after a  $\frac{1}{4}$  turn
- no accidental reversing when pulling out safety key during activation
- minimal dimensions with maximum expansion range
- permanently laser marked arrow on the body of the screw indicates the opening direction and max. expansion

Pack (1 piece) with 1 safety key, pack (10 pieces) with 10 safety keys.

Screw body: 12.8 mm

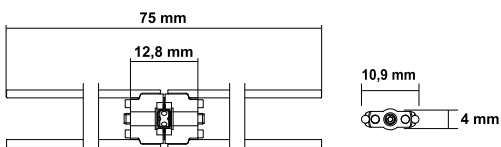
Maximum expansion: 10.0 mm

4 x  $\frac{1}{4}$  turn = 0.8 mm

Material: stainless steel

Retention legs	REF	Quantity	REF	Quantity
without	602-832-12	1 piece	602-832-32	10 pieces
straight	602-832-10	1 piece	602-832-30	10 pieces
angulated	602-833-10	1 piece	602-833-30	10 pieces

CE 0483





### hyrax® click Maxi – 12

#### RPE screw with click feature to prevent unwanted reversing

#### For effective and reliable rapid palatal expansion by means of fixed appliances.

- optimal screw locking during the active treatment phase
- built-in stops prevent the screws from coming apart once maximum expansion has been obtained
- reliable activation/deactivation of the screw with clearly perceptible click after a  $\frac{1}{4}$  turn
- no accidental reversing when pulling out safety key during activation
- minimal dimensions with maximum expansion range
- permanently laser marked arrow on the body of the screw indicates the opening direction and max. expansion

Pack (1 piece) with 1 safety key, pack (10 pieces) with 10 safety keys.

Screw body: 14.8 mm

Maximum expansion: 12.0 mm

4 x  $\frac{1}{4}$  turn = 0.8 mm

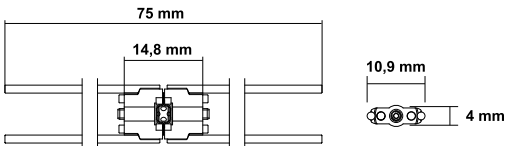
Material: stainless steel



**NEW**

Retention legs	REF	Quantity	REF	Quantity
without	602-834-12	1 piece	602-834-32	10 pieces
straight	602-834-10	1 piece	602-834-30	10 pieces
angulated	602-835-10	1 piece	602-835-30	10 pieces

CE 0483



# Expansion screws

## RPE screws



### hyrax® Mini – 7

#### RPE screw

##### For rapid palatal expansion by means of fixed appliances.

- built-in stops prevent the screws from coming apart once maximum expansion has been obtained
  - small dimensions with maximum expansion
  - break resistant retention legs, stable guidance throughout complete expansion
  - the integrated spindle friction prevents unwanted reversing
  - permanently laser marked arrow on the body of the screw indicates the opening direction and max. expansion
  - screw can be tied down once desired expansion has been reached
- Pack (1 piece) with 1 safety key, pack (10 pieces) with 10 safety keys.

Screw body: 9.4 mm

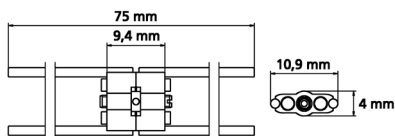
Maximum expansion: 7.0 mm

4 x 1/4 turn = 0.8 mm

Material: stainless steel

Retention legs	REF	Quantity	REF	Quantity
without	602-800-12	1 piece	602-800-32	10 pieces
straight	602-800-10	1 piece	602-800-30	10 pieces
angulated	602-801-10	1 piece	602-801-30	10 pieces

CE 0483



### hyrax® Medium – 10

#### RPE screw

##### For rapid palatal expansion by means of fixed appliances.

- built-in stops prevent the screws from coming apart once maximum expansion has been obtained
  - small dimensions with maximum expansion
  - break resistant retention legs, stable guidance throughout complete expansion
  - offset body for earliest possible angling of the retention legs
  - the integrated spindle friction prevents unwanted reversing
  - permanently laser marked arrow on the body of the screw indicates the opening direction and max. expansion
  - screw can be tied down once desired expansion has been reached
- Pack (1 piece) with 1 safety key, pack (10 pieces) with 10 safety keys.

Screw body: 12.4 mm

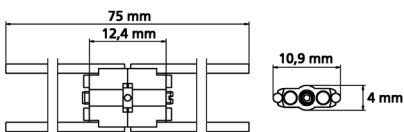
Maximum expansion: 10.0 mm

4 x 1/4 turn = 0.8 mm

Material: stainless steel

Retention legs	REF	Quantity	REF	Quantity
without	602-808-12	1 piece	602-808-32	10 pieces
straight	602-808-10	1 piece	602-808-30	10 pieces
angulated	602-840-10	1 piece	602-840-30	10 pieces

CE 0483



**NEW**

### hyrax® Maxi – 12

#### RPE screw

#### For rapid palatal expansion by means of fixed appliances.

- the retention legs can be angled near to the screw body
  - built-in stops prevent the screws from coming apart once maximum expansion has been obtained
  - break resistant retention legs, stable guidance throughout complete expansion
  - offset body for earliest possible angling of the retention legs
  - the integrated spindle friction prevents unwanted reversing
  - permanently laser marked arrow on the body of the screw indicates the opening direction and max. expansion
  - screw can be tied down once desired expansion has been reached
- Pack (1 piece) with 1 safety key, pack (10 pieces) with 10 safety keys.

Screw body: 14.4 mm

Maximum expansion: 12.0 mm

4 x 1/4 turn = 0.8 mm

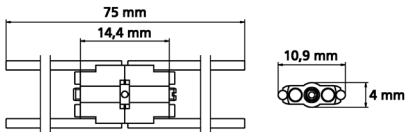
Material: stainless steel



**NEW**

Retention legs	REF	Quantity	REF	Quantity
without	602-811-12	1 piece	602-811-32	10 pieces
straight	602-811-10	1 piece	602-811-30	10 pieces
angulated	602-812-10	1 piece	602-812-30	10 pieces

CE 0483



# Expansion screws

## Accessories



### Arrow to indicate the opening direction

For expansion screws.

Color	REF	Quantity
yellow	611-130-00	50 pieces
white	611-131-00	50 pieces
pearl-blue	611-132-00	50 pieces

CE



### Universal bending key

Easy bending of the retention legs of all Hyrax® and Variety screws without using any additional pliers (leverage principle).  
Material: stainless steel

REF 611-122-00	1 piece
----------------	---------



### Safety key

Can be used with all Dentaurum Hyrax® and Variety screws.  
For safe intra-oral activation of the expansion screws in fixed appliances.

REF 611-120-01	10 pieces
----------------	-----------

CE



### Expansion screw key straight, small – standard

Can be used with all Dentaurum expansion screws.  
To activate all expansion screws in removable appliances (Outside of the mouth).  
Material: stainless steel

REF 611-115-00	1 piece
REF 611-115-30	10 pieces
REF 611-115-60	100 pieces



### Expansion screw key large – with elongated handle

Can be used with all Dentaurum expansion screws.  
To activate all expansion screws in removable appliances (Outside of the mouth).  
Material: stainless steel

REF 611-116-00	1 piece
----------------	---------



### Expansion screw sample kit

Includes a selection of expansion screws from Dentaurum's large range of expansion screws.  
Filled with 27 expansion screws that are also available separately, 2 expansion screw keys and 1 universal bending key. **1 set = 30 pieces.**

REF 612-000-00	1 set
----------------	-------

CE 0483

### Wedge gauge

For checking the gap width on palatal expanders.

REF 043-720-00

1 piece

