



ORTHODONTICS

From buccal tubes to pliers, Herbst to ceramic brackets, we offer an extensive range for both the technician and orthodontist.

IN THIS SECTION:

Acrylic	312
Acrylic Accessories	316
Adhesive	318
Aftercare	319
Anchorage System	320
Anti Snoring/Bruxism Devices	320
Archiving Scanner	323
Bands	323
Brackets	324
Buccal Tubes	325
Bunsen Burners	325
Bunsen Burner Refillable Devices	326
Bunsen Burner Accessories	327
Class II Devices	328
Elastics	329
Dentaurum Expansion Screws	330
Expansion Screw Accessories	334
Forming Materials	335
Impression Material	337
Miscellaneous	337
Orthodontic Stone	341
Pliers	342
Polishing	344
Separators	345
Solder/Flux	345
Tubing	346
Wax	347
Wire	347
Wire Clasps	351

Acrylic



CENTRI™ OPACRYL

Proudly made by WHW, this excellent quality cold cure orthodontic resin does not run or slump and offers exceptional value for money. The material was developed primarily for the salt and pepper technique and has great strength and clarity.

Code	Description	Size
01OP1	Opacryl Powder	1kg
01OP3	Opacryl Powder	3kg
01OL1R	Opacryl Liquid Rose	1ltr
01OL1C	Opacryl Liquid Clear	1ltr
01OL50R	Opacryl Liquid Rose	500ml
01OL50C	Opacryl Liquid Clear	500ml
01OSPR	Opacryl Powder & Rose Liquid Kit	1kg & 500ml
01OSPC	Opacryl Powder & Clear Liquid Kit	1kg & 500ml

CENTRI™ OPACRYL COLOUR LIQUIDS

Extensive range of colours that can be used as is or with our Centri™ Opacryl clear liquid to create a more translucent effect.

Code	Description	Size
01OCLBK	Opacryl Colour Black	125ml
01OCLBL	Opacryl Colour Blue	125ml
01OCLGR	Opacryl Colour Green	125ml
01OCLOR	Opacryl Colour Orange	125ml
01OCLRD	Opacryl Colour Red	125ml
01OCLRB	Opacryl Colour Rubine	125ml
01OCLTQ	Opacryl Colour Turquoise	125ml
01OCLVT	Opacryl Colour Violet	125ml
01OCLYW	Opacryl Colour Yellow	125ml

Acrylic



ORTHOCRYL® POWDER

Clear cold curing orthodontic resin especially formulated for the salt and pepper technique.

Code: 38160-112-00 Size: 1kg



ORTHOCRYL® EQ POWDER

Clear cold curing orthodontic resin especially formulated for the doughing technique.

Code: 38160-300-00 Size: 1kg

ORTHOCRYL® LIQUID

Standard cold curing liquids for both the Orthocryl® and Orthocryl® EQ powders.

Code	Description	Size
38161-100-00	Orthocryl® Liquid Clear	500ml
38161-300-00	Orthocryl® Liquid Transparent Pink	500ml
38161-150-00	Orthocryl® Liquid Clear	1ltr
38161-350-00	Orthocryl® Liquid Transparent Pink	1ltr



ORTHOCRYL® COLOUR LIQUIDS

Standard and neon cold curing liquids for both the Orthocryl® and Orthocryl® EQ powders.

Code	Description	Size
38161-127-00	Orthocryl® Liquid Red	250ml
38161-128-00	Orthocryl® Liquid Green	250ml
38161-129-00	Orthocryl® Liquid Blue	250ml
38161-130-00	Orthocryl® Liquid Yellow	250ml
38161-131-00	Orthocryl® Liquid Turquoise	250ml
38161-132-00	Orthocryl® Liquid Pink	250ml
38161-133-00	Orthocryl® Liquid Emerald Green	250ml
38161-134-00	Orthocryl® Liquid Violet	250ml



Acrylic

ORTHOCRYL® COLOUR LIQUIDS

Code	Description	Size
38161-135-00	Orthocryl® Liquid Neon Yellow	250ml
38161-136-00	Orthocryl® Liquid Neon Orange	250ml
38161-137-00	Orthocryl® Liquid Neon Pink	250ml
38161-138-00	Orthocryl® Liquid Neon Green	250ml



ORTHOCRYL® COLOUR CONCENTRATE

Colour effects for tinting clear Orthocryl® liquid.

Code	Description	Size
38161-620-00	Orthocryl® Concentrate Red	100ml
38161-622-00	Orthocryl® Concentrate Blue	100ml



ORTHOCRYL® BLACK & WHITE

The Orthocryl® black & white powder technique opens up a world of new ideas and creative possibilities for orthodontic appliances.

Code	Description	Size
38160-011-00	Orthocryl® Powder Black	200g
38160-012-00	Orthocryl® Powder White	200g
38160-013-00	Orthocryl® Powder Black	1kg
38160-014-00	Orthocryl® Powder White	1kg
38161-100-00	Orthocryl® Liquid Clear	500ml
38161-150-00	Orthocryl® Liquid Clear	1ltr



Acrylic

ORTHOCRYL® LC

Orthocryl® LC acrylic offers undeniable advantages - it's light-curable, time-saving and extremely easy to use. Orthocryl® LC has been especially designed to meet the requirements for fabricating orthodontic appliances but it can also be used to make drill templates for implantology, bite plates and anti-snoring devices. The material is completely biocompatible and odourless since it does not contain any harmful methyl methacrylate (MMA) or dibenzoyl peroxide.

ORTHOCRYL® LC STARTER KIT - COLOURS

The comprehensive starter kit includes 6 cartridges in all available colours, an injector for applying the acrylic and 50 cartridge tips in a handy storage case.

Code: 38160-400-10



ORTHOCRYL® LC STARTER KIT - CLEAR

This version of the starter kit includes 6 cartridges of clear, an injector for applying the acrylic and 50 cartridge tips in a handy storage case.

Code: 38160-400-20



Code	Description	Size
38160-401-00	Orthocryl® LC Cartridge Clear	30g
38160-402-00	Orthocryl® LC Cartridge Trans Pink	30g
38160-403-00	Orthocryl® LC Cartridge Red	30g
38160-404-00	Orthocryl® LC Cartridge Blue	30g
38160-405-00	Orthocryl® LC Cartridge Yellow	30g
38160-406-00	Orthocryl® LC Cartridge Green	30g
38160-430-00	Orthocryl® LC Cleaning Fluid	100ml
38160-420-00	Orthocryl® Injector	
38160-421-00	Orthocryl® Injector Tips 50pcs	

ORTHOCRYL® LC BITE PLATE PASTE

Orthocryl® LC clear material in a light resistant pot, the material can be carved and easily adapted, suitable for a variety of uses.

Code: 38160-410-00

Size: 50g



Acrylic Accessories

ORTHOCRYL® DISCO GLITTER

Incredibly good value, this glitter is added to the powder and processed as normal. Add the desired amount to achieve the required lustre.

Code	Description	Size
38161-605-00	Iris	50g
38161-606-00	Red	50g
38161-607-00	Blue	50g
38161-608-00	Silver	50g
38161-609-00	Gold	50g
38161-611-00	Mother of Pearl	50g



MONOMER DISPENSING BOTTLE

Code: 01LDB **Size:** 500ml



NOVEL DESIGN ASSORTMENT

For the ultimate customisation, this kit offers 20 different designs with something for everyone. The starter kit includes 20 of each type plus locating tweezers. Each novel design can be ordered individually, please ask for more information.

Code: 38160-100-00



WHW SPRAY BOTTLE

Both supplied with 2 metal tips of differing widths.

Code	Description	Size
01OSFLS	Liquid	57ml
01OSFPS	Powder	57ml



Acrylic Accessories

LEONE SPRAY BOTTLE

Code	Description	Size
01OSFL	Liquid - supplied with metal tip	50ml
01OSFP	Powder - supplied with metal dosing spout	100ml



DENTAURUM SPRAY BOTTLE

Spray bottle for powder and liquid.



No.	Code	Description	Pack	Size
1	38162-100-00	Bottle only		100ml
2	38162-752-00	Metal tips for liquid dispensing	12pcs	
3	38162-751-00	Metal tip for powder dispensing	1pc	

DISPENSING PIPETTE

Dosing pipette for the Orthocryl® colour concentrates.

Code: 38162-101-00 **Pack:** 10pcs



Adhesive



CONTEC LC SET

- ▶ For adhering metal, ceramic and plastic brackets and buccal tubes
- ▶ Excellent bond strength
- ▶ Easy to dispense adhesive paste with very good stability
- ▶ Cures under all bracket bases (a special primer is needed for plastic brackets)
- ▶ Free of BisGMA, TEGDMA and HEMA

The kit (which should be enough for approximately 800 brackets) contains:

- ▶ 3x syringes CONTEC lc 3g
- ▶ 1x bottle CONTEC lc primer 5ml
- ▶ 2x syringes CONTEC etching gel 2.5ml
- ▶ 6x CONTEC disposable tubes for etching gel
- ▶ 50x CONTEC disposable brushes
- ▶ 1x CONTEC combination instrument
- ▶ 1x CONTEC mixing pad

Code: 38163-110-00

CONTEC LC SYRINGE



2pcs
3g

Contec LC bracket and tube adhesive.

Code: 38163-111-00

CONTEC LC PRIMER



5ml

Primer for metal and ceramic components.

Code: 38163-113-10

CONTEC PLASTICS PRIMER



5ml

Primer for plastic components.

Code: 38163-100-10

CONTEC ETCHING GEL



2pcs
2.5ml

Etching gel for the Contec LC adhesive system.

Code: 38163-115-00

Aftercare

NITRADINE®

Most removable dental appliances are made from porous materials in which opportunistic and pathogenic microorganisms (fungi, bacteria and viruses) infiltrate, attach and form biofilm, a three-dimensional protective matrix in which they build-up. Candida albicans in particular deeply penetrates the pores and cracks of the dental appliance. Also other pathological microorganisms such as Pseudomonas aeruginosa, Streptococcus mutans, Staphylococcus aureus (inc. MRSA) and Herpes simplex can attach to



and colonise the appliance which leads to painful irritation of the oral cavity (denture stomatitis). Elderly, diabetic, transplant and cancer therapy patients wearing contaminated appliances can develop serious systemic infection of the upper airways. Clinical trials have shown that Nitradine® tablets result in a 99.995% bio-film reduction.

Nitradine® contains no bleach and will not discolour retainers or aligners, in fact removing the Candida albicans and bacteria will restore the clarity of the device. Designed to be used once or twice a week alongside an existing hygiene routine.

Code: 01NUT20

Pack: 20pcs

NITRADINE® SHINE

With its "anti-biofilm" formula, Nitradine® Shine has been specially formulated to clean, whiten, refresh and polish removable dental appliances. Designed to be used on a daily basis and should ideally be used in conjunction with Nitradine® Tablets. Nitradine® Shine will not corrode,

discolour or distort the appliance in any way and is ideal for cleaning orthodontic appliances, dentures, bleaching trays, mouthguards and all dental appliances.



Code: 01NS

Size: 45g

ORTHO BRUSH

Orthodontic tooth brush ideal for cleaning interproximal areas, fixed brackets and banded appliances.

Code: 38163-300-00

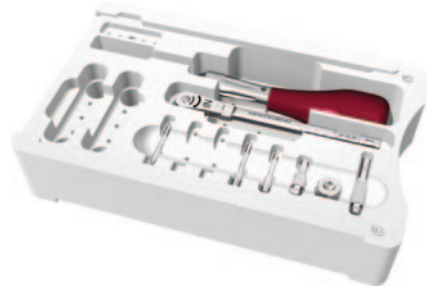
Pack: 10pcs



Anchorage System

TOMAS® ANCHORAGE SYSTEM

tomas® (temporary orthodontic micro anchorage system) is a new concept for temporary skeletal anchorage in orthodontic treatment. The pins are manufactured from Grade 5 titanium implant material and are widely used due to their high biocompatibility.



TOMAS® PIN SD

Thanks to a 22 cross slot in the pinhead, the tomas®-pin SD (Self Drilling) is easy to use like a conventional bracket. The coupling elements are fixed in place using a drop of adhesive. Available in three thread lengths 6mm, 8mm and 10mm.



TOMAS® PIN EP

By integrating the new tomas®-pin EP (Elastic Palatal) and a selection of abutments for direct and indirect coupling into the tomas® system and thereby extending the range of indications to include use in the palate, all requirements for a modern system have been taken into account. Available in three thread lengths 6mm, 8mm and 10mm.



Please contact us for more information.

Anti Snoring/Bruxism Devices

NITEBITE™

A custom fit dental protector for relieving head, neck, facial, joint and tooth pain often associated with TMJ disorder. The unique shape and thin design of NiteBite™ triggers the jaw opening reflex within the freeway space, which relaxes and releases the jaw muscles.

Code: 39NB

Pack: 5pcs



SL SILENSOR CARDS

Refill card for the starter kit, containing protrusion gauge, connectors from sizes 21 - 26mm, holding pins and anchors.

Code: 07SRC SL

Pack: 12pcs

Anti Snoring/Bruxism Devices

DOCSNORENIX® STARTER SET

Snoring is caused from a blockage of the respiratory system during sleep. While sleeping, the tension in the muscles is released which causes the throat to narrow. The respiratory air is forced through the narrowed throat channel and the soft palate begins to vibrate, producing the typical snoring noises. The tongue may fall back into the throat and this might lead to a complete blockage, which can result in the periodical interruption of breathing (apnoea).

DocSnoreNix® is a newly developed and patented SNX-protrusion system according to Dr. Schmitt-Bylandt, which brings the patient's lower jaw into an individually determined protruded position during sleep. By doing so, the throat is widened and the typical danger of blocking is decisively reduced. The strain on the mandibular joint is also significantly reduced using unique super elastic connecting elements between the upper and lower jaw. The delicate design of the spring elements create a comfortable, non-intrusive appliance, which means a greater acceptance and use by the patient.

Code: D4600

DOCSNORENIX® SET

- ▶ 1 x patient set of protrusion springs
- ▶ Thermoforming blanks (2 x Kombiplast 3mm)
- ▶ Lightdon Gel, 20ml transparent

Code: D4601

DOCSNORENIX® PROTRUSION SPRINGS

One patient set of DocSnoreNix® protrusion springs.

Code: D4602

DOCSNORENIX® PLIERS

Specific pliers for the protrusion springs.

Code: D4603

DocSnoreNix® Starter Set Contents

- ▶ Pair of pliers
- ▶ 1 x patient set of protrusion springs
- ▶ Thermoforming blanks (2 x Kombiplast 3mm)
- ▶ Protrusion calibre
- ▶ Lightdon Gel, 20ml transparent
- ▶ Lightdon Bonding, 10ml bottle
- ▶ Ultratrimm medium
- ▶ Accessories
- ▶ Manual



DOCSNORENIX® PROTRUSION CALIBRE

Acts as a template to ensure the correct use of the system.

Code: D4604

LIGHTDON GEL

Light curable transparent gel that bonds to rigid retainer material. 20ml

Code: D3816

Anti Snoring/Bruxism Devices

SLEEPWELL™

The revolutionary Sleepwell™ is the most clinically proven MAS device for snoring and mild to moderate sleep apnoea. Supplied exclusively through WHW, the Sleepwell™ is easy to construct and creates the opportunity for significant additional revenue streams. Offering a 97% success rate with full comfort control, the device is both manageable and not as intrusive as conventional appliances.

Kits include:

- ▶ Upper component (screw mechanism)
- ▶ Lower component (plate)
- ▶ Adjusting key
- ▶ Patient user guide
- ▶ Dentist fitting instructions



Code: SW/KIT

SLEEPWELL™ ACCESSORY KIT

Kit contains: 1 x 50g Centri™ Opacryl powder, 1 x 20ml Centri™ Opacryl clear liquid, 1 x F8 grey polisher, 1 x 40CX80G040 trimming bur, 1 x dark grey Scotch Brite and 2 x 3mm Dreve Kombiplast

Code	Description
SWAK	Dreve Kombiplast - Square
SWAK-120R	Dreve Kombiplast - 120mmø



DREVE KOMBIPLAST DUAL LAMINATE

Dual laminate made from PETG and EVA, the rigid side bonds to acrylic and the soft side provides comfort. With the added benefit when forming there is no need to heat both sides.

Code	Description	Pack	Size
D420017SQ	3mm (1.5mm hard/1.5mm soft)	10pcs	Square
D420017	3mm (1.5mm hard/1.5mm soft)	10pcs	120mmø
D420017S	3mm (1.5mm hard/1.5mm soft)	10pcs	125mmø



Archiving Scanner

DENTAURUM ORTHOX®

The 3D model scanner orthoX® scan and the integrated archiving software orthoX® file offers a simple user interface with a Model Wizard for logical, step-by-step guidance through each stage of adding a base to models and archiving. Patient models are saved in open STL files that enable free data use as well as digital model archiving. The data can also be used for analysing and creating models in the 3D-printing technique. There is also the possibility of utilising digital treatment solutions such as aligner therapy or digitally planned, highly precise indirect bonding techniques.

The intuitive scanning requires only a few simple steps and settings whilst the sophisticated stripe-light projection technology enables a high scanning accuracy of <math><20\mu\text{m}</math> and a scan duration of only 45 seconds per jaw. Thanks to its compact size and design, the scanner is a space-saving desktop solution and the metal housing of the unit is both impact resistant and easy to clean.



Code: 38075-000-00 Size: gkg Dimensions: 360 x 295 x 170mm

Bands

DENTAURUM DENTAFORM® SNAP

Dentaurum dentaform® Snap bands have an especially detailed anatomical shape. This gives an excellent fit and their rolled edges create a perfect edge closure. The bands are manufactured from a rigid material and are especially sturdy, this is the reason for the super snap effect which makes fitting so much easier. The high edge stability prevents unwanted deformation of the band periphery and the roughened interior surface creates optimal band adhesion. dentaform® Snap bands are ideal for extraoral techniques. Available for upper/lower 1st molars.



Bands

DENTAURUM DENTAFORM®

The anatomically shaped Dentaform® bands are manufactured of a more flexible material creating an easy, quick and accurate fit. They are ergonomic due to the high flexibility of the band. Available for upper/lower 1st and 2nd molars.



DENTAURUM STANDARD BANDS

The Standard bands are not unlike Dentaform® Snap in their rigidity, however they have fewer contours that make them universally applicable for both the right and left halves of the arch. Available for upper/lower 1st and 2nd molars and premolars.

WELDING SERVICE

Brackets and buccal tubes can be welded onto the majority of bands in the absolute correct position according to conventional systems or specific requirements, when using the standard or custom prewelding service.

Please contact us for more information.

Brackets

DENTAURUM DISCOVERY® SMART

With a 20% reduction in size over its predecessor, Discovery® Smart is a contemporary, small and incredibly engineered one-piece metal bracket. Its mesial-distal curved slot contour that follows the ideal contour of the dental arch, means each bracket has an individual slot curvature that helps to minimize the friction in the slot and ensures more efficient and precise treatment. The bracket system is available in MBT and Roth.



DENTAURUM EQUILIBRIUM® 2

Equilibrium® 2 is an incredibly good value metal bracket. The patented laser-structured base that creates an ideal bond for each bracket has been adapted and optimised to match the 3D shape and anatomical contour of each tooth. The low in/out values produced by the one-piece design enable ideal force application close to the crown of the tooth. The bracket system is available in MBT, Roth, Ricketts and Standard Edgewise.

Brackets

DENTAURUM DISCOVERY® PEARL

Discovery® Pearl is a complete ceramic bracket system with no irritating metal reinforcements in the slot. It is a genuine one-piece bracket fabricated with the CIM technique (Ceramic Injection Moulding) on state-of-the-art production machinery. In addition, a system of coloured placement aids and the FDI notation on the base facilitate assigning each bracket to the corresponding tooth with ease. The placement aids also ensure simple and exact positioning. With an innovative laser-structured base that guarantees good bonding as well as easy and secure debonding, Discovery® Pearl ensures optimal treatment results and meets the increased aesthetic requirements.



Please contact us for more information.

Buccal Tubes

DENTAURUM ORTHO-CAST M-SERIES

Pliable ball-end hooks and a clear distal notch for easy placement of figure-eight ligatures are just some of the qualities of the Ortho-Cast M-Series buccal tubes. The positioning guide and specially designed placement tweezers allow an easy placement, particularly in the distal region. The trumpeted opening ensures an easy archwire insertion. Available in a range of prescriptions, convertible and non-convertible.



Please contact us for more information.

Bunsen Burners

WITH PILOT LIGHT



WITHOUT PILOT LIGHT



Code	Description
07RBPB	Bottle gas
07RBPN	Natural gas

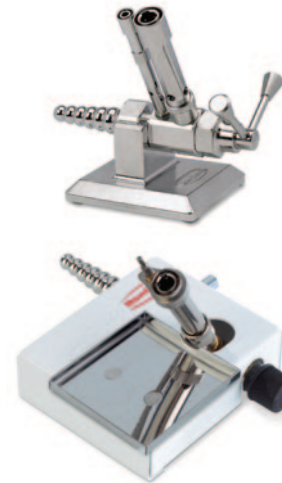
Code	Description
04LBBB	Bottle gas
04LBBN	Natural gas

Bunsen Burners

RENFERT BIJOU

Famous angled Bunsen burner with two riser tubes to adjust the flame intensity.

Code	Description
87R960000	Bottle gas
87R961000	Natural gas



RENFERT SAFETY BURNER ECO

Single tube safety burner with automatic gas shut off if flame is extinguished unintentionally.

Code	Description
87R9340100	Bottle gas
87R9350100	Natural gas

Bunsen Burner Refillable Devices

STRAIGHT HEADED BUNSEN BURNER



Code: 01LBS

TILT HEADED BUNSEN BURNER



Code: 01LBT

GENUINE REKROW MICROTORCH



Code: 05PMT

GENUINE REKROW HOT AIR TORCH



Code: 01TCSHG

Bunsen Burner Accessories

GAS TAPS

Suitable for use with bottle and natural gas, supplied with fittings for natural gas.

For bottle gas users please purchase Ref: 01BGF38 as well.



Code	Description
01CGTD38	Double Gas Tap 3/8"
01CGTS38	Single Gas Tap 3/8"

BUNSEN BURNER HOSE

Flexible rubber hose - supplied per 305mm.



Code: 01BBH

GAS TAP FITTING

Converts the gas tap so that it can be used with bottle gas.



Code: 01BGF38

GAS TAP HOSE

Reinforced hose - supplied per 1,000mm.



Code: 01GTH

GAS TAP HOSE CLIP



Code: 01GTHC

BUTANE REFILL BOTTLE

For use with all refillable heating devices.



Code: 01UBR

Size: 300ml

Class II Devices

DENTAURUM HERBST I SET

The classic retention hinge for welding onto bands. Depending on the experience and the goal of the orthodontist, the Dentaaurum Herbst technique is fit for band or cast techniques. This means maximum flexibility and allows customised application.

The kit contains:

- ▶ 1 x telescopic tube right
- ▶ 1 x telescopic tube left
- ▶ 2 x telescopic rod
- ▶ 4 x hexagon socket screw
- ▶ 4 x F-base



Code: 38607-120-00

DENTAURUM HERBST TS

Evolved version of the standard Herbst system with internal telescopic rods that prevent the hinge from sliding apart.

The kit contains:

- ▶ 1 x telescopic rod right
- ▶ 1 x telescopic rod left
- ▶ 4 x hexagon socket screw
- ▶ 4 x F-base.



Code	Size
38607-126-20	20mm
38607-126-22	22mm
38607-126-24	24mm

Class II Devices

DENTAURUM HERBST IV SET

The modified Herbst bite jumping hinge with ball and socket joint and C-clip fixation for greater lateral movement. This intelligent solution offers a new dimension of lower jaw movement in therapy with Herbst bite jumping hinges. The Herbst IV ball and socket joint is far more comfortable for the patient. The C-Clips avoid time-consuming screw placement, this makes Herbst IV easier to handle and safer to wear.

The kit contains:

- ▶ 2 x telescopic tube with ball and socket joint
- ▶ 2 x telescopic rod with ball head
- ▶ 2 x coupling for ball head
- ▶ 4 x base
- ▶ 10 x C-clip and lock washer



Code: 38607-115-00

HEXAGON SOCKET KEY

This sterilisable socket key (1.5mm) is compatible with any Herbst set.

Code: 38607-144-00



Elastics

INTRAORAL LATEX ELASTICS

High elasticity and fatigue resistant.

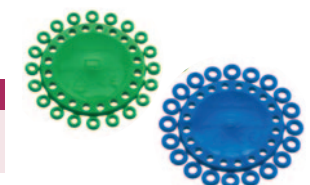
Code	Description	Pack	Size
38772-114-00	Medium 1.3 N/128g	10 x 100pcs	4.8mm
38772-124-00	Strong 1.8 N/184g	10 x 100pcs	4.8mm



DENTALASTICS® SEPARATORS

For quick and easy separation of teeth.

Code	Description	Pack	Size
38774-100-01	Green - anterior teeth	1000pcs	1.5mmø
38774-200-01	Blue - posterior teeth	1000pcs	2.1mmø



Dentaurum Expansion Screws

MINI C

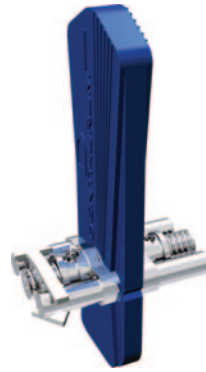
Stainless steel, with **cone** shaped expansion screw holder and built in stops that prevent the screw from coming apart.
Maximum expansion - 6.5mm
4 x 1/4 turn = 0.7mm
3 x 6.5 x 10mm



Code	Pack
38600-300-30	10pcs
38600-300-60	100pcs

MINI W

Stainless steel, with **wide** expansion screw holder and built in stops that prevent the screw from coming apart.
Maximum expansion - 6.5mm
4 x 1/4 turn = 0.7mm
3 x 6.5 x 10mm



Code	Pack
38600-320-30	10pcs
38600-320-60	100pcs

MEDIUM C

Stainless steel, with **cone** shaped expansion screw holder and built in stops that prevent the screw from coming apart.
Maximum expansion - 7.5mm
4 x 1/4 turn = 0.8mm
3.1 x 7.3 x 11mm



Code	Pack
38600-301-30	10pcs
38600-301-60	100pcs

MEDIUM W

Stainless steel, with **wide** expansion screw holder and built in stops that prevent the screw from coming apart.
Maximum expansion - 7.5mm
4 x 1/4 turn = 0.8mm
3.1 x 7.3 x 11mm



Code	Pack
38600-321-30	10pcs
38600-321-60	100pcs

Dentaurum Expansion Screws

MAXI C

Stainless steel, with **cone** shaped expansion screw holder and built in stops that prevent the screw from coming apart.
Maximum expansion - 7.5mm
4 x 1/4 turn = 0.8mm
3.2 x 9.5 x 11mm



Code	Pack
38600-302-30	10pcs
38600-302-60	100pcs

MAXI W

Stainless steel, with **wide** expansion screw holder and built in stops that prevent the screw from coming apart.
Maximum expansion - 7.5mm
4 x 1/4 turn = 0.8mm
3.2 x 9.5 x 11mm



Code	Pack
38600-322-30	10pcs
38600-322-60	100pcs

MAGNUM C

Stainless steel, with **cone** shaped expansion screw holder and built in stops that prevent the screw from coming apart.
Maximum expansion - 11mm
4 x 1/4 turn = 0.8mm
3.2 x 10.5 x 14.5mm



Code	Pack
38600-303-30	10pcs
38600-303-60	100pcs

REMATITAN® MEDIUM C

Titanium, with **cone** shaped expansion screw holder and built in stops that prevent the screw from coming apart.
Maximum expansion - 7.5mm
4 x 1/4 turn = 0.8mm
3.1 x 7.3 x 11mm

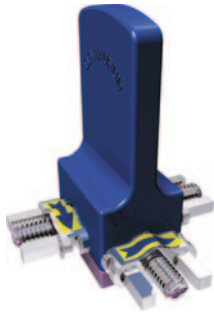


Code	Pack
38600-400-10	1pc

Dentaurum Expansion Screws

BERTONI 3D - TYPE A

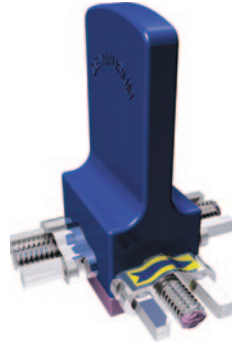
Stainless steel 3D expansion screw with **three** independently controlled movements.
Maximum expansion - 4mm per segment
4 x 1/4 turn = 0.35mm per segment
3 x 6.3 x 16mm



Code	Pack
38602-605-10	1pc

BERTONI 3D - TYPE B

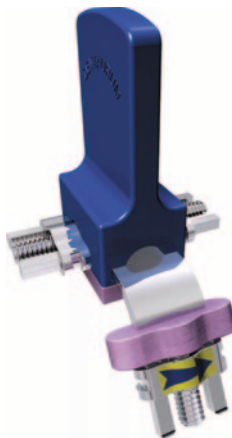
Stainless steel 3D expansion screw with **two** independently controlled movements.
Maximum expansion - 4mm per segment
4 x 1/4 turn = 0.35mm per segment
3 x 6.3 x 16mm



Code	Pack
38602-606-10	1pc

STEINER 3D

Stainless steel 3D expansion screw with two independently controlled movements and individually adjustable middle bar to adapt to different palatal vault curvatures.
Maximum expansion - 4mm per segment
4 x 1/4 turn = 0.35mm per segment
3 x 6.3 x 16mm



Code	Pack
38602-604-10	1pc

VARIETY MAXI 12

Monoguided special expansion screw with integrated spindle friction feature to prevent unwanted reversing.
Assembly dimension: 14.9mm
Screw body: 9.6mm
Maximum expansion: 12mm
4 x 1/4 turn = 0.8mm



Code	Pack
38602-806-10	1pc
38602-806-30	10pcs

Dentaurum Expansion Screws

VARIETY SMALL PALATE MAXI 12

Monoguided special expansion screw with integrated spindle friction feature to prevent unwanted reversing.
Assembly dimension: 14.9mm
Screw body: 9.6mm
Maximum expansion: 12mm
4 x 1/4 turn = 0.8mm



Code	Pack
38602-809-10	1pc
38602-809-30	10pcs

TITAN-HYRAX® MAXI 12

Titanium RPE screw.
Screw body: 14.4mm
Maximum expansion: 12mm
4 x 1/4 turn = 0.8mm



Code	Pack
38602-810-10	1pc

HYRAX® CLICK MINI 7

RPE screw with click feature to prevent unwanted reversing. The activation/deactivation of every quarter turn is acknowledged by a perceptible click.
Screw body: 9.8mm
Maximum expansion: 7mm
4 x 1/4 turn = 0.8mm



Code	Description	Pack
38602-830-10	Straight	1pc
38602-831-10	Angulated	1pc

HYRAX® CLICK MEDIUM 10

RPE screw with click feature to prevent unwanted reversing. The activation/deactivation of every quarter turn is acknowledged by a perceptible click.
Screw body: 12.8mm
Maximum expansion: 10mm
4 x 1/4 turn = 0.8mm



Code	Description	Pack
38602-832-10	Straight	1pc
38602-833-10	Angulated	1pc

Dentaurum Expansion Screws

HYRAX® CLICK MAXI 12

RPE screw with click feature to prevent unwanted reversing. The activation/deactivation of every quarter turn is acknowledged by a perceptible click.

Screw body: 14.8mm

Maximum expansion: 12mm

4 x 1/4 turn = 0.8mm

Code	Description	Pack
38602-834-10	Straight	1pc
38602-835-10	Angulated	1pc



Expansion Screw Accessories

EXPANSION SCREW KEYS

Suitable for use with all Dentaurum expansion screws.

Code	Pack
38611-115-60	100pcs



SAFETY KEY

Suitable for use with all Dentaurum hyrax® and Variety screws.

Code	Pack
38611-120-01	10pcs



Forming Materials

CACHET

The ultimate aligner and retainer material. Supplied foil packed to aid longevity, Cachet can be formed with its protective layer to help forming and trimming. Once removed, the Cachet appliance is crystal clear and also bonds to acrylic. The material has high-impact like properties and is incredibly strong without being brittle. Supplied in different thicknesses for all possible applications, Cachet has become a market leader due to its continuity of performance.



Code	Description	Pack	Size
8oCAM080	0.8mm	10pcs	Square
8oCAM080-120R	0.8mm	10pcs	120mmø
8oCAM080-125R	0.8mm	10pcs	125mmø
8oCAM100	1mm	10pcs	Square
8oCAM100-120R	1mm	10pcs	120mmø
8oCAM100-125R	1mm	10pcs	125mmø
8oCAM150	1.5mm	10pcs	Square
8oCAM150-120R	1.5mm	10pcs	120mmø
8oCAM150-125R	1.5mm	10pcs	125mmø
8oCAM200	2mm	5pcs	Square
8oCAM200-120R	2mm	5pcs	120mmø
8oCAM200-125R	2mm	5pcs	125mmø
8oCAM300	3mm	5pcs	Square

CACHET PLIERS

Used to create retention buttons in our Cachet aligner material.

Code: 84CP



CACHET BOX

White gloss, branded retainer box. Supplied per 10pcs.

Code: 8oCAMB



CENTRI™ FORM RIGID

Our standard rigid material, supplied in foil bags.

Code	Description	Pack	Size
16VTS	0.5mm	10pcs	Square
16VTSR120	0.5mm	10pcs	120mmø
16VTSR125	0.5mm	10pcs	125mmø



Forming Materials

DREVE BIOLON

Thermoforming blank made of PETG, supplied in an insulation foil for improved and long-lasting transparency. Biolon is a transparent material that bonds to acrylic and is ideal for all orthodontic devices.

Code	Description	Pack	Size
D420001	0.5mm	25pcs	120mmø
D420003	0.75mm	20pcs	120mmø
D420005	1mm	25pcs	120mmø
D420007	1.5mm	30pcs	120mmø
D420009	2mm	20pcs	120mmø
D420011	3mm	10pcs	120mmø



For square or 125mmø please ask for availability.

DREVE BIOLIT D

Thermoforming blank made of polycarbonate, for the production of orthodontic devices, drilling splints and bandage plates. The material is hot sterilisable and bonds to acrylic.

Code	Description	Pack	Size
D420013	1mm	10pcs	120mmø
D420014	2mm	10pcs	120mmø



For square or 125mmø please ask for availability.

DREVE KOMBIPLAST DUAL LAMINATE

Dual laminate made from PETG and EVA, the rigid side bonds to acrylic and the soft side provides comfort. With the added benefit when forming there is no need to heat both sides.

Code	Description	Pack	Size
D420016	2mm (1mm hard/1mm soft)	10pcs	120mmø
D420016S	2mm (1mm hard/1mm soft)	10pcs	125mmø
D420016SQ	2mm (1mm hard/1mm soft)	10pcs	Square
D420017	3mm (1.5mm hard/1.5mm soft)	10pcs	120mmø
D420017S	3mm (1.5mm hard/1.5mm soft)	10pcs	125mmø
D420017SQ	3mm (1.5mm hard/1.5mm soft)	10pcs	Square
D420018	4mm (3mm hard/1mm soft)	10pcs	120mmø
D420018S	4mm (3mm hard/1mm soft)	10pcs	125mmø
D420018SQ	4mm (3mm hard/1mm soft)	10pcs	Square



Forming Materials

DREVE UZF

Underlay blank that will not bond to acrylic thanks to its styrene/butadiene composition. Can be used as a space or shrinkage compensator.

Code	Description	Pack	Size
D42470	0.1mm	100pcs	120mmø
D42470S	0.1mm	100pcs	125mmø
D42474X42	0.1mm	100pcs	42mmø



Impression Material

ORTHALGENAT® DUO

Especially designed for orthodontic associated use.

Code	Description	Size
38150-501-30	Berry	1kg
38150-501-20	Mint	1kg



For the complete range of silicone and alginate impression materials please see from p506.

Miscellaneous

CENTRI™ GLUE

Medium viscosity general-purpose glue.

Code: 07LAP Size: 20g

CENTRI™ ACTIVATOR

Aerosol based activator with fine mist.

Code: 07ZAP Size: 200ml

CENTRI™ DEBONDER

Used to dissolve cyanoacrylates.

Code: 07CDB Size: 20ml



Miscellaneous

VERSAGLUE

With a diverse range of viscosities and setting times, the award winning Versagluue bonds all of the materials you use in the laboratory including gypsum, metal, acrylic and porcelain.

Code	Description	Size
HPD2025	PX-4 Thin	28g
HPD2026	PX-40 Medium	28g
HPD2027	PX-400 Thick	28g



DENTAL VERNIER

Münchener design, precision instrument with extra delicate tips.

Code: 38042-751-00



DENTAURUM O-ATLAS II

Ursula Wirtz presents an all-new and extended version of the orthodontic compendium, O-Atlas. Designed as a work and study aid, the comprehensive pictorial reference guide can be used by both the technician and orthodontist. The hardback book has more than 1000 illustrations and photos and gives precise, clear information on how to make 235 appliances. The new version features 44 new groundbreaking appliances and over 800 new HD images.

Code: 38903-920-20



FKO SPLIT FIXATOR

This split-post fixator (verticulator) is designed for precise model positioning and holding. Special conical arms allow for the removal and replacement of models.

Code: 38072-004-00



FKO SPLIT FIXATOR EXPANSION KIT

To produce a horizontally split functional appliance, as well as correct positioning of the models parallel to the occlusal plane. The horizontal dividing mirror is made of highly corrosion-resistant stainless steel, thus producing a smooth and shiny acrylic surface when applied to the upper and lower jaws. The appliance does not have to be touched up after polymerisation.

Code: 38072-006-00



Miscellaneous

HEADGEAR

High pull headgear without safety modules.

Code	Description	Pack
38745-027-00	Denim Blue	1pc
38745-031-00	Cotton Blue	1pc



HEADGEAR SAFETY MODULES

Safety modules with metal clip, suitable for use with neck bands or high pull headgear.

Code	Description	Pack
38745-028-00	Light - 4.5 N/450g (white)	10pcs
38745-029-00	Medium - 6 N/600g (dark blue)	10pcs
38745-030-00	Strong - 7.5 N/750g (light blue)	10pcs



JAW FRACTURE SPLINT

Stainless steel splint with hooks.

Code: 38021-273-00

Size: 1m



LIGATURE TUCKER

Double ended tool, for bending and adapting wire ligatures.

Code: 38402-253-00



MARKING PEN

Indelible marking pen with rubber.

Code	Description	Pack
38043-800-00	Black	1pc
38043-900-00	Red	1pc



MARKING PENCIL WHITE

Traditional wax marking pencil.

Code: 38043-700-00

Pack: 6pcs



Miscellaneous

MODEL GLOSS

Environmentally friendly solution to add a glossy and dust resistant finish to plaster models.

Code: 38166-450-00

Size: 4.5kg



NANO ROCK



Liquid die stone that is incredibly strong and lightweight compared to traditional gypsums. Abrasion resistant and long-lasting, it is ideal for orthodontic study casts and demonstration models. Nano Rock does not shrink, has outstanding dimensional stability and is clean and precise to trim. Infinite colour variations can be achieved with minimal efforts when using the individual colours and the white base kit.

Code	Description	Size	Code	Description	Size
90NRSKN	Natural Starter Kit	1kg(A)+1kg(B)	90NRRB	Blue Body (A)	1kg
90NRSKW	White Starter Kit	1kg(A)+1kg(B)	90NRRD	Red Body (A)	1kg
90NRBL	Black Body (A)	1kg	90NRTN	Tan Body (A)	1kg
90NRCB	Brown Body (A)	1kg	90NRWH	White Body (A)	1kg
90NRGN	Green Body (A)	1kg	90NRYW	Yellow Body (A)	1kg
90NRNA	Natural Body (A)	1kg	90NRCAT	Catalyst (B)	1kg

POLYBASES

Preatarticulated pour bases, easy to use and with the correct angles every time.

Code	Description	Pack	Dimensions
03PBS	Standard	100pcs	18 x 75 x 58mm
03PBL	Large	100pcs	18 x 95 x 70mm
03PBH	Hinges	100pcs	



Miscellaneous

RETAINER CHEWIES

Helps to create a better fit with a new retainer.

Code: 01CHEW

Pack: 10 x 2pcs



RETAINER HOOKS

For the quick and safe removal of retainers/aligners.

Code: 01RH

Pack: 10pcs



RUBBER FORMERS

High quality rubber formers in a variety of sizes.

Code	Description	Pack	Dimensions
07RFUL	Upper Large	1pc	20 x 90 x 65mm
07RFUXL	Upper X-Large	1pc	20 x 95 x 75mm
07RFL	Lower Large	1pc	20 x 90 x 65mm
07RFLXL	Lower X-Large	1pc	20 x 95 x 75mm



Orthodontic Stone

ORTOTYPO4®

Class IV pure white, extra hard orthodontic stone.

- Water/powder ratio 22ml/100g
- Mixing time (manual) 60 secs
- Mixing time (vacuum mixer) 30 secs
- Pouring time 3 mins
- Setting time 7 mins
- Removal time 30 mins
- Expansion @ 2 hours = 0.08%
- Compressive strength after 24 hours = 103 MPa / 14.927 psi / 1.051 Kg/cm²
- Rockwell hardness after 24 hours = 95 HRL

Code: 66OS4

Size: 25kg

For the complete range of die stones and plasters please see from p492 and p520.



Pliers

CACHET PLIERS

Used to create retention buttons in our Cachet aligner material.

Code: 84CP



PREMIUM MAXI ADAMS

Large (145mm) Adams pliers with two smooth rectangular beaks. Maximum wire thickness 0.8mmø. Includes Premium-Line 10 year guarantee.

Code: 38003-094-00



PREMIUM MAXI ADAMS WITH ROUND BEAK

Large (160mm) Adams pliers with one smooth, round and one smooth, rectangular beak. Maximum wire thickness 0.8mmø. Includes Premium-Line 10 year guarantee.

Code: 38004-095-00



PREMIUM MEDIUM ADAMS

Medium (120mm) Adams pliers with hardened steel insert and wire guidance groove. Maximum wire thickness 0.7mmø. Includes Premium-Line 10 year guarantee.

Code: 38004-515-00



PREMIUM MEDIUM ADAMS T/C COATED

Medium (120mm) Adams pliers with tungsten carbide coating on beaks. Maximum wire thickness 0.7mmø. Includes Premium-Line 10 year guarantee.

Code: 38003-515-00



EQ-LINE MAXI ADAMS

Maximum wire thickness 0.8mmø.

Code: 38045-016-00



Pliers

EQ LINE MAXI ADAMS WITH ROUND BEAK

Maximum wire thickness 0.8mmø.

Code: 38045-017-00



PREMIUM MAXI ADERER

Large (155mm) three pronged Aderer pliers. Maximum wire thickness 1.5mmø. Includes Premium-Line 10 year guarantee.

Code: 38003-202-00



PREMIUM MEDIUM ADERER

Medium (130mm) three pronged Aderer pliers. Maximum wire thickness 0.9mmø. Includes Premium-Line 10 year guarantee.

Code: 38003-200-00



EQ-LINE MEDIUM ADERER

Maximum wire thickness 0.9mmø.

Code: 38045-008-00



ADAMS CLASP BENDING

Special pliers for easy forming of Adams clasps. Maximum wire thickness 0.7mmø.

Code: 38012-523-00



PREMIUM MEDIUM LOOP FORMING

For bending small springs, eyelets and loops. Maximum wire thickness 0.7mmø. Includes Premium-Line 10 year guarantee.

Code: 38003-053-00



PREMIUM MINI LOOP FORMING

For loop forming and bending of round and rectangular wires. Maximum wire thickness 0.5mmø. Includes Premium-Line 10 year guarantee.

Code: 38003-351-00



Pliers

EQ-LINE MEDIUM LOOP FORMERS

Maximum wire thickness 0.7mmø.

Code: 38045-012-00



MEDIUM NEEDLE HOLDER

According to Mathieu, the convenient and practical design makes these pliers ideal for ligating.

Code: 38000-030-00



PREMIUM YOUNG LOOP

Universal pliers for different size loops, ideal for labial arches. Maximum wire thickness 0.7mmø. Includes Premium-Line 10 year guarantee.

Code: 38012-074-00



HEAVY GAUGE SIDE/MAUN CUTTER

Especially designed cutter for large size wires, which requires little force. Use the bottom part of the plier to cut wire up to 1.3mmø.

Code: 38044-177-00



For a full range of pliers, please ask for the Pliers and Instruments Catalogue.

Polishing

PROTHO CLEAN®

Fully synthetic cleaning product for the removal of residual monomer and adding a high lustre finish to acrylic.

Code: 04PCS

Size: 75ml



LUSTRE

Initial polishing compound for acrylic.

Code: 11LPC

Size: 650g



Polishing

VONAX

High gloss polishing compound for acrylic.

Code: 11VPC

Size: 650g



RENFERT UNIVERSAL POLISHING PASTE

Hard polishing compound that creates a high lustre mirror like finish.

Code: 87R5131000E

Size: 200g



For the complete range of polishing medium please see from p524.

Separators

CENTRI™ SHIELD

Cream based precision separator for isolating plaster models.

Code: 01CSD

Size: 500ml



CENTRI™ ISO +

One coat alginate based separator that forms a thin film and is abrasion resistant. Separates plaster to plaster and plaster to acrylic.

Code: 85CISO

Size: 1ltr



For the complete range of separators please see from p529.

Solder/Flux

ORTHODONTIC SOLDER WIRE

Cadmium free solder wire, 0.75mmø.

Code	Description	Size
14CFS	Solder	30g
14SSF	Flux	30g



Solders/Flux

PD UNIVERSAL

High quality, cadmium free, fluxed universal solder with a melting temperature of 630-680°C.

Code	Description	Pack	Size
32PDSS	White	12pcs	1mmø x 150mm

SUREFLOW SOLDER

High quality, cadmium free, silver solder on a spool with a low melting temperature of 630-660°C.

Code	Description	Size
32SSS	0.7mmø	125g



Tubing

WHW STAINLESS STEEL TUBING

Code	Description	Size
14SST45	0.45mmø	305mm
14SST5	0.5mmø	305mm
14SST6	0.6mmø	305mm
14SST7	0.7mmø	305mm
14SST8	0.8mmø	305mm
14SST9	0.9mmø	305mm
14SST100	1mmø	305mm
14SST113	1.13mmø	305mm
14SST125	1.25mmø	305mm



DENTAURUM STAINLESS STEEL TUBING

Code	Description	Size
38480-001-00	0.5mmø	300mm
38480-003-00	0.6mmø	300mm
38480-005-00	0.7mmø	300mm
38480-007-00	0.8mmø	300mm
38480-009-00	0.9mmø	300mm
38480-011-00	1mmø	300mm
38480-013-00	1.1mmø	300mm
38480-015-00	1.2mmø	300mm



Wax

ANUTEX®

Pink modelling wax.

Code: 01MW2 Size: 2.5kg



THERMO WAX

Heat-resistant, pink blocking out wax that prevents the acrylic from becoming cloudy in appearance. Melting point of 87°C.

Code: 38120-170-00 Size: 50g



Please refer to our index to find your wax of choice.

Wire

STAINLESS STEEL WIRE

Code	Description	Size
14SS50	0.5mm	450g
14SS50WC	0.5mm wooden spool	450g
14SS60	0.6mm	450g
14SS60WC	0.6mm wooden spool	450g
14SSW70	0.7mm	30g
14SS70	0.7mm	450g
14SS70WC	0.7mm wooden spool	450g
14SSW80	0.8mm	30g
14SS80	0.8mm	450g
14SS80WC	0.8mm wooden spool	450g
14SSW90	0.9mm	30g
14SS90	0.9mm	450g
14SS90WC	0.9mm wooden spool	450g
14SS100	1mm	450g
14SS125	1.25mm	450g
14SS15	1.5mm	450g



Wire

WHW STAINLESS STEEL ½ ROUND WIRE

Code	Description	Size
14HRWM30	1.5mm x 0.75mm	30g
14HRWL30	1.8mm x 0.9mm	30g



REMANIUM® LIGATURE WIRE

Stainless steel soft wire <800 N/mm².

Code	Description	Size
38500-025-00	0.25mm	80m
38503-050-00	0.5mm	50m



REMANIUM® HARD - COILS

Round stainless steel hard wire 1400-1600 N/mm².

Code	Description	Size
38513-070-00	0.7mm	30m
38514-070-00	0.7mm	165m
38513-080-00	0.8mm	20m
38514-080-00	0.8mm	125m
38513-090-00	0.9mm	10m
38514-090-00	0.9mm	100m



REMANIUM® SPRING HARD - COILS

Round stainless steel spring hard wire 1800-2000 N/mm².

Code	Description	Size
38523-050-00	0.5mm	50m
38523-060-00	0.6mm	40m
38523-070-00	0.7mm	30m
38524-070-00	0.7mm	165m
38523-080-00	0.8mm	20m
38523-090-00	0.9mm	10m
38524-090-00	0.9mm	100m
38523-100-00	1mm	10m
38523-110-00	1.1mm	10m
38523-150-00	1.5mm	10m



Wire

REMALOY® STRAIGHT WIRES

Round stainless steel hard wire 1400-1600 N/mm².

Recommended for Quad Helix, Crozat appliances, palatal and lingual bars. Can be heat treated.

Code	Description	Pack	Size
38528-080-00	0.8mm	10pcs	380mm
38528-090-00	0.9mm	10pcs	380mm
38528-100-00	1mm	10pcs	380mm
38528-150-00	1.5mm	10pcs	380mm



REMANIUM® STRAIGHT WIRES

Round stainless steel spring hard wire 1800-2000 N/mm².

Code	Description	Pack	Size
38535-003-00	0.6mm	25pcs	380mm
38527-070-00	0.7mm	25pcs	300mm
38527-080-00	0.8mm	25pcs	300mm



DENTAFLEX® TWISTED WIRES

3 strand twisted, super spring hard wire 2500-2700 N/mm².

Code	Description	Pack	Size
38545-738-00	0.38mm	10pcs	380mm
38545-745-00	0.45mm	10pcs	380mm
38545-750-00	0.5mm	10pcs	380mm



DENTAFLEX® CO-AXIAL/BRAIDED WIRE

6 strand Co-Axial/braided hard plus wire 1600 - 1800 N/mm².

Code	Description	Pack	Size
38545-638-00	0.38mm	10pcs	380mm
38545-645-00	0.45mm	10pcs	380mm

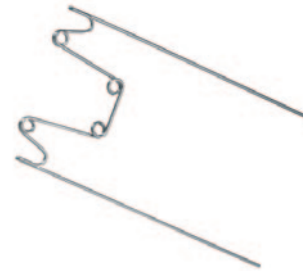


Wire

REMANIUM® QUAD HELIX

Stainless steel spring hard wire 1800-2000 N/mm². For insertion into palatal sheaths on the upper molars.

Code	Description	Pack	Size
38728-100-01	Size 1 = 36mm and 17.3mm Length	10pcs	0.9mmØ
38728-101-01	Size 2 = 38mm and 19mm Length	10pcs	0.9mmØ
38728-102-01	Size 3 = 40mm and 20.7mm Length	10pcs	0.9mmØ



REMANIUM® TENSION SPRING

Stainless steel.

Code	Description	Size
38758-165-00	Inner Ø 0.7mm x Outer Ø 1.15mm	1m
38758-175-00	Inner Ø 0.75mm x Outer Ø 1.21mm	1m



REMANIUM® COMPRESSION SPRING

Stainless steel.

Code	Description	Size
38758-365-00	Inner Ø 0.7mm x Outer Ø 1.16mm	1m
38758-375-00	Inner Ø 0.75mm x Outer Ø 1.21mm	1m



NONINIUM® NICKEL FREE* HARD WIRE - COILS

Stainless steel hard wire 1400-1600 N/mm².

Code	Description	Size
38520-070-10	0.7mm	30m
38520-080-10	0.8mm	20m
38520-090-10	0.9mm	10m



*Nickel trace element of <0.05% due to manufacturing process.

Wire

NONINIUM® NICKEL FREE* SPRING HARD WIRE - COILS

Stainless steel spring hard wire 1800-2000 N/mm².

Code	Description	Size
38520-072-00	0.7mm	30m
38520-082-00	0.8mm	20m
38520-092-00	0.9mm	10m



*Nickel trace element of 0.05% due to manufacturing process.

Wire Clasps

NONINIUM® ADAMS CLASPS

Stainless steel hard wire 1400-1600 N/mm².

Code	Description	Pack
38621-404-01	7mm	10pcs
38621-405-01	8mm	10pcs
38621-406-01	9mm	10pcs
38621-407-01	10mm	10pcs
38621-408-01	11mm	10pcs
38621-409-01	12mm	10pcs

