

MILLING

When you buy a system or materials from us, you are gaining access to an award-winning infrastructure, including qualified instructors and engineers.

IN THIS SECTION:

Acetal Resin	260
Acrylic	260
Bonding Solutions	260
CoCr	261
Extraction	262
Glass/Hybrid Blocks	264
HOLDERS	266
Milling Burs	268
Milling Machines	270
Miscellaneous	274
PC Sets	275
PEEK	275
PMMA	276
Polishers	282
Prosthetic Systems	284
Scanners	287
Scanner Accessories	289
Sintering Furnaces	290
Software	292
Splint Material	294
Staining	294
Titanium Bases	299
Wax	300
LT Zirconia	302
HT Zirconia	302
SHT Zirconia	303

Acetal Resin

TACETAL

Acetal resin disc used for diagnostic purposes that is easy to mill and more stable than most alternatives.

Code	Description	Size	Dimensions
TADBL1	BL1	20mm	98mmø
TADA1	A1	20mm	98mmø



Acrylic

KEYMILL™ DENTURE BASE DISC

High impact acrylic discs that are easy and clean to mill, suitable for denture base applications. The final product is extremely strong, vibrant, and aesthetic, with minimal finishing or polishing required.

Code	Description	Size
39KMDBDO30	Original	30mm
39KMDBDL30	Light Reddish Pink	30mm



VITA VIONIC® BASE

Highly crosslinked, PMMA blanks for the fabrication of dentures. Homogeneous material with excellent shade stability.

Code	Description	Size	Dimensions
VADLP9830	Light-Pink	30mm	98mmø
VADOP9830	Orange-Pink	30mm	98mmø
VADDP9830	Deep-Pink	30mm	98mmø



Bonding Solutions

SCHÜTZ SEBOND™ IMPLANT

Creates a secure bond between ceramic and/or zirconia and metal abutments including titanium.



Code	Size
SZ640075	5ml

SCHÜTZ ALPHALINK IMPLANT

Creates a secure bond between ceramic and/or zirconia and metal abutments including titanium, supplied in an easy to use syringe.



Code	Size
SZ640076	2 x 4g

SCHÜTZ SEBOND™ SMART ZR

Creates a secure bond between zirconia and composite.



Code	Size
SZ640068	5ml

CoCr

CERAMILL SINTRON®

The ceramill sintron® sintering metal (CoCr) allows the in-house laboratory fabrication of CNC-based non-precious metal restorations. ceramill sintron® provides the highest processing reliability combined with maximum control and convenience. The wax-like texture of the ceramill sintron® blanks enables the material to be easily dry milled on desktop machines. The frameworks attain their final state during the subsequent sinter process in the ceramill® argotherm 2 furnace. There is also no change of veneering porcelain required: any standard porcelain suitable for CoCr (CTE 14.5) can be used.



Code	Size	Dimensions
AG761101R	10mm	71mm
AG761102R	12mm	71mm
AG761103R	14mm	71mm
AG761104R	16mm	71mm
AG761105R	18mm	71mm
AG761106R	20mm	71mm
AG761107R	25mm	71mm

Code	Size	Dimensions
AG761132	10mm	98mmø
AG761130	12mm	98mmø
AG761128	14mm	98mmø
AG761126	16mm	98mmø
AG761124	18mm	98mmø
AG761122	20mm	98mmø
AG761120	25mm	98mmø

Also available in 95mmø

REMANIUM® STAR MD II

Advanced CoCr bonding alloy in a millable disc, with a homogeneous and fine grained microstructure making it easy and clean to mill. Same exacting material quality as remanium® star bonding alloy.

Code	Size	Dimensions
38102-752-01	12mm	98mmø
38102-754-01	15mm	98mmø
38102-756-01	20mm	98mmø
38102-757-01	25mm	98mmø



Extraction

AMANN GIRRBACH CERAMILL® AIRSTREAM

Suction unit for the ceramill® range of milling machines.

Code	Size	Dimensions
AG178600	16kg	406 x 280 x 423mm

CERAMILL® AIRSTREAM FILTER BAGS

Code: AG178610	Pack: 5pcs
----------------	------------

CERAMILL® AIRSTREAM MICROFILTER

Code: AG178611	Pack: 1pc
----------------	-----------



AMANN GIRRBACH CERAMILL® COOLSTREAM SET

Lubricating system for the ceramill® motion 2 wet milling machine, the set includes the tank, lubricant, cart and connectors.

Code	Size	Dimensions
AG178640	36kg	656 x 518 x 651mm



AMANN GIRRBACH CERAMILL® COOLSTREAM TANK

Coolant tank for the ceramill® motion 2 milling machine.

Code	Size	Dimensions
AG178641	6kg	500 x 200 x 400mm

AMANN GIRRBACH CERAMILL® COOLSTREAM CART

Convenient trolley that houses the Coolstream tank and ceramill® motion 2 milling machine.

Code	Size	Dimensions
AG178642	30kg	656 x 518 x 651mm

AMANN GIRRBACH CERAMILL® COOLSTREAM ACCESSORIES

CERAMILL® COOLSTREAM FILTER BAG

Code	Pack
AG179256	2pcs

CERAMILL® COOLANT

Code	Size
AG178650	1ltr

Extraction

RENFERT SILENT POWERCAM EC

- ▶ Bag-less, high performance extraction unit for CAM systems. **Requires interface cable.**
- ▶ Low maintenance brushless motor with a guaranteed 5,000 hours of operation
- ▶ Suitable for CAD/CAM systems requiring high suction performance due to a powerful motor with a maximum flow rate of 4000L/min
- ▶ Sophisticated bidirectional communication with the CAM system via PLC control
- ▶ No dust bags to change due to bag-free fine filter technology, including automatic filter cleaning
- ▶ Very low operating noise of 54.3 dB(A)



Code	Size	Dimensions
87R2939000003	18kg	540 x 270 x 535mm

RENFERT SILENT COMPACTCAM

- ▶ Efficient compact extraction unit for CAM systems. **Requires interface cable.**
- ▶ Low maintenance brushless motor with a guaranteed 1,000 hours of operation
- ▶ Sophisticated bidirectional communication with the CAM system via SPS interface
- ▶ Especially developed for the CAM market
- ▶ No dust bags to change due to bag-free fine filter technology, including mechanical filter cleaning



Code	Size	Dimensions
87R2934200003	13.2kg	500 x 245 x 440mm

RENFERT CAM INTERFACE CABLES

Code	Description	Size
87R29340005	For VHF	5m
87R29340006	For Roland DG	5m
87R29340008	For Imes-Icore	5m
87R29340009	For Amann Girrbach	5m
87R29340010	For Yenadent	5m
87R29340011	For Zirkonzhan	5m
87R29340012	For Zirkonzhan C14	5m

Glass/Hybrid Blocks

VITA SUPRINITY® PC

VITA SUPRINITY® is a monochromatic, precrystallised glass ceramic CAD block. It is recommended for aesthetic restorations in both the anterior and posterior regions – full crowns, implant-supported crowns and veneers. It is a dual step material, crystallisation or combination firing is required.

Supplied per 5pcs with Amann Girrbach holders.



Code	Description	Dimensions	Code	Description	Dimensions
AG761001	0M1-T	12 x 14 x 18mm	AG761021	0M1-HT	12 x 14 x 18mm
AG761002	A1-T	12 x 14 x 18mm	AG761022	A1-HT	12 x 14 x 18mm
AG761003	A2-T	12 x 14 x 18mm	AG761023	A2-HT	12 x 14 x 18mm
AG761004	A3-T	12 x 14 x 18mm	AG761024	A3-HT	12 x 14 x 18mm
AG761005	A3.5-T	12 x 14 x 18mm	AG761025	A3.5-HT	12 x 14 x 18mm
AG761006	B2-T	12 x 14 x 18mm	AG761026	B2-HT	12 x 14 x 18mm
AG761007	C2-T	12 x 14 x 18mm	AG761027	C2-HT	12 x 14 x 18mm
AG761008	D2-T	12 x 14 x 18mm	AG761028	D2-HT	12 x 14 x 18mm

VITA SUPRINITY® is also available with CEREC or universal holders.

VITABLOCS® MARK II

VITABLOCS® Mark II is a monochromatic, feldspar ceramic CAD block. It is recommended for small aesthetic restorations – inlays, onlays and partial crowns. It is a single step material, firing is not required but is possible.

Supplied per 5pcs with Amann Girrbach holders.



Code	Description	Dimensions	Code	Description	Dimensions
AG760051	A1	10 x 12 x 15mm	AG760055	2M1	10 x 12 x 15mm
AG760052	A2	10 x 12 x 15mm	AG760056	2M2	10 x 12 x 15mm
AG760053	A3	10 x 12 x 15mm	AG760057	3M2	10 x 12 x 15mm
AG760060	A1	12 x 14 x 18mm	AG760058	0M1	12 x 14 x 18mm
AG760061	A2	12 x 14 x 18mm	AG760063	1M2	12 x 14 x 18mm
AG760062	A3	12 x 14 x 18mm	AG760064	2M1	12 x 14 x 18mm
AG760067	0M1	10 x 12 x 15mm	AG760065	2M2	12 x 14 x 18mm
AG760054	1M2	10 x 12 x 15mm	AG760066	3M2	12 x 14 x 18mm

VITABLOCS® MARK II is also available with CEREC or universal holders.

Glass/Hybrid Blocks

VITA ENAMIC®

VITA ENAMIC® is a monochromatic, hybrid ceramic CAD block. It is recommended for minimally invasive and limited space restorations in both anterior and posterior regions – cervical veneers, non-prep veneers and posterior crowns. It is a single step material however stain coating can be applied if required. This material should not be fired.

Supplied per 5pcs with Amann Girrbach holders.



Code	Description	Dimensions	Code	Description	Dimensions
AG761201	0M1-T	12 x 14 x 18mm	AG761211	0M1-HT	12 x 14 x 18mm
AG761202	1M1-T	12 x 14 x 18mm	AG761212	1M1-HT	12 x 14 x 18mm
AG761203	1M2-T	12 x 14 x 18mm	AG761213	1M2-HT	12 x 14 x 18mm
AG761204	2M2-T	12 x 14 x 18mm	AG761214	2M2-HT	12 x 14 x 18mm
AG761205	3M2-T	12 x 14 x 18mm	AG761215	3M2-HT	12 x 14 x 18mm

VITA ENAMIC® is also available with CEREC or universal holders.

VITA ENAMIC® MULTICOLOR

VITA ENAMIC® multiColor is a multichromatic, hybrid ceramic CAD block. It is recommended for aesthetic restorations in both the anterior and posterior regions – full crowns, veneers and posterior crowns. It is a single step material however stain coating can be applied if required. This material should not be fired.

Supplied per 5pcs with universal holders.



Code	Description	Dimensions	Code	Description	Dimensions
VEM1M1-HT	1M1-HT	12 x 14 x 18mm	VEM3M2-HT	3M2-HT	12 x 14 x 18mm
VEM1M2-HT	1M2-HT	12 x 14 x 18mm	VEM4M2-HT	4M2-HT	12 x 14 x 18mm
VEM2M2-HT	2M2-HT	12 x 14 x 18mm			

VITA ENAMIC® multiColor is also available with CEREC holders.

VITABLOCS® TRILUXE FORTE

VITABLOCS® TriLuxe forte is a four layer, multichromatic, feldspar ceramic CAD block. It is recommended for highly aesthetic restorations in the anterior region – full crowns and veneers. It is a single step material, firing is not required but is possible.

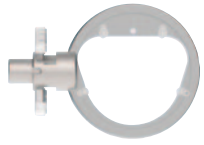
Supplied per 5pcs with Amann Girrbach holders.



Code	Desc.	Dimensions	Code	Desc.	Dimensions
AG760070	A1	10 x 12 x 15mm	AG760080	A1	12 x 14 x 18mm
AG760071	A2	10 x 12 x 15mm	AG760081	A2	12 x 14 x 18mm
AG760072	A3	10 x 12 x 15mm	AG760082	A3	12 x 14 x 18mm

VITABLOCS® TriLuxe forte is also available with CEREC or universal holders.

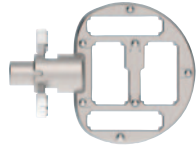
HOLDERS



CERAMILL® D-WAX HOLDER M2

ceramill® motion 2 holder for denture wax.

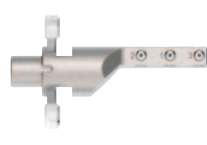
Code: AG179282



CERAMILL® D-SET HOLDER M2

ceramill® motion 2 holder for denture teeth.

Code: AG179283



CERAMILL® 3 BLOCK HOLDER M2

ceramill® motion 2 holder for (3pcs) glass ceramics and hybrid blocks.

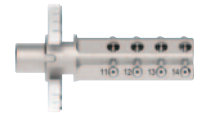
Code: AG179260



CERAMILL® 9 ZIRCONIA BLOCK HOLDER M2

ceramill® motion 2 holder for (9pcs) zirconia blocks.

Code: AG179248



CERAMILL® 12 BLOCK HOLDER M2

ceramill® motion 2 holder for (12pcs) glass ceramics and hybrid blocks.

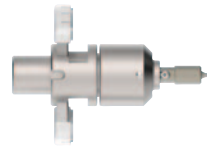
Code: AG179290



CERAMILL® ADDITIONAL ADAPTOR M2

Converts the 3 and 12 block holders for use with lithium disilicate.

Code: AG760975



CERAMILL® ROTATIONAL MILLING HOLDER M2

ceramill® motion 2 holder for rotational milling of customised abutments.

Code: AG179278



CERAMILL® ROTATIONAL MILLING HOLDER IC

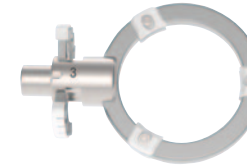
ceramill® mikro ic holder for rotational milling of customised abutments.

Code: AG179614

HOLDERS

CERAMILL® 98MM HOLDERS

ceramill® motion 2 holder for (3pcs) glass ceramics and hybrid blocks.



Code	Description
AG179294	ceramill® motion 2
AG179331	ceramill® mikro 5X
AG179295	ceramill® mikro 4X

CERAMILL® 3 BLOCK HOLDER IC

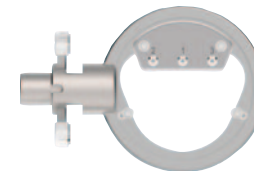
ceramill® mikro ic holder for (3pcs) glass ceramics and hybrid blocks.



Code	Description
AG179615	For use with blocks with the Amann Girrbach mandrel
AG179616	For use with blocks with a universal mandrel

CERAMILL® HOLDER ADAPTOR M2/IC

Adapts a 71mm arm into a (3pcs) glass ceramic and hybrid block holder.



Code: AG179245

CERAMILL® 1 BLOCK HOLDER IC

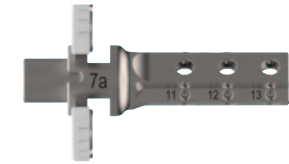
ceramill® mikro ic holder for glass ceramics and hybrid blocks.



Code	Description
AG179610	For use with blocks with the Amann Girrbach mandrel
AG179611	For use with blocks with a universal mandrel

CERAMILL® ZIRCONIA BLOCK HOLDER IC

ceramill® mikro ic holder for zirconia blocks.



Code	Description
AG179612	1pc
AG179617	3pcs

CERAMILL® TI-FORMS UPGRADE KIT

ceramill® motion 2 starter kit for customising abutments that includes the holder, TI Roto 1mm & 2mm and storage bar.



Code: AG760100

Milling Burs

CERAMILL® ROTO

Cutter for wet and dry processing. Suitable for use with the ceramill® mikro 4X/5X and the ceramill® motion 2.

Code	Description	Pack
AG760605	2.5mmø	1pc
AG760604	1mmø	1pc
AG760606	0.6mmø	1pc
AG760607	0.3mmø	1pc



CERAMILL® ROTO DIAMOND

Diamond rotary for wet processing of glass ceramic and hybrid blocks. Suitable for use with the ceramill® mikro ic and the ceramill® motion 2.

Code	Description	Pack
AG760648	1.8mmø	1pc
AG760649	1.4mmø	1pc
AG760650	1mmø	1pc
AG760651	0.4mmø	1pc



CERAMILL® ROTO DMB DC

Diamond coated rotary for dry processing of hybrid blocks. Suitable for use with the ceramill® mikro 4X/5X and the ceramill® motion 2.

Code	Description	Pack
AG760608	2.5mmø	1pc
AG760609	1mmø	1pc
AG760613	0.6mmø	1pc
AG760614	0.3mmø	1pc



Milling Burs

CERAMILL® ROTO TI

Cutter for wet processing of ceramill® ti-forms. Suitable for use with the ceramill® mikro ic and the ceramill® motion 2.

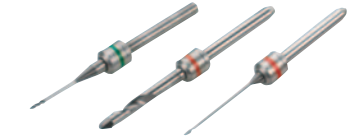
Code	Description	Pack
AG760616	2mmø	1pc
AG760615	1mmø	1pc



CERAMILL® ROTO FDS

Cutter for the ceramill® fds (full denture prosthetic system). Suitable for use with the ceramill® mikro 5X and the ceramill® motion 2.

Code	Description	Pack
AG760633	3mmø	1pc
AG760630	1.2mmø	1pc
AG760631	1mmø	1pc



CERAMILL® ROTO SC

High speed cutter for the fabrication of occlusal splints. Suitable for use with the ceramill® mikro 5X and the ceramill® motion 2.

Code	Description	Pack
AG760634	2.5mmø	1pc



Milling Machines

Maximum precision, future-security and full inhouse control due to maximum material and indication diversity form the basis of the ceramill® machine concept.

Product	Material	Process	Milling			
			ceramill® mikro 4x Dry	ceramill® mikro 5x Dry	ceramill® mikro ic 4x Wet	ceramill® motion 2 5x Wet & Dry
ceramill sintron®	CoCr sinter metal	Dry	●	●	●	●
ceramill® zirconia (LT, HT, SHT)	Zirconia	Wet & Dry	●	●	●	●
ceramill® wax	Milling wax	Dry	●	●	●	●
ceramill® a-cast	Acrylic, transparent	Wet & Dry	●	●	●	●
ceramill® a-temp multilayer	PMMA stained acrylic	Wet & Dry	●	●	●	●
ceramill® a-splint	PMMA splints	Wet & Dry	●	●	●	●
ceramill® m-plast	Polyurethane	Dry	●	●	●	●
ceramill® d-wax/VITA VIONIC®	Denture wax/acrylic	Wet	●	●	●	●
ceramill® ti-forms	Titanium	Wet	●	●	●	●
ceramill® peek	Polyetheretherketone	Wet & Dry	●	●	●	●
VITA SUPRINITY® PC	Zirconia reinforced glass ceramic	Wet	●	●	●	●
VITA ENAMIC®	Hybrid ceramic	Wet	●	●	●	●
VITABLOCS® Mark II/ TriLux forte	Feldspar ceramic	Wet	●	●	●	●

Indications

	ceramill® mikro 4x Dry	ceramill® mikro 5x Dry	ceramill® mikro ic 4x Wet	ceramill® motion 2 5x Wet & Dry
Anatomically reduced crown/bridge	●	●	●	●
Fully anatomical crown/bridge	●	●	●	●
Implant bridge with gingiva section	●	●	●	●
Inlay/Onlay/Veneer	●	●	●	●
Fully anatomical overpress	●	●	●	●
Telescopic crowns	●	●	●	●
Attachment	●	●	●	●
Titanium abutment (customised)	●	●	●	●
Bridge on conical titanium bases	●	●	●	●
Multi-unit, screw-retained restorations	●	●	●	●
Bar on titanium base	●	●	●	●
Splint	●	●	●	●
Eggshell temporary restoration	●	●	●	●
Full denture	●	●	●	●
Digital model fabrication	●	●	●	●

Milling Machines

AMANN GIRRBACH CERAMILL® MOTION 2

Type:	Wet & Dry
Axes:	5
Accuracy:	<10µm
Speed:	100,000 rpm

Code	Size	Dimensions
AG179250N	78kg	595 x 530 x 780mm



AMANN GIRRBACH CERAMILL® MIKRO IC

Type:	Wet
Axes:	4
Accuracy:	<10µm
Speed:	100,000 rpm

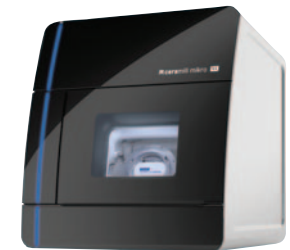
Code	Size	Dimensions
AG179600N	70kg	465 x 580 x 585mm



AMANN GIRRBACH CERAMILL® MIKRO 5X

Type:	Dry
Axes:	5
Accuracy:	<10µm
Speed:	60,000 rpm

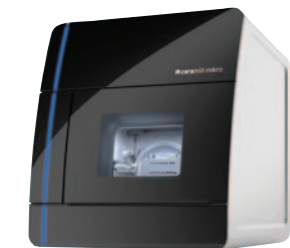
Code	Size	Dimensions
AG179330N	50kg	465 x 515 x 585mm



AMANN GIRRBACH CERAMILL® MIKRO 4X

Type:	Dry
Axes:	4
Accuracy:	<10µm
Speed:	60,000 rpm

Code	Size	Dimensions
AG179300N	50kg	465 x 515 x 585mm



Milling Machines

AMANN GIRRBACH CERAMILL® MATIK

The ceramill® matik marks the dawn of a new era in in-house fabrication. As an intelligent production solution, it clearly sets itself apart from conventional milling machines with its blank changers. The fully integrated fabrication unit offers the laboratory the possibility to design its workflow independently and flexibly. It dramatically reduces the effort and complexity of tool and material management. Automatic maintenance and cleaning saves time and helps the technician focus on the essential day-to-day work.

Key Features

- ▶ DNA performance processing: carving, thrilling, speed milling
- ▶ Automatic maintenance and cleaning – manual cleaning not required
- ▶ Seamlessly move from one material to another
- ▶ Fully automatic tool and material management
- ▶ Highest performance and maximum diversity of materials and indications at the lowest possible investment.
- ▶ Cost savings due to controlled tool ware
- ▶ Autonomous wet/dry change

Specification

- ▶ 10X DNA control centre – the control unit: 10 axis control for activating the mechanics
- ▶ 10" Touchscreen – the operating element: Integrated and intuitive order management
- ▶ 36 x Blank Tank – the material manager: RFID supported stock management
- ▶ 100K Super High Frequency Spindle - the power pack: Hybrid bearing, high performance, super high frequency spindle (100.000 rpm)
- ▶ 26 x Tool Stock – the tool manager: RFID supported tool management with exchangeable tool magazine that automatically identifies and assigns the correct tool for the material
- ▶ 5X Processing Station – the milling unit: High quality dynamic and stable 5X system
- ▶ Interior HD camera – full view: Camera for remote monitoring of the production process
- ▶ ceramill® cleanstream –the automation specialist: Integrated self-cleaning system

Indications

- ▶ Crown/bridge full contour
- ▶ Inlays/Onlays
- ▶ Veneers
- ▶ Overpress full contour
- ▶ Telescopic crowns
- ▶ One/multi-part block abutments
- ▶ Individual titanium abutments
- ▶ Bridge on conical titanium bases
- ▶ Multi-pontic screw retained construction on titanium bases
- ▶ Bar on titanium bases
- ▶ Bite splints
- ▶ Eggshell temporaries
- ▶ Partial/full dentures
- ▶ Digital model creation

TECHNICAL DATA

AMANN GIRRBACH CERAMILL® MATIK

AG181200	
Dimension D/W/H (mm)	780/1265/1113
Weight empty (kg)	200
Power rating	100-230v 50/60 Hz
Output (W)	750
Speed (rpm)	100,000
Torque spindle (Ncm)	11
Collet (Ømm)	3
Axes	9
Type of drive	Closed loop

AMANN GIRRBACH CERAMILL® MATIK CLEANSTREAM

AG178660	
Dimension D/W/H (mm)	780/1262/1017
Weight empty (kg)	98
Power rating	100-230v 50/60 Hz
Output (W)	300
Coolant tank (ltr)	50

Milling Machines

ACCESSORIES

Code	Description
AG181201	Tool tray
AG181210	71mm blank holder
AG181211	98mmø blank holder
AG181212	CAD block AG holder
AG181213	CAD block universal holder
AG181214	TI-preforms holder
AG181215	D-wax holder
AG181216	D-set holder
AG181217	BDS holder
AG181218	Metal disc holder



TOOLS (RFID)

Zirconia (grey)

Code	Desc.
AG760660	2.5mmø
AG760661	1.0mmø
AG760662	0.6mmø
AG760663	0.3mmø

Diamond (orange)

Code	Desc.
AG760676	1.8mmø
AG760677	1.4mmø
AG760678	1.0mmø
AG760679	0.6mmø

PMMA Denture (pink)

Code	Desc.
AG760692	2.5mmø
AG760693	1.5mmø

Sintron (blue)

Code	Desc.
AG760664	2.5mmø
AG760665	1.0mmø
AG760666	0.6mmø
AG760667	0.3mmø

SC (yellow)

Code	Desc.
AG760680	2.5mmø
AG760681	1.0mmø
AG760682	0.6mmø
AG760683	0.3mmø

Drill (green)

Code	Desc.
AG760694	1.2mmø

PMMA/Wax (green)

Code	Desc.
AG760668	2.5mmø
AG760669	1.0mmø
AG760670	0.6mmø
AG760671	0.3mmø

DMB DC (white)

Code	Desc.
AG760684	2.5mmø
AG760685	1.0mmø
AG760686	0.6mmø
AG760687	0.3mmø

Denture Wax (red)

Code	Desc.
AG760696	3.0mmø
AG760695	1.0mmø

TI (black)

Code	Desc.
AG760672	2.0mmø
AG760673	1.0mmø

CoCr (brown)

Code	Desc.
AG760688	2.5mmø
AG760689	1.0mmø
AG760690	0.6mmø
AG760691	0.3mmø

Model Material (red)

Code	Desc.
AG760697	2.5mmø
AG760698	2.0mmø

Miscellaneous

CERAMILL® CODE SCANNER

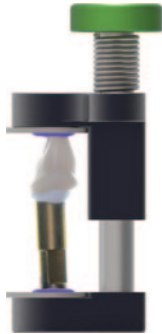
Barcode scanner used for the IntelliCode on every ceramill® material box, which transfers all the relevant blank information into the Match software.



Code: AG179195

CLIP

Unique device for the easy handling of hybrid abutments. The CLIP by Hans-Jürgen Joit offers consistent pressure while hardening, works with all types of implants, offers hands-free working without rotation.



Code: HPD309-0000

LISIFUSE

Transparent lithium silicate powder that fuses to any monolithic zirconia restoration and creates a micro thin lithium silicate coating with outstanding adhesion. Improves surface hardness for decreased antagonist abrasion and creates an outstanding high gloss finish.



Code	Size
HPD265-0075	75ml

CERAMILL® TEST BLANK

Test blank to aid the calibration of the ceramill® range of milling machines.



Code	Size	Dimensions
AG760301	20mm	71mm

FIXGEL

Temporary holding gel for zirconia, ceramics and PFM that burns out cleanly but will hold veneers, copings and crowns securely on the die.



Code	Pack	Size
HPD200-0000	2pcs	3.5ml

LISIFUSE CONNECT

Transparent lithium silicate powder that creates a bond between zirconia and any type of ceramic restoration. Intracoronary use allows etching of monolithic zirconia restorations before cementing, even on veneers. Suitable surface preparation is paramount.



Code	Size
HPD265-0050	50ml

PC Sets

PC STANDARD

Intel® I7, 16GB RAM, 256GB SSD + 1TB SATA, 5GB graphics card, Windows 10 and 21.5" monitor.

Code: AG179070

PC PREMIUM

Intel® I7 7820X, 32GB RAM, 1TB SSD, 8GB graphics card, Windows 10 and 27" monitor.

Code: AG179071



CERAMILL® MINDSERVE 4TB

A 4TB data server to network several ceramill® CAD/CAM workstations.

Code: AG179193

PEEK

CERAMILL® PEEK

Polyetheretherketone disc in a choice of two colours and sizes.

Code	Description	Size	Dimensions
AG760405	Natural	13mm	71mm
AG760406	Natural	20mm	71mm
AG760393	White	13mm	71mm
AG760394	White	20mm	71mm
AG760409	Natural	12mm	98mmø
AG760410	Natural	20mm	98mmø
AG760403	White	12mm	98mmø
AG760404	White	20mm	98mmø



PMMA

CERAMILL® A-CAST

Clear PMMA that burns out without residue.

Code	Size	Dimensions
AG761070	14mm	71mm
AG761071	20mm	71mm
AG761075	14mm	98mmø
AG761076	20mm	98mmø



CERAMILL® A-TEMP

Stained PMMA disc.

Code	Description	Size	Dimensions
AG761330	A1	14mm	71mm
AG761331	A1	16mm	71mm
AG761332	A1	20mm	71mm
AG761333	A2	14mm	71mm
AG761334	A2	16mm	71mm
AG761335	A2	20mm	71mm
AG761336	A3	14mm	71mm
AG761337	A3	16mm	71mm
AG761338	A3	20mm	71mm
AG761339	A3.5	14mm	71mm
AG761340	A3.5	16mm	71mm
AG761341	A3.5	20mm	71mm
AG761342	B2	14mm	71mm
AG761343	B2	16mm	71mm
AG761344	B2	20mm	71mm
AG761345	C2	14mm	71mm
AG761346	C2	16mm	71mm
AG761347	C2	20mm	71mm
AG761350	A1	14mm	98mmø
AG761351	A1	16mm	98mmø
AG761352	A1	20mm	98mmø
AG761353	A2	14mm	98mmø
AG761354	A2	16mm	98mmø
AG761355	A2	20mm	98mmø
AG761356	A3	14mm	98mmø
AG761357	A3	16mm	98mmø
AG761358	A3	20mm	98mmø



PMMA

CERAMILL® A-TEMP

Code	Description	Size	Dimensions
AG761359	A3.5	14mm	98mmø
AG761360	A3.5	16mm	98mmø
AG761361	A3.5	20mm	98mmø
AG761362	B2	14mm	98mmø
AG761363	B2	16mm	98mmø
AG761364	B2	20mm	98mmø
AG761365	C2	14mm	98mmø
AG761366	C2	16mm	98mmø
AG761367	C2	20mm	98mmø



CERAMILL® A-TEMP BLOCKS

Code	Description	Pack	Dimensions
AG761370	A1	3pcs	40 x 19mm
AG761371	A2	3pcs	40 x 19mm
AG761372	A3	3pcs	40 x 19mm
AG761373	A3.5	3pcs	40 x 19mm
AG761374	B2	3pcs	40 x 19mm
AG761375	C2	3pcs	40 x 19mm
AG761378	A1	3pcs	55 x 19mm
AG761379	A2	3pcs	55 x 19mm
AG761380	A3	3pcs	55 x 19mm
AG761381	A3.5	3pcs	55 x 19mm
AG761382	B2	3pcs	55 x 19mm
AG761383	C2	3pcs	55 x 19mm

Supplied with the Amann Girrbach holder.

Code	Description	Pack	Dimensions
AG761248	A1	3pcs	40 x 19mm
AG761249	A2	3pcs	40 x 19mm
AG761250	A3	3pcs	40 x 19mm
AG761251	A3.5	3pcs	40 x 19mm
AG761252	B2	3pcs	40 x 19mm
AG761253	C2	3pcs	40 x 19mm
AG761259	A1	3pcs	55 x 19mm
AG761260	A2	3pcs	55 x 19mm
AG761261	A3	3pcs	55 x 19mm
AG761262	A3.5	3pcs	55 x 19mm
AG761263	B2	3pcs	55 x 19mm
AG761264	C2	3pcs	55 x 19mm

Supplied with the universal holder for use with 3rd party machines.



PMMA

CERAMILL® A-TEMP MULTILAYER

Stained PMMA disc with shade gradient.

Code	Description	Size	Dimensions
AG761040	O/A1	14mm	71mm
AG761041	O/A1	16mm	71mm
AG761042	O/A1	20mm	71mm
AG761043	A2/A3	14mm	71mm
AG761044	A2/A3	16mm	71mm
AG761045	A2/A3	20mm	71mm
AG761046	B2/B3	14mm	71mm
AG761047	B2/B3	16mm	71mm
AG761048	B2/B3	20mm	71mm
AG761049	C1/C2	14mm	71mm
AG761050	C1/C2	16mm	71mm
AG761051	C1/C2	20mm	71mm
AG761055	O/A1	14mm	98mmø
AG761056	O/A1	16mm	98mmø
AG761057	O/A1	20mm	98mmø
AG761058	A2/A3	14mm	98mmø
AG761059	A2/A3	16mm	98mmø
AG761060	A2/A3	20mm	98mmø
AG761061	B2/B3	14mm	98mmø
AG761062	B2/B3	16mm	98mmø
AG761063	B2/B3	20mm	98mmø
AG761064	C1/C2	14mm	98mmø
AG761065	C1/C2	16mm	98mmø
AG761066	C1/C2	20mm	98mmø

Supplied with the Amann Girrbach holder.



PMMA

CERAMILL® A-TEMP MULTILAYER BLOCKS

Stained PMMA disc with shade gradient.

Code	Description	Pack	Dimensions
AG761386	O/A1	3pcs	40 x 19mm
AG761387	A2/A3	3pcs	40 x 19mm
AG761388	B2/B3	3pcs	40 x 19mm
AG761389	C1/C2	3pcs	40 x 19mm
AG761392	O/A1	3pcs	55 x 19mm
AG761393	A2/A3	3pcs	55 x 19mm
AG761394	B2/B3	3pcs	55 x 19mm
AG761395	C1/C2	3pcs	55 x 19mm

Supplied with the Amann Girrbach holder.

Code	Description	Pack	Dimensions
AG761270	O/A1	3pcs	40 x 19mm
AG761271	A2/A3	3pcs	40 x 19mm
AG761272	B2/B3	3pcs	40 x 19mm
AG761273	C1/C2	3pcs	40 x 19mm
AG761279	O/A1	3pcs	55 x 19mm
AG761280	A2/A3	3pcs	55 x 19mm
AG761281	B2/B3	3pcs	55 x 19mm
AG761282	C1/C2	3pcs	55 x 19mm

Supplied with the universal holder for use with 3rd party machines.



PMMA

INOVACAM ESTHETICA

Premium multilayer PMMA for temporaries and final restorations. Hugely dense for unequalled plaque resistance. Seamless shade graduation and expected wear time of more than **6 years**.

Code	Description	Size	Dimensions
HPD250-1601	BL2 Multi Chroma	16mm	98mmø
HPD250-2001	BL2 Multi Chroma	20mm	98mmø
HPD250-2501	BL2 Multi Chroma	25mm	98mmø
HPD250-1602	A1-A2	16mm	98mmø
HPD250-2002	A1-A2	20mm	98mmø
HPD250-2502	A1-A2	25mm	98mmø
HPD250-1603	A2-A3	16mm	98mmø
HPD250-2003	A2-A3	20mm	98mmø
HPD250-2503	A2-A3	25mm	98mmø
HPD250-1604	A3-A3.5	16mm	98mmø
HPD250-2004	A3-A3.5	20mm	98mmø
HPD250-2504	A3-A3.5	25mm	98mmø
HPD250-1606	B1-B2	16mm	98mmø
HPD250-2006	B1-B2	20mm	98mmø
HPD250-2506	B1-B2	25mm	98mmø
HPD250-1607	B2-B3	16mm	98mmø
HPD250-2007	B2-B3	20mm	98mmø
HPD250-2507	B2-B3	25mm	98mmø
HPD250-1608	C1-C2	16mm	98mmø
HPD250-2008	C1-C2	20mm	98mmø
HPD250-2508	C1-C2	25mm	98mmø
HPD250-1605	C2-C3	16mm	98mmø
HPD250-2005	C2-C3	20mm	98mmø
HPD250-2505	C2-C3	25mm	98mmø



INOVACAM ESTHETICA PINK

Multilayer PMMA plus premium pink for temporaries and final restorations. Hugely dense for unequalled plaque resistance, seamless shade graduation and expected wear time of up to **8 years**.

Code	Description	Size	Dimensions
HPD250-2509	Pink + A1-A2	25mm	98mmø
HPD250-2510	Pink + A2-A3	25mm	98mmø



PMMA

INOVACAM CLEAR

Premium medical grade PMMA for splints, surgical guides, castables and pressables. Mills equally well wet or dry and with a high fracture resistance.

Code	Size	Dimension
HPD251-1601	16mm	98mmø
HPD251-2001	20mm	98mmø



INOVACAM STRONG

Premium translucent high performance polymer combining resilience, flexibility and aesthetics. Incredible fracture resistance allowing the manufacture of all metal free and biocompatible structures, including frameworks and bars. Excellent bond to all composites and polymers.

Code	Description	Size	Dimensions
HPD252-2001	A2	20mm	98mmø
HPD252-2501	A2	25mm	98mmø
HPD252-2002	A3	20mm	98mmø
HPD252-2502	A3	25mm	98mmø
HPD252-2003	Natural White	20mm	98mmø
HPD252-2503	Natural White	25mm	98mmø



TRILOR™

Millable high performance technopolymer disc, with a thermoset resin matrix and multi-directional glass fibre reinforcement. Incredibly strong and can be used as an alternative to most metal based indications.

Code	Description	Size	Dimensions
HPD500-0016	Ivory	16mm	98mmø
HPD500-0020	Ivory	20mm	98mmø
HPD500-0025	Ivory	25mm	98mmø

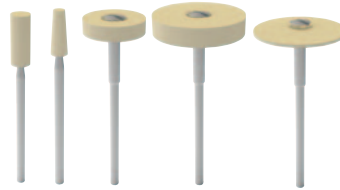


Polishers

YELLOSTONE

Next generation diamond abrasive for all types of zirconia, lithiumsilicate, ceramics and composite restorations. With minimal heat transference, high levels of abrasion and a smooth surface pattern, the YelloStone polishers can be used on sintered or green state zirconia.

Code	Description	Pack
HPD206-0001	Small barrel	1pc
HPD206-0002	Small cone	1pc
HPD206-0003	Small disc	1pc
HPD206-0004	Large disc	1pc
HPD206-0005	Tapered disc	1pc



P3.POLISH

Ultimate diamond polishers for all types of zirconia, lithiumsilicate, ceramics and composite restorations. This one-step polishing system will take you from pre-polishing to a high lustre finish without having to change tools. Highly durable with minimal amount of heat transference.

Code	Description	Pack
HPD207-0001	Point	1pc
HPD207-0002	Small disc	1pc
HPD207-0003	Large disc	1pc
HPD207-0004	Tapered disc	1pc



VITA SUPRINITY® POLISHING SET

The VITA SUPRINITY® Polishing Sets were developed for reliable, efficient and material-specific surface treatment of zirconia reinforced lithium silicate ceramic (ZLS) restorations in laboratories. The set includes various polishing instruments for pre and high gloss polishing. These instruments are suitable for careful and gentle polishing of occlusal surfaces, cusps, fissures and restoration contact points. They ensure a brilliant shine on the finished restoration. The set is comprised of 4 x pre polishers and 4 x high gloss polishers.

Code: VELSPSETT

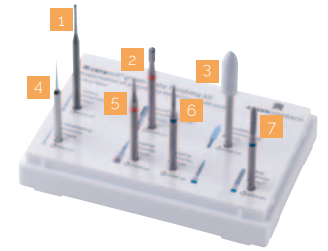


Polishers

CERAMILL® GREEN STATE FINISHING KIT

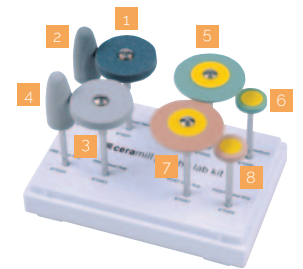
For preparing pre-sintered zirconia or sintering metal.

Code	No.	Description	Pack
AG875520		Complete Finishing Starter Kit	7pcs
AG875521	1	Separating cutter for removing from the blank	
AG875522	2	Cross Cut Carbide Cutter (for trimming connector bars)	2pcs
AG875523	3	Universal Polisher (for smoothing the surface)	5pcs
AG875524	4	Squared Cutter (for creating fissures)	2pcs
AG875525	5	Small Carbide Cutter (for reworking fissures)	2pcs
AG875526	6	Diamond Rotary (for reworking fissures)	5pcs
AG875527	7	Diamond Rotary (for creating labial texture)	5pcs



CERAMILL® LABORATORY POLISHING KIT

Code	No.	Description	Pack
AG875500		Complete Polishing Starter Kit	8pcs
AG875501	1	PRE-Wheel (w/out mandrel) Medium Grain	10pcs
AG875502	2	PRE-Cone Medium Grain	10pcs
AG875503	3	PRE-Wheel (w/out mandrel) Fine grain	10pcs
AG875504	4	PRE-Cone Fine Grain	10pcs
AG875505	5	POST-Disc Medium Grain	2pcs
AG875506	6	POST-Wheel Medium grain	4pcs
AG875507	7	POST-Disc Fine grain	2pcs
AG875508	8	POST-Wheel fine grain	4pcs



Prosthetic Systems

CERAMILL® FDS

Code	Description	Pack	Size
AG760018	ceramill® Full Denture System starter kit		
AG179282	ceramill® motion 2 d-wax Holder	1pc	
AG179283	ceramill® motion 2 Holder for Denture Teeth	1pc	
AG760570	ceramill® d-wax	2pcs	30mm
AG760301	ceramill® Test Blank	1pc	
AG179285	Storage Bar Blank Holder	1pc	
AG760630	Roto SF Green	1pc	1.2mmø
AG760631	Roto Red	1pc	1mmø
AG760633	Roto Red	1pc	3mmø
AG760609	Roto DMB DC	1pc	1mmø
AG760608	Roto DMB DC	1pc	2.5mmø
AG179977	Spindle Cap	1pc	5 x 3mmø



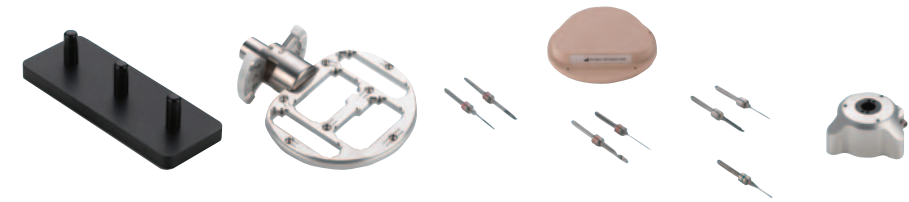
CERAMILL® FDS/VITA VIONIC® MATERIAL



Code	Description	Pack	Dimensions
AG760019	Material starter kit for ceramill® FDS/VITA VIONIC®		
VADOP9830	VITA VIONIC® BASE, Orange -Pink x 30mm	1pc	98mmø
VADDP9830	VITA VIONIC® BASE Deep-Pink x 30mm	1pc	98mmø
VADW9830	VITA VIONIC® WAX White x 30mm	1pc	98mmø
VADP9830	VITA VIONIC® WAX Pink x 30mm	1pc	98mmø
VADgVBK	VITA VIONIC® BOND KIT	1pc	
VA3T46	VITAPAN EXCELL® DD FRAME A3 T46	1pc	
VA3L35	VITAPAN EXCELL® DD FRAME A3 L35	1pc	
VA322LO	VITAPAN® LINGOFORM DD FRAME 22L OK (upper)	1pc	
VA322LU	VITAPAN® LINGOFORM DD FRAME 22L UK (lower)	1pc	
VC44233F3	VITAVM®LC flow GINGIVA G3	1pc	
VC44181F3	VITAVM®LC flow WINDOW	1pc	
VCVMLM10	VITAVM®LC MODELLING LIQUID 10ml	1pc	

Prosthetic Systems

CERAMILL® FDS/VITA VIONIC® HARDWARE



Code	Description	Pack	Size
AG760020	Hardware starter kit for ceramill® FDS/VITA VIONIC		
AG179283	ceramill® motion 2 Holder for Denture Teeth	1pc	
AG760631	Roto Red	1pc	1mmø
AG760633	Roto Red	1pc	3mmø
AG760609	Roto DMB DC	1pc	1mmø
AG760608	Roto DMB DC	1pc	2.5mmø
AG760642	Roto Pink	1pc	2.5mmø
AG760643	Roto Pink	1pc	1.5mmø
AG760630	Roto SF Green	1pc	1.2mmø
AG760301	ceramill® Test Blank	1pc	
AG179977	Spindle Cap	1pc	5x 3mmø
AG179285	Storage Bar Blank Holder	1pc	

BDS FOR CERAMILL®

Code	Description	Pack	Size
AG760044	Dentist starter kit for BDS for ceramill®		
AG1032110	Baltic Denture System BDKEY Set	1pc	
AG1032140	Baltic Denture System BDKEY PMMA S	2pcs	
AG1032141	Baltic Denture System BDKEY PMMA M	2pcs	
AG1032142	Baltic Denture System BDKEY PMMA L	2pcs	
AG1032126	Baltic Denture System BDImpress	1pc	200g

Prosthetic Systems

CERAMILL® BDS MATERIAL

Code	Description	Pack
AG760045	Laboratory material starter kit for BDS for ceramill®	
AG1032204	Baltic Denture System BDLoad Sw6 A2 Light Pink	1pc
AG1032205	Baltic Denture System BDLoad UK Sw6 A2 Light Pink	1pc
AG1032210	Baltic Denture System BDLoad Mn6 A2 Light Pink	1pc
AG1032211	Baltic Denture System BDLoad UK Mn6 A2 Light Pink	1pc
AG1032216	Baltic Denture System BDLoad Mm6 A2 Light Pink	1pc
AG1032217	Baltic Denture System BDLoad UK Mm6 A2 Light Pink	1pc
AG1032222	Baltic Denture System BDLoad Mw6 A2 Light Pink	1pc
AG1032223	Baltic Denture System BDLoad UK Mw6 A2 Light Pink	1pc

CERAMILL® BDS HARDWARE



Code	Description	Pack	Size
AG760046	Laboratory hardware starter kit for BDS for ceramill®		
AG179139	Impression Tray Holder	1pc	
AG179134	BD Key Scan Holder	1pc	
AG179328	Blank Holder M2 Baltic Denture	1pc	
AG760642	Roto Pink	1pc	2,5mmø
AG760643	Roto Pink	1pc	1,5mmø
AG760630	Roto SF Green	1pc	1,2mmø
AG760301	ceramill® Test Blank	1pc	
AG179285	Storage Bar Blank Holder	1pc	

Scanners

DENTAURUM ORTHOX®

The 3D model scanner orthoX® scan and the integrated archiving software orthoX® file offers a simple user interface with a Model Wizard for logical, step-by-step guidance through each stage of adding a base to models and archiving. Patient models are saved in open STL files that enable free data use as well as digital model archiving. The data can also be used for analysing and creating models in the 3D-printing technique. There is also the possibility of utilising digital treatment solutions such as aligner therapy or digitally planned, highly precise indirect bonding techniques. The intuitive scanning requires only a few simple steps and settings whilst the sophisticated stripe-light projection technology enables a high scanning accuracy of <math><20\mu\text{m}</math> and a scan duration of only 45 seconds per jaw. Thanks to its compact size and design, the scanner is a space-saving desktop solution and the metal housing of the unit is both impact resistant and easy to clean.



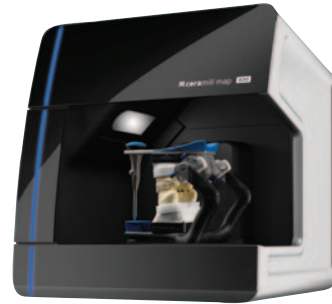
Code	Size	Dimensions
38075-000-00	9kgs	360 x 295 x 170mm

Scanners

AMANN GIRRBACH CERAMILL® MAP 200+



AMANN GIRRBACH CERAMILL® MAP 600



Code	Size	Dimensions
AG179130NC	11kgs	390 x 360 x 310mm

Code	Size	Dimensions
AG179560	25kgs	415 x 424 x 469mm

	ceramill® map 200+	ceramill® map 600
Accuracy (µm) (DIN EN ISO 12836:2013-01)	6	4
Accuracy (µm) Implant Bars	10	10
Axes	2	3
Full Arch Scan (sec)	18	18
Single Die with ceramill multicap (sec)	4.5	4.5
Multi-Die	●	●
Impression Scan/Triple Tray	●	●
Texture and Colour Scan	●	●
DNA Speed Scanning	●	●
Universal Scan	●	●
Splitex Integration	●	●
Background Matching	●	●
Open Scanning	●	●
All-in-Scan		●
Articulator Scan		●
Fixator Scan		●
Autofocus (automatic positioning of model)		●
HD Scan		●
Blue Light Technology		●

Scanner Accessories

CERAMILL® INTELLIGENT MULTI DIE

Scans up to 12 dies with automatic alignment of the model.



Code: AG179115

CERAMILL® UNIVERSAL SCAN

Universal carrier plate that allows for the scanning of different tray systems.



Code: AG179118

CERAMILL® ALL-IN

Quick and easy digitisation of quadrant models, with the automatic alignment of three dies.



Code: AG179135

CERAMILL® IMPRESSION SCAN

Fully automatic impression scanner.



Code: AG179139

CERAMILL® TRANSFER KIT

Suitable for all Map 400's, this holder will aid in digitising models with jaw relation.



Code: AG179113

Sintering Furnaces

AMANN GIRRBACH CERAMILL® THERM 3

Fully automatic high performance furnace for final sintering of distortion free zirconium oxide frameworks.

- ▶ 250 sintering programs including 3 for Amann Girrbach materials
- ▶ 3 stackable sintering bowls for maximum utilisation of the furnace
- ▶ Sintering at the press of a button – very easy operation with touch screen technology
- ▶ Cost effective and reliable



Code	Size	Dimensions
AG178380	30kg	500 x 461 x 480mm

SINTERING PEARLS

1mm pearls for sintering Zirconia.

Code	Size
AG178311	200g

HEATING ELEMENT

It is advisable to change all elements at the same time.

Code	Pack
AG178312	1pc

STACKABLE SINTERING BOWL

Maximum of three bowls can be used at once.

Code	Pack
AG178382	1pc

AMANN GIRRBACH CERAMILL® THERM S

The ceramill® therm s has the capability of sintering a single restoration in only **2 hours**. The compact, energy efficient furnace has a range of applications. These would include the capability of sintering up to a six unit restoration, the Autodry® drying function and glaze firing cycles. The 10.4" intuitive touch screen display can be connected to the internet, enabling fast transference of protocols and updates.

Code	Size	Dimensions
AG179390	23kg	383 x 780 x 343mm



Sintering Furnaces

AMANN GIRRBACH CERAMILL® ARGOTHERM 2

CoCr sintering furnace for the exclusive use of the revolutionary material ceramill sintron®. The "core" of the system, the ceramill® argovent 2.0, ensures minimal consumption of argon gas and homogeneous, distortion-free sintering of the metal restorations. Fitted with a touch screen and a clear display, the furnace is not only easy to use thanks to its one touch operation but compact and reliable.



Code	Size	Dimensions
AG178740	30kg	468 x 461 x 480 mm

PRESSURE REDUCER

Interface between the ceramill® argotherm 2 and the argon gas.

Code
AG178706

HEATING ELEMENT

It is advisable to change all elements at the same time.

Code	Pack
AG178741	1pc

SINTER PEARLS

Pearls for CoCr sintering.

Code	Size
AG178755	150g

CERAMILL SINTRON® ADDITIONAL POWDER

Powder additive for the ceramill sintron® pearls.

Code	Size
AG178729	10g

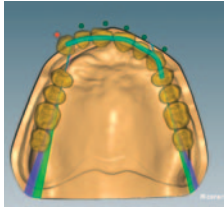
AMANN GIRRBACH CERAMILL® ARGOVENT 2.0

Improved system now includes sinter base, sintering tray, sinter hood, shielding gas retort, sinter beads and ceramill® argovent tongs.

Code
AG178745

Software

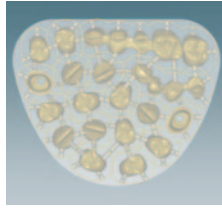
CERAMILL® MIND + MATCH 2



Design and nesting software.

Code: AG179156

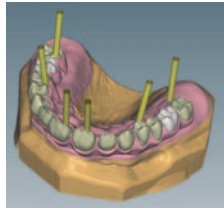
CERAMILL® MATCH 2



For nesting designs onto material blocks ready for milling.

Code: AG179164

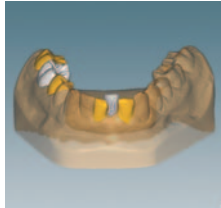
CERAMILL® M-GIN



To design gingiva areas.

Code: AG179145

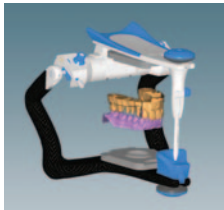
CERAMILL® MICROSHELL



To design temporary eggshell crowns.

Code: AG179148

CERAMILL® ARTEX



Digital fully adjustable articulator.

Code: AG179151

CERAMILL® M-PLANT



To design customised abutments and screw retained bridgework.

Code: AG179152

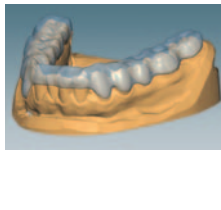
CERAMILL® MINDFORMS 2.0 BY KNUT MILLER



Additional tooth library with better anatomy for more natural looking restorations.

Code: AG179700

CERAMILL® M-SPLINT

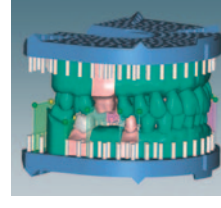


To design therapeutic splints.

Code: AG179165

Software

CERAMILL® M-BUILD



To design models for milling/printing.

Code: AG179167

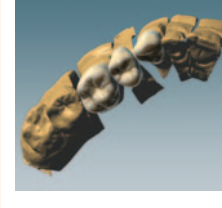
CERAMILL® M-BARS



To design implant retained bars.

Code: AG179166

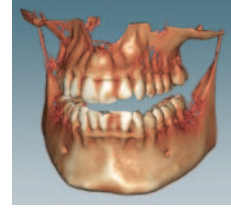
CERAMILL® TRUSMILE



Gives your digital image natural shading and aesthetics.

Code: AG179155

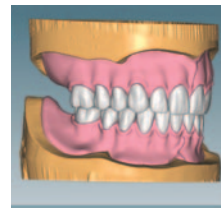
CERAMILL® DICOM VIEWER



Import DICOM data (x-rays, CT or MRI scans).

Code: AG179146

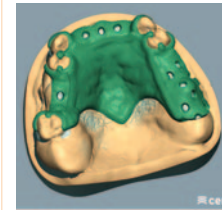
CERAMILL® D-FLOW



To design full prosthetic dentures.

Code: AG179147

CERAMILL® M-PART



To design partial denture frameworks.

Code: AG179702

Splint Material

CERAMILL® A-SPLINT

PMMA material for acrylic splints. Registered as a Class 2a medical device that is suitable for long-term use of up to 3 years.

Code	Size	Dimensions
AG761080	14mm	71mm
AG761081	16mm	71mm
AG761082	20mm	71mm
AG761084	14mm	98mmø
AG761085	16mm	98mmø
AG761086	20mm	98mmø



Staining

CERAMOTION® PASTE GLAZE

Highly fluorescent glaze paste, particularly suitable for zirconia and lithium disilicate monolithic restorations.

Code	Size
38250-271-03	3g



CERAMOTION® PASTE GLAZE BRIGHT

Has the same outstanding characteristics as CeraMotion® Paste Glaze but with even more fluorescence, making the restoration 'brighter'.

Code	Size
38250-272-03	3g



CERAMOTION® PASTE GLAZE LIQUID

Code	Size
38254-006-02	20ml



Staining

CERAMOTION® ONE TOUCH SET

Easy to use and fast handling, aesthetic finishing system for fully anatomical restorations. The system includes brushes and each of the following, which can also be bought separately.

Code: 38250-800-70

Code	Description	Size
38250-300-03	3D Incisal	3g
38250-301-03	3D Lumin	3g
38250-302-03	3D Neutral	3g
38250-303-03	3D Opal Blue	3g
38250-304-03	3D Opal Grey	3g
38250-305-03	3D Opal Honey	3g
38250-306-03	2D Body A	3g
38250-307-03	2D Body B	3g
38250-308-03	2D Body C	3g
38250-309-03	2D Body D	3g
38250-310-03	2D White	3g
38250-311-03	2D Grey	3g
38250-312-03	2D Honey	3g
38250-313-03	2D Blue	3g
38250-314-03	2D Violet	3g
38254-014-01	One Touch Refreshing Liquid	10ml
38254-012-01	One Touch Diluting Liquid	10ml



For more information about the complete CeraMotion® One Touch system, please see from page p102.

CERAMILL® STAIN AND GLAZE

Code	Description	Pack
AG760349	ceramill® stain and glaze kit, includes all of the shades and associated liquids.	19pcs
AG760038	ceramill® stain and glaze starter kit, includes a selection of shades and associated liquids.	12pcs

Code	Description	Size
AG760351	Stain Yellow	4g
AG760352	Stain Orange	4g
AG760353	Stain Blue	4g
AG760354	Stain Grey	4g
AG760355	Stain White	4g



Staining

CERAMILL® STAIN AND GLAZE

Code	Description	Size
AG760369	Stain Violet	4g
AG760363	Stain Red	4g
AG760364	Stain Gingiva	4g
AG760365	Stain Brow	4g
AG760366	Stain Eggshell	4g
AG760367	Stain Bleach	4g
AG760368	Stain Dark Brown	4g
AG760356	Stain A	4g
AG760357	Stain B	4g
AG760358	Stain C	4g
AG760359	Stain D	4g
AG760361	Stain & Glaze Working Liquid	25ml
AG760362	Stain & Glaze Reflow Liquid	8ml



CERAMILL® CL LIQUID FOR ZI WHITE

Code	Description	Size
AG760471	CL1	100ml
AG760472	CL2	100ml
AG760473	CL3	100ml
AG760474	CL4	100ml
AG760476	CL OR	100ml
AG760477	CL GR	100ml



CERAMILL® LIQUID FOR ZOLID WHITE

The ceramill® Liquid "new formula" set contains: A2, A3, A3.5, B3, OR, GR, RO, VIO, Dimmer Liquid small, Liquid Brush Size 1, Liquid Brush Size 3 and accessories.

Code: AG760469

Code	Description	Size
AG760430	A1	100ml
AG760432	A2	100ml
AG760433	A3	100ml
AG760434	A3.5	100ml
AG760435	A4	100ml
AG760436	B1	100ml
AG760437	B2	100ml



Staining

CERAMILL® LIQUID FOR ZOLID WHITE

Code	Description	Size
AG760438	B3	100ml
AG760439	B4	100ml
AG760440	C1	100ml
AG760442	C2	100ml
AG760443	C3	100ml
AG760444	C4	100ml
AG760445	D2	100ml
AG760446	D3	100ml
AG760447	D4	100ml
AG760485	RO	50ml
AG760486	GIN	50ml
AG760487	VIO	50ml
AG760488	OR	50ml
AG760489	GR	50ml



CERAMILL® LIQUID ACCESSORIES

Code	Description	Pack
AG760449	ceramill® Dimmer Liquid Refill	1pcs
AG760450	ceramill® Liquid Colour Tub	10pcs
AG760480	ceramill® Liquid Eye	4 x 25ml
AG760478	ceramill® Liquid Brush Size 1	4pcs
AG760479	ceramill® Liquid Brush Size 3	4pcs

FASTHETIX LIQUID STARTER KIT ESSENTIAL

Staining solutions for the fast staining technique for Zolid FX White, Zolid HT+ and ZI. Contents: A1, A2, A3, A3.5, B1, B2, C2, D3, ceramill® Dimmer Liquid small, ceramill® Liquid Eye Blue, ceramill® Liquid Brush Size 1, ceramill® Liquid Brush Size 3, plastic tweezers and timer.

Code	Pack
AG761397	14pcs



Staining

FASTHETIX LIQUID STARTER KIT

Staining solutions for the fast staining technique for Zolid FX White, Zolid White and ZI. Contents: 16 x A-D Liquids, ceramill® Dimmer Liquid small, ceramill® Liquid Eye Blue, ceramill® Liquid Brush Size 1, ceramill® Liquid Brush Size 3, plastic tweezers, eight colour tubs and timer.

Code	Pack
AG761398	30pcs

CERAMILL® LIQUID FX

ceramill® Liquid FX set containing 4 x 100ml colouring liquids (A2, A3, A3.5, B3), 4 x 50ml effect shades (OR, GR, VIO, BL), ceramill® Liquid Brush Size 1, ceramill® Liquid Brush Size 3, tubs, tweezers and timer.

Code: AG761400

Code	Description	Size
AG761401	A1	100ml
AG761402	A2	100ml
AG761403	A3	100ml
AG761404	A3.5	100ml
AG761405	A4	100ml
AG761406	B1	100ml
AG761407	B2	100ml
AG761408	B3	100ml
AG761409	B4	100ml
AG761410	C1	100ml
AG761411	C2	100ml
AG761412	C3	100ml
AG761413	C4	100ml
AG761414	D2	100ml
AG761415	D3	100ml
AG761416	D4	100ml
AG761417	OR	100ml
AG761418	GR	100ml
AG761419	RO	100ml
AG761420	GIN	100ml
AG761421	VIO	100ml
AG761422	BL	100ml



Titanium Bases

Comprising a comprehensive range of systems, the titanium bases are available as a laboratory implant, titanium abutment blank, titanium base, scan body and screw parts.



Compatible implant systems from Amann Girschbach:

- ▶ Astra Tech - OsseoSpeed®
- ▶ Biomet 3i - OSSEOTITE®, Certain®
- ▶ Straumann® - synOcta®, Bone Level
- ▶ Nobel Biocare - NobelActive®, Brånemark, Replace Select
- ▶ Zimmer - Tapered Screw-Vent®
- ▶ Dentsply Friadent - Frialit/Xive®
- ▶ Camlog - CONELOG®

Compatible implant systems from MEDENTiKA®:

- ▶ B-Series compatible with Bredent Medical | SKY
- ▶ BS-Series compatible with BEGO Implant Systems® | Semados® S-Line | Semados® RS/R SX-Line | Semados® RI-Line
- ▶ C-Series compatible with ALTATEC | CAMLOG® SCREW-LINE | CAMLOG® ROOT-LINE 2
- ▶ CX-Series compatible with Medentis Medical | ICX®
- ▶ D-Series compatible with ALTATEC | CONELOG®
- ▶ E-Series compatible with Nobel Biocare | NobelReplace Tapered
- ▶ EV-Series compatible with Dentsply Implants | Astra Tech OsseoSpeed® EV
- ▶ F-Series compatible with Nobel Biocare | Nobel Active®
- ▶ NobelReplace Conical
- ▶ H-Series compatible with Biomet 3i | Certain®
- ▶ I-Series compatible with Biomet 3i | External Hex
- ▶ K-Series compatible with Nobel Biocare | Brånemark
- ▶ L-Series compatible with Straumann® | Bone Level
- ▶ N-Series compatible with Straumann® | Tissue Level
- ▶ R-Series compatible with Zimmer Dental | MIS | BioHorizons
- ▶ S-Series compatible with Dentsply Implants | Astra Tech OsseoSpeed® TX
- ▶ T-Series compatible with Dentsply Implants | XIVE® S
- ▶ Y-Series compatible with Dentsply Implants | ANKYLOS®

Original system partners and authorised implant components:

- ▶ Straumann® BoneLevel
- ▶ Straumann® synOcta®
- ▶ MIS® C1, V3, Seven, M4
- ▶ BEGO Implant Systems Semados®

Please contact us for more information.

Wax

KEYMILL™ FLEX WAX DISC

The KeyMill™ Flex Wax Disc has both a flexible yet durable wax composition, which allows removable partial denture frames to be milled for investment casting. Due to the fine composition, the milling result is very precise. It is rigid but flexible enough to maintain the exact clarity and definition of the clasps.

Code	Size	Dimensions
39KMFWD20	20mm	98mmø
39KMFWD25	25mm	98mmø



WAX PRESS™ ESTHETIC

Dentine shaded wax milling discs for anatomically correct restorations.

Code	Description	Size	Dimensions
HPD10008-16	Dentine - Light	16mm	98mmø
HPD10008-20	Dentine - Light	20mm	98mmø
HPD10009-16	Dentine - Medium	16mm	98mmø
HPD10009-20	Dentine - Medium	20mm	98mmø
HPD10010-16	Dentine - Deep	16mm	98mmø
HPD10010-20	Dentine - Deep	20mm	98mmø
HPD30088-16	Dentine - Light	16mm	95mmø
HPD30088-20	Dentine - Light	20mm	95mmø
HPD30089-16	Dentine - Medium	16mm	95mmø
HPD30089-20	Dentine - Medium	20mm	95mmø
HPD30090-16	Dentine - Deep	16mm	95mmø
HPD30090-20	Dentine - Deep	20mm	95mmø
HPD20088-13	Dentine - Light	13mm	71mm
HPD20088-20	Dentine - Light	20mm	71mm
HPD20089-13	Dentine - Medium	13mm	71mm
HPD20089-20	Dentine - Medium	20mm	71mm
HPD20090-13	Dentine - Deep	13mm	71mm
HPD20090-20	Dentine - Deep	20mm	71mm
HPD20826	Addition Wax Dentine - Incisal	20g	
HPD20828	Addition Wax Dentine - Deep	20g	
HPD20830	Addition Wax Dentine - Light	20g	
HPD20832	Addition Wax Dentine - Medium	20g	



Wax

WAX PRESS™

These rigid milling discs burn out cleanly and are stable enough for all zirconia based restorations including bridges. The highly specified wax has no shrinkage and will not distort. The Wax Press™ Addition Wax complements the system and is used for any post milling adjustments that are required.

Code	Description	Size	Dimensions
HPD10002-16	Beige	16mm	98mmø
HPD10002-20	Beige	20mm	98mmø
HPD10004-16	Grey	16mm	98mmø
HPD10004-20	Grey	20mm	98mmø
HPD30082-16	Beige	16mm	95mmø
HPD30082-20	Beige	20mm	95mmø
HPD30080-16	Grey	16mm	95mmø
HPD30080-20	Grey	20mm	95mmø
HPD20082-13	Beige	13mm	71mm
HPD20082-20	Beige	20mm	71mm
HPD20080-13	Grey	13mm	71mm
HPD20080-20	Grey	20mm	71mm
HPD20820	Wax Press™ Addition Wax Beige	20g	
HPD20822	Wax Press™ Addition Wax Grey	20g	



CERAMILL® GREY WAX

High stability milling wax that can be cast, pressed or over-pressed.

Code	Size	Dimensions
AG760307	13mm	71mm
AG760302	20mm	71mm
AG760524	14mm	98mmø
AG760525	20mm	98mmø



Wax

CERAMILL® WHITE WAX

High stability milling wax.

Code	Size	Dimensions
AG760315	13mm	71mm
AG760313	20mm	71mm
AG760527	14mm	98mmø
AG760528	20mm	98mmø



CERAMILL® D-WAX

High stability pink wax for use with prosthetic systems.

Code	Size	Dimensions
AG760570	30mm	71mm



LT Zirconia

CERAMILL® ZI WHITE

High strength, low translucency zirconia. Flexural strength 1200 Mpa.

Code	Size	Dimensions
AG760172	12mm	71mm
AG760173	14mm	71mm
AG760174	16mm	71mm
AG760176	18mm	71mm
AG760184	20mm	71mm
AG760175	25mm	71mm



HT Zirconia

CERAMILL® ZOLID WHITE

Highly translucent zirconia. Flexural strength 1100 MPa.

Code	Size	Dimensions
AG760162	12mm	71mm
AG760163	14mm	71mm
AG760164	16mm	71mm
AG760165	18mm	71mm
AG760166	20mm	71mm
AG760167	25mm	71mm



HT Zirconia

CERAMILL® ZOLID HT+ WHITE

Highly translucent zirconia. 10% more translucent than ceramill® zolid white. Flexural strength 1100 MPa.

Code	Size	Dimensions
AG766009	10mm	71mm
AG766010	12mm	71mm
AG766011	14mm	71mm
AG766012	16mm	71mm
AG766013	18mm	71mm
AG766014	20mm	71mm
AG766016	25mm	71mm
AG766020	10mm	98mmø
AG766021	12mm	98mmø
AG766022	14mm	98mmø
AG766023	16mm	98mmø
AG766024	18mm	98mmø
AG766025	20mm	98mmø
AG766027	25mm	98mmø



CERAMILL® ZOLID HT+ PRESHADES

Super high translucent preshaded zirconia. Flexural strength 1000 MPa.

Code	Description	Size	Dimensions
AG766032	BL	14mm	71mm
AG766033	BL	16mm	71mm
AG766035	BL	20mm	71mm
AG766039	A1	14mm	71mm
AG766040	A1	16mm	71mm
AG766042	A1	20mm	71mm
AG766046	A2	14mm	71mm
AG766047	A2	16mm	71mm
AG766049	A2	20mm	71mm
AG766053	A3	14mm	71mm
AG766054	A3	16mm	71mm
AG766056	A3	20mm	71mm
AG766060	A3.5	14mm	71mm
AG766061	A3.5	16mm	71mm
AG766063	A3.5	20mm	71mm
AG766067	A4	14mm	71mm



HT Zirconia

CERAMILL® ZOLID HT+ PRESHADES

Code	Desc	Size	Dimensions	Code	Desc	Size	Dimensions
AG766068	A4	16mm	71mm	AG766160	A1	16mm	98mmø
AG766070	A4	20mm	71mm	AG766162	A1	20mm	98mmø
AG766074	B1	14mm	71mm	AG766166	A2	14mm	98mmø
AG766075	B1	16mm	71mm	AG766167	A2	16mm	98mmø
AG766077	B1	20mm	71mm	AG766169	A2	20mm	98mmø
AG766081	B2	14mm	71mm	AG766173	A3	14mm	98mmø
AG766082	B2	16mm	71mm	AG766174	A3	16mm	98mmø
AG766084	B2	20mm	71mm	AG766176	A3	20mm	98mmø
AG766088	B3	14mm	71mm	AG766180	A3.5	14mm	98mmø
AG766089	B3	16mm	71mm	AG766181	A3.5	16mm	98mmø
AG766091	B3	20mm	71mm	AG766183	A3.5	20mm	98mmø
AG766095	B4	14mm	71mm	AG766187	A4	14mm	98mmø
AG766096	B4	16mm	71mm	AG766188	A4	16mm	98mmø
AG766098	B4	20mm	71mm	AG766190	A4	20mm	98mmø
AG766102	C1	14mm	71mm	AG766194	B1	14mm	98mmø
AG766103	C1	16mm	71mm	AG766195	B1	16mm	98mmø
AG766105	C1	20mm	71mm	AG766197	B1	20mm	98mmø
AG766109	C2	14mm	71mm	AG766201	B2	14mm	98mmø
AG766110	C2	16mm	71mm	AG766202	B2	16mm	98mmø
AG766112	C2	20mm	71mm	AG766204	B2	20mm	98mmø
AG766116	C3	14mm	71mm	AG766208	B3	14mm	98mmø
AG766117	C3	16mm	71mm	AG766209	B3	16mm	98mmø
AG766119	C3	20mm	71mm	AG766211	B3	20mm	98mmø
AG766123	C4	14mm	71mm	AG766215	B4	14mm	98mmø
AG766124	C4	16mm	71mm	AG766216	B4	16mm	98mmø
AG766126	C4	20mm	71mm	AG766218	B4	20mm	98mmø
AG766130	D2	14mm	71mm	AG766222	C1	14mm	98mmø
AG766131	D2	16mm	71mm	AG766223	C1	16mm	98mmø
AG766133	D2	20mm	71mm	AG766225	C1	20mm	98mmø
AG766137	D3	14mm	71mm	AG766229	C2	14mm	98mmø
AG766138	D3	16mm	71mm	AG766230	C2	16mm	98mmø
AG766140	D3	20mm	71mm	AG766232	C2	20mm	98mmø
AG766144	D4	14mm	71mm	AG766236	C3	14mm	98mmø
AG766145	D4	16mm	71mm	AG766237	C3	16mm	98mmø
AG766147	D4	20mm	71mm	AG766239	C3	20mm	98mmø
AG766152	BL	14mm	98mmø	AG766243	C4	14mm	98mmø
AG766153	BL	16mm	98mmø	AG766244	C4	16mm	98mmø
AG766155	BL	20mm	98mmø	AG766246	C4	20mm	98mmø
AG766159	A1	14mm	98mmø	AG766250	D2	14mm	98mmø

HT Zirconia

CERAMILL® ZOLID HT+ PRESHADES

Code	Description	Size	Dimensions
AG766251	D2	16mm	98mmø
AG766253	D2	20mm	98mmø
AG766257	D3	14mm	98mmø
AG766258	D3	16mm	98mmø
AG766260	D3	20mm	98mmø
AG766264	D4	14mm	98mmø
AG766265	D4	16mm	98mmø
AG766267	D4	20mm	98mmø



SHT Zirconia

CERAMILL® ZOLID FX MULTILAYER BLOCKS

Polychromatic super high translucent block with indistinguishable shade graduation. Flexural strength 700 MPa.

Code	Description	Pack	Dimensions
AG761817	O/A1	3pcs	20 x 19mm
AG761818	O/A1	3pcs	40 x 19mm
AG761820	A2/A3	3pcs	20 x 19mm
AG761821	A2/A3	3pcs	40 x 19mm
AG761823	A3.5/A4	3pcs	20 x 19mm
AG761824	A3.5/A4	3pcs	40 x 19mm
AG761826	O/B1	3pcs	20 x 19mm
AG761827	O/B1	3pcs	40 x 19mm
AG761829	B2/B3	3pcs	20 x 19mm
AG761830	B2/B3	3pcs	40 x 19mm
AG761832	B3/B4	3pcs	20 x 19mm
AG761833	B3/B4	3pcs	40 x 19mm
AG761835	C1/C2	3pcs	20 x 19mm
AG761836	C1/C2	3pcs	40 x 19mm
AG761838	C3/C4	3pcs	20 x 19mm
AG761839	C3/C4	3pcs	40 x 19mm
AG761841	D2/D3	3pcs	20 x 19mm
AG761842	D2/D3	3pcs	40 x 19mm
AG761844	D3/D4	3pcs	20 x 19mm
AG761845	D3/D4	3pcs	40 x 19mm

Supplied with the Amann Girrbach holder.



SHT Zirconia

CERAMILL® ZOLID FX MULTILAYER BLOCKS

Code	Description	Pack	Dimensions
AG761854	O/A1	3pcs	20 x 19mm
AG761855	O/A1	3pcs	40 x 19mm
AG761857	A2/A3	3pcs	20 x 19mm
AG761858	A2/A3	3pcs	40 x 19mm
AG761860	A3.5/A4	3pcs	20 x 19mm
AG761861	A3.5/A4	3pcs	40 x 19mm
AG761863	O/B1	3pcs	20 x 19mm
AG761864	O/B1	3pcs	40 x 19mm
AG761866	B2/B3	3pcs	20 x 19mm
AG761867	B2/B3	3pcs	40 x 19mm
AG761869	B3/B4	3pcs	20 x 19mm
AG761870	B3/B4	3pcs	40 x 19mm
AG761872	C1/C2	3pcs	20 x 19mm
AG761873	C1/C2	3pcs	40 x 19mm
AG761875	C3/C4	3pcs	20 x 19mm
AG761876	C3/C4	3pcs	40 x 19mm
AG761878	D2/D3	3pcs	20 x 19mm
AG761879	D2/D3	3pcs	40 x 19mm
AG761881	D3/D4	3pcs	20 x 19mm
AG761882	D3/D4	3pcs	40 x 19mm



Supplied with the universal holder for use with 3rd party machines.

CERAMILL® ZOLID FX MULTILAYER

Polychromatic super high translucent block with indistinguishable shade graduation. Flexural strength 700 MPa.

Code	Description	Size	Dimensions
AG761733	O/A1	14mm	71mm
AG761734	O/A1	16mm	71mm
AG761735	O/A1	20mm	71mm
AG761737	A2/A3	14mm	71mm
AG761738	A2/A3	16mm	71mm
AG761739	A2/A3	20mm	71mm
AG761741	A3.5/A4	14mm	71mm
AG761742	A3.5/A4	16mm	71mm
AG761743	A3.5/A4	20mm	71mm
AG761745	O/B1	14mm	71mm



SHT Zirconia

CERAMILL® ZOLID FX MULTILAYER

Code	Description	Size	Dimensions
AG761746	O/B1	16mm	71mm
AG761747	O/B1	20mm	71mm
AG761749	B2/B3	14mm	71mm
AG761750	B2/B3	16mm	71mm
AG761751	B2/B3	20mm	71mm
AG761753	B3/B4	14mm	71mm
AG761754	B3/B4	16mm	71mm
AG761755	B3/B4	20mm	71mm
AG761757	C1/C2	14mm	71mm
AG761758	C1/C2	16mm	71mm
AG761759	C1/C2	20mm	71mm
AG761761	C3/C4	14mm	71mm
AG761762	C3/C4	16mm	71mm
AG761763	C3/C4	20mm	71mm
AG761765	D2/D3	14mm	71mm
AG761766	D2/D3	16mm	71mm
AG761767	D2/D3	20mm	71mm
AG761769	D3/D4	14mm	71mm
AG761770	D3/D4	16mm	71mm
AG761771	D3/D4	20mm	71mm
AG761776	O/A1	14mm	98mmø
AG761777	O/A1	16mm	98mmø
AG761778	O/A1	20mm	98mmø
AG761780	A2/A3	14mm	98mmø
AG761781	A2/A3	16mm	98mmø
AG761782	A2/A3	20mm	98mmø
AG761784	A3.5/A4	14mm	98mmø
AG761785	A3.5/A4	16mm	98mmø
AG761786	A3.5/A4	20mm	98mmø
AG761788	O/B1	14mm	98mmø
AG761789	O/B1	16mm	98mmø
AG761790	O/B1	20mm	98mmø
AG761792	B2/B3	14mm	98mmø
AG761793	B2/B3	16mm	98mmø
AG761794	B2/B3	20mm	98mmø
AG761796	B3/B4	14mm	98mmø
AG761797	B3/B4	16mm	98mmø
AG761798	B3/B4	20mm	98mmø



SHT Zirconia

CERAMILL® ZOLID FX MULTILAYER

Code	Description	Size	Dimensions
AG761800	C1/C2	14mm	98mmø
AG761801	C1/C2	16mm	98mmø
AG761802	C1/C2	20mm	98mmø
AG761804	C3/C4	14mm	98mmø
AG761805	C3/C4	16mm	98mmø
AG761806	C3/C4	20mm	98mmø
AG761808	D2/D3	14mm	98mmø
AG761809	D2/D3	16mm	98mmø
AG761810	D2/D3	20mm	98mmø
AG761812	D3/D4	14mm	98mmø
AG761813	D3/D4	16mm	98mmø
AG761814	D3/D4	20mm	98mmø



CERAMILL® ZOLID FX WHITE

Super high translucent white zirconia shade graduation.

Code	Size	Dimensions
AG760122	12mm	71mm
AG760123	14mm	71mm
AG760124	16mm	71mm
AG760125	18mm	71mm
AG760126	20mm	71mm
AG760127	25mm	71mm
AG760130	12mm	98mmø
AG760131	14mm	98mmø
AG760132	16mm	98mmø
AG760133	18mm	98mmø
AG760134	20mm	98mmø



Hpclub

no limits

