



# EQUIPMENT

The absolute A-Z of anything you would ever need. Our equipment range represents the finest quality and the best value for money available.

## IN THIS SECTION:

Air Compressors	162	Microtorch	203
Analogue Milling Machines	166	Model Saw	203
Analogue Milling Machine Accessories	167	Model Trimmers	204
Benching	170	Model Trimmer Wheels	205
Bench Peg	172	Plaster Trap	206
Blow Off Nozzles	172	Plating Machine	206
Boiling Out	173	Pin Machines	207
Bunsen Burners	174	Pneumatic Chisels	208
Bunsen Burner Refillable Devices	175	Polishing Lathe	208
Bunsen Burner Accessories	176	Polishing Unit	209
Burnout Furnaces	177	Porcelain Furnaces	209
Casting Machines	178	Precision Doser	210
Casting Machine Crucibles	179	Pressure Polymerisers	211
Chairs	180	Pressure Pots	212
Compressors	182	Routers	213
Curing Unit	183	Sandblasters	214
Cleaning Machine	184	Scales	215
Dipping Pots	185	Shade Taking	216
Dry Heat Processor	185	Silicone Dispenser	216
Duplicating Machine	186	Sintering Furnaces	217
Dust Extraction	186	Spot Welding	219
Electrolytic Polishing	190	Steam Cleaners	219
Fume Extraction	191	Descaling Liquid	220
Grinding Boxes	192	Storage	220
High Speed Grinder	192	Surveyors	221
Hydraulic Press	193	Suspension Motors	221
Induction Heater	193	Ultrasonic Baths	222
Laser Melting	194	Vacuum Mixers	222
Laser Welder	195	Vacuum/Pressure Forming Units	225
Light Curing Units	195	Vibrators	227
Lighting	197	Wax Bath	228
Micromotors	199	Wax Knives	229
Microscope	202		

## Air Compressors

### BAMBI PT15

The PT15 oil free compressor has been designed with quality at the forefront – the elegant motor cover is more than just aesthetically pleasing – it provides user protection from the hotter parts of the compressor while ensuring perfect air circulation for optimum performance.

L/Min	110
Litres	15
Bar	8
dBA	54

Code	Size	Dimensions
89BHT15	23kg	370 x 370 x 530mm



### DURR DUO TANDEM

This innovative control technology has features that make the regulation and monitoring of a compressor even easier and safer. In addition to electronically tuning and adjusting the pressure range to meet the exact need, it also offers a digital display of the air quality and operating pressure of the compressor. Due to a master/slave control, Tandem compressors can operate side-by-side i.e. parallel on one single compressed air net.

L/Min	130 @ 5 bar
Litres	50
Bar	6 - 7.8
dBA	69 - 74

Code	Size	Dimensions
93D4252-01	64kg	520 x 790 x 760mm



### DURR TRIO COMPRESSOR

Cost effective high performance air compressor with 50 litre tank.

L/Min	160 @ 5 bar
Litres	50
Bar	6 - 7.8
dBA	69

Code	Size	Dimensions
93D5352-01	70kg	520 x 740 x 760mm



## Air Compressors

### EKOM

One of the global leaders in air compressor technology, Ekom offers a huge variety of oil free compressors. Each compressor comes with a **2 year warranty** and a range of service and maintenance programs upon request. Providing clean, bacteria free, dry air, the compressors can be supplied in cabinets and/or driers to cater for every requirement. As standard the machines operate at 6 - 8 bar but they can be supplied as an updated version of 8 - 10 bar.

### EKOM DK50 2V

#### EKV2

L/Min	135 @ 6 bar
Litres	25
dBA	71
Size	52kg

Code	Description	Dimensions
EK2V	Compressor only	460 x 460 x 690mm



#### EK2VD

L/Min	105 @ 6 bar
Litres	25
dBA	71
Size	57kg

Code	Description	Dimensions
EK2VD	Compressor and dryer	665 x 560 x 860mm



#### EK2VCD

L/Min	105 @ 6 bar
Litres	25
dBA	53
Size	104kg

Code	Description	Dimensions
EK2VCD	Compressor, cabinet and dryer	665 x 560 x 860mm



# Air Compressors

## EKOM DK50 2V/50

### EK2V/50

L/Min	135 @ 6 bar
Litres	50
dBA	71
Size	56kg

Code	Description	Dimensions
EK2V/50	Compressor only	475 x 595 x 770mm



### EK2V/50D

L/Min	105 @ 6 bar
Litres	50
dBA	71
Size	61kg

Code	Description	Dimensions
EK2V/50D	Compressor and dryer	665 x 560 x 860mm



### EK2V/50CD

L/Min	105 @ 6 bar
Litres	50
dBA	56
Size	114kg

Code	Description	Dimensions
EK2V/50CD	Compressor, cabinet and dryer	715 x 750 x 1015mm



# Air Compressors

## EKOM DK50 2X2V/110

### EK2X2V/110

L/Min	260 @ 6 bar
Litres	110
dBA	73
Size	98kg

Code	Description	Dimensions
EK2X2V/110	Compressor only	425 x 1090 x 815mm



### EK2X2V/110D

L/Min	200 @ 6 bar
Litres	110
dBA	73
Size	119kg

Code	Description	Dimensions
EK2X2V/110D	Compressor and dryer	605 x 1090 x 815mm



### EK2X2V/110CD

L/Min	200 @ 6 bar
Litres	110
dBA	53
Size	181kg

Code	Description	Dimensions
EK2X2V/110CD	Compressor, cabinet and dryer	720 x 1200 x 990mm



## Analogue Milling Machines

### AMANN GIRRBACH AF350

Analogue milling unit, supplied with W&H motor spindle, vertical lift, twin LED lights, model table and cover.

Code	Size	Dimensions
AG177605	15kg	340 x 250 x 450mm



### SCHICK S1 BASIC

The Schick S1 Basic unit for milling, surveying, transferring or blocking out has a new and improved heightened base and lengthened grip of the milling spindle, for even more working convenience. It is now possible to connect a foot switch to the control unit for even greater ease of use.

- ▶ (1,000 - 40,000 rpm/torque: 6.7 Ncm)
- ▶ Model table
- ▶ Q Basic control unit
- ▶ S1 Basic milling spindle

Code	Size	Dimensions
ggSCH2800	7.2kg	270 x 220 x 400mm



### SCHICK S2 PROFI

The S2 Profi from Schick is a winning combination of high quality and practical parts with a compact and state-of-the-art design. The extremely solid construction of the milling arm and column prevents any vibrations and thus enables best milling results. For more work comfort, the model table can be fixed on the milling table by the push of a button.

- ▶ (1,000 - 40,000 rpm/torque: 7 Ncm)
- ▶ Powerful milling spindle with the highest level of stability
- ▶ LED light head for optimal illumination
- ▶ Magnetic fixation for model table
- ▶ Extremely stable design for vibration free milling
- ▶ Ceramic milling set for wet turbine grinding optionally available

Code	Size	Dimensions
ggSCH2950	13kg	345 x 240 x 507mm



## Analogue Milling Machines

### SCHICK S3 MASTER

Schick's S3 master is the premium milling machine for consistent and repeatable precision drilling.

- ▶ (1,000 - 50,000 rpm/torque: 7.8 Ncm)
- ▶ Maximum precision and mobility due to ball bearing controlled platform
- ▶ Height-adjustable milling table
- ▶ Foot switch controlled magnetic table coupling
- ▶ Foot switch controlled micromotor
- ▶ 3D milling cutter that remembers previous positions
- ▶ 25mm drilling stroke
- ▶ Satellite control screen

Code	Size	Dimensions
ggSCH2500/5	23kg	420 x 300 x 500mm



## Analogue Milling Machine Accessories

### SCHICK S1 BASIC CERAMIC MILLING KIT

Add on set with turbine and separator that cleanly removes the water ready for extraction. The kit includes:

- ▶ suction tub
- ▶ separator
- ▶ turbine T100 (300,000 rpm)
- ▶ model table (stainless steel)
- ▶ light head for turbine
- ▶ control for light head
- ▶ cable for light head
- ▶ diamond tool set for turbine 1.6mm (8pcs)
- ▶ polishing set 2.35mm $\phi$  (3pcs)

Code: ggSCH2650/15



## Analogue Milling Machine Accessories

### SCHICK S2/S3 CERAMIC MILLING KIT

Add on set with turbine and separator that cleanly removes the water ready for extraction. The kit includes:

- ▶ suction tub
- ▶ separator
- ▶ turbine T100 (300.000 rpm)
- ▶ model table (stainless steel)
- ▶ light head for turbine
- ▶ diamond tool set for turbine 1.6mm (8pcs)
- ▶ polishing set 2.35mmØ (3pcs)



Code: 99SCH2650/05



### MEASURING SPINDLE

Measuring spindle – to be used for tracing, surveying and fixation of ready-made attachments. Adjustable from 0.5 - 3mm with a diameter of 22mm.

Code: 99SCH2052/1



### MEASURING SET (NEY)

Measuring set (2.35mmØ) for the exact measurement of the undercut depth. The set contains 1x sensor, 1x undercut gauge 0.25mm, 1x undercut gauge 0.5mm and 1x undercut gauge 0.75mm.

Code: 99SCH10450



### MODEL TABLE

Standard model table for use in all Schick milling machines. Magnetic steel base.

Code: 99SCH2407



### ADJUSTABLE ANGLE

Adjustable angle for the model table or milling tray. Great help on implants or bar type attachments. Can be fixed by the magnetic table function.

Code: 99SCH2506

## Analogue Milling Machine Accessories

### LEAD HOLDER

Lead holder for measuring and marking. Fits all milling machines.



Code	Size
99SCH2268	2.35mmØ
99SCH2268/1	3mmØ

### HOLDING TRAY AND MILLING TRAY

For the production of stable milling models. The receiving tray can be locked magnetically on the milling unit. Milling tray made of aluminium. If the S1 Junior or S1 Basic milling machine is used, the holding tray is not necessary.



Code	Size
99SCH2507/1	Milling Tray
99SCH2509	Holding Tray

### MILLING SET

The compact but clever combination consists of the most precise hard metal milling cutters with matching shaft length. For the production of individual milling or RSS feeds, longitudinally toothed milling cutters in 0° and 2° for telescopic and conical crowns, as well as suitable wax cutters.



Code
99SCH2530/1

### TRANSFER UNIT

For the production of milling models in connection with the measuring spindle as well as the milling and holding tray.



Code	Size
99SCH2795	2.35mmØ
99SCH2795/1	3mmØ

## Benching

### S\_LAB WORKSTATION BY SARATOGA

The modular S\_Lab workstation system by Saratoga represents a new level in both contemporary aesthetics and functionality.

The system has been designed from the ground up and has not been developed for previous incarnations.

Designed by technicians for technicians.



## Benching

### FEATURES AND INNOVATIONS

- ▶ Innovative arm rest system
- ▶ Soft closed drawers with 'push pull' system - push/pull ?
- ▶ Modular drawer unit on wheels for added flexibility
- ▶ Unique fast track electrical power system
- ▶ Dimmable full bar LED system
- ▶ Optional retractable monitor with remote control
- ▶ Hidden management control panel
- ▶ Hidden air line
- ▶ Works in conjunction with Renfert extraction
- ▶ Hidden computer placement
- ▶ Unlimited and unique colour combinations
- ▶ Incredible build quality
- ▶ The latest in durable and contemporary materials
- ▶ Easy to build
- ▶ Design service if required

### MODULAR SYSTEM

- ▶ Single bench
- ▶ Single bench with extra drawers
- ▶ Right angle two bench system
- ▶ Three bench rotary system
- ▶ Four bench island
- ▶ Six bench island
- ▶ Eight bench island

The bespoke islands can be made either light of shelf kist and with centralised or individual extraction.

**For a world of possibilities, please call us for more information.**



## Bench Peg

### CATTANI ESAM BENCH PEG



Code: CT050120

### CATTANI ESAM BENCH PEG ARM REST



Code: CT050193

## Blow Off Nozzles

### AIR BLOW GUN

Max supply pressure 10 bar/140 ibf/in<sup>2</sup> -  
Connection Rp 1/4 female air flow 9  
cfm/L/min.



Code: IN10-010

### SCHICK AIR PUFFER

Instant air controlled by a foot pedal, the Air Puffer can be mounted anywhere and is the perfect partner for your micromotor. Complete with connection block with articulated hose, foot switch and two connecting cables. Input pressure 3-6 bar.



Code: 99SCH4400

## Boiling Out

### WHW BOILING OUT & PROCESSING UNITS

For over 35 years, we have been making our own wax boilout and processing units. Constructed throughout in galvanised steel and with a tough plastic coating for ultimate durability. The top, tank and baskets are all made from heavy duty stainless steel. Up to **16** half flasks can be boiled out efficiently in a matter of minutes. Flasks are boiled out when water is sprayed over them by a rotating spinner, which is operated by the force of the water.

A manually operated hand spray is fitted as standard to both models.

A maximum of **24** flasks can be placed in the unit for processing; polymerisation is effected by the flasks being placed on a shelf above the water line. Processing occurs when water is sprayed on them, combined with the ambient temperature within the closed tank. The efficient water filtration system means the water that is being sprayed is free from contaminants and is always clean. The insulated tank reduces temperature loss and because the water is recycled, the machine is very economical to run.

### INTER 5000

The Inter 5000 is programmable with a choice of 6 programs, giving the technician flexibility with both the temperature and processing time.



Code	Size	Dimensions
01BPDU	80kg	750 x 500 x 1000mm

### INTER 2000

The Inter 2000 has a pre-set temperature and manually operated timer.



Code	Size	Dimensions
01BUO	80kg	750 x 500 x 1000mm

### BOILING OUT UNIT CONSUMABLES

Code	Description	Pack
01BP	Replacement filters	10pcs
07WAM70	Schütz Wam 70 wax solvent	5ltr

## Boiling Out

### DREVE LABORMAT SD

Large boiling out unit with high grade steel housing for up to **12** flasks. Also suitable for polymerisation of resins. The machine has a 24hr timer, spray gun with timer and adjustable temperature control of between 0-95°C.

Code	Size	Dimensions
D3601	75kg	660 x 635 x 940mm



### DREVE LABORMAT TH

Large boiling out unit with high grade steel housing for up to **6** flasks. Also suitable for polymerisation of resins. The machine has a 24hr timer, spray gun with timer and adjustable temperature control of between 0-95°C.

Code	Size	Dimensions
D3603N	38kg	400 x 570 x 500mm



## Bunsen Burners

### WITH PILOT LIGHT



Code	Description
07RBPB	Bottle gas
07RBPB	Natural gas

### WITHOUT PILOT LIGHT



Code	Description
04LBBB	Bottle gas
04LBBN	Natural gas

## Bunsen Burners

### RENFERT BIJOU

Famous angled Bunsen burner with two riser tubes to adjust the flame intensity.



Code	Description
87R9600000	Bottle gas
87R9610000	Natural gas

### RENFERT SAFETY BURNER ECO

Single tube safety burner with automatic gas shut off if flame is extinguished unintentionally.



Code	Description
87R9340100	Bottle gas
87R9350100	Natural gas

## Bunsen Burner Refillable Devices

### STRAIGHT HEADED BUNSEN BURNER



Code: 01LBS

### TILT HEADED BUNSEN BURNER



Code: 01LBT

### GENUINE REKROW MICROTORCH



Code: 05PMT

### GENUINE REKROW HOT AIR TORCH



Code: 01TCSHG



## Bunsen Burner Accessories

### GAS TAPS

Suitable for use with bottle and natural gas, supplied with fittings for natural gas.

For bottle gas users please purchase Ref: 01BGF38 as well.



Code	Description
01CGTD38	Double Gas Tap 3/8"
01CGTS38	Single Gas Tap 3/8"

### GAS TAP FITTING

Converts the gas tap so that it can be used with bottle gas.



Code: 01BGF38

### GAS TAP HOSE CLIP



Code: 01GTHC

### BUNSEN BURNER HOSE

Flexible rubber hose - supplied per 305mm.



Code: 01BBH

### GAS TAP HOSE

Reinforced hose - supplied per 1,000mm.



Code: 01GTH

### BUTANE REFILL BOTTLE

For use with all refillable heating devices.



Code: 01UBR

Size: 300ml

## Burnout Furnaces

### RENFERT MAGMA

Renfert's large capacity (9 x 3X, 4 x 6X, 3 x 9X) fully programmable burnout furnace has a one-piece chamber to ensure there is no local heat loss. The displayed temperature is taken directly from the furnace chamber to ensure accuracy.

- Ensured long life thanks to the PtRh-Pt thermocouple
- Four sided heating ensures uniform heating in the entire furnace chamber
- Quick heat rate: to 900°C (1654°F) in only 60 min
- 99 program storage spaces + 1 program for speed investments
- Large muffle size 180 x 160 x 120mm

Code	Size	Dimensions
87R23000000	30kg	440 x 430 x 500mm



### SIMED SF170/P

Reliable and representing excellent value for money, this programmable burnout furnace has a capacity of 6 x 3X casting rings.

- Final temperature of 1100°C
- Customise the cooling phase
- Store up to 10 programs
- Weekly timer for deferred start

Code	Size	Dimensions
05UTX25	18,5kg	385 x 300 x 440mm



## Casting Machine

### MEGAPULS COMPACT

Exceptionally compact, high frequency induction casting machine. **3 year warranty.**

- ▶ Very short melting cycle
- ▶ Capable of 25 castings in succession
- ▶ HF coil is lowered automatically

Code	Size	Dimensions
38090-620-00	55kg	580 x 560 x 400mm



### MEGAPULS TABLE WITH WATER TANK

Casting machine furniture with circulating cool water tank and built-in pump.

Code	Size	Dimensions
38090-606-00	41.5kg	600 x 680 x 650mm



## Casting Machine Crucibles



**DUCATRON JUNIOR**

Code: 05DMC



**DUCATRON SERIES 3**

Code: 05DMCN



**FORNAX®**

Code: 05FTC



**NESOR E4 DEEP**

Code: 05NCD



**NESOR E4 SHALLOW**

Code: 05NCS



**NESOR TYPE A**

Code: 05NCL



**DEGUSSA UNIVERSAL**

Code: 05DCU



**FUSUS LONG LIFE TYPE 72**

Code: 05F72CL



**MANFREDI LONG LIFE**

Code: 05MFC



**MEGAPULS CRUCIBLE**

Long life crucible suitable for CoCr, NiCr and Pd alloys.

Code: 38090-611-00



**MEGAPULS CRUCIBLE GRAPHITE INSERT**

Graphite insert for use with precious metals.

Code: 38090-615-00

## Chairs

All of our chairs are built to order, so choose your chair, pick your colour and spoil yourself with our options list.

### TECHSIT LAB CHAIR

Vinyl, low backed exceptional task chair available with a huge variety of options.

**5 year guarantee.**



### COLOURS



Code: TS8320

### OPTIONS



OPTION 1  
SEAT TILT

Code: TSIT



OPTION 2  
SYNCHRO

Code: TSSM



OPTION 3  
SEAT SLIDE

Code: TSSS



OPTION 4  
ADJUSTABLE  
ARMS

Code: TSAA



OPTION 5  
FIXED ARMS

Code: TSFA



OPTION 6  
HIGH BACK

Code: TSHB

## Chairs

### WERKSITZ KLIMASTAR

Manufactured to the highest possible standards by Werksitz, the Klimastar chair offers the highest ergonomic properties and a **5 year guarantee**. Made from a PUR foam, the chair is incredibly comfortable but also highly practical as the foam panels are removable for cleaning.



For a full specification, options list and colour range please contact us.

## Compressors

### WHW COMPRESSOR

Incredibly heavy duty, bronze, phosphorus compressor range with a unique plate system that spreads the load evenly. The requirement to buy additional plates is greatly reduced and the frame comes with a **lifetime guarantee**.

Code	Description	Size	Dimensions
01FC2F	Two Flask	2.7kg	90 x 125 x 230mm
01FC3F	Three Flask	3.1kg	90 x 125 x 310mm



### WHW COMPRESSOR PARTS



DISC SPRING

Code: 01FCSP1



SPRING HOLDER PLATFORM

Code: 01FCSP2



TOMMY BAR AND SCREW

Code: 01FCSP3



RECTANGULAR PLATE

28 x 83 x 7mm

Code: 01FCSP4



COMPLETE PRESSURE PLATE

Code: 01FCSP5



COMPRESSOR FRAME BENCH HOLDER

80 x 138 x 25mm

Code	Size
23CFH	660g

## Compressors

### ALL STEEL PRESS

Suitable for three flasks.

Code	Size	Dimensions
23ASP	12.5kg	150 x 200 x 350mm



## Curing Unit

### INTERCURE PROCESS UNIT

The Intercure processing unit is made from plastic coated galvanised steel with a 200W heater and fully insulated tank. The insulated tank will keep the water at a much higher ambient temperature, saving time and money as the machine reaches the processing parameters quicker. With a capacity of 6 x 3 flask compressors, the machine is capable of single or two stage processing. The digital display shows the relevant temperature feedback.

Code	Size	Dimensions
01IPU	18kgs	565 x 370 x 610mm



## Cleaning Machine

### ACTIVEBLUE®

For the removal of plaque and other stains from acrylic prostheses. Use with the relevant cleaning solution for either orthodontic or prosthetic appliances. The unit is supplied with:

- ▶ Orthodontic cleaning activefluid® 400ml
- ▶ Cleaning cup
- ▶ activeblue® cleaning pins 75g
- ▶ Tweezers
- ▶ Holding magnet



Code	Size	Dimensions
38098-000-00	3kg	280 x 150 x 240mm

### ACTIVEBLUE® PINS

Jar of activeblue® pins, suitable for use with all machines of this type.



75g

Code
38098-001-00

### ACTIVEFLUID®

Mild cleaning fluid for use with orthodontic appliances.



1ltr

Code
38150-020-00

### RENFERT SYMPRO UNIVERSAL

Standard cleaning fluid for the removal of plaque, calculus, denture fixatives and discolouration.



2 x 2ltr

Code
87R65000600

### RENFERT SYMPRO NICOCLEAN

Heavy duty fluid for the removal of nicotine stains from prosthetic appliances. can be used without the device as a follow up treatment.



2 x 2ltr

Code
87R65000610

## Dipping Pots

### RENFERT HOTTY LED

Wax dipping pot for producing wax copings with a uniform thickness in only a few seconds. The Hotty LED has the benefit of a temperature display that allows the temperature to be set accurately to within a degree.



Code	Size	Dimensions
87R14610000	400g	98 x 90 x 65mm

### RENFERT HOTTY

Wax dipping pot for producing wax copings with a uniform thickness in only a few seconds.



Code	Size	Dimensions
87R1460000003	360g	98 x 90 x 65mm

### RENFERT VARIO E

Three pot wax heater with independent temperature control for each chamber. The digital display shows the temperature for each pot with a range of 45 - 110°C.

Code	Size	Dimensions
87R14520000	660g	120 x 178 x 54mm



## Dry Heat Processor

### DITTON

Fully automatic dry heat processor that can cure any thickness of acrylic without causing porosity, strain or distortion. The unit does not produce steam or excessive condensation, this prevents flasks and clamps from corroding. Slow temperature ramping helps create a long polymer chain that gives strength to the acrylic and reduces excess monomer. The control unit can be programmed to cure up to 12 flasks.

Code	Size	Dimensions
30DDHP	9.4kg	380 x 380 x 320mm



## Duplicating Machine

### SIMED DUBLIMAT PRO GEL UNIT

The Dublimat Pro has a 6kg capacity and is constructed from non-oxidisable steel. The digital interface allows the user to control a weekly program and also delay starts. If the gel becomes solid, the motor will stop itself to aid longevity, while the temperature control of the tank ensures a consistent temperature through all of the material.

Code	Size	Dimensions
05DPG	21kg	350 x 370 x 430mm



## Dust Extraction

### DUST EXTRACTION DRAWER

Proudly made by WHW for over 30 years, the efficient dust drawer can be installed in most benches within a matter of minutes. A high powered 310 cfm, centrifugal fan with high and low speed settings will ensure that the laboratory is kept clean, whilst optimising the space available. The filtration system offers longevity and cost efficiency and we even produce a precious metal recovery filter. Where aesthetics are important, the drawer front can be replaced so that it integrates seamlessly into the laboratory.



Code	Size	Dimensions
01DEDA	11kg	490 x 445 x 90mm

### DUST DRAWER HIGH EFFICIENCY BAG & PAD

Includes three filter bags and three filter pads.

Code	Pack
01HEF	6pcs

### DUST DRAWER PRECIOUS METAL FILTER

Code	Pack
01DEDGF	1pc

## Dust Extraction

### RENFERT SILENT V4

Powerful, bag-free, four bench extraction unit with four independently controlled suction ports, pneumatic fine filter cleaning and long-lasting EC motor technology.

- ▶ Commutatorless EC motor with a guaranteed 5,000 hours of operation
- ▶ Central connection of users and systems
- ▶ Separate pinch valves allow for 4 user independent use
- ▶ Very low operating noise of 62.5 dB(A)
- ▶ Tuneable auto extraction

Code	Size	Dimensions
87R2933000003	45kg	590 x 350 x 750mm



### RENFERT SILENT EC2

Bag-less, high performance automatic extraction unit for two benches.

- ▶ Low maintenance brushless motor with a guaranteed 5,000 hours of operation
- ▶ Consistently high suction thanks to the intelligent power control
- ▶ Automatic filter cleaning
- ▶ Very low operating noise of 54.3 dB(A)
- ▶ Tuneable auto extraction

Code	Size	Dimensions
87R2937000003	18.5kg	540 x 285 x 535mm



### RENFERT SILENT POWERCAM EC

Bag-less, high performance extraction unit for CAM systems.

**Requires interface cable.**

- ▶ Low maintenance brushless motor with a guaranteed 5,000 hours of operation
- ▶ Suitable for CAD/CAM systems requiring high suction performance due to a powerful motor with a maximum flow rate of 4000L/min
- ▶ Sophisticated bidirectional communication with the CAM system via PLC control
- ▶ Automatic filter cleaning
- ▶ Very low operating noise of 54.3 dB(A)

Code	Size	Dimensions
87R2939000003	18kg	540 x 270 x 535mm



## Dust Extraction

### RENFERT SILENT TS2

Powerful suction unit with two separately controlled suction ports, durable collector motor and double filter system.

- ▶ Consistent suction power thanks to automatic compensation
- ▶ Guaranteed 1,000 hours of operation
- ▶ Very low operating noise of 56.9 dB(A)

Code	Size	Dimensions
87R29300050	27kg	584 x 224 x 591mm



### RENFERT SILENT TS2 DUST BAGS

Code	Pack
87R29210002	5pcs



### RENFERT SILENT COMPACT

Compact extraction for either one appliance or a single workplace.

- ▶ Low maintenance brushless motor with a guaranteed 1,000 hours of operation
- ▶ Tuneable auto extraction
- ▶ No dust bags to change due to bag-free fine filter technology, including mechanical filter cleaning
- ▶ Simple to use and with two suction levels

Code	Size	Dimensions
87R293400003	13.2kg	500 x 245 x 440mm



### RENFERT SILENT COMPACTCAM

Efficient compact extraction unit for CAM systems. **Requires interface cable.**

- ▶ Low maintenance brushless motor with a guaranteed 1,000 hours of operation
- ▶ Sophisticated bidirectional communication with the CAM system via SPS interface
- ▶ Especially developed for the CAM market
- ▶ No dust bags to change due to bag-free fine filter technology, including mechanical filter cleaning

Code	Size	Dimensions
87R293420003	13.2kg	500 x 245 x 440mm



## Dust Extraction

### RENFERT CAM INTERFACE CABLES

Code	Description	Size
87R29340005	For VHF	5m
87R29340006	For Roland DG	5m
87R29340008	For Imes-Icore	5m
87R29340009	For Amann Gurrbach	5m
87R29340010	For Yenadent	5m
87R29340011	For Zirkonzhan	5m
87R29340012	For Zirkonzhan C14	5m

### RENFERT VORTEX COMPACT

Wet and dry extraction with high suction power and durable collector motor for devices with high dust generation. 30 litre capacity.

Code	Size	Dimensions
87R29245000	10kg	480 x 385 x 600mm



### RENFERT VORTEX COMPACT DUST BAGS

Code	Pack
87R29245003	5pcs



### RENFERT EXTRACTOR CLAMP

Moveable extractor clamp that can be fitted to any extraction system and benches of 20 - 40mm thickness. Glass shield sold separately.

**Code:** 87R29250000



### GLASS SHIELD

For use with the Renfert Extractor Clamp.

**Code:** 87R29251000

## Dust Extraction

### DUST BUSTER

Heavy duty extraction with variable speed control, a powerful 1000W motor and a three stage filtration system.

Code	Size	Dimensions
21DBUV	12.5kg	450 x 450 x 550mm

### DUST BUSTER MICROFIBRE BAG

Code	Pack
21DBFB	5pcs



## Electrolytic Polishing

### SIMED MINILUX ELECTRO UNIT

Electrolytic CoCr polishing unit with a 2.5 litre tank, used in conjunction with an electrolytic polishing solution..

Code	Size	Dimensions
05SMU	6kg	220 x 210 x 200mm



### S-U UNOPOL

Schuler's incredibly efficient electrolytic polishing unit, with a six step current control for optimised use.

Code	Size	Dimensions
SC15210	4kg	210 x 170 x 330mm

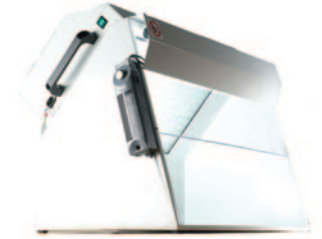


## Fume Extraction

### FUME CABINET BV660H-C

Fan/filter casing made of a steel construction finished in dove grey that is mounted onto the hood enclosure. The unit comes complete with a clear polycarbonate panel and lighting, particulate (intake) filter with bonded carbon filter, centrifugal fan and brushless motor. UL, VDE and CSA approved.

Code	Size	Dimensions
01WSFC	38kg	450 x 670 x 525mm



### FUME CABINET BV500S-C

Fan/filter casing made of a steel construction finished in dove grey. The unit is complete with a clear PETG folding plastic fume shield, particulate (intake) filter with bonded carbon filter, centrifugal fan, and brushless motor. UL, VDE and CSA approved.

Code	Size	Dimensions
01BV500SC	18kg	385 x 500 x 530mm



### CARBON FILTER

Universal carbon filter for BV660H-C and BV500S-C.

Code	Pack
01WSCF	1pc

### PARTICULATE FILTER

Universal particulate filter for BV660H-C and BV500S-C..

Code	Pack
01WSPF	6pcs

### CHARCOAL SUCTION UNIT

This compact monomer filtration and extraction unit is controlled by a photoelectric sensor (automatic switch on/off) and includes a usage counter.

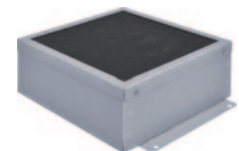
Code	Size	Dimensions
38072-001-00	6kg	260 x 220 x 260mm



### CHARCOAL SUCTION UNIT FILTER

Each filter will provide 50 hours of safe extraction.

Code	Pack
38072-001-30	1pc





## Grinding Boxes

### RENFERT GRINDING BOX

Acrylic grinding box with integrated 2x magnifying glass.

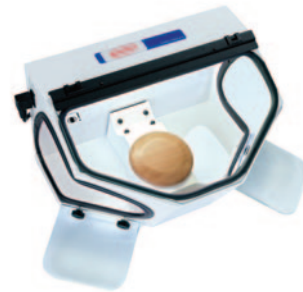
Code	Size	Dimensions
87R26250000	400g	150 x 250 x 150mm



### RENFERT DUSTEX MASTER PLUS

Renfert's Dustex ensures a safe, clean working environment and most importantly a clear view of the appliance. Fitted with an LED lamp for the highest quality detail recognition, extraction port, silicone coated screen, powder coated housing and 17 litre capacity.

Code	Size	Dimensions
87R26260105	5kg	400 x 380 x 285mm



## High Speed Grinder

### DEMCO HIGH SPEED GRINDER

Heavy Duty two speed grinder with automatic spindle. Fitted with two lights, safety glass shield, large working area and extraction port.

Code	Size	Dimensions
05DE96	17kg	323 x 260 x 279mm



### AUTO SPINDLE

Replacement spindle that can be used with the Demco high speed grinder.

Code: 05SP2

## Hydraulic Press

### OMEC HYDRAULIC PRESS

The Omec three flask manual hydraulic press is watertight and needs very little maintenance. The press can develop a thrust of nearly 150,000N on the muffles @ 400 bar.

Code	Size	Dimensions
60OMHP	21kg	190 x 200 x 500mm



## Induction Heater

### AMANN GIRRBACH NOFLAME® PLUS

The original electric Bunsen is still the benchmark when it comes to quality and longevity. The unit is completely safe as no naked flames are produced, easy to use and can save up to 75% on comparable energy expenses.

Code	Size	Dimensions
AG116250	600g	195 x 85 x 83mm



### AMANN GIRRBACH NOFLAME® PLUS CAPS

These silicone caps protect the unit from wax residue or heat damage.

Code	Pack
AG116210	10pcs

## Laser Melting

Lasers are utilised to melt layers of fine metal powder and create complex geometries with incredible precision directly from a CAD file. A wide range of production sizes and innovative features set these machines apart. One such feature — Concept Laser's patented LaserCUSING technology — combines laser and melting to create high precision, mechanically and thermally resilient metallic components layer by layer. With newer materials such as titanium and precious metals being available in powder form, every metal based indication can be laser melted.

### MLAB 100

The Mlab 100 cusing is ideally suited for the production of metal substructures/components and elaborate, detailed indications such as bars and chrome frameworks.

- ▶ Build envelope: 90 x 90 mm<sup>2</sup> (x, y)
- ▶ Layer thickness LaserCUSING® 15 - 50µm
- ▶ Production speed LaserCUSING® 1 - 5 cm<sup>3</sup>/h (depending on material)
- ▶ Requires nitrogen for processing
- ▶ 100W laser power

#### LaserCUSING® materials:

- ▶ Cobalt chrome
- ▶ 18 carat yellow gold
- ▶ 18 carat rose gold
- ▶ 18 carat red gold
- ▶ Platinum
- ▶ Silver



Code	Size	Dimensions
GEMLAB	600kg	930 x 705 x 1848mm

## Laser Welder

### DESKTOP COMPACT LASER WELDER

This extremely compact table top laser welding unit is flexible enough to cover all welding requirements as the dose can be adjusted. From delicate detailed welding to securing joints from fractures and breakages. **Requires argon regulator.**

- ▶ Clear and user-friendly touch screen
- ▶ High output reserve
- ▶ Ergonomically designed – large working chamber
- ▶ High quality microscope with a wide field of vision
- ▶ Large pulse adjustment range – easy operation using joysticks
- ▶ Integrated extraction and cool air nozzle
- ▶ Adjust the power and intensity of the weld
- ▶ Maximum power 50W
- ▶ Peak pulse output 5000W
- ▶ Pulse energy 50J
- ▶ Welding diameter 0.2 - 2mm



Code	Size	Dimensions
38090-578-50	50kg	645 x 510 x 430mm

### ARGON REGULATOR

Interface between the laser welder and the argon gas.

Code
38090-404-00



## Light Curing Units

### DREVE MULTISPOT®

This handy, portable LED curing unit made for dental laboratories has a curing range of 385 - 390 + 465 - 470nm and a rechargeable Lithium-ion battery. Suitable for most composites and light curing resins. Easy and safe to use with an automatic 20 second timer.

Code	Size	Dimensions
D38110	140g	300 x 140mm

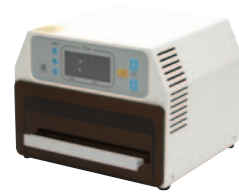


## Light Curing Units

### TRAY-LED LIGHT CURING BOX

Compact (two unit) programmable light curing machine (12 x LEDs @ 380 - 420nm).

Code	Size	Dimensions
52TLED	3.3kg	216 x 200 x 150mm



### EUROLIGHT

Large capacity (four unit) light curing machine (4 x 9W fluorescent bulbs @ 350-400nm).

Code	Size	Dimensions
01ELB	2kg	295 x 215 x 115mm



### DREVE EYEVOLUTION®

The EyeEvolution® light polymerisation unit offers flexible curing from its LED light system with a range of 2 x 385 -390 + 2 x 465 - 470nm. The mirrored rotary table removes shadows and ensures a uniformed cure. Easy to use with a 1, 2, 3, 5 and 10 minute instant timer.

Code	Size	Dimensions
D38100	1.5kg	255 x 205 x 205mm



### DREVE EYEVOLUTION® MAX

The EyeEvolution® Max light polymerisation unit offers flexible curing from its powerful LED light system with a range of 1 x 385 -390 + 6 x 465 - 470nm. This means up to 2mm of certain composite materials can be cured in 3 minutes. The mirrored rotary table removes shadows and ensures a uniformed cure. Easy to use with a 1, 2, 3, 5 and 10 minute instant timer.

Code	Size	Dimensions
D38101	1.8kg	255 x 205 x 205mm



## Light Curing Units

### TRIAD® 2000

The time-tested Triad 2000 curing unit has a generous chamber and special tungsten halogen light. The curing table both rotates and lifts to ensure maximum efficiency when polymerising.

Code	Size	Dimensions
95D7021201	6.3kg	273 x 177 x 307mm



### TRIAD 2000 BULB

Code	Pack
01TSB	1pc

## Lighting

### DIMMABLE LED BENCH LIGHT

Large dimmable task lamp.

- ▶ 84 bright daylight™ LEDs
- ▶ Brightness 3400 Lux
- ▶ Continuous dimming to 10%
- ▶ Multi position head joint to direct light where needed
- ▶ Even spread of light for large area

Code	Size	Dimensions
22LEDL	2.3kg	500 x 580 x 600mm



### LUMINOS LED BENCH LIGHT

Contemporary, powerful and dimmable task lamp.

- ▶ Ideal for large areas
- ▶ Brightness 3800 Lux
- ▶ 3 stage dimming
- ▶ Articulated light mount
- ▶ Even spread of light

Code	Size	Dimensions
22LBL	3.2kg	600 x 650 x 750mm



## Lighting

### MAGNIFLEX LED MAGNIFIER

Flexible magnifying light with large working area.

- ▶ 1.75 x magnification
- ▶ Brightness 1850 Lux

Code	Size	Dimensions
22LEDMF	900g	460 x 195 x 400mm

### ULTRA BRIGHT LED BENCH LIGHT

Contemporary, chrome, ultra slim task light.

- ▶ Long arm reach of 730mm
- ▶ Brightness 2100 Lux
- ▶ Three stage dimming
- ▶ Multi-position head joint to direct light where needed
- ▶ Even spread of light for large area

Code	Size	Dimensions
22UBTL	1kg	650 x 760 x 20mm

### PORTABLE TWIST LAMP

Convenient and portable light with 13W daylight tube.

- ▶ Brightness 1850 Lux

Code	Size	Dimensions
22TPL	1.3kg	340 x 330 x 120mm

### PORTABLE TWIST LAMP BULB

Code	Pack
22TPLT	1pc

### MAGNIFYING ARM ATTACHMENT

Suitable for use with the Ultra Bright LED Bench Light.

Code: 22MAA



## Micromotors

### SCHICK QUBE II

QUBE II is the ultimate handpiece with an intelligent satellite display system. Designed to the highest possible specification with ultimate controlled power and a new level of aesthetics and functionality.

Due to its world leading performance parameters of up to 60,000 rpm and 9 Ncm torque, QUBE II is second to none.

Thanks to the high rpm in combination with high torque, QUBE II easily handles even the most difficult grinding, cutting and milling works in the laboratory.

The new lightweight and excellently balanced handpiece is ideally adapted to the physiology of the human hand to avoid constant strain. The special weight distribution in the handpiece means that

the user can work without getting tired, thus leading to greater precision and performance capacity.

The completely revised and updated intelligent satellite display is an additional characteristic of the new QUBE II. It is equipped with a large, easily readable, illuminated display so that all the important information is in the user's field of vision.



Code	Description	Size	Dimensions	Pic
99SCH9505	Knee Control	902g	210 x 95 x 203mm	1
99SCH9508	Foot Control	1.8kg	220 x 155 x 75mm	2
99SCH9513	Table Top	555g	155 x 155 x 75mm	3

### SCHICK QUBE II ELECTRIC WAX KNIFE

For ultimate flexibility, add on the optional electric wax knife from Schick. Connect it to the QUBE II control unit and it can be called up and controlled with the system satellite display too.



Code: 99SCH9066

### SCHICK QUBE II DYNAMIC FOOT CONTROL

Touch sensitive foot pedal that gives the user full speed control.



Code: 99SCH9440

## Micromotors

### SCHICK Q PROFI

Suitable for the most difficult grinding, separating and milling operations, the Q Profi manages them all with ease. With an optimisable speed range of between 1,000 – 50,000 rpm and 8 Ncm, the Q Profi represents power, efficiency and style.

The soft grip, precisely balanced handpiece creates the benchmark in comfort and control. The shape of the handpiece and the integrated sealing system provides excellent protection against pollution and premature wear.



Code	Description	Size	Dimensions	Pic
99SCH9340/5	Knee Control	902g	210 x 95 x 203mm	1
99SCH9350/5	Foot Foot Control (up to 40,000 rpm)	1.8kg	220 x 155 x 75mm	2
99SCH9550	Table Top	720g	155 x 155 x 75mm	3

## Micromotors

### SCHICK Q BASIC

The Q Basic micromotor represents exceptional quality but in a simple to use, no frills design. With a speed range from 1,000 – 40,000 rpm and 6.7 Ncm of torque, the Q Basic is ideally suited for all kinds of work in the laboratory. The simple and robust technology of the Q Basic increases its reliability and longevity.



Code	Description	Size	Dimensions	Pic
99SCH9405	Knee Control	1.1kg	210 x 95 x 203mm	1
99SCH9408	Foot Foot	1.9kg	220 x 155 x 75mm	2
99SCH9413	Table Top	670g	155 x 155 x 75mm	3

### TRAUS B110

Universal brushless micromotor with foot, knee and table top control. Featuring cruise control, reverse, digital display and rpm control dial.



Code	Size	Dimensions
TSB110	3kg	235 x 90 x 200mm

### MARATHON ECO 450

Economic foot controlled, brushed micromotor.



Code	Size	Dimensions
63ECO450	2.3kg	185 x 100 x 140mm

## Microscope

### RENFERT EASY VIEW 3D

The EASY view 3D Dental Viewer is an innovative video microscope with a 3D monitor that helps users maintain an ergonomic posture whilst also enabling fast, direct communication between the laboratory and dentist's practice. EASY view 3D is not only ideally suited for viewing objects, for routine processing and quality control but is also equally useful for educational, training and documentation purposes.

- ▶ Precise and reliable: 15x and 20x magnification in 2D or 3D mode
- ▶ High definition (1920 x 1080) image reproduction on a 21.5 inch full HD 3D monitor
- ▶ The passive polarisation glasses enable precise 3D viewing and are well suited for persons wearing glasses
- ▶ Material optimised image reproduction through four different object modes - toggle through the different modes by mouse click
- ▶ Easy to use and intuitive functionality of the EASY view 3D Dental Viewer helps to document work and share information between the laboratory team as well as the dentist's practice
- ▶ Capture the monitor image by footswitch and store the screenshot on the USB stick or send it via LAN connection to a PC
- ▶ Images and video sequences are stored in 2D mode



Code	Size	Dimensions
87R240000500	6.5kg	170 x 511 x 377mm

### HDMI VIDEO RECORDER

Records 2D video (including sound) of current view.



Code
87R24000502

### HDMI SPLITTER

Allows the video signal to be split for another device.



Code
87R24000503

### 3D GOGGLES

Additional pair of 3D glasses.



Code
87R90003780g

## Microtorch

### FORMADENT MICROTORCH KIT

Set includes two oxygen cylinders, regulator and six welding points - **butane sold separately.**



Code
32FMK

### BUTANE CYLINDER



Code	Size
32BC	70ml

### OXYGEN CYLINDER



Code	Size
32OC	100ml

## Model Saw

### SCHICK G2 CONCEPT MODEL SAW

Until now, saw cuts on many models had to be made manually due to the limited space between the preparation boundary or irregularities in the alignment of stumps. In addition to the increased risk of injury, this mode of operation can also increase the risk of damage to the plaster model and is very time consuming. The G2 Concept's power and precision dramatically reduces these issues. Once the model is placed on the saw table and fixed with two hands, the integrated line laser allows precise positioning of the cut. When lowering the saw table, the saw blade plunges into the model from below and sets a clean cut parallel to the pins. The exact depth of cut can now be determined optically by the laser guidance system. The balance of the cut



line is then broken by hand at the intended break point. Since the saw cuts are parallel to each other, all model segments can be easily removed from the model.

Cutting depth maximum	26.5mm
Width of cut	0.3mm
Speed	7,500 rpm

Code	Size	Dimensions
99SCH1500/5	4.5kg	390 x 375 x 160mm

### SCHICK G2 CONCEPT MODEL SAW DISC

Code	Description	Dimensions
99SCH1967/2	Replacement diamond disc	85ø x 20mm

## Model Trimmers

### RENFERT MT PLUS

**Wet** and **dry** trimmer, with huge power (1.74 hp) and torque.  
Size: 13.5kg Dimensions: 410 x 300 x 320mm

Code	Description
87R18036000	With Klettfix disc
87R18036500	With Marathon partial diamond wheel



### RENFERT MT3

Exceptional value **wet** model trimmer offering reliability and ease of use with a 1300W motor.  
Size: 13.2kg Dimensions: 410 x 305 x 330mm

Code	Description
87R18080000	With Klettfix disc
87R1808050003	With Marathon partial diamond wheel



### OMEC DOUBLE MODEL TRIMMER

The Omec orthodontic double model trimmer is incredibly efficient as the power is delivered by ball bearing drive shafts, which reduce wear and heat. The unit has two motors that can work independently or simultaneously. The water solenoid manages the water input and the machine is fitted with a goniometer and model guide for absolute control and accuracy. The machine is supplied as standard with a fine and coarse double sided carborundum wheel or can be upgraded to diamond trimming wheels - please ask for more information.

Code	Size	Dimensions
6oODMT	37kg	420 x 530 x 400mm



## Model Trimmer Wheels

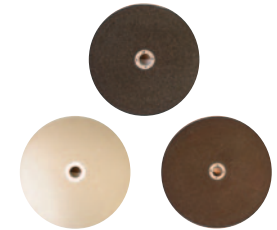
### FARO MODEL TRIMMER WHEELS

Code	Description	Pack	Size
05FSW	Carborundum	1pc	254mmø
04FDW	Diamond	1pc	254mmø



### GAMBERINI MODEL TRIMMER WHEELS

Code	Description	Pack	Size
01GMTW10C	Coarse Carborundum	1pc	254mmø
01GMTW10D	Diamond	1pc	254mmø
01GMTW12	Smooth Carborundum	1pc	305mmø
01GMTW12C	Coarse Carborundum	1pc	305mmø
01GDMTDW	Diamond	1pc	305mmø



### RENFERT INFINITY DIAMOND WHEEL

Fully coated diamond wheel for **wet** trimming.

Code	Description	Pack	Size
87R18033000	For use with the MT Plus	1pc	234mmø
87R18033001	For use with the MT3	1pc	234mmø



### RENFERT MARATHON PARTIAL DIAMOND WHEEL

Partially coated diamond wheel for **wet** and **dry** trimming.

Code	Description	Pack	Size
87R18032000	For use with the MT Plus	1pc	234mmø
87R18032001	For use with the MT3	1pc	234mmø



### RENFERT KLETTFIX WHEELS

Carborundum wheel for **wet** trimming.

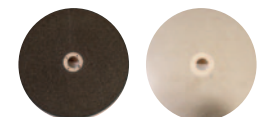
Code	Description	Pack	Size
87R18031100	Coarse 80 grit	5pcs	234mmø
87R18031200	Medium 120 grit	5pcs	234mmø



### UNIVERSAL MODEL TRIMMER WHEELS

Suitable for most model trimmers with a 25mm hole.

Code	Description	Pack	Size
05MSW	Coarse Carborundum	1pc	254mmø
05MSWE	Coarse Carborundum	1pc	305mmø
05MSWD	Diamond	1pc	254mmø



## Plaster Trap

### DISPOSABLE PLASTER TRAP

A reliable, economic and convenient solution for the task that nobody wants to do.

Size: 18.9ltr Dimensions: 300ø x 380mm

Code	Description	Pack
32BPTL	Plaster Trap Starter Kit	1pc
32BPTR	Plaster Trap Refill	1pc
32BPTH	Spare Set of Hoses	1pc



## Plating Machine

### SCHULER S-U QUICK PLATE

All in one unit, that is easy to use and requires no pre-polishing or degreasing. Six step current control makes it suitable for all indications.

Code	Dimensions
SC11770	200 x 170 x 330mm



### SCHULER S-U GILDING LIQUID

Code	Size
SC81420018	1.25ltr

### SCHULER S-U AURO PLATE

Gilding machine that is simple and efficient to use, featuring overload protection and visual and audible alerts.

Code	Dimensions
SC13100	200 x 112 x 65mm



### SCHULER S-U GILDING LIQUID

Code	Size
SC81420019	20ml

## Pin Machines

### AMANN GIRRBACH GIROFORM®

Precise and fast pin drilling machine that produces identical and uniform holes to guarantee pin friction. The plate holder is magnetically secured at the base and a laser guidance system ensures accuracy with the "one button" drill system. The Giroform® is a complete system with many additional components for added functionality.

Code	Size	Dimensions
AG176701	9.6kg	250 x 183 x 370mm



### RENFERT AUTO SPIN

Using the AUTO spin pin drill, precise working models with plastic base plates can be fabricated. The drilling unit is also compatible with other model making systems like Giroform® or Zeiser®. The innovative Renfert Level Controller ensures that the horizontal drilling depths are the same, ensuring that the pin is absolutely vertical.

Code	Size	Dimensions
87R18600000	7.6kg	275 x x 180 x 368mm



### RENFERT TOP SPIN

With a variable drill depth setting of 0-20mm and a drill accuracy of <0.01mm, the Top Spin even features touch sensitive controls and a quick tool changing chuck.

Code	Size	Dimensions
87R18400000	4kg	175 x 153 x 330mm



For the complete range of model management consumables please see from p136.



## Pneumatic Chisels

### RENFERT PILLO

Adjustable, pneumatic plaster chisel with an operating pressure of 4-6 bar.

Code	Size	Dimensions
87R50224000	300g	290 x 157mm

### RENFERT POWER PILLO

With even greater performance, a 28% reduction in hand/arm vibration and maintenance free, the Power Pillo will save you time and money.

Code	Size	Dimensions
87R50225000	398g	290 x 168mm

### PNEUMATIC CHISEL TIPS

Code	Description	Pack	No.
87R50220100	Narrow Flat	1pc	1
87R50220200	Narrow Wide	1pc	2
87R50220300	Hollow Ground	1pc	3
87R50220400	Pointed	1pc	4



## Polishing Lathe

### OMEC POLISHING LATHE

Two speed (1400-2800 rpm), mountable, heavy duty lathe with 350W motor.

Code	Size	Dimensions
60OPL	10kg	210 x 360 x 210mm



## Polishing Unit

### IEU BENCH TOP POLISHING UNIT

Constructed in galvanised steel with a white, tough plastic coating for added durability. The powerful dust extraction system is driven by two centrifugal fans (310 cfm each), which power the troughs independently. These troughs are manufactured in polypropylene and are fitted with a clear adjustable plastic visor.

All particles are extracted through our efficient pre and main filtration system, these are easy and cost effective to replace.

The top of the unit is hinged and offers easy access to the filters and fluorescent lighting system.



Code	Size	Dimensions
01IEU	40kg	600 x 750 x 515mm

### POLISHING UNIT CONSUMABLES

Code	Description	Pack
01IEUFB	Dust Bags	2pcs
01IEUFBE	Exhaust Filters	2pcs
01IEUFP	Filter Pads	2pcs

## Porcelain Furnaces

### VITA V60 I-LINE®

High performance porcelain furnace using only the highest quality materials. Featuring a contemporary easy to use touch screen display with intuitive menu navigation. The furnace is simplicity itself and requires very little setup. The VITA quartz muffle is incredibly long-lasting, meaning there is very little maintenance required.

Code	Size	Dimensions
VDV60I220	18kg	420 x 260 x 570mm



## Porcelain Furnaces

### VITA VACUMAT® 6000 MP & VPAD COMFORT

The 6000 MP pressable furnace provides all the advantages of a modern firing and press furnace in a compact design. The machine will automatically detect the amount of ingots and this prevents pressing errors and potential damage to the muffle. All the firing information is displayed on the 7" LED tablet display (vPad comfort), which offers 500 customisable firing programs, separate user profiles, full furnace control and current status.



Code	Size	Dimensions
VDV6000MP220	20kg	325 x 230 x 630mm

### VITA VACUUM PUMP

Suitable for use with all VITA furnaces. Provides a consistent vacuum and level of compressed air in a soundproof box.

Code: VDVPU220



## Precision Doser

### AMANN GIRRBACH SMARTBOX® X2

With simple one touch programming and accuracy of <1g, the smartbox® X2 will save you time and create a dust free, healthier working environment. The machine will dispense the water and once this is precisely weighed, the correct amount of powder is finely dosed. This creates a more homogeneous mix, guaranteeing the best possible results from your plaster and die stones every time.

Code	Size	Dimensions
AG116170	16.5kg	335 x 240 x 590mm



## Pressure Polymerisers

### DREVE POLYMAX RANGE

Suitable for hot and cold polymerisation.

- ▶ 90 minute timer
- ▶ Adjustable air pressure >5 bar (Polymax 5 >6 bar)
- ▶ Automatic safety sealing system
- ▶ Maintenance free
- ▶ Drainage valve

### DREVE POLYMAX 1 - 95

Maximum Temperature	95°C
Pressure Pot	1600 x 110mm
Capacity	1 x brass flask or approximately 2 x pourable flasks

Code	Description	Size	Dimensions
D3429	Red	10.2kg	315 x 295 x 225mm
D34291	Silver	10.2kg	315 x 295 x 225mm



### DREVE POLYMAX 1 - 120

Maximum Temperature	120°C
Pressure Pot	1600 x 110mm
Capacity	1 x brass flask or approximately 2 x pourable flasks

Code	Description	Size	Dimensions
D3428	Red	10.2kg	315 x 295 x 225mm
D34281	Silver	10.2kg	315 x 295 x 225mm



### DREVE POLYMAX 3

Maximum Temperature	95°C
Pressure Pot	1600 x 300mm
Capacity	3 x brass flasks or approximately 6 x pourable flasks

Code	Description	Size	Dimensions
D3422	Red	15.1kg	315 x 295 x 440mm
D34221	Silver	15.1kg	315 x 295 x 440mm



## Pressure Polymerisers

### DREVE POLYMAX 5

Maximum Temperature	95°C
Pressure Pot	220ø x 174mm
Capacity	1 x large articulator, 3 x brass flasks or approximately 6 x pourable flasks

Code	Description	Size	Dimensions
D3423	Red	16.9kg	385 x 345 x 310mm
D34231	Silver	16.9kg	385 x 345 x 310mm



## Pressure Pots

### BOSWORTH® PRESSURE POT

Hydraulic water press (1 litre capacity) used for creating porosity free relines, repairs, splints or any self-curing acrylic with just 10-15 Psi.

Code	Size	Dimensions
71C092135	2.8kg	127ø x 88mm (bowl)



### POLYCLAV® PRESSURE VESSEL

With a capacity of 4 litres, the easy to use Polyclav® is suitable for the polymerisation of all cold curing devices.

Code	Size	Dimensions
38070-000-00	3.2kg	200ø x 180mm (bowl)



### PRESSURE PAIL

Internal pressure can be generated either hydraulically using water or pneumatically using air from a compressor. The Pressure Pail is large enough to hold a standard reline jig or smaller articulator. The easy crank handle, replaceable O-ring and all-aluminium construction make this pot excellent for curing all types of cold cured acrylics. Great for repairs, relines, splint production, retainers and more. **Airline adaptor sold separately.**

Code	Size	Dimensions
399622760	2.3kg	152ø x 152mm (bowl)



Code	Description	Pack
399622780	Airline adaptor	1pc

## Routers

### RENFERT MILLO

Compact and powerful dental arch trimmer.

Code	Size	Dimensions
87R18040000	5.7kg	252 x 214 x 207mm



### RENFERT MILLO PRO

The Pro version offers a dial that can adjust the height of the cut and an auto extraction enabling direct extraction port.

Code	Size	Dimensions
87R18050000	5.7kg	252 x 214 x 207mm



### ROUTER BURS

Code	Description	Pack
87R18060001	Tapered cross cut	1pc
87R18060002	Tapered coarse cut (included with machine)	1pc
87R18060003	Cylindrical cross cut	1pc



## Sandblasters

### RENFERT BASIC ECO

High precision sandblaster with compact dimensions, a choice of one or two tanks, LED lighting and a large viewing panel.  
Size: >5.5kg Dimensions: 400 x 350 x 275mm

Code	Description
87R2949105003	One chamber (25 - 70µm)
87R2949125003	One chamber (75 - 250µm)
87R2949202503	Two chamber (1 x 25 - 70µm and 75 - 250µm)



### RENFERT BASIC CLASSIC

With a higher bar pressure (8 bar) than the Basic Eco, more powerful lighting and precise blasting (Venturi principle), this one to two chamber sandblaster also has the added benefit of a 14 litre chamber. Size: >6.5kg Dimensions: 415 x 355 x 270mm

Code	Description
87R2947105003	One chamber (25 - 70µm)
87R2947125003	One chamber (75 - 250µm)
87R2947200003	Two chamber (2 x 25 - 70µm)
87R2947225003	Two chamber (2 x 75 - 250µm)
87R2947202503	Two chamber (1 x 25 - 70µm & 1 x 75 - 250µm)



### RENFERT BASIC MASTER

As per the specification of the Basic Classic but with an even larger 20 litre tank. Size: 8.1kg Dimensions: 460 x 395 x 285mm

Code	Description
87R2948200003	Two chamber (2 x 25 - 70µm)
87R2948225003	Two chamber (2 x 75 - 250µm)
87R2948202503	Two chamber (1 x 25 - 70µm & 1 x 75 - 250µm)



### RENFERT BASIC QUATTRO

Premium sandblasting unit supplied with two chambers but has the flexibility of retro fitting up to four.  
Size: 8.9kg Dimensions: >560 x 395 x 285mm

Code	Description
87R2958000003	Two chamber (1 x 25 - 70µm & 1 x 75 - 250µm)
87R29580050	Additional tank 25 - 70µm
87R29580250	Additional tank 75 - 250µm



## Sandblasters

### RENFERT BASIC QUATTRO IS

The ultimate sandblaster, in addition to the Basic Quattro specification, the IS is equipped with Immediate Stop technology. This function, which is controlled by a foot switch, allows the starting or stopping of the blasting instantly. Ideal for precision blasting and also reduces waste of the blasting medium. Size: 11.5kg Dimensions: >610 x 395 x 320mm

Code	Description
87R2959000003	Two chamber (1 x 25-70µm & 1 x 75 - 250µm)
87R29590050	Additional tank 25 - 70µm
87R29590250	Additional tank 75 - 250µm



### RENFERT VARIO JET

Recyclable sandblaster with fixed nozzle (three position adjustment) and rotating basket. creates fully automatic and efficient blasting. The intelligent extraction system will only remove the fine, unusable dust. Up to seven chrome frameworks can be sandblasted in as little as 10 minutes.

Code	Size	Dimensions
87R29610000	26kg	460 x 405 x 650mm

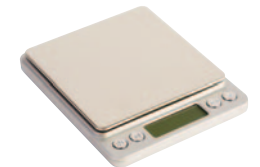


## Scales

### NV-2000

For general use, these scales can weigh up to 2000g with an accuracy of 0.1g. Platform size 100 x 100mm.

Code	Size
39NV20	300g



### NV-500

For precision weighing, these scales can weigh up to 500g with an accuracy of 0.01g. Platform size 100 x 100mm.

Code	Size
39NV50	200g



For the complete range of scales please see from p512.

## Shade Taking

### VITA EASYSHADE® V

The VITA Easyshade® V digital spectrophotometer was developed for precise, fast and reliable shade determination of natural teeth and ceramic restorations.

- ▶ Precise and reproducible tooth shade determination in seconds, thanks to the latest measuring technology
- ▶ Objective and reliable measurements, due to the LED technology that is unaffected by ambient conditions
- ▶ Simple and intuitive, thanks to the easy to use touch screen and software
- ▶ Efficient, digital communication for exchanging information about tooth shade and images between the dental practice and the laboratory



Code: VDEASY5

## Silicone Dispenser

### DREVE DOSPER EVO

Automatic mixing and dispensing unit for addition curing duplicating silicones. Suitable for all silicones with a 1:1 mixing ratio.

Code	Description	Size	Dimensions
D5050	Red	12kg	370 x 225 x 320mm
D50501	Silver	12kg	370 x 225 x 320mm



### DREVE DOSPER EVO TANK

Transparent containers for decanting the silicone.

Code	Description	Pack	Size
D5022	Red	2pcs	1.7ltr



## Sintering Furnaces

### AMANN GIRRBACH CERAMILL® THERM 3

Fully automatic high performance furnace for final sintering of distortion free zirconium oxide frameworks.

- ▶ 250 sintering programs including 3 for Amann Girschbach materials
- ▶ 3 stackable sintering bowls for maximum utilisation of the furnace
- ▶ Sintering at the press of a button – very easy operation with touch screen technology
- ▶ Cost effective and reliable

Code	Size	Dimensions
AG178380	30kg	500 x 461 x 480mm



### SINTERING PEARLS

1mm pearls for sintering Zirconia.

Code	Size
AG178311	200g

### HEATING ELEMENT

It is advisable to change all elements at the same time.

Code	Pack
AG178312	1pc

### STACKABLE SINTERING BOWL

Maximum of three bowls can be used at once.

Code	Pack
AG178382	1pc

### AMANN GIRRBACH CERAMILL® THERM S

The ceramill® therm s has the capability of sintering a single restoration in only **2 hours**. The compact, energy efficient furnace has a range of applications. These would include the capability of sintering up to a six unit restoration, the Autodry® drying function and glaze firing cycles. The 10.4" intuitive touch screen display can be connected to the internet, enabling fast transference of protocols and updates.

Code	Size	Dimensions
AG179390	23kg	383 x 780 x 343mm



## Sintering Furnaces

### AMANN GIRRBACH CERAMILL® ARGOTHERM 2

CoCr sintering furnace for the exclusive use of the revolutionary material ceramill sintron®. The "core" of the system, the ceramill® argovent 2.0, ensures minimal consumption of argon gas and homogeneous, distortion-free sintering of the metal restorations. Fitted with a touch screen and a clear display, the furnace is not only easy to use thanks to its one touch operation but compact and reliable.



Code	Size	Dimensions
AG178740	30kg	468 x 461 x 480mm

### PRESSURE REDUCER

Interface between the ceramill® argotherm 2 and the argon gas.

**Code:** AG178706

### HEATING ELEMENT

It is advisable to change all elements at the same time.

Code	Pack
AG178741	1pc

### AMANN GIRRBACH CERAMILL® ARGOVENT 2.0

Improved system now includes sinter base, sintering tray, sinter hood, shielding gas retort, sinter beads and ceramill® argovent tongs.

**Code:** AG178745

### SINTER PEARLS

Pearls for CoCr sintering.

Code	Size
AG178755	150g

### CERAMILL SINTRON® ADDITIONAL POWDER

Powder additive for the ceramill sintron® pearls.

Code	Size
AG178729	10g

## Spot Welding

### ASSISTENT 3000

Spot welding unit with a control for continuous welding, automatic voltage detection, power of 2000A and six stage welding.

Code	Size	Dimensions
38078-000-00	8kg	310 x 335 x 130mm



### MASTER 3000

Spot welding unit with infinite power adjustment, a control for continuous welding, automatic voltage detection, power of 2200A and stageless welding.

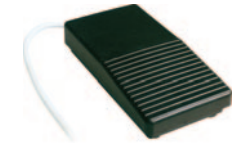
Code	Size	Dimensions
38079-000-00	8.2kg	310 x 335 x 130mm



### SPOT WELDER FOOT PEDAL

Suitable for both spot welders, this foot pedal is a must have accessory, offering full and seamless control.

**Code:** 38080-116-00



### WELDING ELECTRODES

Code	Description	Pack
38085-000-00	Upper Welding Electrode	1pc
38086-000-00	Lower Welding Electrode	1pc



## Steam Cleaners

### AMANN GIRRBACH STEAMER X3

Stainless steel chambered steam cleaner, with a 3,7 litre capacity and a warm up time of only 25mins. Simple and easy to use with low water level alerts. **Please be sure to regularly descale and clean your steam cleaner, failure to do so may result in any warranty claims being invalidated.**

Code	Size	Dimensions
AG116910	12.5kg	275 x 265 x 455mm



Code	Description	Pack
AG1168391	Steamer X3 O-Ring Set For Handspray	3pcs
AG116911	Steamer X3 Lid	1pc
AG116912	Steamer X3 Seal For Lid	1pc

## Steam Cleaners

### VP MIDI

Simple and easy to use steam cleaner with a 3 litre capacity. **Please be sure to regularly descale and clean your steam cleaner, failure to do so may result in any warranty claims being invalidated.**

Code	Size	Dimensions
05SCGV3	12.5kg	305 x 180 x 320mm

### VP MAXI

Simple and easy to use steam cleaner with a 4.9 litre capacity. **Please be sure to regularly descale and clean your steam cleaner, failure to do so may result in any warranty claims being invalidated.**

Code	Size	Dimensions
05SCGV6	15.7kg	320 x 310 x 370mm



## Descaling Liquid

### KALK-X LIQUID

Descaling agent for steam cleaners.

Code	Size
AG116811	4 x 250ml

## Storage

### FLAMMABLE STORAGE CABINET

Zintec coated flammable storage with locking doors, adjustable shelves and HSG51 compliance.

Code	Size	Dimensions
01SSU1	20kg	458 x 458 x 762mm



### FLAMMABLE STORAGE BIN

Roll top bin with a storage capacity of 15 litres, hasp and staple lock and drip tray.

Code	Size	Dimensions
ST2024	19kg	381 x 610 x 510mm



## Surveyors

### TYPE II SURVEYOR



Code	Size
05STB	4kg

### SCHICK S1 BASIC PARALLELOMETER

High quality S1 basic parallelometer for surveying, transmitting and blocking out. Supplied with measuring spindle and lead holder 2.35mm.



Code	Size	Dimensions
99SCH2810	7.2kg	270 x 220 x 400mm

## Suspension Motors

### FARO SUSPENSION MOTOR

High torque (4.9 Ncm) suspension motor that comes complete with motor, cable and foot control with a maximum speed of 22000 rpm. **Handpiece sold separately.**

Code	Size
05SMC	110g



### FARO SUSPENSION MOTOR H/P

Code	Dimensions
04FSMH	170 x 154mm



### FARO SUSPENSION MOTOR SPARE CABLE

Code: 04FSC

### CARLO DE GIORGI SUSPENSION MOTOR H/P

Code	Pack	Size	Dimensions
01T30H	1pc	120g	220 x 140mm



## Ultrasonic Baths

### QC ULTRASONIC

High quality 2 litre ultrasonic unit, supplied with basket and lid.

Code	Size	Dimensions
z9WUQC	2.6kg	163 x 265 x 196mm

### RENFERT EASYCLEAN

Easy to use ultrasonic cleaning unit with a 2.75 litre capacity. With temperature controls and a timer, the ultrasonic uses a high performance transducer system to ensure efficient yet gentle cleaning.

Code	Size	Dimensions
87R18500000	3.3kg	179 x 300 x 214mm

### ULTRASONIC BEAKER

600ml glass beaker.

Code	Pack	Dimensions
z9UGB	1pc	85Ø x 130mm



## Vacuum Mixers

### CENTRI™ VACUUM MIXER

Cost effective vacuum mixer supplied with 500ml bowl and table stand.

Code	Size	Dimensions
46MSVM	10kg	220 x 160 x 610mm

### CENTRI™ VACUUM MIXER ACCESSORIES

Code	Description	Pack
46MSMP200	200ml Bowl Only	1pc
46MSMP500	500ml Bowl Only	1pc
46MSMP1000	1000ml Bowl Only	1pc
46MSMP2000	2000ml Bowl Only	1pc



## Vacuum Mixers

### AMANN GIRRBACH SMARTMIX X2

Feature laden vacuum mixer, supplied with wall mount bracket and 500ml bowl. **Stand sold separately.**

- ▶ Multi-functional dial for quick control and program access
- ▶ Post vacuum feature
- ▶ Round bowls for ease of cleaning
- ▶ Patented mixing spatula for optimised performance

Code	Size	Dimensions
AG115700	8.5kg	250 x 160 x 350mm

### AMANN GIRRBACH SMARTMIX X2 ACCESSORIES

Code	Description	Size	Dimensions
AG115730	Smartmix Stand	7.9kg	320 x 220 x 600mm

Code	Description	Pack
AG115620	100ml Bowl and Mixing Paddle	1pc
AG115621	100ml Bowl Only	1pc
AG115630	250ml Bowl and Mixing Paddle	1pc
AG115631	250ml Bowl Only	1pc
AG115640	500ml Bowl and Mixing Paddle	1pc
AG115641	500ml Bowl Only	1pc
AG115650	750ml Bowl and Mixing Paddle	1pc
AG115651	750ml Bowl Only	1pc
AG115660	1000ml Bowl and Mixing Paddle	1pc
AG115661	1000ml Bowl Only	1pc





## Vacuum Mixers

### RENFERT TWISTER

Vacuum mixer supplied with wall mount and 500ml bowl. **Stand sold separately.**

- ▶ Direct manual control
- ▶ Impressive motor power
- ▶ Vacuum level can be regulated

Code	Size	Dimensions
87R182600003	5.2kg	235 x 152 x 285mm

### RENFERT TWISTER VENTURI

Vacuum mixing unit aided by compressed air. Supplied with wall mount and 500ml bowl. **Stand sold separately.**

- ▶ Direct manual control
- ▶ Impressive motor power
- ▶ Vacuum level can be regulated

Code	Size	Dimensions
87R182700003	4kg	235 x 152 x 320mm

### RENFERT TWISTER EVOLUTION

High torque vacuum mixer, supplied with a wall mount and 500ml bowl. **Stand sold separately.**

- ▶ Reverse rotation
- ▶ Post vacuum
- ▶ Programmable
- ▶ Prespatulation
- ▶ Prevacuum

Code	Size	Dimensions
87R182800003	5.2kg	235 x 152 x 285mm

### RENFERT TWISTER EVOLUTION VENTURI

High torque vacuum mixing unit aided by compressed air. Supplied with a wall mount and 500ml bowl. **Stand sold separately.**

- ▶ Reverse rotation
- ▶ Post vacuum
- ▶ Programmable
- ▶ Prespatulation
- ▶ Prevacuum

Code	Size	Dimensions
87R182900003	4kg	235 x 152 x 320mm



## Vacuum Mixers

### RENFERT TWISTER ACCESSORIES

Code	Description	Size	Dimensions
87R18210102	Twister Stand	8.7kg	300 x 220 x 600mm

Code	Description	Pack
87R18200200	200ml Bowl and Mixing Paddle	1pc
87R18200220	200ml Bowl Only	1pc
87R18200500	500ml Bowl and Mixing Paddle	1pc
87R18200520	500ml Bowl Only	1pc
87R18200700	700ml Bowl and Mixing Paddle	1pc
87R18200720	700ml Bowl Only	1pc
87R18201001	1000ml Bowl and Mixing Paddle	1pc
87R18201020	1000ml Bowl Only	1pc
87R18230500	500ml Alginate Bowl and Mixing Paddle	1pc



## Vacuum/Pressure Forming Units

### MACHINE III VACUUM FORMER

Cost effective, reliable, dual chamber vacuum forming unit. Suitable for square blanks.

Code	Size	Dimensions
05VAU	10kg	254 x 216 x 362mm



### DREVE DRUFOSMART

Pressure forming unit with a fixed operating bar pressure of 2.5 bar. Suitable for 120mmØ blanks up to a thickness of 5mm, with an easy to use semi-automatic operation. Digital and acoustic feedback shows the heating and cooling phase.

Code	Description	Size	Dimensions
D3200	Red	14kg	290 x 290 x 415mm
D32001	Silver	14kg	290 x 290 x 415mm



## Vacuum/Pressure Forming Units

### DREVE DRUFOSMART SCAN

Pressure forming unit with an operating bar pressure of 2 - 4 bar. Suitable for 120mmØ blanks up to a thickness of 5mm, with an easy to use semi-automatic operation. Digital and acoustic feedback shows the heating and cooling phase. Integrated bar code scanner identifies the blanks and their heating parameters.

Code	Description	Size	Dimensions
D3400	Red	14kg	290 x 290 x 415mm
D34001	Silver	14kg	290 x 290 x 415mm



### DREVE DRUFOMAT SCAN

Premium pressure forming unit with a fully adjustable operating bar pressure of up to 6 bar, making it ideal for laminating. Suitable for 120mmØ blanks up to a thickness of 5mm, with an easy to use automatic operation. Digital and acoustic feedback shows the heating and cooling phase. Integrated bar code scanner identifies the blanks and their heating parameters.

Code	Description	Size	Dimensions
D3300	Red	16kg	290 x 290 x 460mm
D33001	Silver	16kg	290 x 290 x 460mm
D33002	Custom RAL Colour	16kg	290 x 290 x 460mm



### DREVE DRUFOMAT PRESSURE INSERT

Turns your Drufoformat Scan into a hydraulic compressor with a capacity for up to 2 brass flasks.



Code	Pack
D3211	1pc

### DREVE DRUFOMAT POLY INSERT

Turns your Drufoformat Scan into a pressure polymeriser with an adjustable pressure of 2 - 6 bar.



Code	Pack
D3227	1pc

### DREVE DRUFOMAT ACCESSORY PACK

Includes both the Pressure Insert and the Poly Insert.



Code	Pack
D3300ACCES	2pcs

## Vibrators

### SIMED VIBRO 4

100W power.

Code	Size	Dimensions
05SV4	3kg	170 x 170 x 85mm



### SIMED VIBRO 6

200W power with switch to control low or high vibration.

Code	Size	Dimensions
05SV6	5kg	155 x 240 x 100mm



### SIMED VIBRO 12

350W power with extra large platform.

Code	Size	Dimensions
05SV12	9kg	250 x 350 x 130mm



### RENFERT VIBRAX

With four power adjustments and two wave ranges, the premium Vibrax vibrator will offer a maintenance free, long service life. The efficient vibration will not be wasted by transferring the energy to the bench as the housing is oscillation decoupled.

Code	Size	Dimensions
87R18300000	6.4kg	220 x 275 x 140mm



### RENFERT VIBRAX SPHERE

Ensures bubble free pouring.

Code	Size
87R18300001	1pc



## Wax Bath

### RENFERT WAXPROFI

With a large 110ml capacity and integrated lid to protect the wax, the Waxprofi will save you time and in a safer working environment. The unit can be preheated and the wax temperature can be adjusted from 40 - 100°C so the consistency will be as you like it.



Code	Size	Dimensions
87R144000003	600g	120 x 178 x 54mm

## Wax Knives

### AMANN GIRRBACH SMARTWAX® DUO

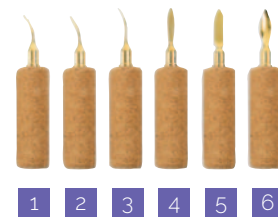
With a temperature range of between 50 - 220°C, the smartwax® duo has three programmable options and independent temperature control. Supplied with one handpiece and small probe.



Code	Size	Dimensions
AG116270	1kg	130 x 150 x 50mm

### AMANN GIRRBACH SMARTWAX® DUO ACCESSORIES

Code	Description	Pack	No.
AG116280	Additional Handpiece and Cord	1pc	
AG116281	Small Probe	1pc	1
AG116282	Large Probe	1pc	2
AG116283	Needle	1pc	3
AG116284	Beaver Tail	1pc	4
AG116285	Knife	1pc	5
AG116286	Spoon	1pc	6



## Wax Knives

### RENFERT WAXELECTRIC LIGHT

Easy to use analogue controlled wax knife, available in a one or two handpiece format. The heating element is integrated in the tip, which reduces contraction of the wax and the unit has a temperature range of 50 - 200°C. The two handpiece version can be operated simultaneously.

Code	Description	Pack	Dimensions
87R215000003	Waxlectric light I (includes medium tip)	220g	80 x 91 x 53mm
87R215100003	Waxlectric light II (includes small and large tip)	240g	80 x 91 x 53mm



### RENFERT WAXELECTRIC

Easy to use, programmable and digitally controlled wax knife, available in a one or two handpiece format. The heating element is integrated in the tip, which reduces contraction of the wax and the unit has a temperature range of 50 - 200°C. The two handpiece version can be operated simultaneously.

Code	Description	Pack	Dimensions
87R2156000	Waxlectric I (includes integrated tip holder and medium tip)	240g	98 x 120 x 60mm
87R2157000	Waxlectric II (includes integrated tip holder, small and large tip)	270g	98 x 150 x 60mm



# Wax Knives

## RENFERT WAXLECTRIC ACCESSORIES



Code	Description	Pack	No.
87R21550101	Small Tip	1pc	1
87R21550102	Medium Tip	1pc	2
87R21550103	Large Tip	1pc	3
87R21550104	Narrow Knife	1pc	4
87R21550105	Wide Knife	1pc	5
87R21550106	Chamfered Knife	1pc	6
87R21550107	Horizontal Hollenback	1pc	7
87R21550108	Vertical Hollenback	1pc	8
87R21550109	Angled Mini Tip	1pc	9
87R21550110	Lancet Blade	1pc	10
87R21550111	Beavertail Blade	1pc	11
87R21550112	Large Wax Knife	1pc	12

## length & distance

## temperature

	multiply by	
inches	2.5400	cm
feet	0.3048	m
yards	0.9144	m
miles	1.6093	km
mm	0.0394	inches
cm	0.3937	inches
m	3.2808	feet
m	1.0936	yards
km	0.6214	miles

convert fahrenheit to celsius:

$$c = (f - 32) / 1.8$$

or

$$c = (f - 32) \times 5 / 9$$

convert celsius to farhenheit:

$$f = c \times 1.8 + 32$$

or

$$f = c \times 9 / 5 + 32$$

## volume & capacity

## weight & mass

	multiply by		multiply by	
pint (imp)	0.5683	ltrs	ounces	28.3495 grams
quarts (imp)	1.1365	ltrs	pounds	0.4536 kilograms
pint (u.s)	0.4735	ltrs	kilograms	2.2046 pounds
quarts (u.s)	0.9463	ltrs		
ltrs	1.7598	pint (imp)		
ltrs	0.8799	quarts (imp)		
ltrs	2.1134	pint (u.s)		
ltrs	1.0567	quarts (u.s)		