

CROWN & BRIDGE

A range of contemporary and classical materials, which include new pressable systems, traditional bonded ceramics, composites and consumables.

IN THIS SECTION:

Acrylic Dentine	50	Investment	130
Adhesives	51	Isolators & Separators	131
Alloy	52	Miscellaneous	132
Articulating Paper	53	Mixing Palettes	135
Blast Media	56	Model Systems	136
Bonders & Primers	57	Model System Consumables	137
Kolinsky Brushes	58	Model Tray System	139
Synthetic Brushes	60	Occlusal Spray	141
Burnout Posts	62	Scanning Spray	141
Casting Rings & Formers	62	Retention Pins	141
Bonded Ceramic	64	Retention Pin Accessories	143
Pressable Ceramic	93	Plasters	143
Ceramic Additives	100	Plungers	144
Ceramic Firing	100	Polishing	144
Characterisation & Staining	102	Retention Rings	146
Composite	106	Retention Beads	146
Crown Stands	118	Ring Liner	146
Debubbliser	119	Cervical Wax	147
Die Hardeners & Sealers	119	Diagnostic Wax	148
Die Spacers	120	Dipping Wax	150
Die Stones	121	Gingiva Wax	150
Disposable Articulators	122	Inlay Wax	151
Etching	122	Preformed Wax	151
Gingiva Masking/Creation	123	Press Ceramic Waxes	152
Glazing	125	Scanning Wax	153
Ceramic Hand Tools	126	Sculpturing Wax	153
Composite Hand Tools	127	Wax Sticks	156
General Hand Tools	128	Sprue Wax	157
Plaster Hand Tools	128	Sticky Wax	157
Wax Carvers	129	Wax Wire	158
Hand Tool Kits	130		

Acrylic Dentine

CENTRI™ TOOTH SHADES

Economically priced dentines, available in a variety of shades. A quick and easy solution to producing temporary teeth. Used in conjunction with Centri™ Base CC liquid.

Heat Cure

Code	Description	Size
01TSH-VA1	VA1	100g
01TSH-VA2	VA2	100g
01TSH-VA3	VA3	100g
01TSH-VA3.5	VA3.5	100g
01TSH-VA4	VA4	100g
01TSH-VB1	VB1	100g
01TSH-VB3	VB3	100g
01TSH-VC2	VC2	100g
01TSH-VC4	VC4	100g
01TSH-01	01	100g
01TSH-02	02	100g
01TSH-03	03	100g
01TSH-04	04	100g
01TSH-05	05	100g
01TSH-15	15	100g
01TSH-G4	G4	100g
01TSH-G6	G6	100g
01TSH-G8	G8	100g
01TSH-A3	A3	100g
01TSH-A9	A9	100g



Cold Cure

Code	Description	Size
01TSC-VA1	VA1	100g
01TSC-VA2	VA2	100g
01TSC-VA3	VA3	100g
01TSC-VA3.5	VA3.5	100g
01TSC-VA4	VA4	100g
01TSC-VB1	VB1	100g
01TSC-VB3	VB3	100g
01TSC-VC2	VC2	100g
01TSC-VC4	VC4	100g
01TSC-01	01	100g
01TSC-02	02	100g



Acrylic Dentine

Cold Cure

Code	Description	Size
01TSC-03	03	100g
01TSC-04	04	100g
01TSC-05	05	100g
01TSC-15	15	100g
01TSC-G4	G4	100g
01TSC-G6	G6	100g
01TSC-G8	G8	100g
01TSC-A3	A3	100g
01TSC-A9	A9	100g



Adhesives

CENTRI™ GLUE

Medium viscosity general-purpose glue.

Code: 07LAP

Size: 20g

CENTRI™ ACTIVATOR

Aerosol based activator with fine mist.

Code: 07ZAP

Size: 200ml

CENTRI™ DEBONDER

Used to dissolve cyanoacrylates.

Code: 07CDB

Size: 20ml

RENFERT LIQUICOL

Extremely low viscosity cyanoacrylate for sealing plaster models and attaching disposable articulators.

Code: 87R17320020

Size: 2 x 20g



Adhesives

VERSAGLUE

High quality cyanoacrylates suitable for stone, metals, ceramics and resins.

Code	Description	Size
HPD2025	PX-4 Thin	28g
HPD2026	PX-40 Medium	28g
HPD2027	PX-400 Thick	28g



Alloy

REMANIUM® STAR

- ▶ Premium CoCr bonding alloy
- ▶ Exceptional melting and flow behaviour
- ▶ Easy to polish
- ▶ No oxide firing required
- ▶ Suitable for a huge variety of indications including long span bridges and implant supported supra-structures
- ▶ Tensile strength 845 Mpa
- ▶ CTE 14.1

Code	Size
38102-620-00	1kg



Co	Cr	W	Si
60.5	28	9	1.5

REMANIUM® CSE

- ▶ NiCr bonding alloy
- ▶ Amazing value for money
- ▶ Biocompatible - beryllium free
- ▶ Fast, easy & reliable to cast
- ▶ Tensile strength 580 MPa
- ▶ CTE 14

Code	Size
38102-403-05	1kg



Ni	Cr	Mo	Fe
61	26	11	1.2

Articulating Paper

DETEX™

Code	Description	Pack	Size
01DAP	Blue - double sided	144pcs	40µ



BAUSCH STRIPS (WITH DISPENSER)

Code	Description	Pack	Size
BK01	Blue	300pcs	200µ
BK02	Red	300pcs	200µ



BAUSCH REFILL STRIPS

Code	Description	Pack	Size
BK1001	Blue - for BK01	300pcs	200µ
BK1002	Red - for BK02	300pcs	200µ



BAUSCH BLUE BOOKLET

Code	Description	Pack	Size
BK05	Blue - for BK01	300pcs	200µ



BAUSCH HORSESHOE

Code	Description	Pack	Size
BK03	Blue	50pcs	200µ
BK04	Red	50pcs	200µ



BAUSCH ARTI-CHECK® (WITH DISPENSER)

Code	Description	Size	Dimensions
BK13	Blue - 15m	40µ	16mm
BK14	Red - 15m	40µ	16mm
BK15	Blue - 10m	40µ	22mm
BK16	Red - 10m	40µ	22mm



Articulating Paper

BAUSCH ARTI-CHECK® REFILL BOX

Code	Description	Size	Dimensions
BK1013	Blue - 15m	40µ	16mm
BK1014	Red - 15m	40µ	16mm
BK1015	Blue - 10m	40µ	22mm
BK1016	Red - 10m	40µ	22mm



BAUSCH ARTI-CHECK® BOOKLET

Code	Description	Pack	Size
BK09	Blue	200pcs	40µ
BK10	Red	200pcs	40µ



BAUSCH ARTI-CHECK® HORSESHOE

Code	Description	Pack	Size
BK17	Blue	150pcs	40µ
BK18	Red	150pcs	40µ



BAUSCH ARTI-CHECK® PRE CUT STRIPS

Code	Description	Pack	Size
BK61	Blue	200pcs	40µ
BK62	Red	200pcs	40µ
BK63	Blue/Red	200pcs	40µ



BAUSCH ARTI-CHECK® PRE CUT STRIPS BOOKLET

Code	Description	Pack	Size
BK80	Blue/Red	200pcs	40µ



BAUSCH ARTI-CHECK® PRE CUT STRIPS HORSESHOE

Code	Description	Pack	Size
BK81	Blue/Red	150pcs	40µ



Articulating Paper

BAUSCH SILK RIBBON

Code	Description	Size	Dimensions
BK877	Blue - 3m	80µ	80mm
BK06	Red - 3m	80µ	80mm
BK876	Green - 3m	80µ	80mm
BK07	Blue - 10m	80µ	16mm
BK08	Red - 10m	80µ	16mm



BAUSCH ARTI-FOL® PLASTIC SINGLE SIDED

Code	Description	Size	Dimensions
BK23	Blue - 20m	8µ	22mm
BK21	Red - 20m	8µ	22mm



BAUSCH ARTI-FOL® METALLIC SINGLE SIDED

Code	Description	Size	Dimensions
BK33	Blue - 20m	12µ	22mm
BK31	Red - 20m	12µ	22mm
BK32	Green - 20m	12µ	22mm
BK30	Black - 20m	12µ	22mm



BAUSCH ARTI-FOL® PLASTIC DOUBLE SIDED

Code	Description	Size	Dimensions
BK27	Blue - 20m	8µ	22mm
BK25	Red - 20m	8µ	22mm



BAUSCH ARTI-FOL® METALLIC DOUBLE SIDED

Code	Description	Size	Dimensions
BK28	Black/Red - 20m	12µ	22mm



Blast Media

RENFERT COBRA

Extremely pure (99.7% Al₂O₃), sharp-edged aluminium oxide abrasive. Supplied in hermetically sealed containers to aid longevity and integrity of the medium.

Code	Description	Size
87R15941105	White 25µm	5kg
87R15941205	White 50µm	5kg
87R15941112	White 50µm	12.5kg
87R15841005	White 90µm	5kg
87R15831005	White 110µm	5kg
87R15831012	White 110µm	12.5kg
87R15871005	Pink 125µm	5kg
87R15871012	Pink 125µm	12.5kg
87R15851005	White 250µm	5kg
87R15851012	White 250µm	12.5kg



PURE WHITE ALUMINA

Grade specific pure white alumina available in a range of grits and sizes.

Code	Description	Size
54WAO25	M25	25kg
54WAO258KG	M25	8kg
54WAO50	M50	25kg
54WAO508KG	M50	8kg
54WAO100	M100	25kg
54WAO1008KG	M100	8kg
54WAO250	M250	25kg
54WAO2508KG	M250	8kg

RENFERT ROLLOBLAST

Premium non-abrasive glass beads for use with precious and non-precious alloys to provide a guaranteed matt finish. Supplied in hermetically sealed containers to aid longevity and integrity of the medium.

Code	Description	Size
87R15941305	50µm (170–100 mesh)	5kg
87R15942312	50µm (170–100 mesh)	12.5kg
87R15891005	100µm (400–200 mesh)	5kg



For the complete range of blast media please see from p478.

Bonders & Primers

SCHÜTZ SEBOND™ IMPLANT

Creates a secure bond between ceramic and/or zirconia and metal abutments including titanium.



Code	Size
SZ640075	5ml

SCHÜTZ ALPHALINK IMPLANT

Creates a secure bond between ceramic and/or zirconia and metal abutments including titanium, supplied in an easy to use syringe.



Code	Size
SZ640076	2 x 4g

SCHÜTZ SEBOND™ SMART ZR

Creates a secure bond between zirconia and composite.



Code	Size
SZ640068	5ml

SCHÜTZ SEBOND™ SMART

Creates a secure chemical bond between any combination of acrylic or composites with metal.



Code	Size
SZ640066	5ml

VITA NP BOND PASTE

Ready to use paste that increases the bond between ceramic and alloy by reducing the CTE tension and thus eliminating cracking. The golden hue increases the final aesthetics of the restoration.



Code	Size
VBNPB5	5g

SILAN METAL PRIMER

Efficient and cost effective metal primer without the noxious smell.



Code	Size
07GCMP	8ml

Kolinsky Brushes

STANDARD KOLINSKY

Good quality, economic kolinsky brush range.

Code	Description	Pack
64CBK0	#0	1pc
64CBK1	#1	1pc
64CBK4	#4	1pc
64CBK6	#6	1pc
64CBK8	#8	1pc



PURABRUSH

Premium kolinsky brush with defined, sharply pointed tips and balanced aluminium handle. Magnetic quick-change tip system that is compatible with screw on systems from other manufacturers.

Code	Description	Pack
HPD203-0002	#2	1pc
HPD203-0004	#4	1pc
HPD203-0006	#6	1pc
HPD203-0008	#8	1pc
HPD203-0009	Stain	1pc
HPD203-0010	Opaque	1pc
HPD203-1002	Tip #2	2pcs
HPD203-1004	Tip #4	2pcs
HPD203-1006	Tip #6	2pcs
HPD203-1008	Tip #8	2pcs
HPD203-1009	Tip Stain	2pcs
HPD203-1010	Tip Opaque	2pcs
HPD203-2000	4 in 1 Kit (PURAbbrush #8 + Tip #6 + Tip #4 + Tip #2)	4pcs
HPD203-2002	Master Kit #2 (PURAbbrush #2 + PURAbbrush stain + PURAbbrush opaque)	3pcs
HPD203-2004	Master Kit #4 (PURAbbrush #4 + PURAbbrush stain + PURAbbrush opaque)	3pcs
HPD203-2006	Master Kit #6 (PURAbbrush #6 + PURAbbrush stain + PURAbbrush opaque)	3pcs
HPD203-2008	Master Kit #8 (PURAbbrush #8 + PURAbbrush stain + PURAbbrush opaque)	3pcs



Kolinsky Brushes

FUSIONBRUSH

Premium kolinsky brush with synthetic fibre reinforcement. Enhances the stability of the pure kolinsky tip, mounted on a balanced aluminium handle. Magnetic quick-change tip system that is compatible with screw on systems from other manufacturers.

Code	Description	Pack
HPD204-0002	#2	1pc
HPD204-0004	#4	1pc
HPD204-0006	#6	1pc
HPD204-0008	#8	1pc
HPD204-0009	Stain	1pc
HPD204-0010	Opaque	1pc
HPD204-1002	Tip #2	2pcs
HPD204-1004	Tip #4	2pcs
HPD204-1006	Tip #6	2pcs
HPD204-1008	Tip #8	2pcs
HPD204-1009	Tip Stain	2pcs
HPD204-1010	Tip Opaque	2pcs
HPD204-2000	4 in 1 Kit (PURAbbrush #8 + Tip #6 + Tip #4 + Tip #2)	4pcs
HPD204-2002	Master Kit #2 (FUSIONbrush #2 + FUSIONbrush stain + FUSIONbrush opaque)	3pcs
HPD204-2004	Master Kit #4 (FUSIONbrush #4 + FUSIONbrush stain + FUSIONbrush opaque)	3pcs
HPD204-2006	Master Kit #6 (FUSIONbrush #6 + FUSIONbrush stain + FUSIONbrush opaque)	3pcs
HPD204-2008	Master Kit #8 (FUSIONbrush #8 + FUSIONbrush stain + FUSIONbrush opaque)	3pcs



Kolinsky Brushes

RENFERT LAY:ART

Code	Description	Pack
87R17250002	#2	2pcs
87R17250004	#4 Slim	1pc
87R17250006	#6 Slim	1pc
87R17250008	#8 Slim	1pc
87R17250014	#4 Bold	1pc
87R17250016	#6 Bold	1pc
87R17250018	#8 Bold	1pc
87R17250000	Stain	2pcs
87R17250001	Opaque	2pcs

For more information about the complete range of kolinsky brushes, please contact us.



Synthetic Brushes

RENFERT TAKANISHI

Ever popular synthetic bristle brush.

Code	Description	Pack
87R17140001	#1	2pcs
87R17140002	#2	2pcs
87R17140004	#4	2pcs
87R17140006	#6	2pcs
87R17140008	#8	2pcs
87R17140200	Opaque	2pcs



Synthetic Brushes

NYLOBRUSH

Hybrid synthetic brush with large water reservoir and stable tip. Magnetic quick-change tip system that is compatible with screw on systems from other manufacturers.

Code	Description	Pack
HPD210-0002	#2	1pc
HPD210-0004	#4	1pc
HPD210-0006	#6	1pc
HPD210-0008	#8	1pc
HPD210-0009	Stain	1pc
HPD210-0010	Opaque	1pc
HPD210-1002	Tip #2	2pcs
HPD210-1004	Tip #4	2pcs
HPD210-1006	Tip #6	2pcs
HPD210-1008	Tip #8	2pcs
HPD210-1009	Tip Stain	2pcs
HPD210-1010	Tip Opaque	2pcs
HPD210-2000	4 in 1 Kit (NYLObrush #8 + Tip #6 + Tip #4 + Tip #2)	4pcs
HPD210-2002	Master Kit #2 (NYLObrush #2 + NYLObrush stain + NYLObrush opaque)	3pcs
HPD210-2004	Master Kit #4 (NYLObrush #4 + NYLObrush stain + NYLObrush opaque)	3pcs
HPD210-2006	Master Kit #6 (NYLObrush #6 + NYLObrush stain + NYLObrush opaque)	3pcs
HPD210-2008	Master Kit #8 (NYLObrush #8 + NYLObrush stain + NYLObrush opaque)	3pcs



For more information about the complete range of synthetic brushes, please contact us.

Burnout Posts

PARAPOST® XP™

Prefabricated casting components for the direct/indirect casting technique. Ideal for clinical situations requiring the additional strength of a precise, one-piece post/core and choice of alloy.

Code	Description	Pack
37PPB	Blue (1.14mm)	10pcs
37PPB25	Blue (1.14mm)	25pcs
37PPBK	Black (1.5mm)	10pcs
37PPBK25	Black (1.5mm)	25pcs
37PPBR	Brown (0.9mm)	10pcs
37PPBR25	Brown (0.9mm)	25pcs
37PPG	Green (1.75mm)	10pcs
37PPG25	Green (1.75mm)	25pcs
37PPP	Purple (1.4mm)	10pcs
37PPP25	Purple (1.4mm)	25pcs
37PPR	Red (1.25mm)	10pcs
37PPR25	Red (1.25mm)	25pcs
37PPY	Yellow (1mm)	10pcs
37PPY25	Yellow (1mm)	25pcs



Casting Rings & Formers

DENTAURUM RING FORMER

Special ring former, with silicone ring included for press ceramic investing procedures. The silicone ring enables the casting ring to be easily removed after the investment has set.

Code	Description
38260-360-10	100g
38260-360-20	200g



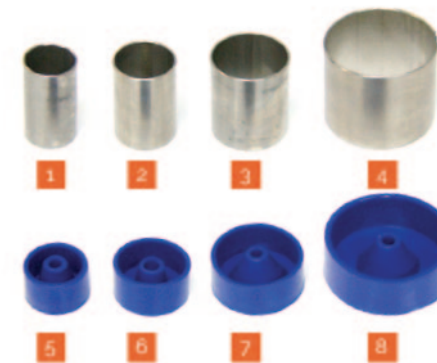
Casting Rings & Formers

REMA® FORM

Range of casting rings and accessories made from impact-resistant plastic.



Code	Description
38127-306-00	rema® Form Ring Small
38127-307-00	rema® Form Ring Medium
38127-308-00	rema® Form Ring Large
38127-309-00	rema® Form universal base
38127-310-00	rema® Form universal base with cone
38127-311-00	rema® Form sprue former with retention pin
38127-312-00	rema® Form sprue former with slide tube



INOX CASTING RINGS

Range of stainless steel, long life casting rings and formers.

Code	Description	No.
01CRX1	1X ring	1
01CRX2	2X ring	2
01CRX3	3X ring	3
01CRX6	6X ring	4
05SPX1	1X former	5
05SPX2	2X former	6
05SPX3	3X former	7
05SPX6	6X former	8

Bonded Ceramic

VITAVM®9

VITAVM®9 is a highly aesthetic, fine structure feldspar ceramic that is perfectly adapted to the CTE value of zirconia frameworks. The composition of pure grade potash and albite feldspar materials offers brilliant shade effects as well as optimum physical properties, such as extreme flexural strength. Thanks to its homogeneous and compact surface, VITAVM®9 supports outstanding grinding and polishing, particularly in situ. This results in smooth and densely compact surfaces, which significantly reduces plaque build-up. Exceptional bonding and minimal shrinkage provide reliable and long-term results.



VITAVM®9 ADD-ON

Code	Description	Pack
VB4229112	Add-On ADD1	12g
VB4229212	Add-On ADD2	12g
VB4229312	Add-On ADD3	12g
VB4229412	Add-On ADD4	12g
VB4229512	Add-On ADD5	12g
VB4229612	Add-On ADD6	12g
VB4229712	Add-On ADD7	12g
VB4229812	Add-On ADD8	12g



VITAVM®9 CORRECTIVE & CHROMA

Code	Description	Pack
VB4222112	Corrective COR1	12g
VB4222212	Corrective COR2	12g
VB4222312	Corrective COR3	12g
VB4224112	Chroma Plus CP1	12g
VB4224212	Chroma Plus CP2	12g
VB4224312	Chroma Plus CP3	12g
VB4224412	Chroma Plus CP4	12g
VB4224512	Chroma Plus CP5	12g



Bonded Ceramic

VITAVM®9 DENTINE

Code	Description	Pack
VB4203112	Base Dentine 0M1	12g
VB4203150	Base Dentine 0M1	50g
VB4203212	Base Dentine 0M2	12g
VB4203250	Base Dentine 0M2	50g
VB4203312	Base Dentine 0M3	12g
VB4203350	Base Dentine 0M3	50g
VB4203412	Base Dentine 1M1	12g
VB4203450	Base Dentine 1M1	50g
VB4203512	Base Dentine 1M2	12g
VB4203550	Base Dentine 1M2	50g
VB4203612	Base Dentine 2L1.5	12g
VB4203650	Base Dentine 2L1.5	50g
VB4203712	Base Dentine 2L2.5	12g
VB4203750	Base Dentine 2L2.5	50g
VB4203812	Base Dentine 2M1	12g
VB4203850	Base Dentine 2M1	50g
VB4203912	Base Dentine 2M2	12g
VB4203950	Base Dentine 2M2	50g
VB4204012	Base Dentine 2M3	12g
VB4204050	Base Dentine 2M3	50g
VB4204112	Base Dentine 2R1.5	12g
VB4204150	Base Dentine 2R1.5	50g
VB4204212	Base Dentine 2R2.5	12g
VB4204250	Base Dentine 2R2.5	50g
VB4204312	Base Dentine 3L1.5	12g
VB4204350	Base Dentine 3L1.5	50g
VB4204412	Base Dentine 3L2.5	12g
VB4204450	Base Dentine 3L2.5	50g
VB4204512	Base Dentine 3M1	12g
VB4204550	Base Dentine 3M1	50g
VB4204612	Base Dentine 3M2	12g
VB4204650	Base Dentine 3M2	50g
VB4204712	Base Dentine 3M3	12g
VB4204750	Base Dentine 3M3	50g
VB4204812	Base Dentine 3R1.5	12g
VB4204850	Base Dentine 3R1.5	50g
VB4204912	Base Dentine 3R2.5	12g
VB4204950	Base Dentine 3R2.5	50g



Bonded Ceramic

VITAVM®9 DENTINE

Code	Description	Pack
VB4205012	Base Dentine 4L1.5	12g
VB4205050	Base Dentine 4L1.5	50g
VB4205112	Base Dentine 4L2.5	12g
VB4205150	Base Dentine 4L2.5	50g
VB4205212	Base Dentine 4M1	12g
VB4205250	Base Dentine 4M1	50g
VB4205312	Base Dentine 4M2	12g
VB4205350	Base Dentine 4M2	50g
VB4205412	Base Dentine 4M3	12g
VB4205450	Base Dentine 4M3	50g
VB4205512	Base Dentine 4R1.5	12g
VB4205550	Base Dentine 4R1.5	50g
VB4205612	Base Dentine 4R2.5	12g
VB4205650	Base Dentine 4R2.5	50g
VB4205712	Base Dentine 5M1	12g
VB4205750	Base Dentine 5M1	50g
VB4205812	Base Dentine 5M2	12g
VB4205850	Base Dentine 5M2	50g
VB4205912	Base Dentine 5M3	12g
VB4205950	Base Dentine 5M3	50g
VB4243112	Base Dentine A1	12g
VB4243150	Base Dentine A1	50g
VB4243212	Base Dentine A2	12g
VB4243250	Base Dentine A2	50g
VB4243312	Base Dentine A3	12g
VB4243350	Base Dentine A3	50g
VB4243412	Base Dentine A3.5	12g
VB4243450	Base Dentine A3.5	50g
VB4243512	Base Dentine A4	12g
VB4243550	Base Dentine A4	50g
VB4243612	Base Dentine B1	12g
VB4243650	Base Dentine B1	50g
VB4243712	Base Dentine B2	12g
VB4243750	Base Dentine B2	50g
VB4243812	Base Dentine B3	12g
VB4243850	Base Dentine B3	50g
VB4243912	Base Dentine B4	12g
VB4243950	Base Dentine B4	50g



Bonded Ceramic

VITAVM®9 DENTINE

Code	Description	Pack
VB4244012	Base Dentine C1	12g
VB4244050	Base Dentine C1	50g
VB4244112	Base Dentine C2	12g
VB4244150	Base Dentine C2	50g
VB4244212	Base Dentine C3	12g
VB4244250	Base Dentine C3	50g
VB4244312	Base Dentine C4	12g
VB4244350	Base Dentine C4	50g
VB4244412	Base Dentine D2	12g
VB4244450	Base Dentine D2	50g
VB4244512	Base Dentine D3	12g
VB4244550	Base Dentine D3	50g
VB4244612	Base Dentine D4	12g
VB4244650	Base Dentine D4	50g
VB4206112	Transparent Dentine 0M1	12g
VB4206150	Transparent Dentine 0M1	50g
VB4206212	Transparent Dentine 0M2	12g
VB4206250	Transparent Dentine 0M2	50g
VB4206312	Transparent Dentine 0M3	12g
VB4206350	Transparent Dentine 0M3	50g
VB4206412	Transparent Dentine 1M1	12g
VB4206450	Transparent Dentine 1M1	50g
VB4206512	Transparent Dentine 1M2	12g
VB4206550	Transparent Dentine 1M2	50g
VB4206612	Transparent Dentine 2L1.5	12g
VB4206650	Transparent Dentine 2L1.5	50g
VB4206712	Transparent Dentine 2L2.5	12g
VB4206750	Transparent Dentine 2L2.5	50g
VB4206812	Transparent Dentine 2M1	12g
VB4206850	Transparent Dentine 2M1	50g
VB4206912	Transparent Dentine 2M2	12g
VB4206950	Transparent Dentine 2M2	50g
VB4207012	Transparent Dentine 2M3	12g
VB4207050	Transparent Dentine 2M3	50g
VB4207112	Transparent Dentine 2R1.5	12g
VB4207150	Transparent Dentine 2R1.5	50g
VB4207212	Transparent Dentine 2R2.5	12g
VB4207250	Transparent Dentine 2R2.5	50g



Bonded Ceramic

VITAVM®9 DENTINE

Code	Description	Pack
VB4207312	Transparent Dentine 3L1.5	12g
VB4207350	Transparent Dentine 3L1.5	50g
VB4207412	Transparent Dentine 3L2.5	12g
VB4207450	Transparent Dentine 3L2.5	50g
VB4207512	Transparent Dentine 3M1	12g
VB4207550	Transparent Dentine 3M1	50g
VB4207612	Transparent Dentine 3M2	12g
VB4207650	Transparent Dentine 3M2	50g
VB4207712	Transparent Dentine 3M3	12g
VB4207750	Transparent Dentine 3M3	50g
VB4207812	Transparent Dentine 3R1.5	12g
VB4207850	Transparent Dentine 3R1.5	50g
VB4207912	Transparent Dentine 3R2.5	12g
VB4207950	Transparent Dentine 3R2.5	50g
VB4208012	Transparent Dentine 4L1.5	12g
VB4208050	Transparent Dentine 4L1.5	50g
VB4208112	Transparent Dentine 4L2.5	12g
VB4208150	Transparent Dentine 4L2.5	50g
VB4208212	Transparent Dentine 4M1	12g
VB4208250	Transparent Dentine 4M1	50g
VB4208312	Transparent Dentine 4M2	12g
VB4208350	Transparent Dentine 4M2	50g
VB4208412	Transparent Dentine 4M3	12g
VB4208450	Transparent Dentine 4M3	50g
VB4208512	Transparent Dentine 4R1.5	12g
VB4208550	Transparent Dentine 4R1.5	50g
VB4208612	Transparent Dentine 4R2.5	12g
VB4208650	Transparent Dentine 4R2.5	50g
VB4208712	Transparent Dentine 5M1	12g
VB4208750	Transparent Dentine 5M1	50g
VB4208812	Transparent Dentine 5M2	12g
VB4208850	Transparent Dentine 5M2	50g
VB4208912	Transparent Dentine 5M3	12g
VB4208950	Transparent Dentine 5M3	50g
VB4245112	Transparent Dentine A1	12g
VB4245150	Transparent Dentine A1	50g
VB4245212	Transparent Dentine A2	12g
VB4245250	Transparent Dentine A2	50g



Bonded Ceramic

VITAVM®9 DENTINE

Code	Description	Pack
VB4245312	Transparent Dentine A3	12g
VB4245350	Transparent Dentine A3	50g
VB4245412	Transparent Dentine A3.5	12g
VB4245450	Transparent Dentine A3.5	50g
VB4245512	Transparent Dentine A4	12g
VB4245550	Transparent Dentine A4	50g
VB4245612	Transparent Dentine B1	12g
VB4245650	Transparent Dentine B1	50g
VB4245712	Transparent Dentine B2	12g
VB4245750	Transparent Dentine B2	50g
VB4245812	Transparent Dentine B3	12g
VB4245850	Transparent Dentine B3	50g
VB4245912	Transparent Dentine B4	12g
VB4245950	Transparent Dentine B4	50g
VB4246012	Transparent Dentine C1	12g
VB4246050	Transparent Dentine C1	50g
VB4246112	Transparent Dentine C2	12g
VB4246150	Transparent Dentine C2	50g
VB4246212	Transparent Dentine C3	12g
VB4246250	Transparent Dentine C3	50g
VB4246312	Transparent Dentine C4	12g
VB4246350	Transparent Dentine C4	50g
VB4246412	Transparent Dentine D2	12g
VB4246450	Transparent Dentine D2	50g
VB4246512	Transparent Dentine D3	12g
VB4246550	Transparent Dentine D3	50g
VB4246612	Transparent Dentine D4	12g
VB4246650	Transparent Dentine D4	50g
VB4236112	Sun Dentine SD1	12g
VB4236212	Sun Dentine SD2	12g
VB4236312	Sun Dentine SD3	12g



Bonded Ceramic

VITAVM®9 EFFECT

Code	Description	Pack
VB4209112	Effect Enamel EE1	12g
VB4209212	Effect Enamel EE2	12g
VB4209312	Effect Enamel EE3	12g
VB4209412	Effect Enamel EE4	12g
VB4209512	Effect Enamel EE5	12g
VB4209612	Effect Enamel EE6	12g
VB4209712	Effect Enamel EE7	12g
VB4209812	Effect Enamel EE8	12g
VB4209912	Effect Enamel EE9	12g
VB4210012	Effect Enamel EE10	12g
VB4210112	Effect Enamel EE11	12g
VB4212112	Effect Chroma EC1	12g
VB4212212	Effect Chroma EC2	12g
VB4212312	Effect Chroma EC3	12g
VB4212412	Effect Chroma EC4	12g
VB4212512	Effect Chroma EC5	12g
VB4212612	Effect Chroma EC6	12g
VB4212712	Effect Chroma EC7	12g
VB4212812	Effect Chroma EC8	12g
VB4212912	Effect Chroma EC9	12g
VB4213012	Effect Chroma EC10	12g
VB4213112	Effect Chroma EC11	12g
VB4214112	Effect Liner EL1	12g
VB4214212	Effect Liner EL2	12g
VB4214312	Effect Liner EL3	12g
VB4214412	Effect Liner EL4	12g
VB4214512	Effect Liner EL5	12g
VB4214612	Effect Liner EL6	12g
VB4215112	Effect Pearl EP1	12g
VB4215212	Effect Pearl EP2	12g
VB4215312	Effect Pearl EP3	12g
VB4216112	Mamelon MM1	12g
VB4216212	Mamelon MM2	12g
VB4216312	Mamelon MM3	12g
VB4217112	Effect Opal EO1	12g
VB4217212	Effect Opal EO2	12g
VB4217312	Effect Opal EO3	12g
VB4217412	Effect Opal EO4	12g
VB4217512	Effect Opal EO5	12g



Bonded Ceramic

VITAVM®9 EFFECT

Code	Description	Pack
VB4218112	Window WIN	12g
VB4218150	Window WIN	50g
VB42181250	Window WIN	250g
VB4221012	Effect Bonder EB0	12g
VB4221112	Effect Bonder EB1	12g
VB4221212	Effect Bonder EB2	12g
VB4221312	Effect Bonder EB3	12g
VB4221412	Effect Bonder EB4	12g
VB4221512	Effect Bonder EB5	12g



VITAVM®9 ENAMEL & GINGIVA

Code	Description	Pack
VB4219112	Enamel Light ENL	12g
VB4219150	Enamel Light ENL	50g
VB42191250	Enamel Light ENL	250g
VB4219212	Enamel Dark END	12g
VB4219250	Enamel Dark END	50g
VB42192250	Enamel Dark END	250g
VB4223112	Gingiva G1	12g
VB4223212	Gingiva G2	12g
VB4223312	Gingiva G3	12g
VB4223412	Gingiva G4	12g
VB4223512	Gingiva G5	12g



VITAVM®9 MARGIN & NEUTRAL

Code	Description	Pack
VB4226112	Margin M1	12g
VB4226412	Margin M4	12g
VB4226512	Margin M5	12g
VB4226712	Margin M7	12g
VB4226812	Margin M8	12g
VB4226912	Margin M9	12g
VB4220112	Neutral NT	12g
VB4220150	Neutral NT	50g
VB42201250	Neutral NT	250g



Bonded Ceramic

VITAVM®9 KITS

VITAVM®9 BASIC KIT

VITAVM®9 BASIC KIT VITA SYSTEM 3D-MASTER® kit

contains: 26 x 12g VITAVM®9 BASE DENTINE 1M1-1M2, 2L1.5-2L2.5, 2M-2M3, 2R1.5-2R2.5, 3L1.5-3L2.5, 3M1-3M3, 3R1.5-3R2.5, 4L1.5-4L2.5, 4M1-4M3, 4R1.5-4R2.5 & 5M1-5M3, 2 x 12g VITAVM®9 ENAMEL ENL & END, 12g VITAVM®9 NEUTRAL NT, 12g VITAVM®9 WINDOW WIN, 3 x 12g VITAVM®9 CORRECTIVE COR1-COR3, 3 x 12g VITAVM®9 CHROMA PLUS CP2-CP4, 3 x 12g VITAVM®9 SUN DENTINE SD1-SD3, 50ml VITA MODELLING FLUID RS, VITA Modisol®, 2 x fibrous pad firing support, firing base G (pack of 2 trays and 20 pins), shade indicator for VITAVM®9 3D-MASTER, VITA Toothguide 3D-MASTER® with BLEACHED SHADE GUIDE

Code: VBV9BK12V3



VITAVM®9 BASIC KIT VITA classical A1-D4® kit contains: 16 x 12g VITAVM®9 BASE DENTINE A1-D4, 5 x 12g VITAVM®9 CHROMA PLUS CP1-CP5, 2 x 12g VITAVM®9 ENAMEL ENL & END, 12g VITAVM®9 NEUTRAL NT, 12g VITAVM®9 WINDOW WIN, 3 x 12g VITAVM®9 CORRECTIVE COR1-COR3, 3 x 12g VITAVM®9 SUN DENTINE SD1-SD3, 50ml VITA MODELLING FLUID RS, VITA Modisol®, 2 x fibrous pad firing support, firing base G (pack of 2 trays and 20 pins), shade indicator for VITAVM®9 classical, VITA classical A1-D4® shade guide

Code: VBV9BK12CV2



VITAVM®9 BASIC KIT SMALL

VITAVM®9 BASIC KIT SMALL VITA SYSTEM 3D-MASTER® kit

contains: 15 x 12g VITAVM®9 BASE DENTINE 1M1-4M3, 2 x 12g VITAVM®9 ENAMEL ENL & END, 12g VITAVM®9 NEUTRAL NT, 12g VITAVM®9 WINDOW WIN, 12g VITAVM®9 CORRECTIVE COR1, 3 x 12g VITAVM®9 CHROMA PLUS CP2-CP4, 3 x 12g VITAVM®9 SUN DENTINE SD1-SD3, 50ml VITA MODELLING FLUID RS, VITA Modisol®, 2 x fibrous pad firing support, firing base G (pack of 2 trays and 20 pins), shade indicator for VITAVM®9 3D-MASTER, VITA Toothguide 3D-MASTER® with BLEACHED SHADE GUIDE

Code: VBV9BKS12V3



Bonded Ceramic

VITAVM®9 BASIC KIT SMALL VITA classical A1-D4® kit

contains: 6 x 12g VITAVM®9 BASE DENTINE A1-A3.5, B3 & D3, 5 x 12g VITAVM®9 CHROMA PLUS CP1-CP5, 2 x 12g VITAVM®9 ENAMEL ENL & END, 12g VITAVM®9 NEUTRAL NT, 12g VITAVM®9 WINDOW WIN, 12g VITAVM®9 CORRECTIVE COR1, 3 x 12g VITAVM®9 SUN DENTINE SD1-SD3, 50 ml VITA MODELLING FLUID RS, VITA Modisol®, 2 x fibrous pad firing support, firing base G (pack of 2 trays and 20 pins), shade indicator for VITAVM®9 classical, VITA classical A1-D4® shade guide

Code: VBV9BKS12CV2



VITAVM®9 BUILD UP KIT

VITAVM®9 BUILD UP KIT VITA SYSTEM 3D-MASTER® kit

contains: 26 x 12g VITAVM®9 TRANSPARENT DENTINE 1M1-1M2, 2L1.5-2L2.5, 2M1-2M3, 2R1.5-2R2.5, 3L1.5-3L2.5, 3M1-3M3, 3R1.5-3R2.5, 4L1.5-4L2.5, 4M1-4M3, 4R1.5-4R2.5 & 5M1-5M3, 50ml VITA MODELLING FLUID RS

Code: VBV9BUK12V1



VITAVM®9 BUILD UP KIT VITA classical A1-D4® kit contains: 16 x 12g VITAVM®9 TRANSPARENT DENTINE A1-D4, 50ml VITA MODELLING FLUID RS

Code: VBV9BUK12CV1

VITAVM®9 BUILD UP KIT SMALL VITA

VITAVM®9 BUILD UP KIT SMALL VITA SYSTEM 3D-MASTER® kit

kit contains: 15 x 12g VITAVM®9 TRANSPARENT DENTINE 1M1-4M3, 50ml VITA MODELLING FLUID RS

Code: VBV9BUKS12V1



VITAVM®9 BUILD UP KIT SMALL VITA classical A1-D4® kit contains: 6 x 12g VITAVM®9 TRANSPARENT DENTINE A1-A3.5, B3 & D3, 50ml VITA MODELLING FLUID RS

Code: VBV9BUKS12CV1

Bonded Ceramic

VITAVM®9 BLEACHED COLOUR KIT VITA SYSTEM 3D-MASTER®

Kit contains: 3 x 12g VITAVM®9 BASE DENTINE 0M1-0M3, 3 x 12g VITAVM®9 TRANSPARENT DENTINE 0M1-0M3, 12g VITAVM®9 ENAMEL ENL, 12g VITAVM®9 NEUTRAL NT, 12g VITAVM®9 WINDOW WIN, 50ml VITA MODELLING FLUID RS, VITA BLEACHED SHADE GUIDE (Shade Group 0)

Code: VBV9BLKV2



VITAVM®9 ONE COLOR KIT

VITAVM®9 ONE COLOR KIT 2M2 Kit contains: 12g VITAVM®9 CHROMA PLUS CP2, 12g VITAVM®9 BASE DENTINE 2M2, 12g VITAVM®9 ENAMEL ENL, 12g VITAVM®9 WINDOW WIN, 5g VITA AKZENT Plus GLAZE POWDER, 50ml VITA MODELLING FLUID RS, 20ml VITA AKZENT Plus POWDER FLUID

Code: VBV9OCK2M2V5



VITAVM®9 ONE COLOR KIT A2 Kit contains: 12g VITAVM®9 CHROMA PLUS CP2, 12g VITAVM®9 BASE DENTINE A2, 12g VITAVM®9 ENAMEL ENL, 12g VITAVM®9 WINDOW WIN, 5g VITA AKZENT Plus GLAZE POWDER, 50ml VITA MODELLING FLUID RS, 20ml VITA AKZENT Plus POWDER FLUID

Code: VBV9OCKA2V4

VITAVM®9 PROFESSIONAL KIT

Kit contains: 11 x 12 g VITAVM®9 EFFECT CHROMA EC1-EC11, 3 x 12 g VITAVM®9 MAMELON MM1-MM3, 3 x 12 g VITAVM®9 EFFECT PEARL EP1-EP3, 5 x 12 g VITAVM®9 EFFECT OPAL EO1-EO5, 11 x 12 g VITAVM®9 EFFECT ENAMEL EE1-EE11, 6 x 12 g VITAVM®9 EFFECT LINER EL1-EL6, shade guide for VITAVM® EFFECT CHROMA, shade guide for VITAVM® EFFECT LINER/EFFECT OPAL/MAMELON, shade guide for VITAVM® EFFECT ENAMEL/EFFECT PEARL

Code: VBV9PKV2



Bonded Ceramic

VITAVM®9 PROFESSIONAL KIT SMALL

Kit contains: 5 x 12g VITAVM®9 EFFECT CHROMA EC1, EC4, EC6 & EC8-EC9, 12g VITAVM®9 MAMELON MM2, 12g VITAVM®9 EFFECT PEARL EP1, 12g VITAVM®9 EFFECT OPAL EO2, 7 x 12g VITAVM®9 EFFECT ENAMEL EE1, EE3 & EE7-EE11, shade guide for VITAVM®9 PROFESSIONAL Kit SMALL

Code: VBV9PKS



VITAVM®9 GINGIVA KIT

Kit contains: 5 x 12g VITAVM®9 GINGIVA G1-G5, shade guide for VITAVM® GINGIVA/MARGIN

Code: VBV9GKV1



VITAVM®9 AESTHETIC KIT FOR VITABLOCS

Kit contains: VITABLOCS® Mark II Sample Set VITA SYSTEM 3D-MASTER®, 12g VITAVM®9 WINDOW WIN, 12g VITAVM®9 NEUTRAL NT, 2 x 12g VITAVM®9 ENAMEL ENL & END, 12g VITAVM®9 EFFECT PEARL EP1, 2 x 12g VITAVM®9 EFFECT ENAMEL EE1 & EE10, 12g VITAVM®9 CORRECTIVE COR1, 4g VITA AKZENT Plus FINISHING AGENT PASTE, 4g VITA AKZENT Plus GLAZE PASTE, 12g VITAVM®9 EFFECT OPAL EO2, 2 x 12g VITAVM®9 EFFECT CHROMA EC1 & EC4, 12g VITAVM®9 MAMELON MM2, 50ml VITA MODELLING FLUID RS, 15ml VITA AKZENT Plus PASTE FLUID, firing tray W for crowns and bridges, 2 x Platinum pins (1 x anterior & 1 x posterior pin)

Code: VBV9EKCv2



VITAVM®9 MARGIN KIT

Kit contains: 6 x 12g VITAVM®9 MARGIN M1, M4-M5 & M7-M9, shade guide for VITAVM® GINGIVA/MARGIN

Code: VBV9MKV1



Bonded Ceramic

VITAVM®9 ADD-ON KIT

Kit contains: 8 x 12g VITAVM®9 ADD-ON ADD1-ADD8, 5g VITA AKZENT Plus GLAZE LT POWDER, 50ml VITA VM MODELLING LIQUID, 20ml VITA AKZENT Plus POWDER FLUID, 2 x fibrous pad firing support, shade guide for VITAVM®9 ADD-ON. No.3 a & e brush

Code: VBV9AOKV1



VITAVM®9 CLASSICAL ADD-ON COLOUR KIT

Kit contains: 16 x 12g VITAVM®9 BASE DENTINE A1-D4, 16 x 12g VITAVM®9 TRANSPARENT DENTINE A1-D4, 2 x 12g VITAVM®9 CHROMA PLUS CP1 & CP5, 50ml VITA MODELLING FLUID RS, shade indicator for VITAVM®9 classical, VITA classical A1-D4® shade guide

Code: VBV9CCK12V2



VITA VMK MASTER®

A master in terms of reliability, suitability for everyday use and aesthetics, VITA VMK Master® is a natural feldspar veneering ceramic for conventional bonding alloys that have been cast, milled or sintered. Precise and reliable to process, this material offers improved modelling properties, simple handling and minimum shrinkage behaviour. Achieve highly aesthetic restorations thanks to conventional, established dentine-incisal layering.



VITA VMK MASTER® CERVICAL



Code	Description	Pack
VB4820112	Cervical CE1	12g
VB4820212	Cervical CE2	12g
VB4820312	Cervical CE3	12g

VITA VMK MASTER® CORRECTIVE



Code	Description	Pack
VB4822112	Corrective COR1	12g
VB4822212	Corrective COR2	12g

Bonded Ceramic

VITA VMK MASTER® DENTINE

Code	Description	Pack
VB4845112	Dentine A1	12g
VB4845150	Dentine A1	50g
VB48451250	Dentine A1	250g
VB4845212	Dentine A2	12g
VB4845250	Dentine A2	50g
VB48452250	Dentine A2	250g
VB4845312	Dentine A3	12g
VB4845350	Dentine A3	50g
VB48453250	Dentine A3	250g
VB4845412	Dentine A3.5	12g
VB4845450	Dentine A3.5	50g
VB48454250	Dentine A3.5	250g
VB4845512	Dentine A4	12g
VB4845550	Dentine A4	50g
VB4845612	Dentine B1	12g
VB4845650	Dentine B1	50g
VB48456250	Dentine B1	250g
VB4845712	Dentine B2	12g
VB4845750	Dentine B2	50g
VB48457250	Dentine B2	250g
VB4845812	Dentine B3	12g
VB4845850	Dentine B3	50g
VB4845912	Dentine B4	12g
VB4845950	Dentine B4	50g
VB4846012	Dentine C1	12g
VB4846050	Dentine C1	50g
VB4846112	Dentine C2	12g
VB4846150	Dentine C2	50g
VB4846212	Dentine C3	12g
VB4846250	Dentine C3	50g
VB4846312	Dentine C4	12g
VB4846350	Dentine C4	50g
VB4846412	Dentine D2	12g
VB4846450	Dentine D2	50g
VB4846512	Dentine D3	12g
VB4846550	Dentine D3	50g
VB4846612	Dentine D4	12g
VB4846650	Dentine D4	50g
VB4803112	Dentine 0M1	12g



Bonded Ceramic

VITA VMK MASTER® DENTINE

Code	Description	Pack
VB4803150	Dentine 0M1	50g
VB4803212	Dentine 0M2	12g
VB4803250	Dentine 0M2	50g
VB4803312	Dentine 0M3	12g
VB4803350	Dentine 0M3	50g
VB4803412	Dentine 1M1	12g
VB4803450	Dentine 1M1	50g
VB48034250	Dentine 1M1	250g
VB4803512	Dentine 1M2	12g
VB4803550	Dentine 1M2	50g
VB48035250	Dentine 1M2	250g
VB4803612	Dentine 2L1.5	12g
VB4803650	Dentine 2L1.5	50g
VB48036250	Dentine 2L1.5	250g
VB4803712	Dentine 2L2.5	12g
VB4803750	Dentine 2L2.5	50g
VB4803812	Dentine 2M1	12g
VB4803850	Dentine 2M1	50g
VB48038250	Dentine 2M1	250g
VB4803912	Dentine 2M2	12g
VB4803950	Dentine 2M2	50g
VB48039250	Dentine 2M2	250g
VB4804012	Dentine 2M3	12g
VB4804050	Dentine 2M3	50g
VB4804112	Dentine 2R1.5	12g
VB4804150	Dentine 2R1.5	50g
VB4804212	Dentine 2R2.5	12g
VB4804250	Dentine 2R2.5	50g
VB48042250	Dentine 2R2.5	250g
VB4804312	Dentine 3L1.5	12g
VB4804350	Dentine 3L1.5	50g
VB4804412	Dentine 3L2.5	12g
VB4804450	Dentine 3L2.5	50g
VB4804512	Dentine 3M1	12g
VB4804550	Dentine 3M1	50g
VB4804612	Dentine 3M2	12g
VB4804650	Dentine 3M2	50g
VB48046250	Dentine 3M2	250g
VB4804712	Dentine 3M3	12g



Bonded Ceramic

VITA VMK MASTER® DENTINE

Code	Description	Pack
VB4804750	Dentine 3M3	50g
VB4804812	Dentine 3R1.5	12g
VB4804850	Dentine 3R1.5	50g
VB4804912	Dentine 3R2.5	12g
VB4804950	Dentine 3R2.5	50g
VB4805012	Dentine 4L1.5	12g
VB4805050	Dentine 4L1.5	50g
VB4805112	Dentine 4L2.5	12g
VB4805150	Dentine 4L2.5	50g
VB4805212	Dentine 4M1	12g
VB4805250	Dentine 4M1	50g
VB4805312	Dentine 4M2	12g
VB4805350	Dentine 4M2	50g
VB4805412	Dentine 4M3	12g
VB4805450	Dentine 4M3	50g
VB4805512	Dentine 4R1.5	12g
VB4805550	Dentine 4R1.5	50g
VB4805612	Dentine 4R2.5	12g
VB4805650	Dentine 4R2.5	50g
VB4805712	Dentine 5M1	12g
VB4805750	Dentine 5M1	50g
VB4805812	Dentine 5M2	12g
VB4805850	Dentine 5M2	50g
VB4805912	Dentine 5M3	12g
VB4805950	Dentine 5M3	50g



VITA VMK MASTER® EFFECT

Code	Description	Pack
VB4818112	Window WIN	12g
VB4818150	Window WIN	50g
VB48181250	Window WIN	250g



Bonded Ceramic

VITA VMK MASTER® ENAMEL

Code	Description	Pack
VB4819112	Enamel EN1	12g
VB4819150	Enamel EN1	50g
VB48191250	Enamel EN1	250g
VB4819212	Enamel EN2	12g
VB4819250	Enamel EN2	50g
VB48192250	Enamel EN2	250g
VB4819312	Enamel EN3	12g
VB4819350	Enamel EN3	50g
VB48193250	Enamel EN3	250g



VITA VMK MASTER® GINGIVA

Code	Description	Pack
VB4823112	Gingiva G1	12g
VB4823212	Gingiva G2	12g
VB4823312	Gingiva G3	12g
VB4823412	Gingiva G4	12g
VB4823512	Gingiva G5	12g
VB4827112	Gingiva Opaque GOL	12g
VB4827312	Gingiva Opaque GOD	12g
VB483715	Gingiva Opaque Paste GOL	5g
VB483735	Gingiva Opaque Paste GOD	5g



VITA VMK MASTER® LUMINARY

Code	Description	Pack
VB4814112	Luminary LM1	12g
VB4814212	Luminary LM2	12g
VB4814312	Luminary LM3	12g
VB4814412	Luminary LM4	12g
VB4814512	Luminary LM5	12g
VB4814612	Luminary LM6	12g



Bonded Ceramic

VITA VMK MASTER® MARGIN

Code	Description	Pack
VB4826012	Margin MN	12g
VB4826112	Margin M1	12g
VB4826212	Margin M2	12g
VB4826312	Margin M3	12g
VB4826412	Margin M4	12g
VB4826512	Margin M5	12g



VITA VMK MASTER® MODIFIER

Code	Description	Pack
VB4812112	Dentine Modifier DM1	12g
VB4812212	Dentine Modifier DM2	12g
VB4812312	Dentine Modifier DM3	12g
VB4812412	Dentine Modifier DM4	12g
VB4812512	Dentine Modifier DM5	12g
VB4812612	Dentine Modifier DM6	12g
VB4812712	Dentine Modifier DM7	12g
VB4812812	Dentine Modifier DM8	12g



VITA VMK MASTER® NECK

Code	Description	Pack
VB4824112	Neck N1	12g
VB4824212	Neck N2	12g
VB4824312	Neck N3	12g
VB4824412	Neck N4	12g
VB4824512	Neck N5	12g



VITA VMK MASTER® OPAQUE

Code	Description	Pack
VB4840112	Opaque A1	12g
VB4840150	Opaque A1	50g
VB48401250	Opaque A1	250g
VB4840212	Opaque A2	12g
VB4840250	Opaque A2	50g
VB48402250	Opaque A2	250g
VB4840312	Opaque A3	12g



Bonded Ceramic

VITA VMK MASTER® OPAQUE

Code	Description	Pack
VB4840350	Opaque A3	50g
VB48403250	Opaque A3	250g
VB4840412	Opaque A3.5	12g
VB4840450	Opaque A3.5	50g
VB4840512	Opaque A4	12g
VB4840550	Opaque A4	50g
VB4840612	Opaque B1	12g
VB4840650	Opaque B1	50g
VB4840712	Opaque B2	12g
VB4840750	Opaque B2	50g
VB4840812	Opaque B3	12g
VB4840850	Opaque B3	50g
VB4840912	Opaque B4	12g
VB4840950	Opaque B4	50g
VB4841012	Opaque C1	12g
VB4841050	Opaque C1	50g
VB4841112	Opaque C2	12g
VB4841150	Opaque C2	50g
VB4841212	Opaque C3	12g
VB4841250	Opaque C3	50g
VB4841312	Opaque C4	12g
VB4841350	Opaque C4	50g
VB4841412	Opaque D2	12g
VB4841450	Opaque D2	50g
VB4841512	Opaque D3	12g
VB4841550	Opaque D3	50g
VB4841612	Opaque D4	12g
VB4841650	Opaque D4	50g
VB4825012	Opaque OP0	12g
VB4825050	Opaque OP0	50g
VB4825112	Opaque OP1	12g
VB4825150	Opaque OP1	50g
VB48251250	Opaque OP1	250g
VB4825212	Opaque OP2	12g
VB4825250	Opaque OP2	50g
VB48252250	Opaque OP2	250g
VB4825312	Opaque OP3	12g
VB4825350	Opaque OP3	50g
VB48253250	Opaque OP3	250g



Bonded Ceramic

VITA VMK MASTER® OPAQUE

Code	Description	Pack
VB4825412	Opaque OP4	12g
VB4825450	Opaque OP4	50g
VB4825512	Opaque OP5	12g
VB4825550	Opaque OP5	50g
VB483015	Opaque Paste A1	5g
VB483025	Opaque Paste A2	5g
VB483035	Opaque Paste A3	5g
VB483045	Opaque Paste A3.5	5g
VB483055	Opaque Paste A4	5g
VB483065	Opaque Paste B1	5g
VB483075	Opaque Paste B2	5g
VB483085	Opaque Paste B3	5g
VB483095	Opaque Paste B4	5g
VB483105	Opaque Paste C1	5g
VB483115	Opaque Paste C2	5g
VB483125	Opaque Paste C3	5g
VB483135	Opaque Paste C4	5g
VB483145	Opaque Paste D2	5g
VB483155	Opaque Paste D3	5g
VB483165	Opaque Paste D4	5g
VB483505	Opaque Paste OP0	5g
VB483515	Opaque Paste OP1	5g
VB483525	Opaque Paste OP2	5g
VB483535	Opaque Paste OP3	5g
VB483545	Opaque Paste OP4	5g
VB483555	Opaque Paste OP5	5g
VB4825912	Wash Opaque WO	12g
VB4825950	Wash Opaque WO	50g
VB483597	Wash Opaque Paste WO	7g



Bonded Ceramic

VITA VMK MASTER® OPAQUE DENTINE

Code	Description	Pack
VB4843112	Opaque Dentine A1	12g
VB4843150	Opaque Dentine A1	50g
VB4843212	Opaque Dentine A2	12g
VB4843250	Opaque Dentine A2	50g
VB4843312	Opaque Dentine A3	12g
VB4843350	Opaque Dentine A3	50g
VB4843412	Opaque Dentine A3.5	12g
VB4843450	Opaque Dentine A3.5	50g
VB4843512	Opaque Dentine A4	12g
VB4843550	Opaque Dentine A4	50g
VB4843612	Opaque Dentine B1	12g
VB4843650	Opaque Dentine B1	50g
VB4843712	Opaque Dentine B2	12g
VB4843750	Opaque Dentine B2	50g
VB4843812	Opaque Dentine B3	12g
VB4843850	Opaque Dentine B3	50g
VB4843912	Opaque Dentine B4	12g
VB4843950	Opaque Dentine B4	50g
VB4844012	Opaque Dentine C1	12g
VB4844050	Opaque Dentine C1	50g
VB4844112	Opaque Dentine C2	12g
VB4844150	Opaque Dentine C2	50g
VB4844212	Opaque Dentine C3	12g
VB4844250	Opaque Dentine C3	50g
VB4844312	Opaque Dentine C4	12g
VB4844350	Opaque Dentine C4	50g
VB4844412	Opaque Dentine D2	12g
VB4844450	Opaque Dentine D2	50g
VB4844512	Opaque Dentine D3	12g
VB4844550	Opaque Dentine D3	50g
VB4844612	Opaque Dentine D4	12g
VB4844650	Opaque Dentine D4	50g
VB4806112	Opaque Dentine 0M1	12g
VB4806150	Opaque Dentine 0M1	50g
VB4806212	Opaque Dentine 0M2	12g
VB4806250	Opaque Dentine 0M2	50g
VB4806312	Opaque Dentine 0M3	12g
VB4806350	Opaque Dentine 0M3	50g
VB4806412	Opaque Dentine 1M1	12g



Bonded Ceramic

VITA VMK MASTER® OPAQUE DENTINE

Code	Description	Pack
VB4806450	Opaque Dentine 1M1	50g
VB4806512	Opaque Dentine 1M2	12g
VB4806550	Opaque Dentine 1M2	50g
VB4806612	Opaque Dentine 2L1.5	12g
VB4806650	Opaque Dentine 2L1.5	50g
VB4806712	Opaque Dentine 2L2.5	12g
VB4806750	Opaque Dentine 2L2.5	50g
VB4806812	Opaque Dentine 2M1	12g
VB4806850	Opaque Dentine 2M1	50g
VB4806912	Opaque Dentine 2M2	12g
VB4806950	Opaque Dentine 2M2	50g
VB4807012	Opaque Dentine 2M3	12g
VB4807050	Opaque Dentine 2M3	50g
VB4807112	Opaque Dentine 2R1.5	12g
VB4807150	Opaque Dentine 2R1.5	50g
VB4807212	Opaque Dentine 2R2.5	12g
VB4807250	Opaque Dentine 2R2.5	50g
VB4807312	Opaque Dentine 3L1.5	12g
VB4807350	Opaque Dentine 3L1.5	50g
VB4807412	Opaque Dentine 3L2.5	12g
VB4807450	Opaque Dentine 3L2.5	50g
VB4807512	Opaque Dentine 3M1	12g
VB4807550	Opaque Dentine 3M1	50g
VB4807612	Opaque Dentine 3M2	12g
VB4807650	Opaque Dentine 3M2	50g
VB4807712	Opaque Dentine 3M3	12g
VB4807750	Opaque Dentine 3M3	50g
VB4807812	Opaque Dentine 3R1.5	12g
VB4807850	Opaque Dentine 3R1.5	50g
VB4807912	Opaque Dentine 3R2.5	12g
VB4807950	Opaque Dentine 3R2.5	50g
VB4808012	Opaque Dentine 4L1.5	12g
VB4808050	Opaque Dentine 4L1.5	50g
VB4808112	Opaque Dentine 4L2.5	12g
VB4808150	Opaque Dentine 4L2.5	50g
VB4808212	Opaque Dentine 4M1	12g
VB4808250	Opaque Dentine 4M1	50g
VB4808312	Opaque Dentine 4M2	12g
VB4808350	Opaque Dentine 4M2	50g



Bonded Ceramic

VITA VMK MASTER® OPAQUE DENTINE

Code	Description	Pack
VB4808412	Opaque Dentine 4M3	12g
VB4808450	Opaque Dentine 4M3	50g
VB4808512	Opaque Dentine 4R1.5	12g
VB4808550	Opaque Dentine 4R1.5	50g
VB4808612	Opaque Dentine 4R2.5	12g
VB4808650	Opaque Dentine 4R2.5	50g
VB4808712	Opaque Dentine 5M1	12g
VB4808750	Opaque Dentine 5M1	50g
VB4808812	Opaque Dentine 5M2	12g
VB4808850	Opaque Dentine 5M2	50g
VB4808912	Opaque Dentine 5M3	12g
VB4808950	Opaque Dentine 5M3	50g



VITA VMK MASTER® TRANSLUCENT

Code	Description	Pack
VB4817112	Opal Translucent OT1	12g
VB4815112	Pearl Translucent PLT1	12g
VB4809112	Translucent T1	12g
VB4809212	Translucent T2	12g
VB4809312	Translucent T3	12g
VB4809412	Translucent T4	12g
VB4809450	Translucent T4	50g
VB48094250	Translucent T4	250g
VB4809512	Translucent T5	12g
VB4809612	Translucent T6	12g
VB4809712	Translucent T7	12g
VB4809812	Translucent T8	12g



Bonded Ceramic

VITA VMK MASTER® KITS

VITA VMK MASTER® ONE COLOR KIT

VITA VMK Master® ONE COLOR KIT 2M2 kit contains: 12g VITA VMK Master® OPAQUE OP2, 12g VITA VMK Master® OPAQUE DENTINE 2M2, 12g VITA VMK Master® DENTINE 2M2, 12g VITA VMK Master® ENAMEL EN1, 12g VITA VMK Master® TRANSLUCENT T4, 5g VITA AKZENT Plus GLAZE POWDER, 50ml VITA MODELLING FLUID RS, 50ml VITA OPAQUE FLUID, 20ml VITA AKZENT Plus POWDER FLUID

Code: VBVMKOC2M2V2

VITA VMK Master® ONE COLOR KIT A2 kit contains: 12g VITA VMK Master® OPAQUE A2, 12g VITA VMK Master® OPAQUE DENTINE A2, 12g VITA VMK Master® DENTINE A2, 12g VITA VMK Master® ENAMEL EN1, 12g VITA VMK Master® TRANSLUCENT T4, 5g VITA AKZENT Plus GLAZE POWDER, 50ml VITA MODELLING FLUID RS, 50ml VITA OPAQUE FLUID, 20ml VITA AKZENT Plus POWDER FLUID

Code: VBVMKOC2A2V2

VITA VMK MASTER® STANDARD SET POWDER

VITA VMK Master® STANDARD SET POWDER VITA SYSTEM 3D-MASTER® kit contains: 12g VITA VMK Master® WASH OPAQUE WO, 5 x 12g VITA VMK Master® OPAQUE OP1-OP5, 26 x 12g VITA VMK Master® DENTINE 1M1-1M2, 2L1.5-2L2.5, 2M1-2M3, 2R1.5-2R2.5, 3L1.5-3L2.5, 3M1-3M3, 3R1.5-3R2.5, 4L1.5-4L2.5, 4M1-4M3, 4R1.5-4R2.5 & 5M1-5M3, 26 x 12g VITA VMK Master® OPAQUE DENTINE 1M1-1M2, 2L1.5-2L2.5, 2M1-2M3, 2R1.5-2R2.5, 3L1.5-3L2.5, 3M1-3M3, 3R1.5-3R2.5, 4L1.5-4L2.5, 4M1-4M3, 4R1.5-4R2.5 & 5M1-5M3, 2 x 12g VITA VMK Master® ENAMEL EN1 & EN3, 12g VITA VMK Master® TRANSLUCENT T4, 12g VITA VMK Master® WINDOW WIN, 3 x 12g VITA VMK Master® CERVICAL CE1-CE3, 5 x 12g VITA VMK Master® NECK N1-N5, 2 x 12g VITA VMK Master® CORRECTIVE COR1-COR2, 50ml VITA MODELLING FLUID, 50ml VITA MODELLING FLUID RS, 50ml VITA OPAQUE FLUID, VITA Modisol®, crown stands A+B+C for molars (set of 6), firing base G (pack of 2 trays and 20 pins), shade indicator for VITA VMK Master® 3D-MASTER, VITA Linearguide 3D-MASTER®, shade guide for VITA VMK Master® STANDARD

Code: VBVMKSET3D



Bonded Ceramic

VITA VMK Master® STANDARD SET POWDER VITA classical

A1-D4® kit contains: 12g VITA VMK Master® WASH OPAQUE WO, 16 x 12g VITA VMK Master® OPAQUE A1-D4, 16 x 12g VITA VMK Master® OPAQUE DENTINE A1-D4, 16 x 12g VITA VMK Master® DENTINE A1-D4, 2 x 12g VITA VMK Master® ENAMEL EN1-EN2, 12g VITA VMK Master® TRANSLUCENT T4, 12g VITA VMK Master® WINDOW WIN, 3 x 12g VITA VMK Master® CERVICAL CE1-CE3, 5 x 12g VITA VMK Master® NECK N1-N5, 2 x 12g VITA VMK Master® CORRECTIVE COR1-COR2, 50ml VITA MODELLING FLUID, 50ml VITA MODELLING FLUID RS, 50ml VITA OPAQUE FLUID, VITA Modisol®, crown stands A+B+C for molars (set of 6), firing baseg (pack of 2 trays and 20 pins), shade indicator for VITA VMK Master® classical, VITA classical A1-D4® shade guide, shade guide for VITA VMK Master® STANDARD

Code: VBVMKSETC



VITA VMK MASTER® STANDARD SET PASTE

VITA VMK Master® STANDARD SET PASTE VITA SYSTEM 3D-

MASTER® kit contains: 7g VITA VMK Master® WASH OPAQUE PASTE WO, 5 x 5g VITA VMK Master® OPAQUE PASTE OP1-OP5, 26 x 12g VITA VMK Master® DENTINE 1M1-1M2, 2L1.5-2L2.5, 2M1-2M3, 2R1.5-2R2.5, 3L1.5-3L2.5, 3M1-3M3, 3R1.5-3R2.5, 4L1.5-4L2.5, 4M1-4M3, 4R1.5-4R2.5 & 5M1-5M3, 26 x 12g VITA VMK Master® OPAQUE DENTINE 1M1-1M2, 2L1.5-2L2.5, 2M1-2M3, 2R1.5-2R2.5, 3L1.5-3L2.5, 3M1-3M3, 3R1.5-3R2.5, 4L1.5-4L2.5, 4M1-4M3, 4R1.5-4R2.5 & 5M1-5M3, 2 x 12g VITA VMK Master® ENAMEL EN& EN3, 12g VITA VMK Master® TRANSLUCENT T4, 12g VITA VMK Master® WINDOW WIN, 3 x 12g VITA VMK Master® CERVICAL CE1-CE3, 5 x 12g VITA VMK Master® NECK N1-N5, 2 x 12g VITA VMK Master® CORRECTIVE COR1-COR2, 50ml VITA MODELLING FLUID, 50ml VITA MODELLING FLUID RS, 15ml VITA PASTE OPAQUE LIQUID, flat brush, mixing spatula, VITA Modisol®, crown stands A+B+C for molars (set of 6), firing base G (pack of 2 trays and 20 pins), shade indicator for VITA VMK Master® 3D-MASTER, VITA Linearguide 3D-MASTER®, shade guide for VITA VMK Master® STANDARD

Code: VBVMKSETP3D



Bonded Ceramic

VITA VMK Master® STANDARD SET PASTE VITA classical A1-

D4® kit contains: 7g VITA VMK Master® WASH OPAQUE PASTE WO, 16 x 5g VITA VMK Master® OPAQUE PASTE A1-D4, 16 x 12g VITA VMK Master® OPAQUE DENTINE A1-D4, 16 x 12g VITA VMK Master® DENTINE A1-D4, 2 x 12g VITA VMK Master® ENAMEL EN1-EN2, 12g VITA VMK Master® TRANSLUCENT T4, 12g VITA VMK Master® WINDOW WIN, 3 x 12g VITA VMK Master® CERVICAL CE1-CE3, 5 x 12g VITA VMK Master® NECK N1-N5, 2 x 12g VITA VMK Master® CORRECTIVE COR1-COR2, 50ml VITA MODELLING FLUID, 50ml VITA MODELLING FLUID RS, 15ml VITA PASTE OPAQUE LIQUID, flat brush, mixing spatula, VITA Modisol®, crown stands A+B+C for molars (set of 6), firing base G (pack of 2 trays and 20 pins), shade indicator for VITA VMK Master® classical, VITA classical A1-D4® shade guide, shade guide for VITA VMK Master® STANDARD

Code: VBVMKSETPC



VITA VMK MASTER® STARTER SET POWDER

VITA VMK Master® STARTER SET POWDER VITA SYSTEM 3D-

MASTER® kit contains: 2 x 12g VITA VMK Master® OPAQUE OP2-OP3, 2 x 12g VITA VMK Master® DENTINE 2M2 & 3M2, 2 x 12g VITA VMK Master® OPAQUE DENTINE 2M2 & 3M2, 12g VITA VMK Master® ENAMEL EN1, 12g VITA VMK Master® TRANSLUCENT T4, 50ml VITA MODELLING FLUID RS, 50ml VITA OPAQUE FLUID, VITA shade indicator stick 2M2, VITA shade indicator stick 3M2

Code: VBVMKSS3D



VITA VMK Master® STARTER SET POWDER VITA classical A1-

D4® kit contains: 2 x 12g VITA VMK Master® OPAQUE A2-A3, 2 x 12g VITA VMK Master® OPAQUE DENTINE A2-A3, 2 x 12g VITA VMK Master® DENTINE A2-A3, 12g VITA VMK Master® ENAMEL EN1, 12g VITA VMK Master® TRANSLUCENT T4, 50ml VITA MODELLING FLUID RS, 50ml VITA OPAQUE FLUID, VITA shade indicator stick A2, VITA shade indicator stick A3

Code: VBVMKSSC



Bonded Ceramic

VITA VMK MASTER® STARTER SET PASTE

VITA VMK Master® STARTER SET PASTE VITA SYSTEM 3D-MASTER® kit contains: 2 x 5g VITA VMK Master® OPAQUE PASTE OP2-OP3, 2 x 12g VITA VMK Master® DENTINE 2M2 & 3M2, 2 x 12g VITA VMK Master® OPAQUE DENTINE 2M2 & 3M2, 12g VITA VMK Master® ENAMEL EN1, 12g VITA VMK Master® TRANSLUCENT T4, 50ml VITA MODELLING FLUID RS, 15ml VITA PASTE OPAQUE LIQUID, VITA shade indicator stick 2M2, VITA shade indicator stick 3M2, flat brush, mixing spatula

Code: VBVMKSSP3D

VITA VMK Master® STARTER SET PASTE VITA classical A1-D4®

kit contains: 2 x 5g VITA VMK Master® OPAQUE PASTE A2-A3, 2 x 12g VITA VMK Master® OPAQUE DENTINE A2-A3, 2 x 12g VITA VMK Master® DENTINE A2-A3, 12g VITA VMK Master® ENAMEL EN1, 12g VITA VMK Master® TRANSLUCENT T4, 50ml VITA MODELLING FLUID RS, 15ml VITA PASTE OPAQUE LIQUID, VITA shade indicator stick A2, VITA shade indicator stick A3, mixing spatula, flat brush

Code: VBVMKSSCP

VITA VMK MASTER® 10-COLOR-SET POWDER VITA SYSTEM 3D-MASTER®

Kit contains: 12g VITA VMK Master® WASH OPAQUE WO, 4 x 12g VITA VMK Master® OPAQUE OP1-OP4, 10 x 12g VITA VMK Master® OPAQUE DENTINE 1M2, 2L1.5, 2M-2M2, 2R2.5, 3L1.5, 3M1-3M3 & 4M2, 10 x 12g VITA VMK Master® DENTINE 1M2, 2L1.5, 2M1-2M2, 2R2.5, 3L1.5, 3M1-3M3 & 4M2, 2 x 12g VITA VMK Master® ENAMEL EN& EN3, 12g VITA VMK Master® TRANSLUCENT T4, 12g VITA VMK Master® WINDOW WIN, 3 x 12g VITA VMK Master® CERVICAL CE1-CE3, 5 x 12g VITA VMK Master® NECK N1-N5, 2 x 12g VITA VMK Master® CORRECTIVE COR1-COR2, 50ml VITA MODELLING FLUID, 50ml VITA MODELLING FLUID RS, 50ml VITA OPAQUE FLUID, VITA Modisol®, firing base G (pack of 2 trays and 20 pins), shade indicator for VITA VMK Master® 3D-MASTER, VITA Linearguide 3D-MASTER®, shade guide for VITA VMK Master® STANDARD

Code: VBVMK10S3D



Bonded Ceramic

VITA VMK MASTER® 10-COLOR-SET PASTE VITA SYSTEM 3D-MASTER®

Kit contains: 10 x 12g VITA VMK Master® DENTINE 1M2, 2L1.5, 2M1-2M2, 2R2.5, 3L1.5, 3M1-3M3 & 4M2, 2 x 12g VITA VMK Master® ENAMEL EN& EN3, 12g VITA VMK Master® TRANSLUCENT T4, 12g VITA VMK Master® WINDOW WIN, 3 x 12g VITA VMK Master® CERVICAL CE1-CE3, 5 x 12g VITA VMK Master® NECK N1-N5, 2 x 12g VITA VMK Master® CORRECTIVE COR1-COR2, 50ml VITA MODELLING FLUID, 50ml VITA MODELLING FLUID RS, 15ml VITA PASTE OPAQUE LIQUID, flat brush, mixing spatula, VITA Modisol®, firing base G (pack of 2 trays and 20 pins), shade indicator for VITA VMK Master® 3D-MASTER, VITA Linearguide 3D-MASTER®, shade guide for VITA VMK Master® STANDARD

Code: VBVMK10SP3D

VITA VMK MASTER® BLEACHED COLOR SET POWDER VITA SYSTEM 3D-MASTER®

Kit contains: 12g VITA VMK Master® OPAQUE OP0, 3 x 12g VITA VMK Master® DENTINE 0M1-0M3, 3 x 12g VITA VMK Master® OPAQUE DENTINE 0M1-0M3, 12g VITA VMK Master® ENAMEL EN1, 12g VITA VMK Master® TRANSLUCENT T4, 50ml VITA MODELLING FLUID RS, 50ml VITA OPAQUE FLUID, VITA BLEACHED SHADE GUIDE (Shade Group 0)

Code: VBVMKBSC

VITA VMK MASTER® BLEACHED COLOUR SET PASTE VITA SYSTEM 3D-MASTER®

Kit contains: 5g VITA VMK Master® OPAQUE PASTE OP0, 3 x 12g VITA VMK Master® DENTINE 0M1-0M3, 3 x 12g VITA VMK Master® OPAQUE DENTINE 0M1-0M3, 12g VITA VMK Master® ENAMEL EN1, 12g VITA VMK Master® TRANSLUCENT T4, 50ml VITA MODELLING FLUID RS, 15ml VITA PASTE OPAQUE LIQUID, VITA BLEACHED SHADE GUIDE (Shade Group 0), mixing spatula, flat brush

Code: VBVMKBCSP



Bonded Ceramic

VITA VMK MASTER® ADDITIONAL SET

Kit contains: 8 x 12g VITA VMK Master® TRANSLUCENT T1-T8, 8 x 12g VITA VMK Master® DENTINE MODIFIER DM1-DM8, 6 x 12g VITA VMK Master® LUMINARY LM1-LM6, 6 x 12g VITA VMK Master® MARGIN MN & M1-M5, 12g VITA VMK Master® PEARL TRANSLUCENT PLT1, 12g VITA VMK Master® OPAL TRANSLUCENT OT1, 50ml VITA MODELLING FLUID, shade guide for VITA VMK Master® TRANSLUCENT, shade guide for VITA VMK Master® MARGIN/GINGIVA, shade guide for VITA VMK Master® DENTINE MODIFIER/LUMINARY

Code: VBVMKAS

VITA VMK MASTER® GINGIVA SET POWDER

Kit contains: 5 x 12g VITA VMK Master® GINGIVA G1-G5, 2 x 12g VITA VMK Master® GINGIVA OPAQUE GOL & GOD, shade guide for VITA VMK Master® MARGIN/GINGIVA

Code: VBVMKGS

VITA VMK MASTER® GINGIVA SET PASTE

Kit contains: 5 x 12g VITA VMK Master GINGIVA G1-G5, 2 x 5g VITA VMK Master GINGIVA OPAQUE PASTE GOL & GOD, shade guide for VITA VMK Master® MARGIN/GINGIVA

Code: VBVMKGS



Pressable Ceramic

CELTRA® PRESS

Celtra® is the new generation of high strength glass ceramics, zirconia reinforced lithium silicate.

Celtra® Press is an all ceramic system for the creation of:

- ▶ Occlusal veneers
- ▶ Thin veneers
- ▶ Veneers
- ▶ Inlays
- ▶ Onlays
- ▶ Crowns in the anterior and posterior region
- ▶ 3 unit bridges in the anterior region up to the second premolar as the terminal abutment
- ▶ Crown or 3 unit bridge up to the second premolar placed on top of an implant abutment

Aesthetic benefits:

- ▶ Amazing chameleon effect provides in vivo blending
- ▶ Perfect balance of translucency and natural opalescence (natural vitality)
- ▶ Natural like opalescence reduces greying effect in the patient's mouth
- ▶ Excellent VITA shade matching

Material properties:

- ▶ Exceptional flexural strength >500 MPa for up to 3-unit anterior bridgework and reliable results up to 2nd premolar
- ▶ Excellent margin quality increases confidence in complex case designs
- ▶ Exceptional flow properties (smaller microcrystals of ZLS)

Save money and time:

- ▶ Familiar, but faster workflow = increased productivity
- ▶ Low-viscosity material, excellent flow properties, only one sprue for 3 unit bridges
- ▶ Fewer and easier working steps

Efficient

- ▶ Easy and accurate ingot selection
- ▶ "Right shade" out of the ingot – minimising any hue, value, chroma adjustments
- ▶ Easy and reliable staining concept



For more information, demonstrations or trial materials, please contact us.

Pressable Ceramic

CELTRA® PRESS LT INGOTS

Code	Description	Pack	Size
CP5365400006	LT A1	3pcs	6g
CP5365400007	LT A1	5pcs	3g
CP5365400016	LT A2	3pcs	6g
CP5365400017	LT A2	5pcs	3g
CP5365400026	LT A3	3pcs	6g
CP5365400027	LT A3	5pcs	3g
CP5365400056	LT B1	3pcs	6g
CP5365400057	LT B1	5pcs	3g
CP5365400096	LT C1	3pcs	6g
CP5365400097	LT C1	5pcs	3g
CP5365400136	LT D2	3pcs	6g
CP5365400137	LT D2	5pcs	3g



CELTRA® PRESS MT INGOTS

Code	Description	Pack	Size
CP5365400206	MT A1	3pcs	6g
CP5365400207	MT A1	5pcs	3g
CP5365400216	MT A2	3pcs	6g
CP5365400217	MT A2	5pcs	3g
CP5365400226	MT A3	3pcs	6g
CP5365400227	MT A3	5pcs	3g
CP5365400256	MT B1	3pcs	6g
CP5365400257	MT B1	5pcs	3g
CP5365400296	MT C1	3pcs	6g
CP5365400297	MT C1	5pcs	3g
CP5365400336	MT D2	3pcs	6g
CP5365400337	MT D2	5pcs	3g
CP5365400376	MT BL2	3pcs	6g
CP5365400377	MT BL2	5pcs	3g
CP5365400176	MT/LT BL2	3pcs	6g
CP5365400177	MT/LT BL2	5pcs	3g



Pressable Ceramic

CELTRA® PRESS HT INGOTS

Code	Description	Pack	Size
CP5365400526	HT i1	3pcs	6g
CP5365400527	HT i1	5pcs	3g
CP5365400536	HT i2	3pcs	6g
CP5365400537	HT i2	5pcs	3g
CP5365400546	HT i3	3pcs	6g
CP5365400547	HT i3	5pcs	3g



CELTRA® CERAM

Code	Description	Size
CP615130	Dentine - BL1	15g
CP615131	Dentine - BL2	15g
CP615132	Dentine - BL3	15g
CP615133	Dentine - BL4	15g
CP615134	Dentine - A1	15g
CP615135	Dentine - A2	15g
CP615136	Dentine - A3	15g
CP615137	Dentine - A3.5	15g
CP615138	Dentine - A4	15g
CP615139	Dentine - B1	15g
CP615140	Dentine - B2	15g
CP615141	Dentine - B3	15g
CP615142	Dentine - B4	15g
CP615143	Dentine - C1	15g
CP615144	Dentine - C2	15g
CP615145	Dentine - C3	15g
CP615146	Dentine - C4	15g
CP615147	Dentine - D2	15g
CP615148	Dentine - D3	15g
CP615149	Dentine - D4	15g
CP615161	Dentine Effect - DE1 (Blue)	15g
CP615162	Dentine Effect - DE2 (Green-Brown)	15g
CP615163	Dentine Effect - DE3 (Grey)	15g
CP615164	Dentine Effect - DE4 (Orange-Brown)	15g
CP615165	Dentine Effect - DE5 (Pink)	15g
CP615166	Dentine Effect - DE6 (Violet)	15g
CP615167	Dentine Effect - DE7 (Yellow)	15g
CP615168	Dentine Effect - DE5 (White)	15g
CP615169	Dentine Effect - DEg (Orange)	15g



Pressable Ceramic

CELTRA® CERAM

Code	Description	Size
CP615171	Dentine Gingiva - DG1 (Pink)	15g
CP615172	Dentine Gingiva - DG2 (Reddish-Pink)	15g
CP615173	Dentine Gingiva - DG3 (Salmon)	15g
CP615174	Dentine Gingiva - DG4 (Dark)	15g
CP615175	Dentine Gingiva - DG5 (Mahogany)	15g
CP615181	Power Dentine - PD1	15g
CP615182	Power Dentine - PD2	15g
CP615183	Power Dentine - PD3	15g
CP615184	Power Dentine - PD4	15g
CP615185	Power Dentine - PD5	15g
CP615186	Power Dentine - PD6	15g
CP615201	Enamel - E1 (Extra-Light)	15g
CP615202	Enamel - E2 (Light)	15g
CP615203	Enamel - E3 (Medium)	15g
CP615204	Enamel - E4 (Transparent)	15g
CP615205	Enamel - E5 (White)	15g
CP615211	Enamel Opal - E01 (Extra-Light)	15g
CP615212	Enamel Opal - E02 (Light)	15g
CP615213	Enamel Opal - E03 (Medium)	15g
CP615214	Enamel Opal - E04 (Transparent)	15g
CP615215	Enamel Opal - E05 (HT)	15g
CP615216	Enamel Opal - E06 (LT)	15g
CP615221	Enamel Effect - EE1 (Sunrise)	15g
CP615222	Enamel Effect - EE2 (Violet)	15g
CP615223	Enamel Effect - EE3 (Sunset)	15g
CP615224	Enamel Effect - EE4 (Fog)	15g
CP615225	Enamel Effect - EE5 (Sky)	15g
CP615226	Enamel Effect - EE6 (Ivory)	15g
CP615401	Add-on Correction - C1 (Light)	15g
CP615402	Add-on Correction - C2 (Medium)	15g
CP615403	Add-on Correction - C3 (Dark)	15g
CP615404	Add-on Correction - C4 (Transparent)	15g
CP615411	Add-on Gingiva - G1 (Pink)	15g
CP615412	Add-on Gingiva - G2 (Reddish-Pink)	15g
CP615413	Add-on Gingiva - G3 (Salmon)	15g
CP615414	Add-on Gingiva - G4 (Dark)	15g
CP615415	Add-on Gingiva - G5 (Mahogany)	15g



Pressable Ceramic

CELTRA® KITS

Celtra® Press Starter Kit contains: 5 x 3g MT A2 & 5 x 3g MT A3 Celtra® Press Ingots, 4g DS Prosthetics Die Material F10 & F12, 60g Celtra® Undercoating Wax, 60g Celtra® Modelling Wax, 2 x 100g Celtra® Press Investment, 100ml Celtra® Press Investment Liquid, 100g Celtra® Press Crucible former, 100g Celtra® Press Ring Former, 2 x Celtra® Press Investment Plunger, 3 x Firing Pad, 15g Celtra® Ceram Enamel E1 (Extra-Light) & E2 (Light), 5g DS Universal Overglaze High Flu, 15ml Universal Stain & Glaze Liquid, 15ml DS Modelling Liquid DU



Code: CP5365400113

Celtra® Ceram Basic Kit contains: 15g Celtra® Ceram Dentine BL2, A1, A2, A3, A3.5, B1, B2, B3, C1, C2, C3, D2 & D3, 15g Celtra® Ceram Enamel E1 (Extra-Light), E2 (Light), E3 (Medium), E4 (Transparent) & E5 (White), 15g Celtra® Ceram Enamel Opal, EO1 (Extra-Light), EO2 (Light), EO3 (Medium), EO4 (Transparent), EO5 (HT) & EO6 (LT), 15g Celtra® Ceram Add-on Correction C1 (Light), C2 (Medium), C3 (Dark) & C4 (Transparent), 5g DS Universal Overglaze High Flu, 50ml DS Modelling Liquid DU, 50ml Universal Stain & Glaze Liquid, DS Portioner, MagicWizard Brush, MagicStain Brush, OccluSpeed Brush, Shade Guide - Basic Indicator 1, Shade Guide - Basic Indicator 2

Code: CP600601

Celtra® Ceram Trial Kit contains: 15g Celtra® Ceram Dentine A2 & A3, 15g Celtra® Ceram Enamel E1 (Extra-Light), E2 (Light) & E4 (Transparent), 15g Celtra® Ceram Add-on Correction C3 (Dark), 5g DS Universal Overglaze High Flu, 15ml DS Modelling Liquid DU, 15ml Universal Stain & Glaze Liquid

Code: CP600602

Pressable Ceramic

Celtra® Ceram Aesthetic Kit contains: 15g Celtra® Ceram Dentine Effect DE1 (Blue), DE2 (Green-Brown), DE3 (Grey), DE4 (Orange-Brown), DE5 (Pink), DE6 (Violet), DE7 (Yellow), DE8 (White) & DE9 (Orange), 15g Celtra® Ceram Power Dentine PD1, PD2, PD3, PD4, PD5 & PD6, 15g Celtra® Ceram Enamel Effect EE1 (Sunrise), EE2 (Violet), EE3 (Sunset), EE4 (Fog), EE5 (Sky) & EE6 (Ivory), 15g Celtra® Ceram Dentine Gingiva DG3 (Salmon), 15g Celtra® Ceram Add-on Gingiva G3 (Salmon), 50ml DS Modelling Liquid DU, Shade Guide – Aesthetic Indicator, Shade Guide – Gingiva Indicator

Code: CP600603

Celtra® Ceram Gingiva Kit contains: 15g Celtra® Ceram Dentine Gingiva DG1 (Pink), DG2 (Reddish Pink), DG3 (Salmon), DG4 (Dark) & DG5 (Mahogany), 15g Celtra® Ceram Add-on Gingiva G1 (Pink), G2 (Reddish Pink), G3 (Salmon), G4 (Dark) & G5 (Mahogany), 50ml DS Modelling Liquid DU, Shade Guide – Gingiva Indicator

Code: CP600604

Universal Stains & Overglaze Kit contains: 5g DS Universal Body Stain S0, S1, S2, S3 & S4, 5g DS Universal Incisal Stain i1 & i2, 5g DS Universal Stain White, Crème, Sunset, Copper, Khaki, Olive, Mahogany, Violet, Purple, Raspberry, Grey, Chestnut, Blue & Pink, 15ml Universal Stain & Glaze Liquid, 5g DS Universal Overglaze, 5g DS Universal Overglaze High Flu, Shade Guide – Stains Indicator

Code: CP600700



Pressable Ceramic

CELTRA® COMPONENTS

Code	Description	Pack
CP601229	Celtra® Correction Material	15g
CP5323510011	Celtra® Undercoating Wax	60g
CP5323510019	Celtra® Modelling Wax	60g
CP5325320310	Celtra® Press Investment Powder	45 x 100g
CP5325400320	Celtra® Press Investment Liquid	1000ml
CP601126	Celtra® Modelling Liquid U	15ml
CP5365901204	Celtra® Firing Tray Pin Set	3pcs
CP5365901205	Firing Pad	
CP5365901206	Celtra® Press Ring Former (for 100g muffle)	
CP5365901207	Celtra® Press Ring Former (for 200g muffle)	
CP5365901208	Celtra® Press Sprue Former 100g Muffle (for 13 mm ingots)	
CP5365901209	Celtra® Press Sprue Former 200g Muffle (for 13 mm ingots)	
CP601002	Celtra® Ceram Shade Guide - Basic Indicator 1	
CP601003	Celtra® Ceram Shade Guide - Basic Indicator 2	
CP601004	Celtra® Ceram Shade Guide - Aesthetic Indicator	
CP601005	Celtra® Ceram Shade Guide - Gingiva Indicator	
CP601006	DS Shade Guide - Stains Indicator	



For the complete range of Celtra® Press products, please contact us.

Ceramic Additives

CERAFIRM

The universal mixing system for all types of ceramic that produces extremely firm ceramic mixes with the lowest possible shrinkage. Suitable for all types of HF and LF ceramics and has no influence on colour. Adjust the viscosity by mixing with the CeraFirm Add liquid.

Code	Description	Pack
HPD201-0000	CeraFirm Fluid	250ml
HPD201-1000	CeraFirm Add	10ml
HPD201-2000	CeraFirm Kit	250ml + 10ml



PROFORM-12

Porcelain additive that lends plasticity to the porcelain mass. Porcelain takes on a wax like consistency. Improves the stability of porcelain when modelling.

Code	Pack
87R14620000	50ml



Ceramic Firing

CENTRI™ PEG

Centri™ Peg is a unique refractory material primarily used for custom firing stabilisation but also has numerous other applications.

Code	Description	Pack	Size
44IPEG	Blue	1pc	12cc
44IPEGW	White	1pc	12cc



Ceramic Firing

HARVEST SUPERPEG™ II

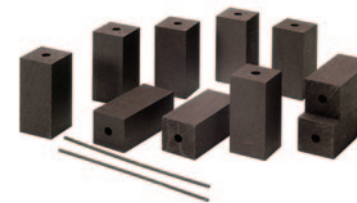
The ultimate firing paste peg putty. no drying time required and simple to clean up with no residue.



Code	Pack	Size
HPD8505	1pc	12cc
HPD8510	4pcs	12cc

RENFERT ACTIVE CARBON

For the continual cleaning of your porcelain furnace by absorbing the oxidation deposits caused when firing.



Code	Pack
87R20650000	10pcs

RENFERT FIBERTRAY

50mmø textile firing trays for stable positioning of porcelain models in the furnace.



Code	Pack
87R19190000	10pcs

INSTA-FRAC

Instant refractory material that hardens when fired.



Code	Size
39INF	56g

Characterisation & Staining

CERAMOTION® ONE TOUCH NO LIMITS SET

ceraMotion® One Touch No Limits contains ready to use colour coordinated 2D and 3D pastes, specially developed to go a step further in the aesthetics of all ceramic restorations and recreate in-depth effects of the natural teeth. The new 3D pastes are the first dentines in a paste, which increase the possibilities for layering all ceramic restorations thanks to the thixotropic effect, the new shades and translucency, retaining the dynamic light. All the ceraMotion® One Touch 2D and 3D pastes, liquids and ceraMotion® Stains Universal are fully mixable to create your own range of shades.

Kit contains: 3g paste glaze bright, 3g 3D dentine bleach, 3g 3D dentine light, 3g 3D dentine medium, 3g 3D dentine dark, 3g 3D transparent, 3g 3D incisal opal bright, 3g 3D I3, 3g 2D incisal I2, 3g 2D incisal I3, 3g 2D R, 3g 2D L, 3g 2D R+, 3g 2D body orange, 2g stains ST white, 2g stains ST red brown, 10ml diluting liquid, 10ml refreshing liquid, 2D brush, 3D brush

Code: 38250-801-70



CERAMOTION® ONE TOUCH SET

The original and hugely popular ceraMotion® One Touch are 2D and 3D pastes that have been specially developed for the finish and characterisation of all ceramic monolithic restorations, made from lithium disilicate or zirconia.

Kit contains: 3g paste glaze, 3g 3D incisal I2, 3g 3D lumin, 3g 3D neutral, 3g 3D opal blue, 3g 3D opal grey, 3g opal honey, 3g 2D body A, 3g 2D body B, 3g 2D body C, 3g 2D body D, 3g 2D white, 3g 2D grey, 3g 2D honey, 3g 2D blue, 3g 2D violet, 10ml diluting liquid, 10ml refreshing liquid, 2D brush, 3D brush

Code: 38250-800-70



Characterisation & Staining

CERAMOTION® ONE TOUCH TEST SET

Trial version of the exceptional ceraMotion® One Touch set.

Kit contains: 1g paste glaze, 1g 3D lumin, 1g 2D body A, 4ml diluting liquid, 4ml refreshing liquid, 3D Brush

Code: 38250-800-71



CERAMOTION® ONE TOUCH PINK SET

ceraMotion® One Touch Pink are specially developed 3D pastes for the aesthetic finalisation and characterisation of the gingiva coloured parts of ceramic restorations, made from lithium disilicate or zirconia. ceraMotion® One Touch Pink pastes are NOT fluorescent, just like natural gingiva.

Kit contains: 3g 3D gingival 1, 3g 3D gingival 2, 3g 3D gingival 3, 3g 3D gingival 4, 3g 3D gingival white, 3g 3D gingival transparent, 3g 3D gingival modifier, 10ml diluting liquid, 10ml refreshing liquid, 3D brush

Code: 38250-803-70



CERAMOTION® ONE TOUCH CONSUMABLES

Code	Description	Pack
38250-293-03	3D Dentine Bleach	3g
38250-303-03	3D Dentine Dark	3g
38250-304-03	3D Dentine Light	3g
38250-305-03	3D Dentine Medium	3g
38250-297-03	3D Gingival 1	3g
38250-313-03	3D Gingival 2	3g
38250-306-03	3D Gingival 3	3g
38250-307-03	3D Gingival 4	3g
38250-308-03	3D Gingival Modifier	3g
38250-309-03	3D Gingival Transparent	3g
38250-318-03	3D Gingival White	3g
38250-320-03	3D I3	3g
38250-317-03	3D Incisal I2	3g
38250-319-03	3D Incisal Opal Bright	3g
38250-311-03	3D Lumin	3g
38250-312-03	3D Neutral	3g



Characterisation & Staining

CERAMOTION® ONE TOUCH CONSUMABLES

Code	Description	Pack
38250-315-03	3D Opal Blue	3g
38250-316-03	3D Opal Grey	3g
38250-314-03	3D Opal Honey	3g
38250-310-03	3D Transparent	3g
38250-296-03	2D Blue	3g
38250-294-03	2D Body A	3g
38250-295-03	2D Body B	3g
38250-330-03	2D Body C	3g
38250-331-03	2D Body D	3g
38250-332-03	2D Body L	3g
38250-333-03	2D Body Orange	3g
38250-336-03	2D Body R	3g
38250-335-03	2D Body R+	3g
38250-334-03	2D Grey	3g
38250-299-03	2D Honey	3g
38250-300-03	2D Incisal I2	3g
38250-298-03	2D Incisal I3	3g
38250-301-03	2D Violet	3g
38250-302-03	2D White	3g
38254-220-02	Body Stains B ST A	2g
38254-221-02	Body Stains B ST B	2g
38254-222-02	Body Stains B ST C	2g
38254-012-01	Diluting Liquid	10ml
38250-271-03	Paste Glaze	3g
38250-272-03	Paste Glaze Bright	3g
38254-014-01	Refreshing Liquid	10ml
38254-010-02	Stains Liquid	20ml
38254-213-02	Stains ST Black	2g
38254-207-02	Stains ST Blue	2g
38254-208-02	Stains ST Grey	2g
38254-211-02	Stains ST Medium Brown	2g
38254-209-02	Stains ST Olive Green	2g
38254-210-02	Stains ST Olive Yellow	2g
38254-204-02	Stains ST Orange	2g
38254-205-02	Stains ST Pink	2g
38254-206-02	Stains ST Purple	2g
38254-212-02	Stains ST Red Brown	2g
38254-202-02	Stains ST Vanilla	2g



Characterisation & Staining

CERAMOTION® ONE TOUCH CONSUMABLES

Code	Description	Pack
38254-201-02	Stains ST White	2g
38254-203-02	Stains ST Yellow	2g
38260-906-20	3D Brush	
38260-905-20	2D Brush	

VITA AKZENT® PLUS CHROMA STAINS KIT

CTE-independent ceramic stains for all standard veneering ceramics, monolithic zirconia, silicate or feldspar ceramics. Allows the user to efficiently change the chromatic shade of the restoration without having to restart. Control the change by adjusting the mixing ratio, each powder represents a different shade group.

VITA AKZENT® PLUS CHROMA STAINS CLASSICAL kit contains: 4 x 3g VITA AKZENT® Plus CHROMA STAINS CHROMA A, B, C & D, 20ml VITA AKZENT® Plus POWDER FLUID, VITA AKZENT® Plus CHROMA STAINS colour sample classical

Code: VBAPKCSC

VITA AKZENT® PLUS CHROMA STAINS 3D-MASTER kit contains: 5 x 3g VITA AKZENT® Plus CHROMA STAINS CHROMA L, CHROMA R, CHROMA IO & CHROMA M2-CHROMA M3, 20ml VITA AKZENT® Plus POWDER FLUID, VITA AKZENT® Plus CHROMA STAINS colour sample 3D-MASTER

Code: VBAPKCS3D

For more information about the complete range of VITA AKZENT® PLUS CHROMA STAINS please contact us.



Composite

VITAVM®LC

Simple to use and available in two formats of processing for almost unlimited possibilities, the VITAVM®LC product family will meet all your expectations when it comes to a veneering composite. Whether it's in the form of a paste composite, the low viscosity flow materials or freely combined, VITAVM®LC offers brilliant aesthetics with excellent shade reproduction, based on the original VITA shade formula. VITAVM®LC has outstanding material properties and is also incredibly similar to ceramic.



VITAVM®LC FLOW CHROMA PLUS

Code	Description	Size
VC44241F3	Chroma Plus CP1	3g
VC44242F3	Chroma Plus CP2	3g
VC44243F3	Chroma Plus CP3	3g
VC44244F3	Chroma Plus CP4	3g
VC44245F3	Chroma Plus CP5	3g



VITAVM®LC FLOW DENTINE

Code	Description	Size
VC44431F4	Base Dentine A1	4g
VC44432F4	Base Dentine A2	4g
VC44433F4	Base Dentine A3	4g
VC44434F4	Base Dentine A3.5	4g
VC44435F4	Base Dentine A4	4g
VC44437F4	Base Dentine B2	4g
VC44438F4	Base Dentine B3	4g
VC44439F4	Base Dentine B4	4g
VC44440F4	Base Dentine C1	4g
VC44441F4	Base Dentine C2	4g
VC44442F4	Base Dentine C3	4g
VC44443F4	Base Dentine C4	4g
VC44444F4	Base Dentine D2	4g
VC44445F4	Base Dentine D3	4g
VC44446F4	Base Dentine D4	4g



Composite

VITAVM®LC FLOW GINGIVA

Code	Description	Size
VC44231F3	Gingiva G1	3g
VC44232F3	Gingiva G2	3g
VC44233F3	Gingiva G3	3g
VC44234F3	Gingiva G4	3g
VC44235F3	Gingiva G5	3g



VITAVM®LC FLOW EFFECT

Code	Description	Size
VC44091F3	Effect Enamel EE1	3g
VC44092F3	Effect Enamel EE2	3g
VC44095F3	Effect Enamel EE5	3g
VC44096F3	Effect Enamel EE6	3g
VC44097F3	Effect Enamel EE7	3g
VC44099F3	Effect Enamel EE9	3g
VC44101F3	Effect Enamel EE11	3g
VC44102F3	Effect Enamel EE12	3g
VC44181F3	Window WIN	3g



VITAVM®LC FLOW ENAMEL

Code	Description	Size
VC44191F4	Enamel ENL	4g
VC44192F4	Enamel END	4g



VITAVM®LC FLOW NEUTRAL

Code	Description	Size
VC44201F4	Neutral NT	4g



VITAVM®LC CHROMA PLUS

Code	Description	Size
VC442414	Chroma Plus CP1	4g
VC442424	Chroma Plus CP2	4g
VC442434	Chroma Plus CP3	4g
VC442444	Chroma Plus CP4	4g
VC442454	Chroma Plus CP5	4g



Composite

VITAVM®LC DENTINE

Code	Description	Size
VC440314	Base Dentine 0M1	4g
VC440344	Base Dentine 1M1	4g
VC440354	Base Dentine 1M2	4g
VC440364	Base Dentine 2L1.5	4g
VC440374	Base Dentine 2L2.5	4g
VC440384	Base Dentine 2M1	4g
VC440394	Base Dentine 2M2	4g
VC440404	Base Dentine 2M3	4g
VC440414	Base Dentine 2R1.5	4g
VC440424	Base Dentine 2R2.5	4g
VC440434	Base Dentine 3L1.5	4g
VC440444	Base Dentine 3L2.5	4g
VC440454	Base Dentine 3M1	4g
VC440464	Base Dentine 3M2	4g
VC440474	Base Dentine 3M3	4g
VC440484	Base Dentine 3R1.5	4g
VC440494	Base Dentine 3R2.5	4g
VC440504	Base Dentine 4L1.5	4g
VC440514	Base Dentine 4L2.5	4g
VC440524	Base Dentine 4M1	4g
VC440534	Base Dentine 4M2	4g
VC440544	Base Dentine 4M3	4g
VC440554	Base Dentine 4R1.5	4g
VC440564	Base Dentine 4R2.5	4g
VC440574	Base Dentine 5M1	4g
VC440584	Base Dentine 5M2	4g
VC440594	Base Dentine 5M3	4g
VC444314	Base Dentine A1	4g
VC444324	Base Dentine A2	4g
VC444334	Base Dentine A3	4g
VC444344	Base Dentine A3.5	4g
VC444354	Base Dentine A4	4g
VC444374	Base Dentine B2	4g
VC444384	Base Dentine B3	4g
VC444394	Base Dentine B4	4g
VC444404	Base Dentine C1	4g
VC444414	Base Dentine C2	4g
VC444424	Base Dentine C3	4g
VC444434	Base Dentine C4	4g



Composite

VITAVM®LC DENTINE

Code	Description	Size
VC444444	Base Dentine D2	4g
VC444454	Base Dentine D3	4g
VC444464	Base Dentine D4	4g



VITAVM®LC EFFECT

Code	Description	Size
VC441424	Effect Liner EL2	4g
VC441434	Effect Liner EL3	4g
VC441444	Effect Liner EL4	4g
VC441454	Effect Liner EL5	4g
VC441464	Effect Liner EL6	4g
VC440924	Effect Enamel EE2	4g
VC440934	Effect Enamel EE3	4g
VC440964	Effect Enamel EE6	4g
VC440994	Effect Enamel EE9	4g
VC441024	Effect Enamel EE12	4g



VITAVM®LC ENAMEL

Code	Description	Size
VC441914	Enamel ENL	4g
VC441924	Enamel END	4g



VITAVM®LC GINGIVA

Code	Description	Size
VC4427110	Gingiva Opaque GOL	10g
VC443713	Gingiva Opaque Paste GOL	3g
VC442314	Gingiva G1	4g
VC442324	Gingiva G2	4g
VC442344	Gingiva G4	4g
VC442354	Gingiva G5	4g



Composite

VITAVM®LC OPAQUE

Code	Description	Size
VC4400110	Opaque 0M1	10g
VC4400410	Opaque 1M1	10g
VC4400510	Opaque 1M2	10g
VC4400610	Opaque 2L1.5	10g
VC4400710	Opaque 2L2.5	10g
VC4400810	Opaque 2M1	10g
VC4400910	Opaque 2M2	10g
VC4401010	Opaque 2M3	10g
VC4401110	Opaque 2R1.5	10g
VC4401210	Opaque 2R2.5	10g
VC4401310	Opaque 3L1.5	10g
VC4401410	Opaque 3L2.5	10g
VC4401510	Opaque 3M1	10g
VC4401610	Opaque 3M2	10g
VC4401710	Opaque 3M3	10g
VC4401810	Opaque 3R1.5	10g
VC4401910	Opaque 3R2.5	10g
VC4402010	Opaque 4L1.5	10g
VC4402110	Opaque 4L2.5	10g
VC4402210	Opaque 4M1	10g
VC4402310	Opaque 4M2	10g
VC4402410	Opaque 4M3	10g
VC4402510	Opaque 4R1.5	10g
VC4402610	Opaque 4R2.5	10g
VC4402710	Opaque 5M1	10g
VC4402810	Opaque 5M2	10g
VC4402910	Opaque 5M3	10g
VC4428110	Colour Opaque CO1	10g
VC4428210	Colour Opaque CO2	10g
VC4428310	Colour Opaque CO3	10g
VC445913	Pre Opaque PO	3g



VITAVM®LC NEUTRAL

Code	Description	Size
VC442014	Neutral NT	4g



Composite

VITAVM®LC PAINT

Code	Description	Size
VC444012	Paint PT1	2g
VC444032	Paint PT3	2g
VC444052	Paint PT5	2g
VC444082	Paint PT8	2g
VC444092	Paint PT9	2g
VC444122	Paint PT12	2g
VC444132	Paint PT13	2g
VC444152	Paint PT15	2g
VC444172	Paint PT17	2g
VC444192	Paint PT19	2g



VITAVM®LC PASTE OPAQUE

Code	Description	Size
VC445013	Paste Opaque 0M1	3g
VC445043	Paste Opaque 1M1	3g
VC445053	Paste Opaque 1M2	3g
VC445063	Paste Opaque 2L1.5	3g
VC445083	Paste Opaque 2M1	3g
VC445093	Paste Opaque 2M2	3g
VC445103	Paste Opaque 2M3	3g
VC445133	Paste Opaque 3L1.5	3g
VC445163	Paste Opaque 3M2	3g
VC445173	Paste Opaque 3M3	3g
VC445193	Paste Opaque 3R2.5	3g
VC445233	Paste Opaque 4M2	3g
VC443013	Paste Opaque A1	3g
VC443023	Paste Opaque A2	3g
VC443033	Paste Opaque A3	3g
VC443043	Paste Opaque A3.5	3g
VC443053	Paste Opaque A4	3g
VC443073	Paste Opaque B2	3g
VC443083	Paste Opaque B3	3g
VC443093	Paste Opaque B4	3g
VC443103	Paste Opaque C1	3g
VC443113	Paste Opaque C2	3g
VC443123	Paste Opaque C3	3g
VC443133	Paste Opaque C4	3g
VC443143	Paste Opaque D2	3g
VC443153	Paste Opaque D3	3g
VC443163	Paste Opaque D4	3g



Composite

VITAVM®LC LIQUIDS & ACCESSORIES

Code	Description	Size
VCVML0L5	Opaque	5ml
VCVMLM10	Modelling	10ml
VCVMLM30	Modelling	30ml
VCVMLS30	Separator	30ml
VCVMLC50	Cleaner	50ml
VCVMLG20	Gel	20ml



VITAVM®LC FLOW BASIC KIT VITA CLASSICAL A1-D4®

Kit contains: 3g VITAVM®LC PRE OPAQUE, 15 x 3g VITAVM®LC OPAQUE PASTE A1-D4, 15 x 4g VITAVM®LC flow BASE DENTINE A1-D4, 2 x 4g VITAVM®LC flow ENAMEL ENL & END, 5 x 3g VITAVM®LC flow CHROMA PLUS CP1-CP5, 50ml VITAVM®LC CLEANER, 20ml VITAVM®LC GEL, 10ml VITAVM®LC MODELLING LIQUID, 30ml VITAVM®LC SEPARATOR, VITA black mixing palette, white brush holder, 50 x disposable brush heads, No.1 correction brush, shade guide for VITAVM® INDIVIDUAL, VITA classical A1-D4® shade guide



Code: VCVLCFBKCV2

VITAVM®LC FLOW BASIC KIT SMALL VITA CLASSICAL A1-D4®

Kit contains: 3g VITAVM®LC PRE OPAQUE PRE, 6 x 3g VITAVM®LC OPAQUE PASTE A1-A3.5, B3 & D3, 6 x 4g VITAVM®LC flow BASE DENTINE A1-A3.5, B3 & D3, 2 x 4g VITAVM®LC flow ENAMEL ENL & END, 5 x 3g VITAVM®LC flow CHROMA PLUS CP1-CP5, 50ml VITAVM®LC CLEANER, 20ml VITAVM®LC GEL, 10ml VITAVM®LC MODELLING LIQUID, 30ml VITAVM®LC SEPARATOR, VITA black mixing palette, white brush holder, 50 x disposable brush heads, No.1 correction brush



Code: VCVLCFBKSCV2

Composite

VITAVM®LC FLOW CREATIVE KIT

Kit contains: 4 x 2g VITAVM®LC PAINT PT1, PT5, PT15 & PT17, 4g VITAVM®LC flow ENAMEL ENL, 2 x 3g VITAVM®LC flow EFFECT ENAMEL EE6 & EE9, 4g VITAVM®LC flow NEUTRAL NT, 3g VITAVM®LC flow WINDOW WIN, 5ml VITAVM®LC GEL, 10ml VITAVM®LC MODELLING LIQUID, No. E o staining brush

Code: VCVLCFCKV1



VITAVM®LC FLOW PROFESSIONAL KIT

Kit contains: 8 x 3g VITAVM®LC flow EFFECT ENAMEL EE1-EE2, EE5-EE7, EE9 & EE11-EE12, 3g VITAVM®LC flow WINDOW WIN, 4g VITAVM®LC flow NEUTRAL NT, shade guide for VITAVM® INDIVIDUAL

Code: VCVLCFPKV1



VITAVM®LC FLOW GINGIVA KIT

Kit contains: 3g VITAVM®LC GINGIVA OPAQUE PASTE GOL, 5 x 3g VITAVM®LC flow GINGIVA G1-G5, shade guide for VITAVM® INDIVIDUAL

Code: VCVLCFGK



VITAVM®LC FLOW CHROMA PLUS KIT

Kit contains: 5 x 3g VITAVM®LC flow CHROMA PLUS CP1-CP5, shade guide for VITAVM® INDIVIDUAL

Code: VCVLCFCHK



Composite

VITAVM[®]LC PASTE BASIC KIT

VITAVM[®]LC paste BASIC KIT VITA SYSTEM 3D-MASTER[®] kit contains: 3g VITAVM[®]LC PRE OPAQUE PRE, 15 x 10g VITAVM[®]LC OPAQUE 2L2.5-5M3, 13g VITAVM[®]LC OPAQUE PASTE 1M1-1M2, 2L1.5, 2M1-2M3, 3L1.5, 3M2-3M3, 3R2.5 & 4M2, 26 x 4g VITAVM[®]LC BASE DENTINE 1M1-1M2, 2L1.5-2L2.5, 2M1- 2M3, 2R1.5-2R2.5, 3L1.5-3L2.5, 3M1-3M3, 3R1.5 - 3R2.5, 4L1.5-4L2.5, 4M1-4M3, 4R1.5-4R2.5 & 5M1-5M3, 2 x 4g VITAVM[®]LC ENAMEL ENL & END, 4g VITAVM[®]LC NEUTRAL NT, 3g VITAVM[®]LC flow WINDOW WIN, 5 x 3g VITAVM[®]LC flow CHROMA PLUS CP1-CP5, 2 x 5ml VITAVM[®]LC OPAQUE LIQUID, 10ml VITAVM[®]LC MODELLING LIQUID, 30ml VITAVM[®]LC SEPARATOR, 50ml VITAVM[®]LC CLEANER, 20ml VITAVM[®]LC GEL, VITA black mixing palette, white brush holder, 50 x disposable brush heads, mixing spatula, measuring spoon, two-sided mixing spatula, No. E 0 staining brush, shade guide for VITAVM[®] INDIVIDUAL, VITA Toothguide 3D-MASTER[®] with BLEACHED SHADE GUIDE

Code: VCVLCPBK

VITAVM[®]LC paste BASIC KIT VITA classical A1-D4[®] kit

contains: 3g VITAVM[®]LC PRE OPAQUE PRE, 15 x 3g VITAVM[®]LC OPAQUE PASTE A1-D4, 15 x 4g VITAVM[®]LC BASE DENTINE A1-D4, 2 x 4g VITAVM[®]LC ENAMEL ENL & END, 4g VITAVM[®]LC NEUTRAL NT, 3g VITAVM[®]LC flow WINDOW WIN, 5 x 3g VITAVM[®]LC flow CHROMA PLUS CP1-CP5, 20ml VITAVM[®]LC GEL, 10ml VITAVM[®]LC MODELLING LIQUID, 30ml VITAVM[®]LC SEPARATOR, 50ml VITAVM[®]LC CLEANER, VITA black mixing palette, white brush holder, 50 x disposable brush heads, No. E 0 staining brush, shade guide for VITAVM[®] INDIVIDUAL, VITA classical A1-D4[®] shade guide

Code: VCVLCPBKC



Composite

VITAVM[®]LC PASTE BASIC KIT SMALL

VITAVM[®]LC paste BASIC KIT SMALL VITA SYSTEM 3D-MASTER[®] kit contains: 3g VITAVM[®]LC PRE OPAQUE PRE, 13g VITAVM[®]LC OPAQUE PASTE 1M1-1M2, 2L1.5, 2M1-2M3, 3L1.5, 3M2-3M3, 3R2.5 & 4M2, 14g VITAVM[®]LC BASE DENTINE 1M1-1M2, 2L1.5, 2M1-2M3, 3L1.5, 3M2-3M3, 3R2.5 & 4M2, 2 x 4g VITAVM[®]LC ENAMEL ENL & END, 4g VITAVM[®]LC NEUTRAL NT, 3g VITAVM[®]LC flow WINDOW WIN, 5 x 3g VITAVM[®]LC flow CHROMA PLUS CP1-CP5, 10ml VITAVM[®]LC MODELLING LIQUID, 30ml VITAVM[®]LC SEPARATOR, 50ml VITAVM[®]LC CLEANER, 20ml VITAVM[®]LC GEL, VITA black mixing palette, white brush holder, 50 x disposable brush heads, No. E 0 staining brush, shade guide for VITAVM[®] INDIVIDUAL, VITA Toothguide 3D-MASTER[®] with BLEACHED SHADE GUIDE

Code: VCVLCPBKS

VITAVM[®]LC paste BASIC KIT SMALL VITA classical A1-D4[®] kit

contains: 3g VITAVM[®]LC PRE OPAQUE PRE, 6 x 3g VITAVM[®]LC OPAQUE PASTE A1-A3.5, B3 & D3, 6 x 4g VITAVM[®]LC BASE DENTINE A1-A3.5, B3 & D3, 4 x 3g VITAVM[®]LC flow CHROMA PLUS CP1-CP3 & CP5, 20ml VITAVM[®]LC GEL, 2 x 4g VITAVM[®]LC ENAMEL ENL & END, 4g VITAVM[®]LC NEUTRAL NT, 3g VITAVM[®]LC flow WINDOW WIN, 10ml VITAVM[®]LC MODELLING LIQUID, 30ml VITAVM[®]LC SEPARATOR, 50ml VITAVM[®]LC CLEANER, VITA black mixing palette, white brush holder, 50 x disposable brush heads, No. E 0 staining brush, shade guide for VITAVM[®] INDIVIDUAL, VITA classical A1-D4[®] shade guide

Code: VCVLCPBKSC

VITAVM[®]LC PASTE GINGIVA KIT

Kit contains: 3g VITAVM[®]LC GINGIVA OPAQUE PASTE GOL, 4 x 4g VITAVM[®]LC GINGIVA G1-G2 & G4-G5, shade guide for VITAVM[®] INDIVIDUAL

Code: VCVLCPGK



Composite

VITAVM[®]LC COMBI BASIC KIT

VITAVM[®]LC combi BASIC KIT VITA SYSTEM 3D-MASTER[®] kit contains: 3g VITAVM[®]LC PRE OPAQUE PRE, 15 x 10g VITAVM[®]LC OPAQUE 2L2.5-5M3, 13g VITAVM[®]LC OPAQUE PASTE 1M1-1M2, 2L1.5, 2M1-2M3, 3L1.5, 3M2-3M3, 3R2.5 & 4M2, 26 x 4g VITAVM[®]LC BASE DENTINE 1M1-1M2, 2L1.5-2L2.5, 2M1- 2M3, 2R1.5-2R2.5, 3L1.5-3L2.5, 3M1-3M3, 3R1.5 - 3R2.5, 4L1.5-4L2.5, 4M1-4M3, 4R1.5-4R2.5 & 5M1-5M3, 2 x 4g VITAVM[®]LC flow ENAMEL ENL & END, 4g VITAVM[®]LC flow NEUTRAL NT, 3g VITAVM[®]LC flow WINDOW WIN, 5 x 3g VITAVM[®]LC flow CHROMA PLUS CP1-CP5, 2 x 5ml VITAVM[®]LC OPAQUE LIQUID, 10ml VITAVM[®]LC MODELLING LIQUID, 30ml VITAVM[®]LC SEPARATOR, 50ml VITAVM[®]LC CLEANER, 20ml VITAVM[®]LC GEL, VITA black mixing palette, white brush holder, 50 x disposable brush heads, mixing spatula, measuring spoon, two-sided mixing spatula, No. E 0 staining brush, shade guide for VITAVM[®] INDIVIDUAL, VITA Toothguide 3D-MASTER[®] with BLEACHED SHADE GUIDE

Code: VCVLCCBK



VITAVM[®]LC combi BASIC KIT VITA classical A1-D4[®] kit contains: 3g VITAVM[®]LC PRE OPAQUE PRE, 15 x 3g VITAVM[®]LC OPAQUE PASTE A1-D4, 15 x 4g VITAVM[®]LC BASE DENTINE A1-D4, 2 x 4g VITAVM[®]LC flow ENAMEL ENL & END, 4g VITAVM[®]LC flow NEUTRAL NT, 3g VITAVM[®]LC flow WINDOW WIN, 5 x 3g VITAVM[®]LC flow CHROMA PLUS CP1-CP5, 20ml VITAVM[®]LC GEL, 10ml VITAVM[®]LC MODELLING LIQUID, 30ml VITAVM[®]LC SEPARATOR, 50ml VITAVM[®]LC CLEANER, VITA black mixing palette, white brush holder, 50 x disposable brush heads, No. E 0 staining brush, shade guide for VITAVM[®] INDIVIDUAL, VITA classical A1-D4[®] shade guide

Code: VCVLCCBK



Composite

VITAVM[®]LC COMBI BASIC KIT SMALL

VITAVM[®]LC combi BASIC KIT SMALL VITA SYSTEM 3D-MASTER[®] kit contains: 3g VITAVM[®]LC PRE OPAQUE PRE, 11 x 3g VITAVM[®]LC OPAQUE PASTE 1M1-1M2, 2L1.5, 2M1-2M3, 3L1.5, 3M2-3M3, 3R2.5 & 4M2, 11 x 4g VITAVM[®]LC BASE DENTINE 1M1-1M2, 2L1.5, 2M1-2M3, 3L1.5, 3M2-3M3, 3R2.5 & 4M2, 2 4g VITAVM[®]LC flow ENAMEL ENL & END, 4g VITAVM[®]LC flow NEUTRAL NT, 3g VITAVM[®]LC flow WINDOW WIN, 5 x 3g VITAVM[®]LC flow CHROMA PLUS CP1-CP5, 10ml VITAVM[®]LC MODELLING LIQUID, 30ml VITAVM[®]LC SEPARATOR, 50ml VITAVM[®]LC CLEANER, 20ml VITAVM[®]LC GEL, VITA black mixing palette, white brush holder, 50 x disposable brush heads, No. E 0 staining brush, shade guide for VITAVM[®] INDIVIDUAL, VITA Toothguide 3D-MASTER[®] with BLEACHED SHADE GUIDE

Code: VCVLCCBK



VITAVM[®]LC combi BASIC KIT SMALL VITA classical A1-D4[®]

kit contains: 3g VITAVM[®]LC PRE OPAQUE PRE, 6 x 3g VITAVM[®]LC OPAQUE PASTE A1-A3.5, B3 & D3, 6 x 4g VITAVM[®]LC BASE DENTINE A1-A3.5, B3 & D3, 4 x 3g VITAVM[®]LC flow CHROMA PLUS CP1-CP3 & CP5, 20 ml VITAVM[®]LC GEL, 2 x 4g VITAVM[®]LC flow ENAMEL ENL & END, 4g VITAVM[®]LC flow NEUTRAL NT, 3g VITAVM[®]LC flow WINDOW WIN, 10ml VITAVM[®]LC MODELLING LIQUID, 30ml VITAVM[®]LC SEPARATOR, 50ml VITAVM[®]LC CLEANER, VITA black mixing palette, white brush holder, 50 x disposable brush heads, No. E 0 staining brush, shade guide for VITAVM[®] INDIVIDUAL, VITA classical A1-D4[®] shade guide

Code: VCVLCCBK



Crown Stands

CENTRI™ FIRING TRAY

Firing tray with silica pins, suitable for bridges.

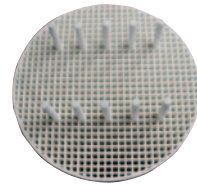
Code: 51FT



CENTRI™ HONEYCOMB

Round firing tray with 20 ceramic pins.

Code: 51HCFT

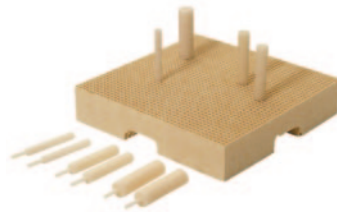


RENFERT MESH TRAY K

Firing tray supplied with 10 ceramic pins, for individual positioning of crowns and bridges in the furnace.

Code	Pack	Dimensions
87R19220100	2pcs	55 x 53 x 10mm

Code	Pack
87R919220002	Contains: 3x2mmø, 4x3mmø and 3x4mmø ceramic pins 10pcs

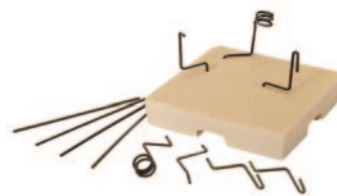


RENFERT MESH TRAY

Lightweight firing tray, for individual positioning of crowns and bridges in the furnace. Supplied with 10 support wires.

Code	Pack	Dimensions
87R19220000	2pcs	55 x 53 x 10mm

Code	Pack
87R919220001	Support wires - 1mmø - 6 x shaped and 4 x straight 10pcs
87R919220003	Support wires - 1mmø - straight 20pcs



15 PIN CROWN STAND

15 point silicone nitride crown stand.

Code: 32CS



Debubbliser

CENTRI™ DB

Surface tension reducing agent for wax, silicone, impression materials and plaster. Supplied with fine misting spray bottle.

Code	Size
44HSDB	900ml



HARVEST SURFACTANT™

For bubble free models and casts, Surfactant™ reduces surface tension on wax, alginate/impressions and Polyether (i.e. Impregum™). The fine mist does not require drying time and allows gypsum and investment to flow smoothly into all areas. Non-contaminating and alcohol free.

Code	Description	Size
HPD7061	Refill Bottle (includes empty 236ml trigger spray bottle)	946ml
HPD7060	Trigger Spray Bottle	236ml



Die Hardeners & Sealers

HARVEST MS1™

Master die sealer and hardener that protects the margins from chipping. 0.1 thickness ensures there is no interference with the restoration.

Code	Size
HPD7169	30ml
HPD7176	236ml



RENFERT SURFACE HARDENER

Acrylic solution for the hardening and sealing of plaster models.

Code:	Size:
87R17192000	125ml



Die Spacers

HARVEST SUREFIT™

Easy to use and with great coverage, SureFit™ creates a dense and hard surface with only 15 seconds drying time.

Code	Description	Pack
HPD7151	Blue 12μ	15ml
HPD7152	Grey 12μ	15ml
HPD7156	Dentine 12μ	15ml
HPD7158	Red 12μ	15ml
HPD7159	Gold 6μ	15ml
HPD7160	Silver 6μ	15ml
HPD7153	Thinner 0μ	15ml
HPD7162	Gold/Silver/Thinner Kit	3 x 15ml
HPD7163	Red/Blue/Thinner Kit	3 x 15ml



HARVEST TRUEPREP™

Die spacer system that accurately recreates the desired lithium disilicate restoration shade on the plaster die.

Code	Description	Pack
HPD7501	HD1 12μ	7ml
HPD7502	HD2 12μ	7ml
HPD7503	HD3 12μ	7ml
HPD7504	HD4 12μ	7ml
HPD7505	HD5 12μ	7ml
HPD7506	HD6 12μ	7ml
HPD7507	HD7 12μ	7ml
HPD7508	HD8 12μ	7ml
HPD7509	HD9 12μ	7ml
HPD7510	Thinner 0μ	7ml
HPD7500	HD1-9 Kit	9 x 7ml



RENFERT DIE:MASTER

Hard wearing die spacer system in a variety of thicknesses.

Code	Description	Pack
87R19560300	Blue 20μ	15ml
87R19560200	Red 15μ	15ml
87R19560400	Silver 13μ	15ml
87R19560500	Gold 13μ	15ml
87R19570200	Ivory 10μ	15ml
87R19560700	Thinner 0μ	15ml



For more information on the complete Renfert die:master range, please contact us.

Die Stones

ULTRAROCK

Premium extra hard die stone, with high definition and excellent dimensional stability.

Type	Class IV
Mixing ratio	20ml/100g
Expansion	0.08%
Strength (24hrs)	900kg/cm ²

Code	Description	Size
83KBURB25	Beige	25kg
83KBURB5	Beige	5kg
83KBURP25	Pink	25kg
83KBURP5	Pink	5kg
83KBURVY25	Vivid Yellow	25kg
83KBURVY5	Vivid Yellow	5kg



SINGLETYP04® LG

Exceptional quality, scannable, extra hard die stone with high definition and good dimensional stability.

Type	Class IV
Mixing ratio	22ml/100g
Expansion	0.09%
Strength (24hrs)	1051kg/cm ²

Code	Description	Size
66TXG425	Light Grey	25kg



SINGLETYP04® GB

Exceptional quality, scannable, extra hard die stone with high definition and good dimensional stability.

Type	Class IV
Mixing ratio	20ml/100g
Expansion	0.08%
Strength (24hrs)	860kg/cm ²

Code	Description	Size
66TXE425	Golden Brown	25kg



Die Stones

MODELTYPO®

Outstanding value, hard die stone with high definition and excellent dimensional stability.

Type	Class IV
Mixing ratio	25ml/100g
Expansion	0.08%
Strength (24hrs)	713kg/cm ²

Code	Description	Size
66TPM425	Pink	25kg



Disposable Articulators

BLUE LINE DISPOSABLE ARTICULATORS

Code	Pack
03CDA	25pcs



EXCELUM DISPOSABLE ARTICULATORS

For use with both flat and slot tray systems.

Code	Pack
51EXDA	100pcs



Etching

LISIFUSE CONNECT

Transparent lithium silicate powder that creates a bond between zirconia and any type of ceramic restoration. Intracoronary use allows etching of monolithic zirconia restorations before cementing, even on veneers. Suitable surface preparation is paramount.

Code	Size
HPD265-0050	50ml



Etching

TRI-DYNAMICS CERAMIC ETCH GEL

Established and reliable ceramic etching gel.



Code	Size
39CEG	15ml

TRI-DYNAMICS METAL ETCH GEL

Established and reliable metal etching gel.



Code	Size
07MEG	15ml

Gingiva Masking/Creation

XILGUM

Used for the fast production of gum morphology.

- ▶ Scannable
- ▶ 72 Shore hardness
- ▶ High detail definition (20µ)
- ▶ High dimensional stability
- ▶ Suitable for direct and indirect technique
- ▶ No shrinkage or deformation
- ▶ Easy to finish
- ▶ Natural colour
- ▶ Working time @ 23°C - 2 minutes
- ▶ Setting time @ 23°C - 10 minutes

Code	Size
66XGUM	2 x 50ml



Gingiva Masking/Creation

XILGUM SOFT

Used for the fast production of gum morphology.

- ▶ Scannable
- ▶ 40 Shore hardness
- ▶ High detail definition (20µ)
- ▶ High dimensional stability
- ▶ Suitable for direct and indirect technique
- ▶ No shrinkage or deformation
- ▶ Easy to finish
- ▶ Natural colour
- ▶ Working time @ 23°C – 1.45 minutes
- ▶ Setting time @ 23°C – 6 minutes



Code	Size
66XGUMST	2 x 50ml

XILGUM MIXING TIPS

Code	Description	Pack
66XLG200	Light Blue	48pcs



CENTRI™ GUN

Universal cartridge dispensing gun (1:1, 2:1, 4:1 and 10:1).

Code: 41CCG



CERAMOTION® ONE TOUCH PINK SET

ceramotion® One Touch Pink are specially developed 3D pastes for the aesthetic finalisation and characterisation of the gingiva coloured parts of ceramic restorations, made from lithium disilicate and zirconia. ceramotion® One Touch Pink pastes are NOT fluorescent, just like natural gingiva.

Kit contains: 3g 3D gingival 1, 3g 3D gingival 2, 3g 3D gingival 3, 3g 3D gingival 4, 3g 3D gingival white, 3g 3D gingival transparent, 3g 3D gingival modifier, 10ml diluting liquid, 10ml refreshing liquid, 3D brush

Code: 38250-803-70



Gingiva Masking/Creation

VITAVM®LC GINGIVA KIT

For the characterisation or reconstruction of gingival areas.



FLOW

Contains:

- ▶ 1 x 3g VITAVM®LC GINGIVA OPAQUE PASTE GOL
- ▶ 5 x 3g VITAVM®LC flow GINGIVA (G1-G5)
- ▶ 1 x shade guide for VITAVM® INDIVIDUAL

PASTE

Contains:

- ▶ 1 x 3g VITAVM®LC GINGIVA OPAQUE PASTE GOL
- ▶ 4 x 4g VITAVM®LC GINGIVA (G1-G2, G4-G5)
- ▶ 1 x shade guide for VITAVM® INDIVIDUAL

Code: VCVLCFGK

Code: VCVLCPGK

Glazing

CERAMOTION® PASTE GLAZE

Groundbreaking glazing paste for lithium disilicate that has incredible levels of fluorescence. When fired, the material becomes glass clear and the perfect surface for staining.

Code	Size
38250-271-03	3g



CERAMOTION® PASTE GLAZE BRIGHT

Has the same outstanding characteristics as Ceramotion® Paste Glaze but with even more fluorescence, making the restoration "brighter".

Code	Size
38250-272-03	3g



Glazing

CERAMOTION® DILUTING LIQUID

Used to adjust the viscosity of ceraMotion® Paste Glaze.



Code	Size
38254-012-01	10ml

ENAMELITE® LF FLUORESCENT SPRAY

Allows the user to stain and glaze multiple units in one firing, with great levels of fluorescence built



Code	Size
39ELFS	46g

Ceramic Hand Tools

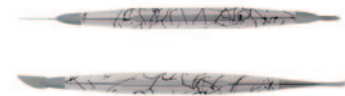
GREENSTEIN

Code	Description
66CSIGR1G	Gold
66CSIGR2R	Red
66CSIGR3B	Blue
66ZFL081	Flexible tip #1
66ZFL082	Flexible tip #2
66ZFL083	Flexible tip #3
66ZFL071	Superflexible tip #1
66ZFL072	Superflexible tip #2
66ZFL073	Superflexible tip #3



RENFERT ERGO CERAMIC

Code	Description
87R11611100	Instrument #1 has a large blade for separating and large claw for tooth modelling
87R11611200	Instrument #2 has a fine needle for creating fissures and enamel cracks and a small blade for detailed areas



Ceramic Hand Tools

AGATE SPATULA

Double ended agate mixing instrument for ceramic.

Code: 87R11570000



PORCELAIN SCOOP

Two scoops with four different sizes, 0.02g, 0.05g, 0.1g and 0.4g.

vCode	Size
87R10530000	2pcs



For more information about our complete range of hand tools, please contact us.

Composite Hand Tools

COMPOSITE BY NENA

Code	Description	Pack
HPD209-1001	Build up brush (tip only) for natural looking composite restorations	2pcs
HPD209-1002	Tattoo instrument (tip only) for internal and external structural adjustments, allowing for the opportunity of internal colour stain effects	2pcs
HPD209-1003	Ball instrument (tip only) creates aesthetically pleasing and natural looking gingiva structures and is also ideal for adjusting occlusal surfaces	2pcs
HPD209-1000	Composite kit includes all three instrument tips and handles	3pcs



For more information about our complete range of hand tools, please contact us.

General Hand Tools

ACRYLIC SPATULA



Code: 04528A

FLEXIBLE SPATULA



Code: 66MSF

HOLLOW GOUGE CHISEL



Code	Description
07HGB	Chisel
07WHC	Handle

GRITMAN

Large modelling tool for wax, acrylic and ceramics.



Code: 66WCG

Plaster Hand Tools

PLASTER KNIFE

Code	Description	No.
04532FO-PH	With flask opener and plastic handle	1
04532FO	With flask opener	2
04532	Standard	3
04532LB	Long blade	4



PLASTER SPATULA

Code	Description	No.
04508-PH	Curved with plastic handle	1
04508	Curved	2
04508L	Long curved	3
66MSR	Rigid all metal	4
05PNS	Nylon	5



CENTRI™ PLASTER SNIPS

Code: 05PS



For more information about our complete range of hand tools, please contact us.

Wax Carvers

NO.5



Code: 04WC5

LECRON



Code: 04WLC

HYLIN LECRON



Code: 66ZFL002

For more information about our complete range of hand tools, please contact us.

ZAHLE WAX CARVER

Code	Description	No.
66ZFLg	Straight end	1
66ZLE	Curved end	2



PK THOMAS

Code	Description
66PKT1V	Green
66PKT2G	Gold
66PKT3B	Blue
66PKT4R	Red
66PKT5A	Silver



For more information about our complete range of wax carvers, please contact us.

Hand Tool Kits

INSTRUMENT SET DELUXE

Kit contains: rust proof tweezers, Sakura marking pen, Combi wax brush, small and large wax knives, ERGO Wax instruments No.1, No.3 and No.4, Multipurpose instrument (with blades), ERGO Acryl instrument kit (3 pieces), Takanishi brushes #4 and #6, soldering tweezers, slender Aderer clasp bending pliers, curved haemostats, plaster knife, standard calipers, grooved pointed pliers and foil scissors.



Code: 87R11540000

For a bespoke WHW student tool kit, please contact us.

Investment

NANOVEST

Achieve amazing results with lithium disilicate using NanoVest, a versatile nitrogen filled investment. The fluid consistency makes it exceptionally easy to invest, with smooth surfaces and no bubbles. With virtually no reaction layer, NanoVest has become the investment of choice for users of pressable ceramics.

Code	Description
58NVI	NanoVest Investment (100 x 100g + 2 x 946ml)
58NVIL	Liquid (946ml)



TRIVEST

Excellent universal investment that is particularly well suited for use with **3D printed resins**. TriVest has no reaction layer, creates extremely smooth surfaces and can be used for bonded, pressables and refractory dies.

Code	Description
HPD222-0000	TriVest (40 x 100g, 1 x Press liquid and 1 x
HPD222-0250	Cast liquid (250ml)
HPD222-0750	Press liquid (750ml)



Isolators & Separators

HARVEST MODELSEP™

Premium model separating agent that leaves no film or residue and dries instantly on contact. Works with all plasters, stones and resin reinforced stones.

Code	Size
HPD7065	236ml
HPD7066	946ml



HARVEST MS3™

Unique 3 in 1 separator that is non-oily, fast drying and is suitable for wax, porcelain and composites.

Code	Size
HPD7180	30ml
HPD7183	236ml



RENFERT PICOSEP

Thin silicone based isolating agent, specially developed for wax dipping techniques.

Code	Size
87R15520030	30ml



RENFERT WAX ISOLATION

Silicone based separating agent for optimal isolation of plaster from wax.

Code	Size
87R15520040	15ml



RENFERT ISO-STIFT

A practical, double sided isolating stick for isolating plaster against porcelain and wax.

Code	Size
87R17093000	4.5ml



Miscellaneous

ARROW GEL RED

Light cure resin that burns out without residue and is easy to carve and add to. Suitable for attachments, parts of chrome frameworks and inlays and onlays.

Code	Size
59AGR	3g

HARVEST CONTOURCHECK™

With a thin coating of only 3µ, this visual morphology aid is also easy to clean off.

Code	Size
HPD7700	7ml

PJC PLATINUM FOIL

Platinum veneer foil, 32 x 0.025mm.

Code	Size
20PF	5g

LISIFUSE

Transparent lithium silicate powder that fuses to any monolithic zirconia restoration and creates a micro thin lithium silicate coating with outstanding adhesion. Improves surface hardness for decreased antagonist abrasion and creates an outstanding high gloss finish.

Code	Size
HPD265-0075	75ml

TIME OUT

Liquid retardant for modifying the working time of plasters and stones.

Code	Size
66LTO	30ml



Miscellaneous

MODEL & CASTING RING TONGS

Holds 1X, 3X or 6X rings.

Code	Size
38127-410-00	360mm



DENTAURUM FOLIDENT

Mini thermoforming set for the easy thermoforming of crown copings. Heat the foils over a burner until they are transparent, press the soft foils into the die and then into the elastic clay in the mould pot. The foils are adapted and after cooling pulled off and cut down to shape.

Code: 38120-130-00

Code	Description	Pack
38120-131-00	Replacement foil 0.6mm	100pcs
38120-132-00	Replacement foil 0.1mm	200pcs



RENFERT BRUSH STAND

Practical brush stand for up to 8 brushes.

Code	Dimensions
87R229117	123 x 290 x 68mm



CROWN FORCEPS

Heat resistant up to 200°C.

Code: 38260-300-02



KERAMOG RIP

Diamond tipped crown holders.

Code: 87R11090300



Miscellaneous

NANO ROCK



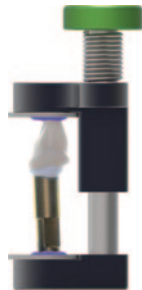
Liquid die stone that is incredibly strong and lightweight compared to traditional gypsums. Abrasion resistant and long-lasting, it is ideal for orthodontic study casts and demonstration models. Nano Rock does not shrink, has outstanding dimensional stability and is clean and precise to trim. Infinite colour variations can be achieved with minimal efforts when using the individual colours and the white base kit.

Code	Description	Size
90NRSKN	Natural Starter Kit	1kg(A)+1kg(B)
90NRSKW	White Starter Kit	1kg(A)+1kg(B)
90NRBL	Black Body (A)	1kg
90NRCB	Brown Body (A)	1kg
90NRGN	Green Body (A)	1kg
90NRNA	Natural Body (A)	1kg

Code	Description	Size
90NRRB	Blue Body (A)	1kg
90NRRD	Red Body (A)	1kg
90NRTN	Tan Body (A)	1kg
90NRWH	White Body (A)	1kg
90NRYW	Yellow Body (A)	1kg
90NRCAT	Catalyst (B)	1kg

CLIP

Unique device for the easy handling of hybrid abutments. The CLIP by Hans-Jürgen Joit offers consistent pressure while hardening, works with all types of implants, offers hands-free working without rotation.



Code
HPD309-0000

FIXGEL

Temporary holding gel for zirconia, ceramics and PFM that burns out cleanly but will hold veneers, copings and crowns securely on the die. 3.5ml



Code	Pack
HPD200-0000	2pcs

OPALESCENT

Japanese glass water bowl, guaranteed to be the most striking item on your bench.



Code
HPD7005

Mixing Palettes

THE TRAY

The new benchmark for ceramic mixing trays with a lightweight and smooth aluminium base. The Tray features a large black "pearl glass" work surface and is a collaboration of seven master technicians from around the world.



Code: HPD402-0010

RENFERT LAY:ART CRYSTAL

Contemporary glass mixing tray.



Code: 87R10430000

RENFERT LAY:ART CRYSTAL AQUA XL

Partially self-moistening mixing tray on abrasion free, float glass.



Code: 87R10431000

RENFERT MELODY

Simple porcelain stains tray.



Code: 87R10580100

PORCELAIN MIXING TRAY

Nine well porcelain mixing palette.



Code: 39MPg

PLASTIC MIXING TRAY

Twenty four well plastic mixing palette.



Code: 51PMT

Model Systems

AMANN GIRRBACH GIROFORM®

Precise and fast pin drilling machine that produces identical and uniform holes to guarantee pin friction. The plate holder is magnetically secured at the base and a laser guidance system ensures accuracy with the "one button" drill system. The Giroform® is a complete system with many additional components for added functionality.



Code	Size	Dimensions
AG176701	9.6kg	250 x 183 x 370mm

PUTTY



Code	Size
AG576461	1kg
AG576465	5kg

TUNGSTEN CARBIDE BUR



Code	Pack
AG176710	1pc

IMPRESSION CARRIER



Code	Pack
AG176733	1pc

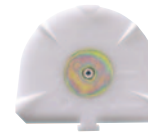
PINS



Code	Size
AG576450	1000pcs
AG576451	10,000pcs

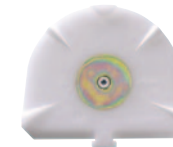
Model System Consumables

PREMIUM+ BASE PLATES



Code	Pack
AG576710	100pcs

PREMIUM+ XL BASE PLATES



Code	Pack
AG576745	100pcs

CLASSIC L BASE PLATES



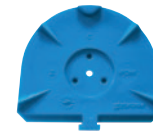
Code	Pack
AG576720	100pcs

CLASSIC XL BASE PLATES



Code	Pack
AG576740	100pcs

CLASSIC L BASE PLATES BLUE



Code	Pack
AG576726	100pcs

SECONDARY PLATES L (WITH MAGNET)



Code	Pack
AG576750	10pcs

SECONDARY PLATES XL (WITH MAGNET)



Code	Pack
AG576751	50pcs

ADAPTER FOR VERTEX



Code	Pack
AG576790	100pcs

ADJUSTMENT PLATE CLEAR L



Code	Pack
AG576765	2pcs

ADJUSTMENT PLATE CLEAR XL



Code	Pack
AG576766	2pcs

QUADRANT BASE PLATES



Code	Pack
AG576770	100pcs

ADJUSTMENT PLATE FOR QUADRANT BASE PLATES



Code	Pack
AG576771	2pcs

Model Systems

RENFERT AUTO SPIN

Using the AUTO spin pin drill, precise working models with plastic base plates can be fabricated. The drilling unit is also compatible with other model making systems like Giroform® or Zeiser®. The innovative Renfert Level Controller ensures that the horizontal drilling depths are the same, ensuring that the pin is absolutely vertical.



Code	Size	Dimensions
87R18600000	7.6kg	275 x 180 x 368mm

SILICONE PUTTY

1kg



Code
87R18600400

CONE PIN DRILL

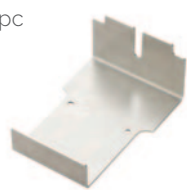
1pc



Code
87R18600500

UNIVERSAL IMPRESSION HOLDER

1pc



Code
87R18600700

CONE PIN

1000pcs



Code
87R3692000

Model System Consumables

BASE PLATE COMFORT

100pcs



Code
87R18600200

BASE PLATE STANDARD

100pcs



Code
87R18600100

SECONDARY PLATE

50pcs



Code
87R18600300

UNIVERSAL PLATE HOLDER

1pc



Code
87R18600600

EXCELMUM Z PLATES

Made from the highest quality plastics, these modelling plates represent outstanding value for money.



Code	Description	Pack
51ZPS	Small	100pcs
51ZPL	Large	100pcs

Model Tray System

CENTRI™ TRAY

Disposable tray system with multiple retention points, making model creation fast and accurate.

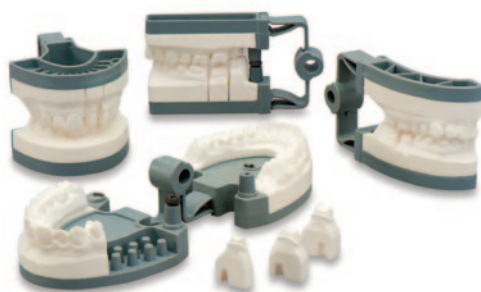


Code	Description	Pack
20TSF	Full arch	100pcs
20TSQ	Quadrant tray	100pcs

Model Tray System

MONOTRAC V2

When it comes to model, die and articulation "cost effective, efficient and accurate" are the essence of Monotrac. The integrated articulator, with pinless cone model base, allows a single pour "cast-in-place" setup that is simple and fast while eliminating labour intensive pinning and basing procedures. Monotrac dies are easily removed and re-seated with solid stable precision. Even lower anteriors, the thinnest of dies, resist lateral movement. Other key features of Monotrac include the Flex Arm Hinge, allowing natural movement to be mimicked. The plug-in adjustable vertical stops are easy to place and eliminate the need for a metal articulator set up. As Monotrac V2 does not require stone basing, cross arch and linear secondary base expansion issues are non-existent.



Sampler kit: 16 x straight quad bases, 4 x radius quad bases, 4 x anterior bases, 2 x full arch bases, 13 sets of hinges, 12 x vertical stops, 6 x stop screws and 1 x instruction packet

Starter kit: Starter kit: 18 x straight quad bases, 12 x radius quad bases, 16 x anterior bases, 5 x full arch bases, 28 sets of hinges, 12 x vertical stops, 6 x stop screws, 1 x full arch former, 1 x straight quadrant former, 1 set alignment jigs, 1 x hammer and complete step by step instructions for all 4 setups

Code: 53MTV2-SAM

Code: 53MTV2SK

Code	Description	Pack
53MTV2A	Anterior bases including hinges	100pcs
53MTV2FA	Full arch bases including hinges	100pcs
53MTV2QS	Straight quadrants including hinges	100pcs
53MTV2RQ	Radius quadrants including hinges	100pcs
53MTV2FABO	Full arch base only	100pcs
53MTV2H	Hinges	100pcs
53MTV2PUCF	Full arch former	2pcs
53MTV2PUCQ	Straight quadrant former	2pcs
53MTV2PUCR	Radius quadrant former	2pcs
53MTV2SH	Stop head with screw	100pcs
53MTV2ST	Vertical stop	50pcs

Occlusal Spray

DIASWISS OCCLUSION SPRAY

Code	Description	Size
40OSPB	Blue	75ml
40OSPG	Green	75ml
40OSPR	Red	75ml
40OSPW	White	75ml



Scanning Spray

DIASWISS DIASCAN SPRAY

Code	Description	Size
40DSSR	Red	75ml
40DSSW	White	75ml



RENFERT SCANSPRAY

Ensures amazing results from your scans with defined edges and undistorted surfaces.

Code	Size
87R17310000	200ml



Retention Pins

MEDIUM SOLID.

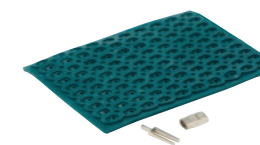
Code	Description	Pack	Size
51BDPM	Brass	1000pcs	22mm
33MPN	Nickel	1000pcs	22mm



WHW BI-V-PINS

Long pins with rubber sleeve.

Code	Pack	Size
01BVPL	1000pcs	20mm



Retention Pins

RENFERT BI-V-PIN

V-shaped model pins with sleeves, ideal when space is limited. Short friction path of 1mm for safe removal of diverging dies (plastic sleeve).

Code	Description	Pack	Size
87R3291000	With plastic sleeve	100pcs	12.5mm
87R3292000	With plastic sleeve	1000pcs	12.5mm
87R3281000	With metal sleeve	100pcs	12.5mm
87R3282000	With metal sleeve	1000pcs	12.5mm



RENFERT BI-PIN

Dual guidance model pin for precise rotation-free positioning of the die.

Code	Description	Pack	Size
87R3261000	Short with metal sleeve	100pcs	13.5mm
87R3262000	Short with metal sleeve	1000pcs	13.5mm
87R3362000	Short nickel plated with no sleeve	1000pcs	13.5mm
87R3461000	Long with metal sleeve	100pcs	17.5mm
87R3462000	Long with metal sleeve	1000pcs	17.5mm
87R3533000	Long nickel plated with no sleeve	1000pcs	17.5mm



RENFERT BI-PIN WITH SPIKE

Nickel plated model pin with spike to insert into the impression to reduce production time. Also available in 1000pcs.

Code	Description	Pack	Size
87R3231000	Short with metal	100pcs	21.5mm
87R3431000	Long with metal	100pcs	25.5mm
87R3521000	Long with no sleeve	100pcs	25.5mm



RENFERT PRO-FIX

Precision model pins with plastic sleeves, Easy-Glide-Function and a guidance pin. Stress free removal and short friction path of 1mm for safe removal of diverging dies.

Code	Pack
87R3671000	100pcs
87R3672000	1000pcs



Retention Pin Accessories

RENFERT RUBBER CAPS FOR BI-PINS

Prevents pins and sleeves from being damaged during model trimming..

Code	Pack
87R3220000	500pcs



RENFERT PIN DRILL BITS

Code	Description	Pack
87R3670159	1.59mm	3pcs
87R3470000	2mm (for handpieces)	3pcs



PIN DRILL

Code	Description	Pack
37PCD	1.95mm	3pcs



Plasters

ULTRASTONE

Blue, hard, class III plaster.



Code	Size
83KBKS	25kg

CRYSTACAL R



Code	Size
01CR	25kg

DENTAL PLASTER



Code	Size
01DP	25kg

FINE CASTING PLASTER



Code	Size
01FC	25kg

FLASKING PLASTER



Code	Size
01FP	25kg

DENTSTONE KD



Code	Size
01KP	25kg

Plungers

TRIVEST PLUNGERS

Unique in every way, the TriVest plungers are disposable with extremely smooth surfaces and rounded edges on both sides. The plungers cannot be tilted or misaligned and have enormous strength. Not produced from aluminium oxide, therefore the risk of cross contamination is reduced.

Code	Pack
HPD222-0050	50pcs



Polishing

CENTRI™ EMULSIONS

Animal fat and tissue free liquid polishing compound. Fast and efficient to use, can be used alone or as part of a polishing system. Suitable for use on acrylic, ceramic, precious, non-precious and titanium alloys.

Code	Description	Size
78CEM	Medium	100ml
78CEM-1000	Medium	1ltr
78CEF	Fine	100ml
78CEF-1000	Fine	1ltr



CENTRI™ SUPER G

Green compound that is outstanding value for money and gives a mirror shine on all non-precious and precious alloys. The bar has been designed for ease of use and has great pick up on the brush.

Code	Size
78CSGC	400g



KENDA® 244 BLUE

Universal polishing solution for a high shine on flexible dentures, acrylics, composite, gold and chrome cobalt.

Code	Size
36KQPP	75ml



Polishing

DIALUX® WHITE

1500 grit universal, initial polishing compound.

Code	Size
02DWP	100g



DIALUX® BLUE

1800 grit hard polishing compound for a high-lustre finish on all metals.

Code	Size
02DBP	100g



TIGER DIAMOND

Diamond polishing paste for a high shine on all metals, ceramics, composites and acrylics.

Code	Size
38190-302-00	50g



RENFERT POLISH ALL-IN-ONE

Smear free, universal diamond polishing paste for composites and ceramics.

Code	Size
87R5100000	10g



RENFERT POLISH ZrO₂

Extra coarse diamond polishing paste for use on zirconia.

Code	Size
87R5101000	10g



RENFERT POLISH LiSi₂

Coarse diamond polishing paste specifically for lithium disilicate.

Code	Size
87R5102000	10g



Retention Rings

RENFERT RETENTION RINGS

Zinc plated rings for the retention of the non-removable sections of the plaster model.

Code	Pack
87R3930000	1000pcs



Retention Beads

SCHULER S-U RETENTION BEADS SET

Easy to use retention bead set in various sizes. Each kit includes 25g of beads and a 15ml adhesive..

Code	Description
SC80504019	0.4mm
SC80506019	0.6mm
SC80508019	0.8mm



Ring Liner

SCHULER S-U DENTA VLIES

Asbestos free casting ring liner.

Code	Size	Dimensions
SC81400019	25m	50 x 1mm



SCHULER S-U BIO VLIES

Biodegradable casting ring liner that is made from wool with no ceramic fibres.

Code	Size	Dimensions
SC81399019	25m	50 x 1mm



KERA-VLIES®

Ring liner for easier deflasking after casting inside metal rings. Free expansion through fleece-like material, made from fireproof material that will not release any toxic fumes.

Code	Size	Dimensions
38127-250-00	25m	50 x 1mm
38127-251-00	15m	50 x 2mm



Cervical Wax

SCHULER S-U UNDERLAY WAX ORANGE

Soft casting wax for cervical margins with a solidus of 66°C.

Code	Size
SC6004001	45g



SCHULER S-U TRANSPA WAX

Medium hard, grey cervical wax with a solidus of 59°C.

Code	Size
SC6002901	45g



RENFERT GEO EXPERT CERVICAL

Organic, tension free cervical wax, with good adaptation and carving properties.

Code	Size
87R6340500	40g



DENTAURUM STARWAX C

Organic, soft cervical wax with great accuracy thanks to its minimal shrinkage.

Code	Size
38120-212-00	50g



Diagnostic Wax

SCHULER S-U DIAGNOSTIC WAXES

Highest quality diagnostic wax, with outstanding modelling and carving properties. With a solidus of 51°C, supplied per 45g.

Code	Description	No.
SC602044	Organic Transparent	1
SC602055	Organic White	2
SC602066	Organic Dentine A3	3
SC602022	Inorganic Intensive White	4
SC602033	Inorganic Dentine A2	5



SCHULER S-U SHADE SET

Comprehensive diagnostic wax kit that contains 14 unique colours to create the perfect aesthetic restoration, or the ideal teaching aid. The kit includes all items that are listed in the table below.

Code	Pack
SC652703	14pcs

Code	Description	Size
SC652715	Transparent	5g
SC652725	Bluish Transparent	5g
SC652735	Bluish Grey	5g
SC652745	Intensive Blue	5g
SC652755	Intensive White	5g
SC652765	Dentine Ivory	5g
SC652775	Dentine Beige	5g
SC652785	Intensive Orange	5g
SC652795	Intensive Light Brown	5g
SC652805	Intensive Dark Brown	5g
SC652815	Intensive Black	5g
SC652825	Pink	5g
SC652835	Silver Lancet	3g
SC652845	Gold Lancet	3g



All SCHULER S-U SHADE SET waxes are also available in 100g, please ask for more information.

Diagnostic Wax

RENFERT GEO EXPERT LINE

Wax set for creating monolithic, diagnostic and aesthetic single restorations and bridgework.

Code	Pack
87R6340001	8pcs

Renfert Geo Expert Line waxes are also available separately, please ask for more information.



RENFERT GEO CLASSIC NATURAL

Hard, ash free modelling wax, suited for the fabrication of diagnostic wax ups.

Code	Description	Size
87R4990300	Inorganic Dentine Opaque	75g
87R4990400	Organic Dentine Transparent	75g



RENFERT GEO CLASSIC SNOW WHITE

Medium hard modelling wax for functional wax ups.

Code	Description	Size
87R4990101	Inorganic White Opaque	75g
87R4990201	Organic White Transparent	75g



DENTAURUM STARWAX MODELLING WAX

High quality, ash free diagnostic waxes with outstanding carving properties. Highly resilient and made from purely organic materials.

Code	Description	Size
38120-204-00	Dentine A1	50g
38120-205-00	Dentine B3	50g
38120-206-00	Transparent	50g



Dipping Wax

SCHULER S-U DIPPING WAX

Exceptional quality dipping wax with a solidus of 74°C and a dipping temperature of between 85-90°C.

Code	Description	Size
SC60070	Yellow extra soft	300g
SC60075	Green soft	300g
SC60077	Brown soft elastic	300g



RENFERT GEO DIP

Soft, organic wax with high elasticity, tear resistance and low shrinkage.

Code	Description	Size
87R4823000	Yellow	200g
87R4823200	Orange	200g
87R4823300	Green	200g



Gingiva Wax

RENFERT GEO EXPERT GINGIVA SET

GEO Expert Gingiva waxes in pink and red are suitable for creating a gingival wax up in the anterior and posterior region, especially for implant superstructures.

Code	Pack
87R6340801	2pcs

Renfert Expert Gingiva waxes are also available separately, please ask for more information.



Inlay Wax

SCHULER S-U INLAY WAX GREY

Hard inlay and onlay wax with a solidus of 53°C.

Code	Size
SC6002801	45g



SCHULER S-U INLAY WAX GREEN

Organic, hard inlay wax with a solidus of 57°C.

Code	Size
SC6002001	45g

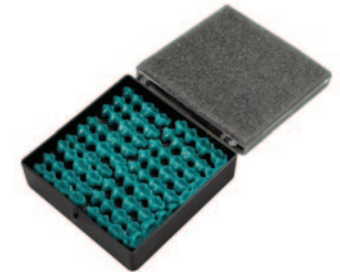


Preformed Wax

RENFERT GEO PONTICS

Highly stable wax pontics for modelling anterior and posterior bridges.

Code	Description	Pack
87R5000100	Posterior 14-17	20pcs
87R5000200	Anterior 12-22	20pcs
87R5000300	Posterior 24-27	20pcs
87R5000400	Posterior 34-37	20pcs
87R5000500	Anterior 32-42	20pcs
87R5000600	Posterior 44-47	20pcs
87R5000000	Set (includes 10 of each size)	60pcs



SCHULER S-U FORM UP

Wax mouldable parts that are available in either beige or grey.



SCHULER RP SKABETS

The original preformed wax patterns available in 6 systems.

SCHULER SKABETS VARIO

Prefabricated wax patterns, perfectly anatomically and physiologically correct but with reduced thickness.

For more information on SCHULER S-U FORM UP, RP SKABETS or SKABETS VARIO please contact us.

Press Ceramic Waxes



SCHULER S-U CERAMO GROUND WAX

Organic, elastic, apricot cervical wax with low contraction. Specially created for press ceramics, with a solidus of 61°C.

Code	Size
SC6003801	45g

SCHULER S-U CERAMO CARVING WAX

Organic, ice blue carving wax, specially created for press ceramics. With excellent carving properties and a solidus of 64°C.

Code	Size
SC6003701	45g

SCHULER S-U CERAMO CAPS WAX

Organic, orange dipping wax, specially created for press ceramics, with incredible dimensional stability and a solidus of 64°C.

Code	Size
SC60079016	200g

SCHULER S-U WAX WIRE

Light green wax wire, specially created for press ceramics and with a solidus of 62°C.

Code	Description	Size
SC62725069	2.5mm	250g
SC62730069	3mm	250g
SC62735069	3.5mm	250g

Scanning Wax

SCHULER S-U CAD/CAM WAXES

Reflection free, opaque scanning wax with a very low contraction and a solidus of 51°C.

Code	Description	Size
SC600911	Pastel Blue	45g
SC600922	Pastel Beige	45g
SC600933	Lilac	45g
SC600944	Grey	45g



Sculpturing Wax

SCHULER S-U MODELLING WAX BLUE

Hard wax for occlusal surfaces, with a solidus of 64°C.

Code	Size
SC6000001	45g



SCHULER S-U MODELLING WAX GREEN

Medium hard wax for the casting technique, with a solidus of 57°C.

Code	Size
SC6000011	45g



SCHULER S-U MODELLING WAX A GREY

Inorganic hard wax for occlusal surfaces, with a solidus of 64°C.

Code	Size
SC6000021	45g



SCHULER S-U MODELLING WAX O GREY

Organic hard wax for occlusal surfaces, with a solidus of 64°C.

Code	Size
SC6000031	45g

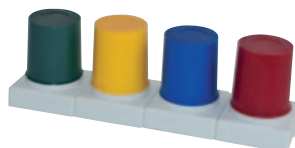


Sculpturing Wax

SCHULER S-U GNATHO WAX O

Organic, hard wax used for cross sectional build up with high strength and fluidity. With a solidus of 64°C.

Code	Description	Size
SC6005001	Blue	45g
SC6005101	Red	45g
SC6005201	Green	45g
SC6005301	Yellow	45g



SCHULER S-U GNATHO WAX A

Inorganic, hard wax used for cross sectional build up with high strength and fluidity. With a solidus of 64°C.

Code	Description	Size
SC6005501	Blue	45g
SC6005601	Red	45g
SC6005701	Green	45g
SC6005801	Yellow	45g



SCHULER S-U ESTHETIC WAXES

Organic, hard wax with low contraction and excellent carving properties. With a solidus of 51°C.

Code	Description	Size
SC600601	Organic Brown	45g
SC600611	Organic Beige	45g
SC600651	Inorganic Brown	45g
SC600661	Inorganic Beige	45g



SCHULER S-U CHAMALEO WAXES

Inorganic hard wax in a range of pastel colours to compliment your plaster, with a solidus of 51°C.

Code	Description	Size
SC600811	Yellow	45g
SC600821	Green	45g
SC600831	Brown	45g
SC600841	Pink	45g
SC600851	Grey	45g

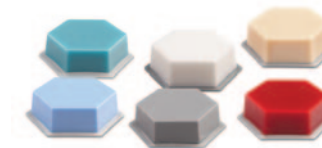


Sculpturing Wax

RENFERT GEO CLASSIC BASIC SET

Introductory set to Renfert waxes that contains: GEO Classic mint-transparent, GEO Classic Natural dentine opaque, GEO Classic Avantgarde grey-opaque, GEO Classic Snow-white opaque, GEO Classic Milling wax blue-opaque and GEO Classic Cervical and undercut wax red-transparent.

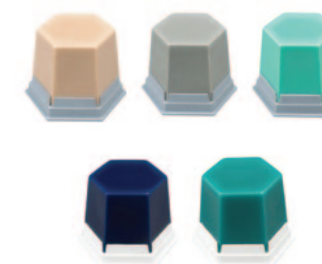
Code	Size
87R4930004	6 x 20g



RENFERT GEO CLASSIC

Hard wax that is ideally suited for occlusal design due to its non-elastic properties.

Code	Description	Size
87R4970100	Inorganic Beige Opaque	75g
87R4970200	Inorganic Grey Opaque	75g
87R4970300	Inorganic Mint Opaque	75g
87R4971200	Organic Blue Transparent	75g
87R4971300	Organic Mint Transparent	75g



RENFERT GEO CLASSIC AVANTGARDE

Inorganic, medium hard, opaque wax that has excellent modelling and carving properties.

Code	Description	Size
87R4950100	Beige Opaque	75g
87R4950200	Grey Opaque	75g
87R4950300	Mint Opaque	75g



RENFERT GEO EXPERT FUNCTIONAL

GEO Expert Functional are high quality modelling waxes for functional wax ups.

Code	Pack
87R6340901	6pcs

Renfert GEO Expert Functional waxes are also available separately, please ask for more information.



Sculpturing Wax

DENTAURUM STARWAX MODELLING WAX

High quality, ash free sculpturing waxes with outstanding carving properties. Highly resilient and made from purely organic materials.

Code	Description	Size
38120-201-00	Green	50g
38120-207-00	Red	50g
38120-208-00	Blue	50g
38120-202-00	Beige	50g
38120-203-00	Grey	50g



Wax Sticks

SCHULER S-U WAX STICKS

Beige coloured wax burnout sticks, which can be cut to the desired length.

Code	Description	Pack
SC63080029	Teardrop profile	15pcs
SC63080129	Heart profile	15pcs



SCHULER S-U WAX STICKS BLUE

Hard and highly stable wax sticks that are pliable but avoid unintentional deformation.

Code	Description	Size	Dimensions
SC63030029	3mm	250g	110mm
SC63035029	3.5mm	250g	110mm
SC63040029	4mm	250g	110mm
SC63045029	4.5mm	250g	110mm
SC63050029	5mm	250g	110mm
SC63055029	5.5mm	250g	110mm

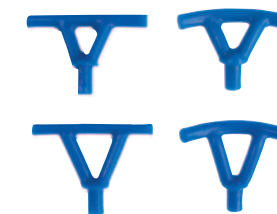


Sprue Wax

SCHULER S-U SPRUE BARS

Preformed sprues that allow for the perfect position of the wax patterns. Rounded bars with no sharp edges and the substantial size also reduces the possibility of voids.

Code	Description	Pack	Dimensions
SC65200019	Straight 4mm	100pcs	15mm
SC65202019	Straight 5mm	100pcs	15mm
SC65205019	Bent 4mm	100pcs	15mm
SC65207019	Bent 5mm	100pcs	15mm
SC65201019	Straight long 4mm	100pcs	20mm
SC65203019	Straight long 5mm	100pcs	20mm
SC65206019	Bent long 4mm	100pcs	20mm
SC65208019	Bent long 5mm	100pcs	20mm



RENFERT GEO TRIANGLE WAX SPRUES

Extra hard with no distortion, creating optimal metal flow.

Code	Pack
87R6803000	100pcs



RENFERT GEO PEAR WAX SPRUES

Shaped for the optimal flow of metal and controlled cooling.

Code	Pack
87R5011100	200pcs



Sticky Wax

SCHULER S-U STICKY WAX C+B

Efficient wax that ensures stable connection when cool, with a solidus of 77°C.

Code	Size
SC6004501	45g



Wax Wire

SCHULER S-U COLOURLESS WAX WIRE

Extremely smooth wax wire with no risk of colour absorption. Particularly suitable for the delimitation of functional margins on impressions.

Code	Description	Size
SC62930059	3mm	250g
SC62950159	5mm	250g



SCHULER S-U WAX WIRE

Schuler's wax wire is tension free and malleable, which prevents accidental movement of any object that needs to be cast. Available in a range of colours and thicknesses, including an extra hard turquoise version that is not brittle even in colder conditions.



Code	Description	Size
SC62720019	Blue Medium Hard 2mm	250g
SC62725019	Blue Medium Hard 2.5mm	250g
SC62730019	Blue Medium Hard 3mm	250g
SC62735019	Blue Medium Hard 3.5mm	250g
SC62740019	Blue Medium Hard 4mm	250g
SC62745019	Blue Medium Hard 4.5mm	250g
SC62750019	Blue Medium Hard 5mm	250g
SC62760019	Blue Medium Hard 6mm	250g
SC62720029	Blue Hard 2mm	250g
SC62725029	Blue Hard 2.5mm	250g
SC62730029	Blue Hard 3mm	250g
SC62735029	Blue Hard 3.5mm	250g
SC62740029	Blue Hard 4mm	250g
SC62745029	Blue Hard 4.5mm	250g
SC62750029	Blue Hard 5mm	250g
SC62760029	Blue Hard 6mm	250g
SC62720039	Green Medium Hard 2mm	250g
SC62725039	Green Medium Hard 2.5mm	250g
SC62730039	Green Medium Hard 3mm	250g
SC62735039	Green Medium Hard 3.5mm	250g

Wax Wire

Code	Description	Size
SC62740039	Green Medium Hard 4mm	250g
SC62745039	Green Medium Hard 4.5mm	250g
SC62750039	Green Medium Hard 5mm	250g
SC62760039	Green Medium Hard 6mm	250g
SC62720049	Green Hard 2mm	250g
SC62725049	Green Hard 2.5mm	250g
SC62730049	Green Hard 3mm	250g
SC62735049	Green Hard 3.5mm	250g
SC62740049	Green Hard 4mm	250g
SC62745049	Green Hard 4.5mm	250g
SC62750049	Green Hard 5mm	250g
SC62760049	Green Hard 6mm	250g
SC62720059	Turquoise Extra Hard 2mm	250g
SC62725059	Turquoise Extra Hard 2.5mm	250g
SC62730059	Turquoise Extra Hard 3mm	250g
SC62735059	Turquoise Extra Hard 3.5mm	250g
SC62740059	Turquoise Extra Hard 4mm	250g
SC62745059	Turquoise Extra Hard 4.5mm	250g
SC62750059	Turquoise Extra Hard 5mm	250g
SC62760059	Turquoise Extra Hard 6mm	250g